

sensIQ S

EVO white

EAN 4007841 034955

Article number 034955

infrared sensor 3 x
100°3 zones scalable
2-20m

2000 W

2000 W max. (LED-
ready)

IP54

2 - 2000 lux
daylight operation

5 sec - 15 min



ideal 2 - 5 m

Teach

Teach mode



energy saving

5 years

manufacturer's
warranty steinel-
professional.de/
garantie

Function description

The evolution of perfection. The sensIQ S is just as perfect as its larger role model. For indoors and outdoors, ideal for building entrances, loading bays, for mounting heights of up to 5 m, quadruple sensor system for optimum surveillance over 3x100° coverage angle, 20 m reach (tangential), reach setting to the accuracy of a metre in 3 independent directions. Remote control and corner wall mount bracket included.

Technical specifications

Dimensions (L x W x H)	128 x 114 x 74 mm	LED lamps > 8 W	600 W
With motion detector	Yes	Capacitive load in µF	176 µF
Manufacturer's Warranty	5 years	Power supply, detail	500 VA max., 120 V
Settings via	Remote control, Potentiometers, Smart Remote	Sensor Technology	Passive infrared
With remote control	Yes	Mounting height	2,00 – 5,00 m
Version	white	Mounting height max.	5,00 m
PU1, EAN	4007841034955	Optimum mounting height	2 m
Type	Other	Detection angle	300 °
Application, place	Indoors, Outdoors	Angle of aperture	180 °
Application, room	multi-storey / underground car park, outdoors, warehouse, front door, all round the building, courtyard & driveway, Indoors	Sneak-by guard	Yes
Colour	white	Capability of masking out individual segments	Yes
Colour, RAL	9010	Electronic scalability	No
Includes corner wall mount	Yes	Mechanical scalability	Yes
Installation site	wall, corner	Reach, radial	r = 4 m (42 m ²)
		Reach, tangential	r = 20 m (1047 m ²)
		Switching zones	1360 switching zones

sensIQ S

EVO white

EAN 4007841 034955

Article number 034955



Technical specifications

Installation	Surface wiring, Wall, corner	Functions	Normal / test mode, Manual ON / ON-OFF
IP-rating	IP54	Twilight setting	2 – 1000 lx
Ambient temperature	-20 – 50 °C	Time setting	5 s – 15 Min.
Material	Plastic	Basic light level function	No
Mains power supply	100 – 240 V / 50 – 60 Hz	Main light adjustable	No
Switching output 1, resistive	2000 W	Twilight setting TEACH	Yes
Fluorescent lamps, electronic ballast	1500 W	Constant-lighting control	No
Fluorescent lamps, uncorrected	1000 VA	Interconnection	Yes
Fluorescent lamps, series-corrected	700 VA	Type of interconnection	Master/master
Fluorescent lamps, parallel-corrected	1000 VA	Interconnection via	Cable
Switching output 1, low-voltage halogen lamps	1000 VA		
LED lamps < 2 W	100 W		
LED lamps > 2 W < 8 W	300 W		

Accessories

EAN 4007841 007638	Remote control RC9
EAN 4007841 608804	Corner wall mount sensIQ S
EAN 4007841 608835	Corner wall mount sensIQ S
EAN 4007841 009151	Remote control Smart Remote
EAN 4007841 608828	Corner wall mount sensIQ S

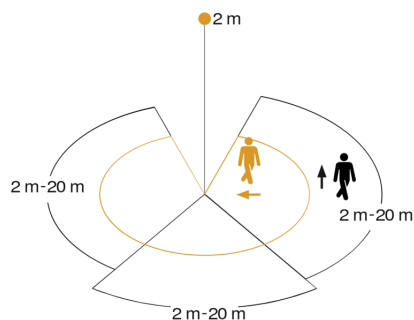
sensIQ S

EVO white

EAN 4007841 034955

Article number 034955

Detection Zone



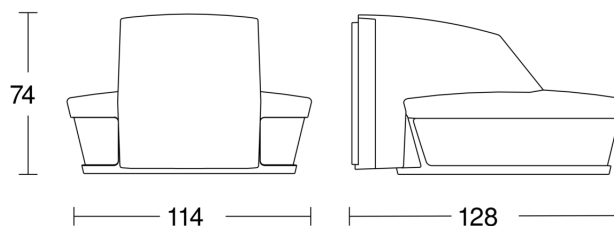
Mögliche Montagehöhe: 2,00 m – 5,00 m

Orange: radial

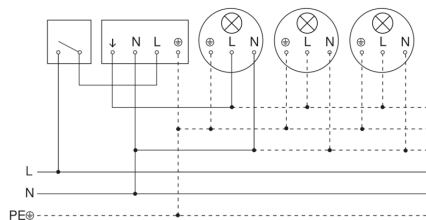
Schwarz: tangential

3 skallerbare Zonen

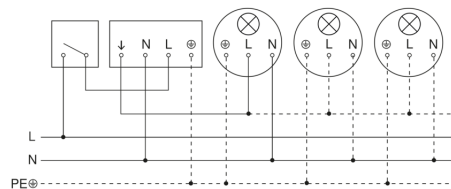
Dimension Drawing



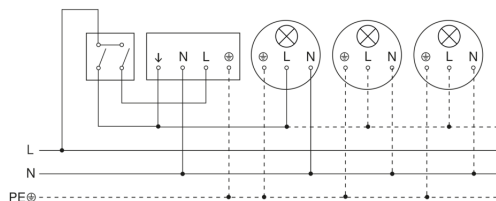
Light without neutral conductor



Light with neutral conductor



Connection using two-circuit switch for manual and automatic operation



Connection of 4-fold push-button coupler to DALI2 APC

