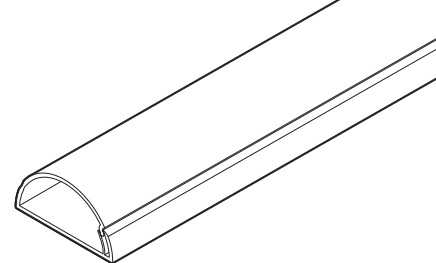


Mini Trunking 30mm x 15mm



D-Line 30 x 15mm Mini Trunking offers a subtle appearance to make surface cable installations look attractive!

The ½ round shape can blend to resemble the natural top-section of skirting boards, while offering a modern solution for vertical cable drops and runs across ceilings.

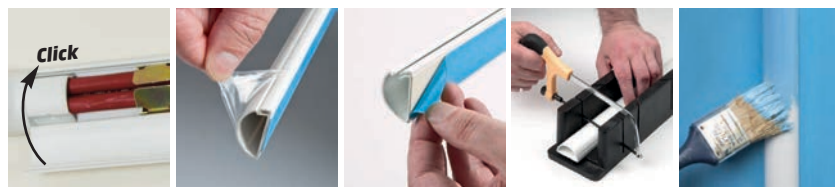
Available in a variety of colours that can blend with surrounds or create a striking visual feature, this versatile profile is popular for 2x 2.5mm T&E, 2x 1.5mm 2c FP cables, 2x broadband cable and 4x Cat-5 combinations.

- Unique stylish 'D-Line' appearance
- Patented hinge & click-lock lid
- Self-adhesive
- Paintable
- Clip-Over & Smooth-Fit accessories for perfect finish
- 'Easy to install, looks great!'
- Adaptors enable popular connections [see page 16/17](#)
- Fully safety tested and certified to BS EN 50085-1:2005

Code	Description	Colour
R2D3015W	(L) 2m x (W) 30mm x (H) 15mm	White
R3D3015W	(L) 3m x (W) 30mm x (H) 15mm	White
R2D3015M	(L) 2m x (W) 30mm x (H) 15mm	Magnolia
R3D3015M	(L) 3m x (W) 30mm x (H) 15mm	Magnolia
R2D3015A	(L) 2m x (W) 30mm x (H) 15mm	Aluminium Effect
R3D3015A	(L) 3m x (W) 30mm x (H) 15mm	Aluminium Effect

Code	Description	Colour
R2D3015B	(L) 2m x (W) 30mm x (H) 15mm	Black
R3D3015B	(L) 3m x (W) 30mm x (H) 15mm	Black
R2D3015O	(L) 2m x (W) 30mm x (H) 15mm	Oak Effect
R3D3015O	(L) 3m x (W) 30mm x (H) 15mm	Oak Effect
R3D3015R	(L) 3m x (W) 30mm x (H) 15mm	Red

Mini Trunking 30mm x 15mm



Product Specification

Production method	<ul style="list-style-type: none">• Single piece design, produced in one single process by extrusion
PVC base & lid	<ul style="list-style-type: none">• Light weight, easy to handle & cut - lid cannot detach• Self-extinguishing• Can be drilled
Elastomer hinge	<ul style="list-style-type: none">• Effectively bonds base & lid• Impact absorbing• Can be opened & closed thousands of times
Available colours	<ul style="list-style-type: none">• White • Magnolia • Black • Aluminium Effect • Wood Effect • Red
UV stabilised	<ul style="list-style-type: none">• Will not discolour or turn brittle in sunlight
Operating temperature	<ul style="list-style-type: none">• Stable between -30°C upto +60°C
½ round design	<ul style="list-style-type: none">• No sharp edges• Enables subtle aesthetics• Blends above skirting
External dimensions	<ul style="list-style-type: none">• 30mm x 15mm (w x h)
Tape	<ul style="list-style-type: none">• Foam backed 1mm thick• Effective on clean dry surfaces• Caution, can spoil surfaces on removal
Paintable	<ul style="list-style-type: none">• Scuff using gentle abrasive such as sandpaper, so paint keys for best results
Weight	<ul style="list-style-type: none">• 0.115 kg per metre
Packaging	<ul style="list-style-type: none">• Each length supplied with removable film cover
Capacity	<ul style="list-style-type: none">• If containing 240v cables leave 45% of internal capacity for air circulation
Quality approvals	<ul style="list-style-type: none">• BS EN 50085 - 1:2005 Part 1 SGS Registration ELS 185841/2/C/AB/16