




# Ground lights.

01604 495 151  
collingwoodlighting.com

 @collingwoodLED  
 /collingwoodlighting  
 collingwoodled

## GUARANTEE / WARRANTY

7 year extended warranty

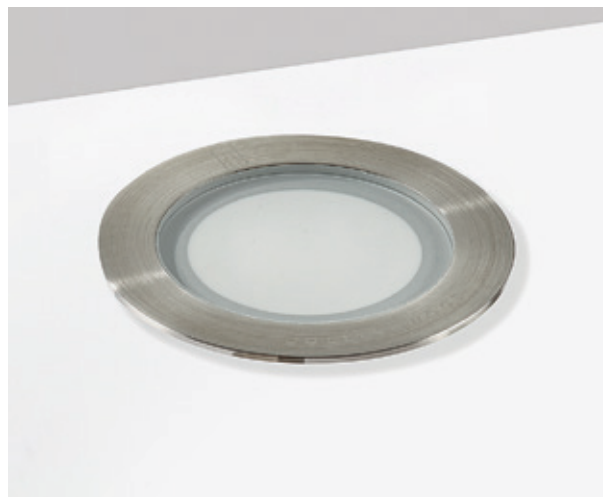
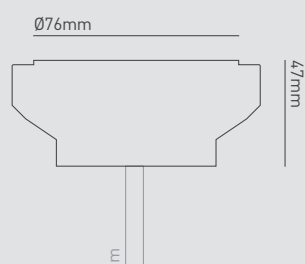
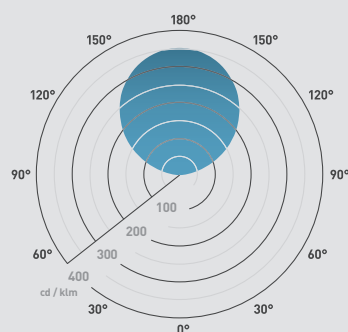
## FEATURES & BENEFITS

Frosted effect for softer tone of light

Robust cable for outdoor use

Brushed steel finish for sleek effect

Beam angle: 100°



## GL050

3W LED ground / marker light

## FEATURES

Wattage	3W
IP rating	IP68
IK rating	IK08
Colour flexibility	Fixed colour
Walk over / drive over	Walk over (5mm toughened glass)
Input	350mA
LED lifetime	70,000h L70 B10
SDCM	3SDCM

## INSTALLATION INFORMATION

Cut out size	Ø 65mm
Bathroom zone	0
Inrush current	N/A
Construction material	Stainless steel (316)
Weight	552g
Maximum ambient temperature	35°C
SELV	N/A
Electric class (1, 2, 3)	3

## PHOTOMETRICS @ 25°C

Product code	Colour	Beam angle	CRI	lm	lm/W	lx at 1m
GL050 NW	4000K	100°	>80Ra	50	17	20
GL050 WW	3000K	100°	>80Ra	46	15	16
GL050 27	2700K	100°	>80Ra	46	15	16
GL050 BLUE	Blue	100°	-	7	2	2

## WIRING INFORMATION

Cable / flying lead	1m (H05RN-F) rubberised cable (outside diameter: 6mm)
Type of wiring required	Series

## LED DRIVERS

Product code	Input	SELV	Dimming	Bathroom zone	Min	Max
PLU/350 1-9	220-240V	Yes	No	1	1	3
PLR/350 1-5	N/A	Yes	No	0	1	1
PLD UNI-DRIVE 350MA	N/A	Yes	Yes (1-10V)	1	1	3

## ACCESSORIES

JB2 / JB4 / JB6	IP68 waterproof connectors	Sold separately	<a href="#">422-423</a>
TUBE/68	Installation tube	Sold separately	<a href="#">236</a>
WCR 275 BLACK	2-core rubber cable	Sold separately	<a href="#">423</a>
PDC/GRID DIMMER	Grid dimmer kit for multiple fitting types	Sold separately	<a href="#">422</a>