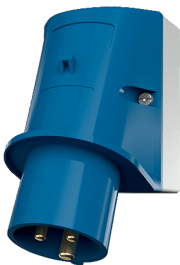


Wall mounted inlet  
Part no. 344



- screw terminals
- cable entry also possible on the back side
- enclosure base with stamped recess for quick cutting out

Technical specifications

Ampere	32 A
Poles	3 p
Voltage	230 V
Clock position	6 h
Hertz	50-60 Hz
Connection technology	Screw terminals
Contact	standard
Protection type	IP 44
Weight	350 g
Declaration of Conformity	DE,VDE, AT,ÖVE, CN,CQC

Drawing

