

## Important Information

**We recommend that luminaires are installed by a qualified electrician ensuring the installation complies with current IEE wiring regulations BS7671:2018 & local building control.**

- All tests should be carried out in accordance to EN 50172:2004.
- BELL will not accept responsibility for any claims arising from a poor installation.
- You are advised to test 5 samples before mass application of sensor in a new lighting project. The distance between any inductive sensors should be greater than 3m.
- Microwave maximum operating height 3.2m.
- External use only.
- Operating Temperature -30°C to +35°C, emergency versions 0°C to +35°C

This product may contain substances that can be hazardous to the environment if not disposed of properly. Electrical and electronic equipment should never be disposed of with general household waste but must be separated for its correct treatment and recovery.

Where possible recycle your packaging.



**Read these instructions before installation and retain for future reference**

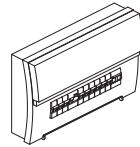
**This equipment should be installed by a competent electrician**



This product may contain substances that can be hazardous to the environment if not disposed of properly. Electrical and electronic equipment should never be disposed of with general household waste but must be separated for its correct treatment and recovery. Where possible recycle your packaging.

FINISH: Black / Opal

## APPROVALS & CLASSIFICATIONS



**ALWAYS SWITCH OFF THE MAINS SUPPLY BEFORE INSTALLATION OR SERVICING**

### STEP 1

Isolate the mains power supply before connecting. Unpack the luminaire and check that you have all the tools to install the luminaire safely and in compliance with current electrical standards. Ensure there are no obstructions or services in the way.

### STEP 2

Remove front trim.

### STEP 3

Unscrew fixings and remove the diffuser.

### STEP 4

Unscrew fixings and remove SMD LED board.

### STEP 5

a) Drill hole for cable entry and fit grommet into base of fitting. b) Feed mains cable through grommet in base of fitting.

### STEP 6

(a) Drill fixing holes through the base tray of the fitting and into fixing surface. (b) Install wall plugs into holes. (c) Secure bulkhead to the wall using fixings. Do not install this fitting on damp or newly plastered surfaces.

### STEP 7

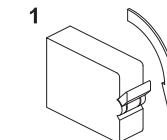
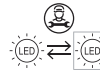
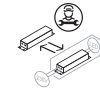
Terminate the cables into the terminal block mounted on the underside of the SMD LED board ensuring the correct polarity is observed. Ensure all conductors are fully sleeved and insulated against the effects of heat.

### STEP 8

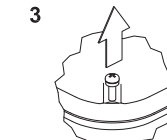
a) Re-fit the SMD LED board. b) Re-fit diffuser and secure.

### STEP 9

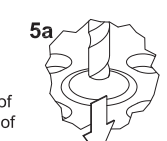
Restore electricity and check illumination.



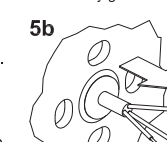
Isolate mains power



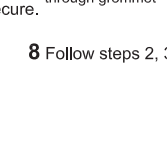
Loosen diffuser fixing screws  
Typ. 4 pos'ns



Drill hole in base  
cable entry grommet



Fit grommet

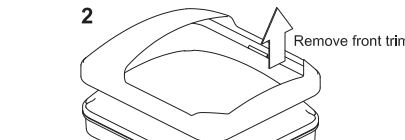


Feed mains cable  
through grommet

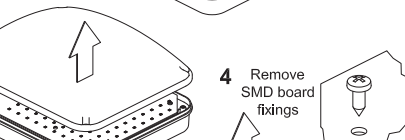
Remove diffuser

Remove SMD board

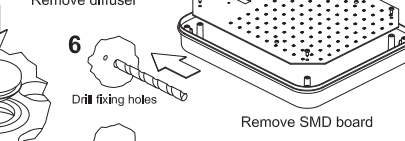
Remove SMD board



Remove front trim



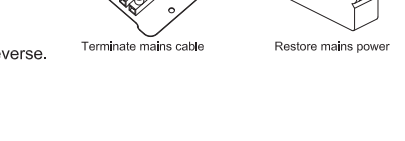
Remove SMD board fixings



Remove SMD board



Remove SMD board



Remove SMD board

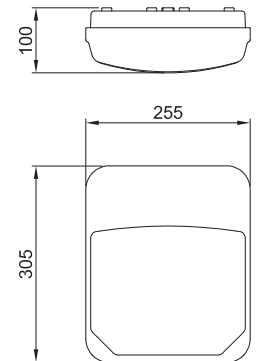
Remove SMD board

Remove SMD board

Remove SMD board



## DIMENSIONS



**Technical Helpline +44 (0)1924 893380**

**www.belllighting.co.uk**

**British Electric Lamps Ltd**  
Unit A Foxbridge Way, Normanton Industrial Estate  
Normanton, West Yorkshire. WF6 1TN

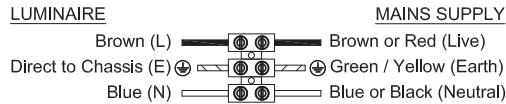
T: +44 (0)1924 893380 F: +44 (0)1924 894320 E: sales@belllighting.co.uk

**www.belllighting.co.uk**

Read these instructions before installation and retain for future reference  
This equipment should be installed by a competent electrician

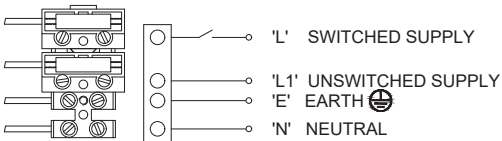


## CLASS I WIRING DETAILS



THIS IS A CLASS I PRODUCT AND MUST BE EARTHED

## EMERGENCY WIRING DETAILS



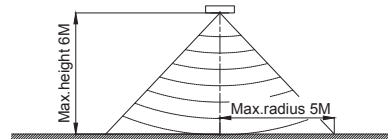
## CONNECTIONS - CABLE COLOUR CODING

Brown cable to connection marked 'L' / 'L1'  
Yellow & Green cable to connecting marked 'E'  
Blue cable to connection marked 'N'

THIS IS A CLASS I PRODUCT AND MUST BE EARTHED

## MICROWAVE SENSOR SETTINGS (MODEL: UC01)

DETECTION RANGE:



### SENSITIVITY:

Sensitivity can be adjusted by selecting the combination on the DIP switches for different applications.

I- 100%	ON	1	2
II- 75%	ON	ON	100%
III- 50%	ON	—	75%
IV- 10%	ON	—	50%

### HOLD TIME:

Refers to the time period that the light remains 100% on if no more movement is detected.

I- 5s	ON	3	4
II- 10s	ON	ON	5s
III- 5min	ON	—	90s
IV- 15min	ON	—	5min

### DAYLIGHT SENSOR:

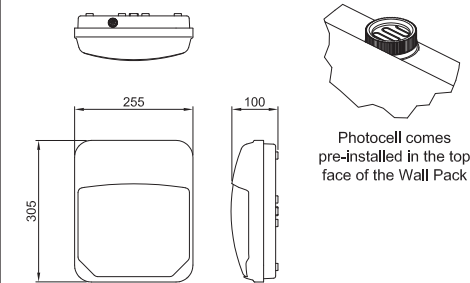
Different daylight threshold can be preset on DIP switches. Light will always turn on upon movement if daylight sensor is disabled.

I- Disable	ON	5	6
II- 50Lux	ON	ON	Disable
III- 10Lux	ON	—	50Lux
IV- 2Lux	ON	—	10Lux

## PRODUCT SPECIFICATION

- Electrical Classification: Class I
- Voltage: 240V 50Hz
- Ingress Protection: IP65
- Rated Wattage: 22W
- Colour Temp.: 4000K
- Lumens: 1500lm
- Lumens/Watt: 68.2lm/W
- Photocell Type: Button Control
- On/Off Levels: 10~20Lux On  
30~60Lux Off
- Switching Time Delay: 0~120S

## DIMENSIONS / PHOTOCELL POSITION



## Testing & Commissioning for Emergency Luminaire

- Ensure the Load is connected.
- Connect the battery.
- Switch on the Unswitched Supply
  - Check the Charge LED illuminates.
- Switch on the Maintained Supply
  - Check the LED illuminates as normal.
- Switch off the Maintained Supply.
- Switch off the Unswitched Supply
  - Check the Charge LED extinguishes and the load LED illuminates at a reduced output.
- Enter the commissioning date on the Battery Pack.  
Switch on the Unswitched Supply

Luminaire Ref/Location	In Case of difficulty, contact the Installation Engineers:- Tel: _____									
Full Recharge Time 24 Hours	Duration 3 Hours				Lamp Type - LED					
ROUTINE TEST RECORD										
	Year 1		Year 2		Year 3		Year 4		Year 5	
Monthly Test	Signed	Date	Signed	Date	Signed	Date	Signed	Date	Signed	Date
Functional										
Functional										
Functional										
Functional										
Functional										
Functional										
Functional										
Functional										
Functional										
Functional										
Functional										
Functional										
Three Hour										