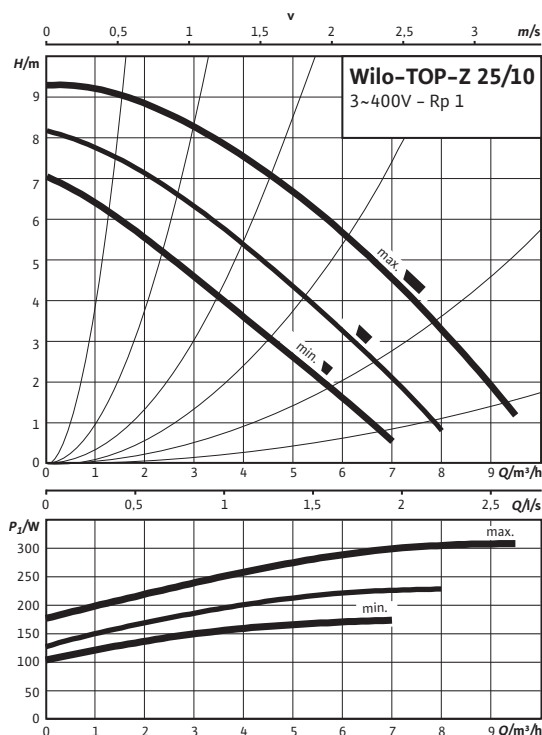
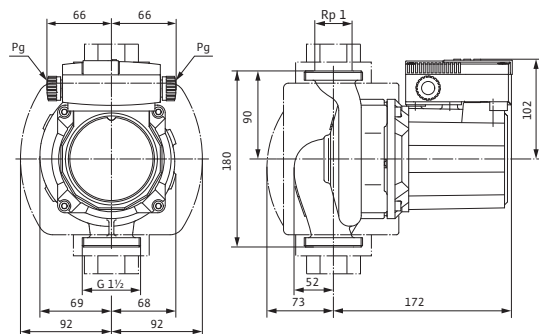


## Data sheet: Wilo-TOP-Z 25/10 (3~400 V, PN 10, RG)

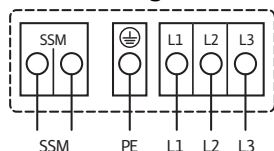
### Pump curves Three-phase current



### Dimension drawing



### Terminal diagram



Mains connection 3~400 V, 50 Hz

3~230 V, 50 Hz (with optional switching plug 3~230 V)

Full motor protection with integrated trip electronics in terminal box for all speed stages

Triggering: All-pole deactivation of motor by integrated trip electronics

Reset: Manual reset at terminal box necessary

Load capacity of the potential-free NC contact according to VDI 3814 for the collective fault signal (SSM) 1 A, 250 V ~

For function, see Wilo catalogue, chapter "Pump management Wilo-Control, consulting guide"

### Approved fluids (other fluids on request)

Drinking water and water for food-processing companies in accordance with TrinkwV 2001 (drinking water ordinance)

### Permitted field of application

Temperature range for applications in domestic hot water circulation systems at maximum ambient temperature of +40 °C

0...+80, for short periods (2 h) to +80 °C

Temperature range for applications in domestic hot water circulation systems at ambient temperature of +40 °C in short-term operation 2 h

110 °C

Max. permitted total hardness in domestic hot water circulation systems

3.57 mmol/l (20 °dH)

Maximum permissible operating pressure

$P_{max}$  10 bar

Special version for operating pressure,  $P_{max}$

16 bar

### Pipe connections

Threaded pipe union

Rp 1

Thread

G 1½

Overall length

$l_o$  180 mm

### Motor/electronics

Emitted interference

EN 61000-6-3

Interference resistance

EN 61000-6-2

Protection class

IP X4D

Insulation class

H

Mains connection

3~400/230 V, 50 Hz

Nominal motor power

$P_z$  180 W

Speed

$n$  2000 / 2400 / 2700 rpm

Power consumption

$P_i$  175 / 230 / 310 W

Current at 1~230V

$I$  - A

Current at 3~230V

$I$  0.55 / 0.74 / 1.33 A

Current at 3~400V

$I$  0.32 / 0.43 / 0.77 A

Motor protection

integrated

Threaded cable connection

PG 2x13.5

### Materials

Pump housing

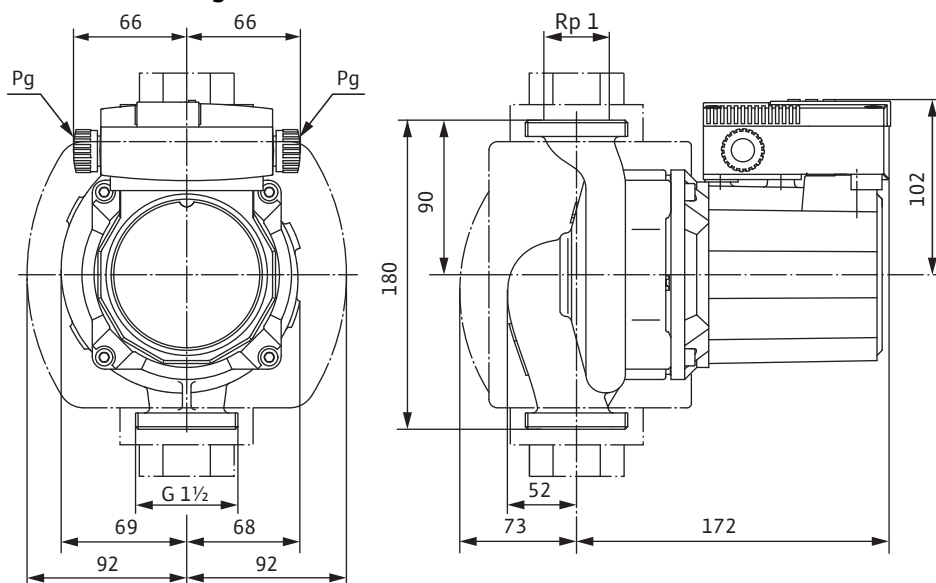
Red brass (CC 499K) according to DIN 50930-6 in accordance with Drinking Water Ordinance

## Data sheet: Wilo-TOP-Z 25/10 (3~400 V, PN 10, RG)

Impeller	Plastic (PPE – 30% GF)	
Pump shaft	Stainless steel (X39CrMo17-1)	
Bearing	Carbon, synthetic resin impregnated	
Minimum suction head at suction port for avoiding cavitation at water pumping temperature		
Minimum suction head at 40 / 80 / 110 °C	5 / 8 / 20 m	
Information for order placements		
Make	Wilo	
Type	TOP-Z 25/10	
Art no.	2061965	
Weight approx.	m	7 kg

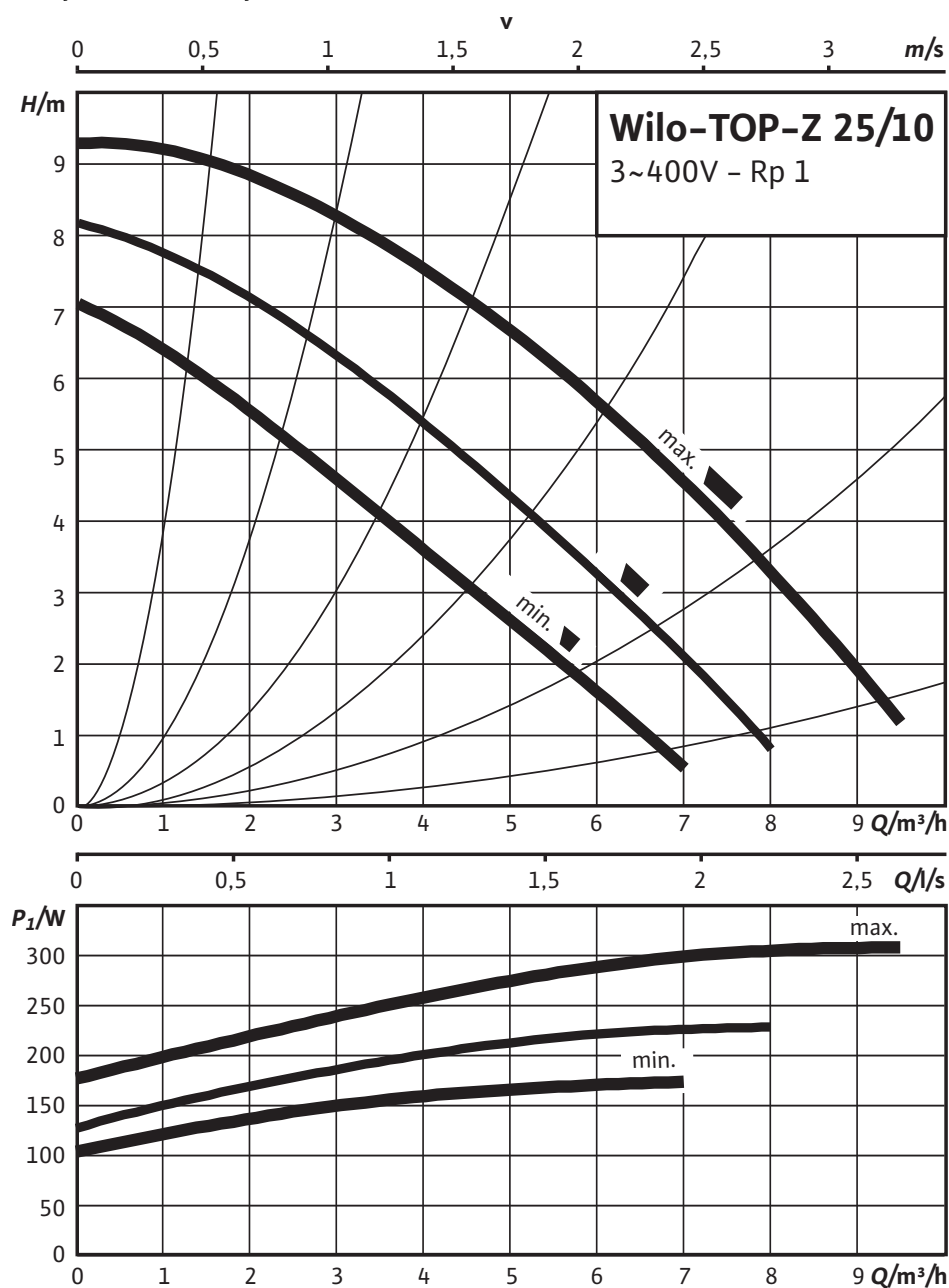
Dimensions and dimension drawings: Wilo-TOP-Z 25/10 (3~400 V, PN 10, RG)

Dimension drawing



Pump curves: Wilo-TOP-Z 25/10 (3~400 V, PN 10, RG)

Pump curves Three-phase current



## Ordering information: Wilo-TOP-Z 25/10 (3~400 V, PN 10, RG)

Information for order placements		
Make		Wilo
Type		TOP-Z 25/10
Art no.		2061965
EAN number		4016322891970
Colour		green/bronze
Minimum order quantity		1
Minimum order quantity unit		PCE
Weight (net)	kg	6.7
Length (net)	mm	180
Width (net)	mm	184
Height (net)	mm	245
Weight (gross)	kg	7.8
Length (gross)	mm	270
Width (gross)	mm	178
Height (gross)	mm	215
Packaging type		Cardboard box
Packaging property		Transport packaging
Pieces per pallet		96
Number per layer		16

## Specification texts: Wilo-TOP-Z 25/10 (3~400 V, PN 10, RG)

This circulation pump is suitable only for drinking water.

Can be used for domestic hot water circulation systems in the industry and building services.

Maintenance-free glandless circulation pump with threaded or flange connection, pre-selectable speed stages for power adjustment.

### Equipment and function

- Manual power adjustment with 3 speed stages
- Pumps with 1~ motor:
- Pumps with 3~ motor:
- Fault signal light
- Contact for collective fault signal
- Direction of rotation indicator light
- Mains connection 3~, 230 V with optional switching plug
- Pump housing in bronze or grey cast iron (stainless steel depending on type)
- PN 6/PN 10 combination flange (for DN 40 to DN 65)
- Thermal insulation shells
- Additional functions by retrofittable Protect Module C:
- Dual pump management (two single pumps installed in parallel) Main/standby operation (automatic fault-actuated switchover/time-sensitive pump alteration)

### Materials

Pump housing: Red brass (CC 499K) according to DIN 50930-6 in accordance with Drinking Water Ordinance

Impeller: Plastic (PPE – 30% GF)

Pump shaft: Stainless steel (X39CrMo17-1)

Bearing: Carbon, synthetic resin impregnated

### Approved fluids (other fluids on request)

Max. volume flow:  $9.5 \text{ m}^3/\text{h}$

Max. delivery head: 9.5 m

### Pipe connections

Threaded pipe union: Rp 1

Thread: G 1½

Overall length: 180 mm

### Motor/electronics

Emitted interference: EN 61000-6-3

Interference resistance: EN 61000-6-2

Protection class: IP X4D

Insulation class: H

Mains connection: 3~400/230 V, 50 Hz

Max. speed: 2700 / rpm2400 / rpm2000 rpm

Speed: 2000 / 2400 / 2700 rpm

Nominal motor power: 180.0 W

Power consumption 3~400 V: 175 / 230 / 310 W

Current at 1~230V: – A

Current at 3~400V: 0.77 / A0.43 / A0.32 A

## Specification texts: Wilo-TOP-Z 25/10 (3~400 V, PN 10, RG)

Motor protection: integrated

Threaded cable connection: 2x13.5

### Information for order placements

Art no.: 2061965

EAN number: 4016322891970

Weight approx.: 7.8 kg

Make: Wilo

Designation: Wilo-TOP-Z 25/10 (3~400 V, PN 10, RG)