



# steel wire cable tray system accessories



Marco Cable Management has further enhanced its reputation, by the continued growth in innovative products and supportive accessories.

Marco has also invested heavily in new state of the art equipment to enhance its position as the largest UK manufacturer of Steel Wire Cable Tray solutions. Additionally, we have also invested in a 25,000 sq ft dedicated distribution site for the Steel Wire Cable Tray range.

The Steel Wire Cable Tray accessories have been further expanded to include a new range of fast fix designs. These enable a reduced installation time on-site. These additions allow Marco to offer a full range of accessories for every Steel Wire Cable Tray installation requirement.

The Marco Fast Fix Universal Strut Clip allows the tray to be fastened to strut both quickly and easily, whilst maintaining a sturdy support. Supplied in packs of 50, the Strut Clip is made secure with one turn of a screwdriver and can be utilised in both new build and re-fit schemes, where strut channel is specified. Made from sprung steel, the Strut Clip has a chromium-free Geomet® finish.

**STANDARDS** - Marco Steel Wire Cable Tray conforms to the following standards: BSEN 61537:2007, IEC 61537



## Marco's New Fast Fix Side Coupler (MCSSC)

Marco's Steel Wire Cable Tray accessories include the new Fast Fix Side Coupler, enabling two lengths of Steel Wire Cable Tray to be coupled together and secured within seconds. Therefore reducing installation time on-site whilst meeting and exceeding earth continuity requirements to standard EN 61537.

The innovative design allows the Marco Fast Fix Side Coupler to be installed from inside the Steel Wire Cable Tray, allowing for ease of installation within confined areas.

Supplied in packs of 50, the new Fast Fix Side Coupler is made secure with one turn of a screwdriver and can be utilised with both 55mm and 106mm depth side walls.

Made from sprung steel, it has a chromium-free Geomet® finish, and is suitable for both internal and external environments, as well as Data Centre applications.

## key features

- Quick and easy to install, saving time on installation
- With one turn of a screw driver, Marco's new Fast Fix Side Coupler is locked into place
- Innovative design allows for installation from inside the Steel Wire Cable Tray, making the coupler ideal for use within confined spaces
- Chromium-free Geomet® finish. Suitable for both internal and external environments, as well as Data Centre applications
- Meets and exceeds EN 61537 standard for electrical continuity
- Designed to fit Marco 55mm depth side walls (up to and including 300mm wide trays) and 106mm depth side walls (100mm to 200mm wide trays only). For all other sizes the MCQC is required.



Highly Commended  
Innovative Commercial Product of the Year





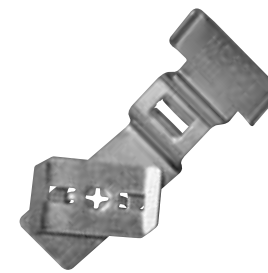
# steel wire cable tray system accessories



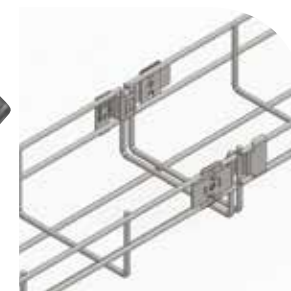
MCL



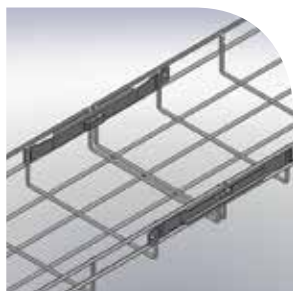
MCD



MCSSC



MCQC



MCFUSC



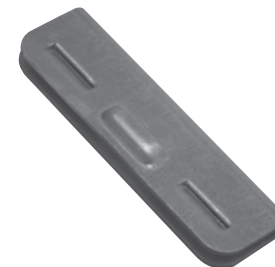
MCQLL



MCQLS



MCDOP



MCDJB



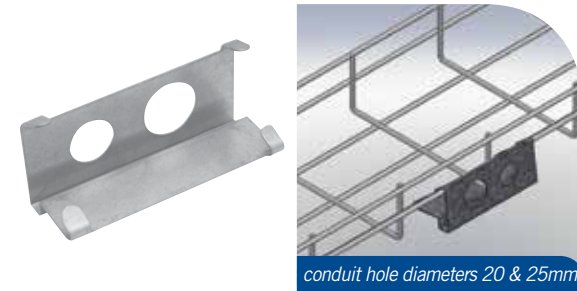
# steel wire cable tray system accessories



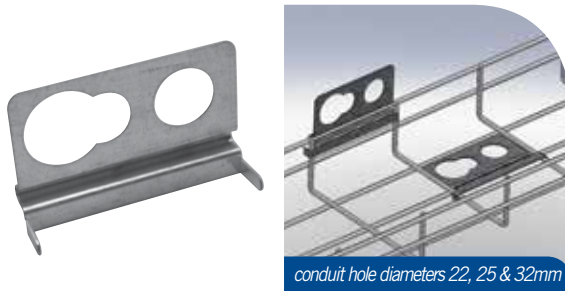
**MCCL**



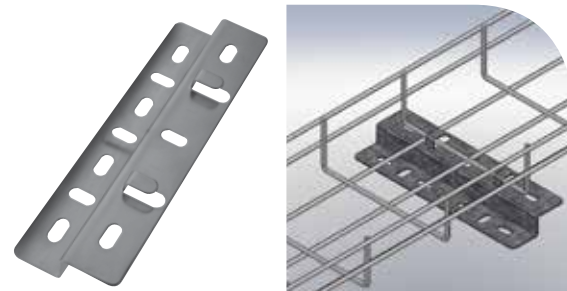
**MCSH**



**MCFCP**



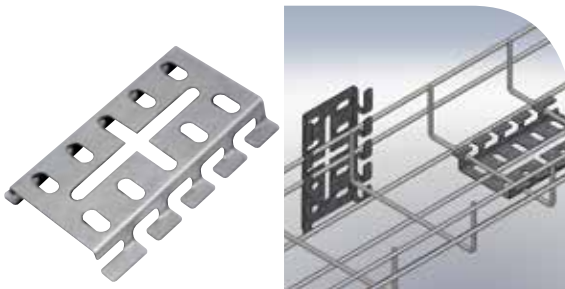
**MCFCP3**



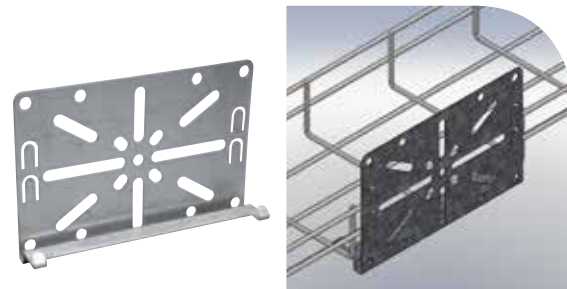
**MCQFR**



**MCAMP**



**MCMFP**



**MCUSB**



**MCCA**

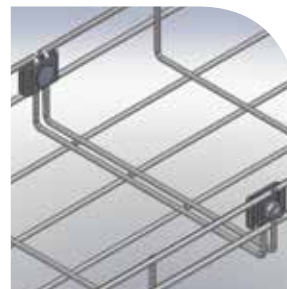
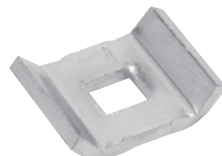
**FINISHES: Pre-Galvanised-PG, Geomet®-GT and Electro-Zinc-EZ**



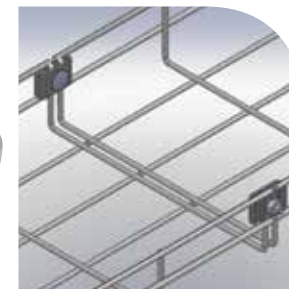
# steel wire cable tray system accessories



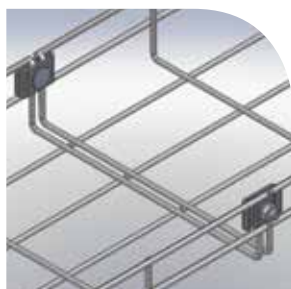
**MCCB**



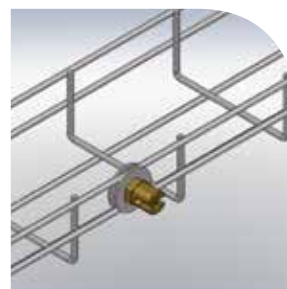
**MCCS**



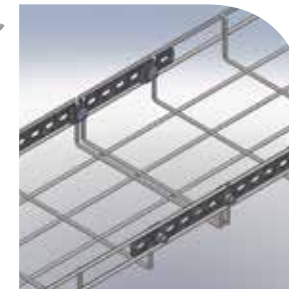
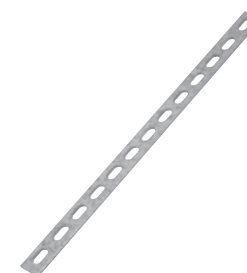
**MCCM**



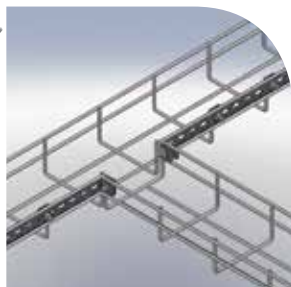
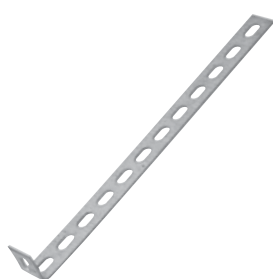
**MCM620NW**



**MCET16**



**MCSP**



**MCSP90**



max safe working load (kg): 100 will take M6/M8 threaded rod

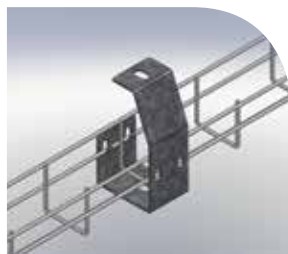
**MCSB68**



max safe working load (kg): 100 will take M6/M8 threaded rod

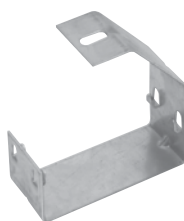
**MCSB1012**

# steel wire cable tray system accessories



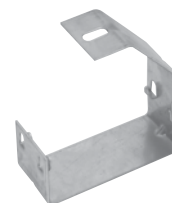
max safe working load (kg): 30

**MCSB50**



max safe working load (kg): 30

**MCSB100**



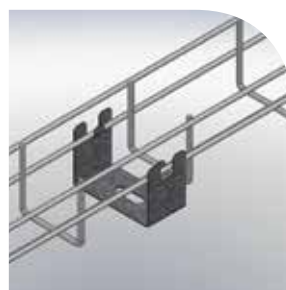
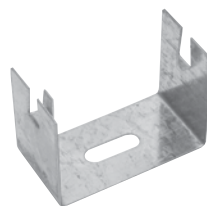
max safe working load (kg): 30

**MCSB150**

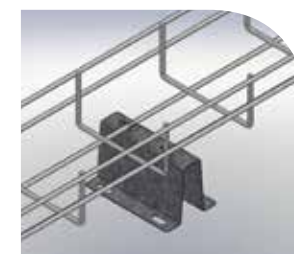
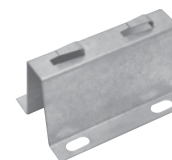


max safe working load (kg): 20

**MCB35**



**MCTS35**

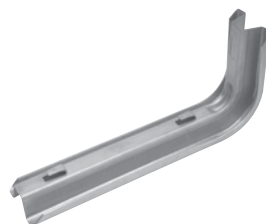


max safe working load (kg): 150

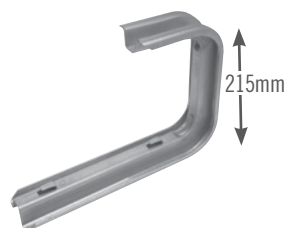
**MCFFB**



**MCCSB RANGE**



**MCWFB RANGE**



**MCCFB RANGE**



**MCCB RANGE**



**MCWB RANGE**



# steel wire cable tray system accessories

CODE	DESCRIPTION	TRAY WIDTH (mm)	FINISH	QTY
<b>MCL100</b>	Steel Wire Cable Tray lid - 2m long	100	PG	1
<b>MCL150</b>	Steel Wire Cable Tray lid - 2m long	150	PG	1
<b>MCL200</b>	Steel Wire Cable Tray lid - 2m long	200	PG	1
<b>MCL300</b>	Steel Wire Cable Tray lid - 2m long	300	PG	1
<b>MCL400</b>	Steel Wire Cable Tray lid - 2m long	400	PG	1
<b>MCL450</b>	Steel Wire Cable Tray lid - 2m long	450	PG	1
<b>MCL500</b>	Steel Wire Cable Tray lid - 2m long	500	PG	1
<b>MCL600</b>	Steel Wire Cable Tray lid - 2m long	600	PG	1
CODE	DESCRIPTION	SIZE (mm x m)	FINISH	QTY
<b>MCD30</b>	Steel Wire Cable Tray divider	30 x 3	PG	1
<b>MCD55</b>	Steel Wire Cable Tray divider	55 x 3	PG	1
<b>MCD106</b>	Steel Wire Cable Tray divider	106 x 3	PG	1
CODE	DESCRIPTION	SIZE (mm x m)	FINISH	QTY
<b>MCSSC</b>	Fast fix side coupler (to fit MC5550 - MC55300)	NA	GT	50
<b>MCQC</b>	Quick coupler (each bag supplied with tool. Also available separately upon request)	NA	EZ GT	50
<b>MCFUSC</b>	Fast fix universal strut clip	NA	GT	50
<b>MCQLS</b>	Quick lock small (for trays from 100mm to 200mm)	NA	EZ	25
<b>MCQLL</b>	Quick lock large (for trays from 300mm to 600mm)	NA	EZ	25
<b>MCDOP</b>	Drop out plate	NA	PG	1
<b>MCDJB</b>	Divider joining bracket	NA	EZ	50

CODE	DESCRIPTION	FINISH	QTY
<b>MCCL</b>	Clamp large - hole diameter 6.5mm	EZ GT	50
<b>MCSH</b>	Suspension hanger - hole diameter 10.2mm	EZ GT	25
<b>MCFCP</b>	Flexible conduit plate (not suitable for 75mm deep range)	EZ GT	1
<b>MCFCP3</b>	Flexible conduit plate 32mm	PG	1
<b>MCQFR</b>	Quick fix riser	EZ	1
<b>MCAMP</b>	Wall bracket/ACC mounting plate	PG	1
<b>MCMFP</b>	Multi fix plate	PG	1
<b>MCUSB</b>	Universal support bracket	PG	1
<b>MCCA</b>	Nut, bolt and clamp assembly	EZ GT	50
<b>MCCB</b>	Nut, bolt and clamp assembly	EZ GT	50
<b>MCCS</b>	Clamp small	EZ GT	100
<b>MCCM</b>	Clamp medium	EZ GT	100
<b>MCM620NW</b>	M6 x 20 screw, nut and washer	EZ GT	100
<b>MCET16</b>	Earth terminal	COPPER	10
<b>MCSP</b>	Splice plate	PG GT	10
<b>MCSP90</b>	Splice plate with 90 degree bend	PG GT	10
<b>MCSB68</b>	Suspension bracket for 6 and 8mm threaded rod	EZ / PG	2
<b>MCSB1012</b>	Suspension bracket for 10 and 12mm threaded rod	EZ / PG	2
<b>MCSB50</b>	Suspension bracket for MC3050 and MC5550	PG	1
<b>MCSB100</b>	Suspension bracket for MC30100 and MC55100	PG	1
<b>MCSB150</b>	Suspension bracket for MC30150 and MC55150	PG	1
<b>MCB35</b>	Bracket for MC3050 and MC5550	PG	1
<b>MCTS35</b>	Tray support bracket for MC3050 and MC5550	PG	1
<b>MCFFB</b>	Fast fix floor bracket	PG	10
<b>MCTAG</b>	Available in various colours	uPVC	50
<b>MCROP</b>	Wire cutters	NA	1



**MCTAG**



**MCROP**

# steel wire cable tray system accessories



CODE	DESCRIPTION	LUGS	FINISH	QTY
<b>MCCSB100</b>	Fast fix channel support bracket for 100mm wide tray, 200mm long	2	PG	1
<b>MCCSB150</b>	Fast fix channel support bracket for 150mm wide tray, 250mm long	2	PG	1
<b>MCCSB200</b>	Fast fix channel support bracket for 200mm wide tray, 300mm long	2	PG	1
<b>MCCSB300</b>	Fast fix channel support bracket for 300mm wide tray, 400mm long	4	PG	1
<b>MCCSB400</b>	Fast fix channel support bracket for 400mm wide tray, 500mm long	6	PG	1
<b>MCCSB450</b>	Fast fix channel support bracket for 450mm wide tray, 550mm long	8	PG	1
<b>MCCSB500</b>	Fast fix channel support bracket for 500mm wide tray, 600mm long	8	PG	1
<b>MCCSB600</b>	Fast fix channel support bracket for 600mm wide tray, 700mm long	10	PG	1
<b>MCCSB1000</b>	Fast fix channel support bracket for 1000mm wide tray, 1100mm long	10	PG	1

CODE	DESCRIPTION	TRAY WIDTH	*LOAD (Kg)	FINISH	QTY
<b>MCWFB100</b>	Fast fix wall bracket	100	175	PG	1
<b>MCWFB150</b>	Fast fix wall bracket	150	200	PG	1
<b>MCWFB200</b>	Fast fix wall bracket	200	140	PG	1
<b>MCWFB300</b>	Fast fix wall bracket	300	100	PG	1
<b>MCWFB400</b>	Fast fix wall bracket	400	95	PG	1
<b>MCWFB450</b>	Fast fix wall bracket	450	70	PG	1
<b>MCCFB100</b>	Fast fix ceiling bracket	100	135	PG	1
<b>MCCFB150</b>	Fast fix ceiling bracket	150	125	PG	1
<b>MCCFB200</b>	Fast fix ceiling bracket	200	90	PG	1
<b>MCCFB300</b>	Fast fix ceiling bracket	300	75	PG	1
<b>MCCFB400</b>	Fast fix ceiling bracket	400	50	PG	1
<b>MCCFB450</b>	Fast fix ceiling bracket	450	44	PG	1
<b>MCCB100</b>	Cantilever bracket	100	200	PG	1
<b>MCCB150</b>	Cantilever bracket	150	180	PG	1
<b>MCCB200</b>	Cantilever bracket	200	200	PG	1
<b>MCCB300</b>	Cantilever bracket	300	300	PG	1
<b>MCCB400</b>	Cantilever bracket	400	400	PG	1
CODE	DESCRIPTION	TRAY WIDTH	ADDITIONAL COMPONENTS	FINISH	QTY
<b>MCWB50</b>	Wall/floor bracket	50	MCTS35 / MCCB or MCB35 / MCM620NW	PG	1
<b>MCWB100</b>	Wall/floor bracket	100	MCCL / MCM620NW	PG	1
<b>MCWB150</b>	Wall/floor bracket	150	MCCL / MCM620NW	PG	1
<b>MCWB200</b>	Wall/floor bracket	200	MCCL / MCM620NW	PG	1
<b>MCWB300</b>	Wall/floor bracket	300	MCCL / MCM620NW	PG	1
<b>MCWB400</b>	Wall/floor bracket	400	MCCL x 2 / MCM620NW x 2	PG	1
<b>MCWB450</b>	Wall/floor bracket	450	MCCL x 2 / MCM620NW x 2	PG	1
<b>MCWB500</b>	Wall/floor bracket	500	MCCL x 2 / MCM620NW x 2	PG	1
<b>MCWB600</b>	Wall/floor bracket	600	MCCL x 2 / MCM620NW x 2	PG	1