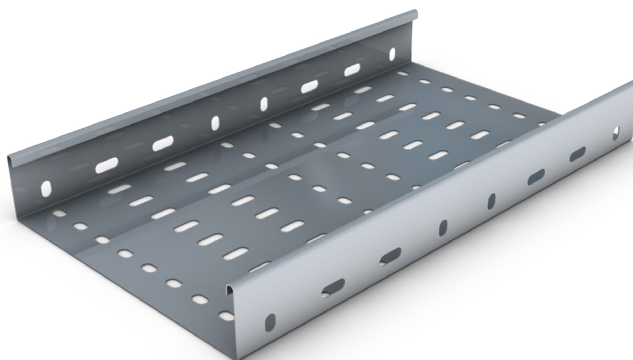


## Heavy Duty Cable Tray (in accordance with BS 61537:2007)

Ref.	Tray Width mm
HR50T	50
HR75T	75
HR100T	100
HR150T	150
HR225T	225
HR300T	300
HR450T	450
HR600T	600
HR750T	750
HR900T	900

Available across this size range

750 - 900 ONLY

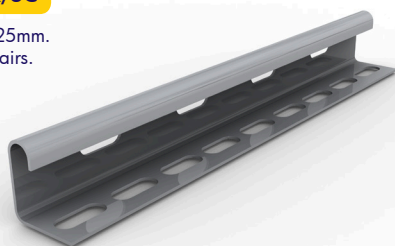


If you require 50 - 600 in please refer to the **UNIKLIP** Cable Tray section on page 60

### Straight Coupler

Ref.HR/SC

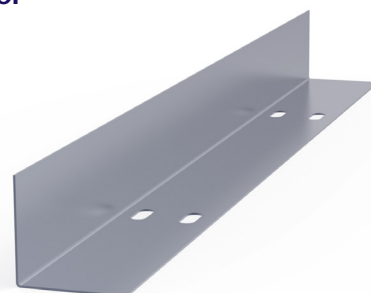
Length 225mm.  
Sold in pairs.



### Tray Divider

Ref.HR/DF

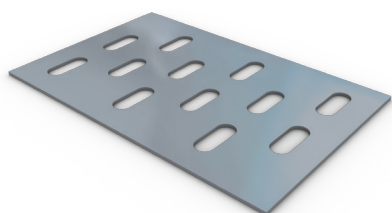
Length 3000mm.



### Fish Plate

Ref.FP 100-900mm

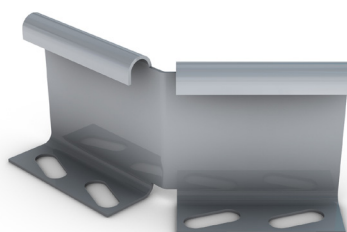
Tray width less 58mm.



### Cranked Coupler

Ref.HR/CC

Sold in pairs.



### Tray to Channel Klip

Ref. CHTR 50

