



# Junction Boxes & Accessories

A first class range of essential wiring accessories  
required for any installation

Junction Boxes



Metal Boxes



Dry Lining Boxes



Accessories



Cat No.	Description	Inner Carton	Outer Carton
<b>Junction Boxes - Selective Entry</b>			
603	3 way 30 amp 89mm diameter (3½") brown	10	100
603W	3 way 30 amp 89mm diameter (3½") white	10	100
604	4 way 20 amp 80mm diameter (3¼") brown	10	100
604W	4 way 20 amp 80mm diameter (3¼") white	10	100
606	6 way 20 amp 89mm diameter (3½") brown	10	100
606W	6 way 20 amp 89mm diameter (3½") white	10	100

- Manufactured to BS EN 60670
- Selective entries indicated by numbers and symbols on rotating cover
- Moulded in brown or white urea
- Rear entry knockouts in base to facilitate ease of wiring

- Suitable for unbroken ring wire installations
- Lower lip of entries can easily be knocked out to take twin cables
- Robust, generous capacity slot terminals with large grub screws



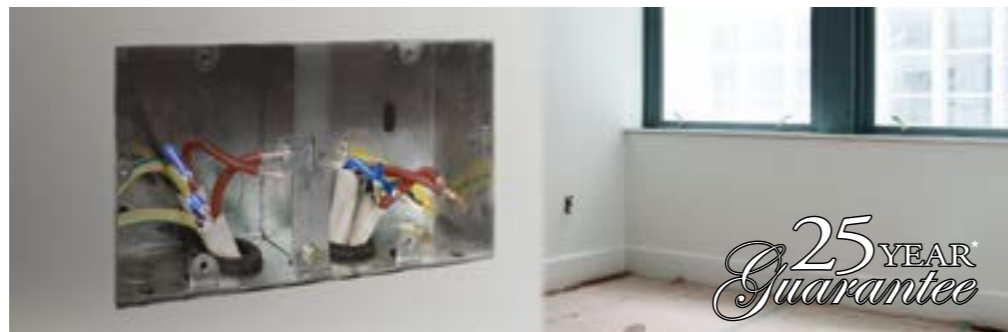
<b>Junction Boxes - Knockout Entry</b>			
491	4 way 20 amp 57mm diameter (2¼") brown	20	200
491W	4 way 20 amp 57mm diameter (2¼") white	20	200

- Manufactured to BS EN 60670
- Suitable for unbroken ring wire installations
- Robust, generous capacity slot terminals with large grub screws

- Small and unobtrusive
- Moulded in brown or white urea



Junction Boxes	2
Connection Covers	3
Fuses	4
Steel Knockout Boxes	4
Dry Lining Boxes	5
Flex Connectors	6
Connector Strips	7
Earth Clamps	7



# Junction Boxes

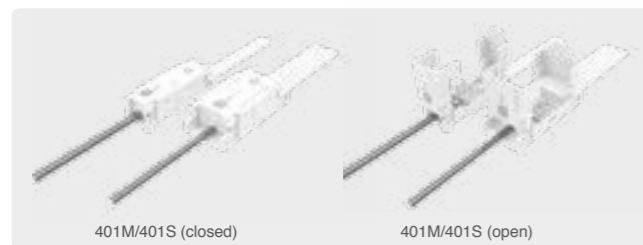
Cat No.	Description	Inner Carton	Outer Carton
<b>Junction Boxes - Selective Entry</b>			
4100SP	3-way 100 amp single pole	10	100
4100DP	3-way 100 amp double pole	5	50
460	3-way 60 amp	5	50

- Manufactured to BS EN 60670
- Robust, generous capacity slot terminals with large grub screws
- Moulded in brown urea

- High amperage connector blocks
- Brass terminal block
- Approved to VDE 0606



Cat No.	Description	Inner Carton	Outer Carton
<b>Junction Boxes - Selective Entry</b>			
401M	Master, suitable for 4-way terminal block *	20	200
401S	Slave, suitable for 3-way terminal block *	28	280



- For use with terminal strips up to 30 amp
- 3 part, easy assemble connection cover
- Auto cable restraint - 75% quicker to install than similar products
- V2 fire rating
- Supplied in a counter display carton
- White colour for ease of location in areas of low light
- Made in the UK from reclaimed materials
- Conforms to all relevant local and national regulations
- \* terminal strips not included

## Easy to Install



# Junction Boxes & Wiring Accessories

Cat No.	Description	Inner Carton	Outer Carton
<b>Junction Boxes - Lighting</b>			
403	3-way 3 amp	20	200
405	3-way 5 amp	20	200
410	3-way 10 amp	20	200



- Manufactured to BS 5733
- Approved BS EN 60998 terminal block
- Mounting holes for horizontal and vertical fixing
- Ideal for use in lighting applications
- Small and unobtrusive
- Approved to VDE 0606

## Fuses - Bulk Pack

Fuse Type	Description	Inner Carton	Outer Carton
F103	3 amp in packs of 10	10pks	100pks
F105	5 amp in packs of 10	10pks	100pks
F1010	10 amp in packs of 10	10pks	100pks
F1013	13 amp in packs of 10	10pks	100pks

- Manufactured to BS 1362



## Steel Knockout Boxes

Box Type	Description	Inner Carton	Outer Carton
HGS01	1 gang 16mm (20 pcs per pack)	20	200
HGS02	1 gang 25mm (10 pcs per pack)	10	100
HGS03	1 gang 35mm (10 pcs per pack)	10	100
HGS04	2 gang 25mm (5 pcs per pack)	5	100
HGS05	2 gang 35mm (5 pcs per pack)	5	50
HGS06	1 gang 47mm (10 pcs per pack)	10	100
HGS07	2 gang 47mm (5 pcs per pack)	5	50
HGS07/4C	4 x 2 gang 47mm - Combination plate	5	-
HGS08	Dual 35mm (5 pcs per pack)	5	50
GRRB20/10	20mm rubber grommet (10 pcs per pack)	20pks	200pks

- Manufactured to BS 4662



# Wiring Accessories

Cat No.	Description	Inner Carton	Outer Carton
<b>Fuses - Bulk Pack</b>			
907	1 gang 35mm	10	100
908	2 gang 35mm	5	50
916	Dual 35mm	5	50
917	1 gang 47mm	10	100
918	2 gang 47mm	5	50
919	Round 35mm	10	100
920	Triple 35mm, 1 and 2 gang	5	50
907FP	1 gang 35mm with intumescent gasket	10	100
908FP	2 gang 35mm with intumescent gasket	5	50
916FP	Dual 35mm with intumescent gasket	5	50
917FP	1 gang 47mm with intumescent gasket	10	100
918FP	2 gang 47mm with intumescent gasket	5	50

• Manufactured to BS 5733

### Intumescent Gasket:

- Meets the 17th edition IEE & Document B of the UK Building Regulations
- Expands in a fire to act as a fully resistant fire barrier



# Wiring Accessories

Cat No.	Description	Inner Carton	Outer Carton
<b>Flex Connectors</b>			
452	10A, 3-pin shrouded non-reversible male and female	20	200
458	13A, 3-pin solid brass block through terminals	20	200



- Manufactured to BS 5733
- 2 plastic cable restraints retained by plated - steel slotted head screws
- Brass slotted head terminal screws

<b>Connector Strips</b>			
TS5	5A 12 way in packs of 10	10	1000
TS15	15A 12 way in packs of 10	10	500
TS30	30A 12 way in packs of 10	10	200
TS60	60A 12 way in packs of 10	10	100

- 380 Volts
- Captive brass screws & terminals, made in polyethylene
- Tested to BS EN 60998-1 & BS EN 609982-1

- H type
- Maximum working temperature 140°C
- CE marked



<b>Earth Clamps</b>			
EC141	Internal (12-32mm)	10	1000
EC142	Internal (32-50mm)	10	1000
EC151	Internal/external (12-32mm)	10	1000
EC152	Internal/external (32-50mm)	10	1000



• BS 951



a Nexus Industries Ltd. Group company



### UK Technical Support

**Tel:** 0845 194 7584

**Email:** [technical.support@bgelectrical.co.uk](mailto:technical.support@bgelectrical.co.uk)

UK & European Sales  
& Distribution Centre

Stafford Park 1  
Telford  
Shropshire  
England  
TF3 3BD

Tel: +44 (0) 1952 238 100  
Fax: +44 (0) 1952 238180  
Email: [sales@bgelectrical.co.uk](mailto:sales@bgelectrical.co.uk)

Asia Sales, Manufacturing  
& Distribution

No 1438, Jiachuang Road,  
Xiuzhou Industrial Park,  
Jiaxing, Zhejiang  
China  
P.C. 314031

Tel: +86 (0) 573 8357 0200  
Fax: +86 (0) 573 8357 0248  
Email: [sales@nexus.cn](mailto:sales@nexus.cn)

US Sales  
& Distribution

Nexus Innovations Inc  
8300 FM 1960  
West Suite 450  
Houston, Texas  
77070, United States

Tel: +1 281 671 6802  
Fax: +1 281 671 6605  
Email: [us\\_sales@nexusinds.com](mailto:us_sales@nexusinds.com)

Middle East  
Sales

Room 114  
Mohd. Abdulla Latif Al Mulla Bldg  
Al Muteena Street  
Deira Dubai, UAE  
PO Box 118704

Tel: +971 4 236 6890  
Fax: +971 4 236 6857  
Email: [mea\\_sales@nexusinds.com](mailto:mea_sales@nexusinds.com)

[www.bgelectrical.co.uk](http://www.bgelectrical.co.uk)