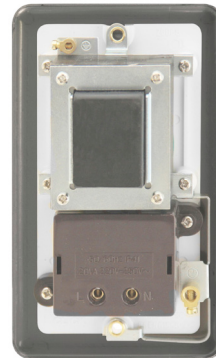


**Product Code:** DPSC100WH

**Description:** 115V/230V Dual Voltage Shaver Socket Outlet



## General Information

<b>Dimensions</b>	88mm (W) x 146mm (H) x 8mm (D)
<b>Dimensions With Gasket</b>	91mm (W) x 149mm (H) x 9mm (D)
<b>Plate Design &amp; Finish</b>	Rounded Profile Satin Chrome
<b>Insert &amp; Gasket Colour</b>	White
<b>Materials</b>	Front Plate: Stainless Steel Insert & Rear Housing: Urea Terminals: Brass Terminal Screws: Steel & Yellow Passivated Contacts: Silver "on-lay" Copper / Brass Internal Busbars: Formed Pressed Brass Earth Strap: Mild Steel
<b>Maximum Voltage</b>	240V~ 50/60Hz
<b>Load Rating</b>	20Va at 230V or 115V
<b>Plate Fixing Centres</b>	120.6mm (Vertical Fixing)
<b>Terminal Size</b>	3.5mmØ
<b>Terminal Torque</b>	0.5Nm
<b>Terminal Capacity</b>	2 x 1.5mm <sup>2</sup> or 1 x 2.5mm <sup>2</sup>
<b>Twin Earth Terminals</b>	Yes
<b>Product Markings</b>	Shavers Only, 230V~, 115V~
<b>Fuse</b>	PTC Resettable Fuse
<b>Ingress Protection</b>	IP21
<b>Back Box Depth</b>	47mm
<b>Termination Type</b>	Screw
<b>Operational Temperature</b>	-5°C to +40°C
<b>Warranty</b>	10 Years
<b>Standards</b>	BS EN 61558-1:2005+A1:2009 BS EN 61558-2-5:2010

## Additional Information

This outlet is not continuously rated and therefore not suitable for use as a permanent charging outlet. CLICK dual voltage shaver outlets incorporate a double wound isolating transformer rated 20Va at 230V or 115V and meets BS EN 61558-2-5:2010 making it safe for use in bathrooms. PTC resettable fuses increase resistance as temperature increases due to increased flow. PTC resettable fuses are designed to limit unsafe currents while allowing constant safe current levels, resistance will "reset" automatically when the fault is removed and temperature returns to a safe level. Ensure that the mains supply is isolated before commencing installation and refer to the circuit diagram with the relevant product. Bare earth cables must always be covered with appropriate sleeving and wired to the earth terminal.

UK Design Registration: 3015621