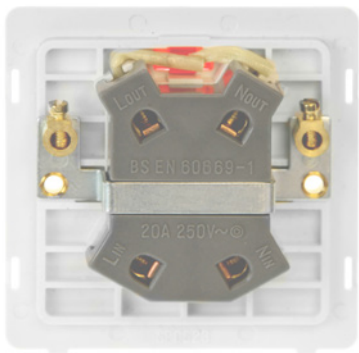


Product Code: SIN723PWBS

Description: 20A Ingot Double Pole Plate Switch With Neon Insert



Representative Image

General Information

Dimensions	82.5mm (W) x 82.5mm (H) x 2.5mm (D)
Insert Finish	Polar White Insert With Brushed Stainless Switch
Cover Plate Finishes Available	BS (Brushed Stainless), CH (Polished Chrome), SS (Stainless Steel), BK (Matt Black) & PW (Polar White)
Materials	Insert: Polycarbonate Rear Housing: Urea Switch Cover: Stainless Steel Neon Lens: Polycarbonate Terminals: Brass Terminal Screws: Steel & Yellow Passivated Contacts: Silver "on-lay" Copper / Brass Internal Busbars: Formed Pressed Brass Earth Strap: Mild Steel
Maximum Voltage	250V~ 50Hz
Load Rating	20A
Plate Fixing Centres	60.3mm
Terminal Size	5mmø
Terminal Torque	1.8Nm
Terminal Capacity	4 x 2.5mm ²
Double Pole	Yes
Twin Earth Terminals	Yes
Neon Indicator	Yes (Red)
Ingress Protection	IP20
Back Box Depth	35mm Minimum
Operational Temperature	-5°C to +40°C
Warranty	10 Years
Standards	BS EN 60669-1:1999 +A1:2002 +A2:2008

Additional Information

Ensure that the mains supply is isolated before commencing installation and refer to the circuit diagram with the relevant product.
Bare earth cables must always be covered with appropriate sleeving and wired to the earth terminal.

Product Code: SIN723PWBS

Description: 20A Ingot Double Pole Plate Switch With Neon Insert

Compatible Cover Plates	
Plate Dimensions	86mm (W) x 86mm (H) x 4mm (D)
Cover Plate Finishes Available	BS (Brushed Stainless), CH (Polished Chrome), SS (Stainless Steel), BK (Matt Black) & PW (Polar White)
Materials:	Decorative: Stainless Steel, Black & Polar White: Polycarbonate



SCP423BS



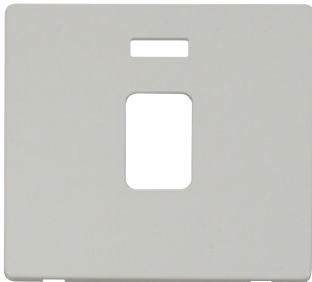
SCP423CH



SCP423SS



SCP423BK



SCP423PW