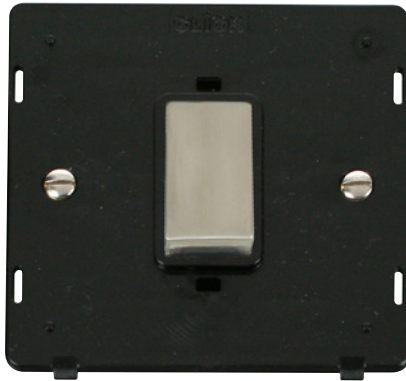


Product Code: SIN500BKSS

Description: 45A Ingot 1 Gang Double Pole Plate Switch Insert



Representative Image

**General Information**

<b>Dimensions</b>	82.5mm (W) x 82.5mm (H) x 2.5mm (D)
<b>Insert Finish</b>	Black Insert With Stainless Steel Switch
<b>Cover Plate Finishes Available</b>	BS (Brushed Stainless), CH (Polished Chrome), SS (Stainless Steel), BK (Matt Black) & PW (Polar White)
<b>Materials</b>	Insert: Polycarbonate Rear Housing: Urea Switch Cover: Stainless Steel Terminals: Brass Terminal Screws: Steel & Yellow Passivated Contacts: Silver "on-lay" Copper / Brass Internal Busbars: Formed Pressed Brass Earth Strap: Mild Steel
<b>Maximum Voltage</b>	250V~ 50Hz
<b>Load Rating</b>	45A
<b>Plate Fixing Centres</b>	60.3mm
<b>Terminal Size</b>	6mmø
<b>Terminal Torque</b>	2.5Nm
<b>Terminal Capacity</b>	1 x 16mm <sup>2</sup>
<b>Double Pole</b>	Yes
<b>Twin Earth Terminals</b>	Yes
<b>Ingress Protection</b>	IP20
<b>Back Box Depth</b>	47mm
<b>Operational Temperature</b>	-5°C to +40°C
<b>Warranty</b>	10 Years
<b>Standards</b>	BS EN 60669-1:1999 +A1:2002 +A2:2008

**Additional Information**

Ensure that the mains supply is isolated before commencing installation and refer to the circuit diagram with the relevant product.  
Bare earth cables must always be covered with appropriate sleeving and wired to the earth terminal.

Product Code: SIN500BKSS

Description: 45A Ingot 1 Gang Double Pole Plate Switch Insert

**Compatible Cover Plates**

Plate Dimensions	86mm (W) x 86mm (H) x 4mm (D)
Cover Plate Finishes Available	BS (Brushed Stainless), CH (Polished Chrome), SS (Stainless Steel), BK (Matt Black) & PW (Polar White)
Materials:	Decorative: Stainless Steel, Black & Polar White: Polycarbonate



SCP200BS



SCP200CH



SCP200SS



SCP200BK



SCP200PW