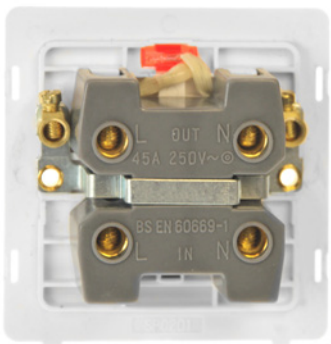
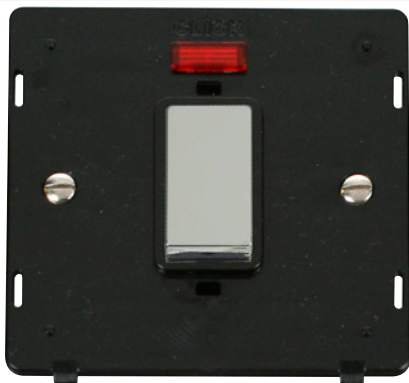


Product Code: SIN501BKCH

Description: 45A Ingot 1 Gang Double Pole Plate Switch With Neon Insert



Representative Image

General Information

Dimensions	82.5mm (W) x 82.5mm (H) x 2.5mm (D)
Insert Finish	Black Insert With Polished Chrome Switch
Cover Plate Finishes Available	BS (Brushed Stainless), CH (Polished Chrome), SS (Stainless Steel), BK (Matt Black) & PW (Polar White)
Materials	Insert: Polycarbonate Rear Housing: Urea Switch Cover: Stainless Steel Neon Lens: Polycarbonate Terminals: Brass Terminal Screws: Steel & Yellow Passivated Contacts: Silver "on-lay" Copper / Brass Internal Busbars: Formed Pressed Brass Earth Strap: Mild Steel
Maximum Voltage	250V~ 50Hz
Load Rating	45A
Plate Fixing Centres	60.3mm
Terminal Size	6mmø
Terminal Torque	2.5Nm
Terminal Capacity	1 x 16mm²
Double Pole	Yes
Twin Earth Terminals	Yes
Neon Indicator	Yes (Red)
Ingress Protection	IP20
Back Box Depth	47mm
Operational Temperature	-5°C to +40°C
Warranty	10 Years
Standards	BS EN 60669-1:1999 +A1:2002 +A2:2008

Additional Information

Ensure that the mains supply is isolated before commencing installation and refer to the circuit diagram with the relevant product.
Bare earth cables must always be covered with appropriate sleeving and wired to the earth terminal.

Product Code: SIN501BKCH

Description: 45A Ingot 1 Gang Double Pole Plate Switch With Neon Insert

Compatible Cover Plates

Plate Dimensions	86mm (W) x 86mm (H) x 4mm (D)
Cover Plate Finishes Available	BS (Brushed Stainless), CH (Polished Chrome), SS (Stainless Steel), BK (Matt Black) & PW (Polar White)
Materials:	Decorative: Stainless Steel, Black & Polar White: Polycarbonate



SCP201BS



SCP201CH



SCP201SS



SCP201BK



SCP201PW