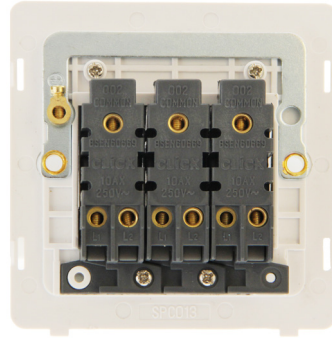
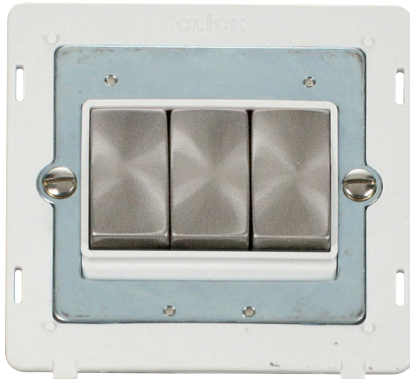


Product Code: SIN413PWBS

Description: 10AX Ingot 3 Gang 2 Way Plate Switch Insert



General Information

Dimensions	82.5mm (W) x 82.5mm (H) x 2.5mm (D)
Insert Finish	Polar White Insert With Brushed Stainless Switches
Cover Plate Finishes Available	BS (Brushed Stainless), CH (Polished Chrome), SS (Stainless Steel), BK (Matt Black), PW (Polar White) & RD (Red)
Materials	Insert: Polycarbonate Switch Cover: Stainless Steel Rear Housing: Nylon Terminals: Brass Terminal Screws: Steel & Yellow Passivated Contacts: Silver "on-lay" Copper / Brass Internal Busbars: Formed Pressed Brass Earth Strap: Mild Steel
Maximum Voltage	250V~ 50Hz
Load Rating	10AX (Suitable for Inductive Loads)
Plate Fixing Centres	60.3mm
Terminal Size	3.5mmø
Terminal Torque	0.5Nm
Terminal Capacity	4 x 1.5mm ² or 2 x 2.5mm ²
Two Way	Yes
Ingress Protection	IP20
Back Box Depth	25mm Minimum
Termination Type	Screw
Operational Temperature	-5°C to +40°C
Warranty	10 Years
Standards	BS EN 60669-1:1999 +A1:2002 +A2:2008

Additional Information

Ensure that the mains supply is isolated before commencing installation and refer to the circuit diagram with the relevant product.
Bare earth cables must always be covered with appropriate sleeving and wired to the earth terminal.
Interchangeable with modules in the MiniGrid Range.

UK Design Registration: 3015621

Product Code: SIN413PWBS

Description: 10AX Ingot 3 Gang 2 Way Plate Switch Insert

Compatible Cover Plates

Plate Dimensions	86mm (W) x 86mm (H) x 4mm (D)
Cover Plate Finishes Available	BS (Brushed Stainless), CH (Polished Chrome), SS (Stainless Steel), BK (Matt Black), PW (Polar White) & RD (Red)
Materials:	Decorative: Stainless Steel, Black, Polar White & Red: Polycarbonate



SCP403BS



SCP403CH



SCP403SS



SCP403BK



SCP403PW



SCP403RD