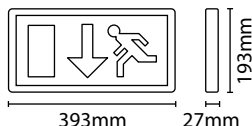


IP20 SLIM LED MAINTAINED EMERGENCY EXIT BOX

White / 5.2W / 30,000 hrs / IP20

An aesthetically pleasing, low energy, ultra slim alternative to conventional exit boxes

- Ultra slim design: excellent solution where a more compact fitting is required
- 3 hour maintained mode as standard which can also be configured for non maintained operation
- Diffuser on base: for added downward illumination of exit path
- Interchangeable down, up, left & right arrow exit legends included
- Long life energy efficient LED light source eliminates lamp replacement cycle without compromising panel visibility distance
- Facility for remote switching
- LED charge light
- For wall mounting only
- 34 metres viewing distance
- M.O.M: 1 / O.P.Q: 10



EternaPro
LED
5 YEAR
Extended Warranty
Available on application



All legends comply with current regulations

Code

EBLSLIMM

Down, up, left & right legends included



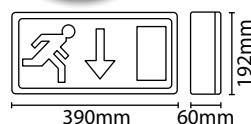
IP20 LED MAINTAINED EMERGENCY EXIT BOX SIGN

White / 4W / 30,000 hrs / IP20

Low energy alternative to standard emergency exit signs.

- Steel construction
- 3 hour maintained mode as standard which can also be configured for non maintained operation
- Facility for remote switching
- Interchangeable polycarbonate down arrow exit legend included
- Diffuser on base: for added downward illumination of exit path
- Long life energy efficient LED light source eliminates lamp replacement cycle without compromising panel visibility distance
- LED charge light and battery test button
- Viewing distance: 34m
- **EXIT3MLED** = M.O.M: 6 / O.P.Q: 6
- **Legends** = M.O.M: 1 / O.P.Q: 100

EternaPro
LED
5 YEAR
Extended Warranty
Available on application



Code
EXIT3MLED

All legends comply with current regulations



Full range of alternative legend directional panels available

EBLGLD



EBLGLR



EBLGLU



IP65 LED MAINTAINED / NON MAINTAINED EMERGENCY BULKHEADS

BOTH FITTINGS: White / 6000K / 30,000 hrs / IP65

- Polycarbonate construction • Internal or external use
- 20mm gland entries as standard
- Minimum 3 hour functionality in emergency mode
- High output LEDs with bright white light
- Semi recessed fixing: allows a more discreet installation option
- Dedicated self adhesive legend pack included with a combination of symbols: allows multiple exit path designation options (**LGDSET**)
- **Fitting / Frame** = M.O.M: 1 / O.P.Q: 12
- **LGDSET** = M.O.M: 12 / O.P.Q: 12

Low energy alternative to standard fluorescent emergency bulkheads.

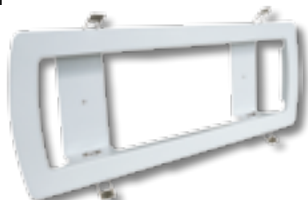
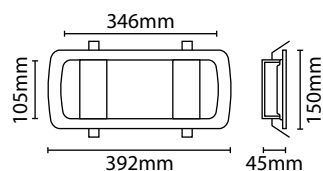
All legends comply with current regulations

EMLED3M:

- Facility for remote switching and non-maintained mode
- 235 lm when connected to mains, 150 lm when connected to battery

BULKHEAD FRAME (BULKFRAME):

- For use with emergency bulkheads
- Pressed steel construction • Spring retaining clips
- Semi recessed fixing: allows a more discreet installation option
- Hole cut out size: 350mm x 117mm



EternaPro
LED
5 YEAR
Extended Warranty
Available on application

Code	Version	Wattage	Lumens
EMLED3M	Maintained	7W	235/150 lm
EMLED3NM	Non Maintained	2W	150 lm

Hinged gear tray & push fit terminal block: allows for quicker and easier installation and maintenance

