

Please read these instructions before installation and retain for future reference

Mainline Track Range

JC14004

Track connector

Available in: Black or White

240V 50Hz
16 Amp max



Important Information

It is recommended that luminaires are installed by a qualified electrician who should ensure that the installation complies with the current IEE wiring regulations BS7671: 2008. Any broken or damaged parts should be replaced as soon as possible. JCC will not accept responsibility for any claims arising from a sub-standard installation.

Important User Advice

Always switch off mains supply before fitting or servicing.

Please Note

All pre - cut mains track, is supplied complete with ready inserted dead end insulation caps. The insulation cap is removed to allow the insertion of the track connector.

Sizes shown in the JCC catalogue are by way of a guide only.

Features:

- UK approved 16 Amp mains track.
- Manufactured in accordance to EN60 570.
- Fully Earthed system.
- Comprehensive range of accessories.
- Easy to install.

Installation

1. Remove the dead end insulated caps from the end of the track sections you want to join.
2. Ensure the two sections of track you are joining are aligned correctly with the phase (+ L) on the same side (this is indicated by the groove on one side of the track section).
3. Push the the connector into the first track section until the end of the track is flush with the centre part of the track connector, then repeat this process with the second piece of track section. (As per fig .1)
4. Once both sections are pushed firmly together against the centre of the track connector tighten the two locking screws to secure the track section together.

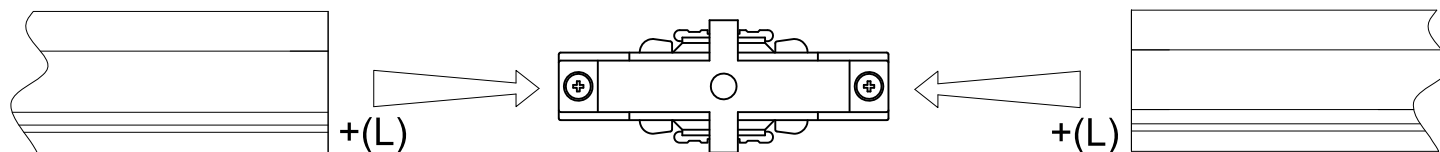
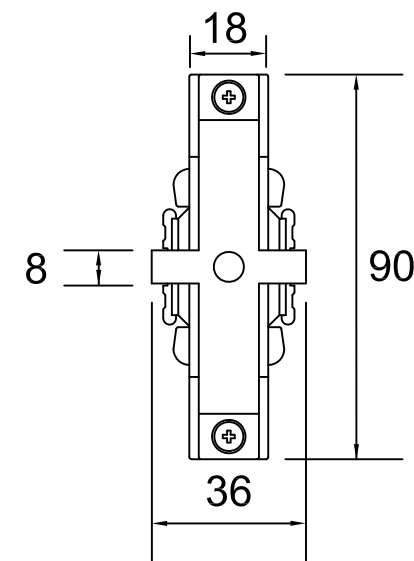


Fig.1.

Profile & Dimensions



All dimensions in millimeters.