

Channel Nuts, Bracketry &amp; Accessories

## Easyfit Channel Nut, Channel Spring Nuts

The Easyfit Channel Nut and our channel spring nuts range are compliant to BS6946 (nut only) and UK tested for complete confidence

Our plain channel nuts, short spring nuts and long spring nuts are also authorised for use by London Underground as compliant to LU Standard I-085

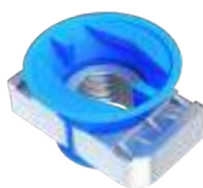
### Easyfit Channel Nut



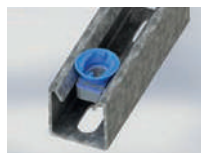
Size	Code	Pack
M6	CN6	100
M8	CN8	100
M10	CN10	100
M12	CN12	100

Steel nut is BZP finish

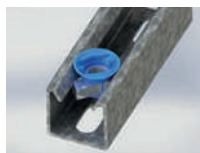
Easyfit cone manufactured from nylon 6



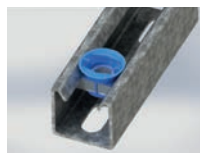
### How the Easyfit works



1. Place in strut



2. Turn clockwise 90°



3. Secured and ready

### Saves up to 30%

Installation time when compared with traditional spring nuts and fits all standard strut depths

### Only four sizes to stock

One size fits all standard strut depths

### One-handed installation

Designed for the contractor, finger grips within the nylon cone make installation easy

### Slide & hold

No springs allow for smooth positioning within both standard and slotted strut with the easyfit's non-slip cone holding the nut in place, even on vertical channel

### Exclusive to Metpro

The Easyfit Channel Nut is only available from Metpro throughout the UK & Europe

### Plain Channel Nuts



Size	Zinc Plated	HDG*	316 Stainless Steel**	Pack
M6	CS20	CS20/GA	CS20/SS	100
M8	CS21	CS21/GA	CS21/SS	100
M10	CS22	CS22/GA	CS22/SS	100
M12	CS23	CS23/GA	CS23/SS	100

\*Hot Dip Galvanised

\*\*Material Grade for body

### Short Spring Nuts



Size	Zinc Plated	HDG*	316 Stainless Steel**	Pack
M6	CS24	CS24/GA	CS24/SS	100
M8	CS25	CS25/GA	CS25/SS	100
M10	CS26	CS26/GA	CS26/SS	100
M12	CS27	CS27/GA	CS27/SS	100

\*Hot Dip Galvanised

\*\*Material Grade for both body and spring

### Long Spring Nuts



Size	Zinc Plated	HDG*	316 Stainless Steel**	Pack
M6	CS28	CS28/GA	CS28/SS	100
M8	CS29	CS29/GA	CS29/SS	100
M10	CS30	CS30/GA	CS30/SS	100
M12	CS31	CS31/GA	CS31/SS	100

\*Hot Dip Galvanised

\*\*Material Grade for both body and spring



PLAIN



SHORT SPRING



LONG SPRING