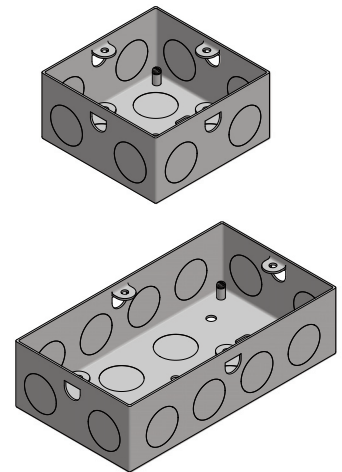


Manufactured out of sheet steel to comply with BS4662

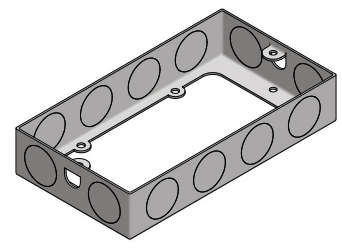
## Flush Back Boxes - Steel

Part No.	Depth	Size	Fixed Lugs	Adjust Lugs	Inner Qty.
EWS1	16mm	1 Gang	1	1	20
EWS2	25mm	1 Gang	3	1	10
EWS3	25mm	2 Gang	1	1	5
EWS4	35mm	1 Gang	3	1	10
EWS4/25	35mm	1 Gang	3	1	10
EWS5	35mm	2 Gang	1	1	5
EWS6	35mm	Dual Box	6	2	5
EWS7	47mm	1 Gang	3	1	10
EWS8	47mm	2 Gang	1	1	5



## Extension Boxes - Steel

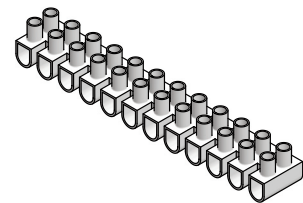
Part No.	Depth	Size	Fixed Lugs	Adjust Lugs	Inner Qty.
EWS9	16mm	1 Gang	1	1	20
EWS10	16mm	2 Gang	1	1	10
EWS11	25mm	1 Gang	3	1	10
EWS12	25mm	2 Gang	1	1	5
EWS13	35mm	1 Gang	3	1	10
EWS14	35mm	2 Gang	1	1	5



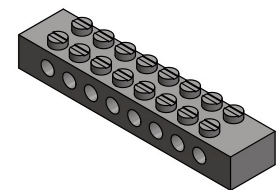
## Terminal Blocks

Metpro 12 way polyethylene terminal blocks are readily sub-divided and fitted with brass terminals with brass screws. Max Temperature 80°C.

12 Way Polyethylene Terminal blocks	Part No.	Pack
3 Amp	CS3A	10
5 Amp	CS5A	10
15 Amp	CS15A	10
30 Amp	CS30A	10
60 Amp	CS60A	5



Brass Terminal blocks	Part No.	Pack
Earth Block 4 Way	EB4	20
Earth Block 8 Way	EB8	20

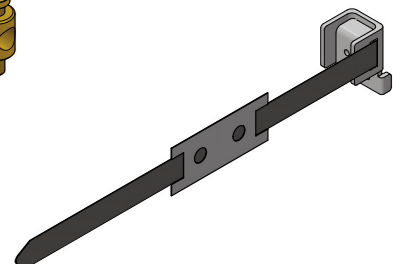


## Earthing Products

Brass Earth Studs	Part No.	Pack
M4 Earth Stud	BES	100



Earth Clamps	Length	Part No.	Pack
For Pipe Diameter 12-32mm	6" (150mm)	EC14	25
For Pipe Diameter 50-75mm	12" (300mm)	EC14/L	25



See page 9 for PVC Dry Lining and Surface Mounted Boxes!