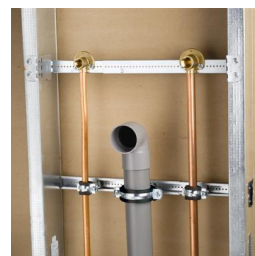
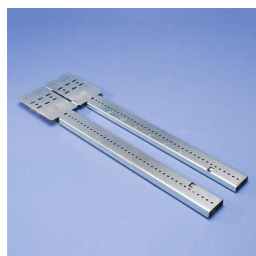


Telescoping Screw Gun Box Bracket – TSGB16 (187190)



- Can mount multiple boxes
- Notched and marked for easy identification and bending
- Improved design with stamped inch markings and pilot holes accelerates precise box conduit mounting between studs
- Pilot holes allow easy box attachment with a screwdriver
- Requires only a screw gun to install
- Can be mounted to face or inside of stud
- Adjustable for non-standard stud spacing
- Interlocking tab prevents accidental disassembly
- Unique, one-piece, break apart design
- Reduces movement of the box when used with flexible conduit, ENT, MC, AC or non-metallic sheathed cable



Part Number	TSGB16
Article Number	187190
Material	Steel
Finish	Pre-galvanized
Stud Spacing	11" – 18" 280 – 458 mm
Box Depth	1 1/2" 2 1/8" 38 – 54 mm
Standard Packaging Quantity	50 pc
UPC	78285647616
UNSPSC	39121321
EAN-13	8711893038347
ETIM	EC000464
Approvals	cULus®

cULus is a registered certification mark of UL LLC.

WARNING

ERICO products shall be installed and used only as indicated in ERICO's product instruction sheets and training materials. Instruction sheets are available at www.erico.com and from your ERICO customer service representative. Improper installation, misuse, misapplication or other failure to completely follow ERICO's instructions and warnings may cause product malfunction, property damage, serious bodily injury and death.

Copyright © 2014 ERICO International Corporation. All rights reserved.

CADDY, CADWELD, CRITEC, ERICO, ERIFLEX, ERITECH, and LENTON are registered trademarks of ERICO International Corporation.

