

Swifts® MRF medium duty fittings

universal bracket and fishplate

25

■ Universal bracket

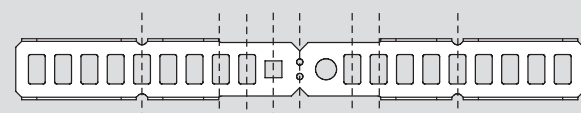
The universal bracket can be easily folded at one or more of the 8 predetermined points. By overfolding a couple of times, the bracket can be split, for example on the centre line to make a hinged coupler or in between the outer flanges if the length of the bracket needs to be reduced

The square hole is provided to locate the shoulder of the quick bolt fastener – this side should be facing inwards towards the tray to avoid snagging cables

The pitch between each fold point is designed to match up with the Swifts range of MRF cable tray systems

By using different configurations the bracket can be folded to create numerous functions on-site, examples of which are shown below
For MRF 300mm to 900 mm straight lengths, fixing holes must be drilled into the side wall of the tray

Cat. No. MRFUB **F**



■ Installation (typical)

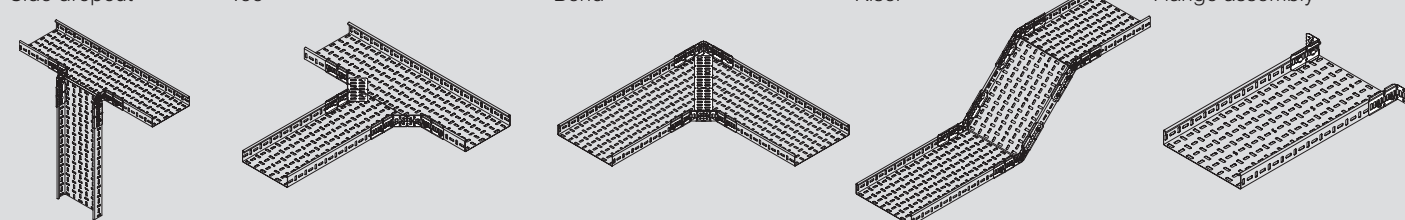
Side dropout

Tee

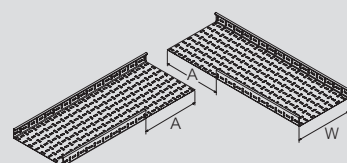
Bend

Riser

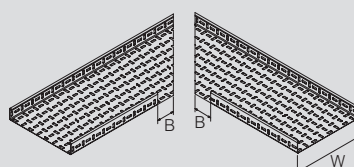
Flange assembly



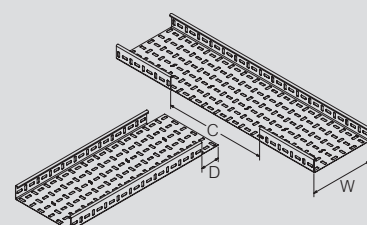
■ Dimensions



Above dimensions are for 90° bend with overlap joint



Above dimensions are for 90° bend with diagonal joint. Diagonal cuts are 45°



Note 1 : Dimensions are for tee with fishplate joint

Note 2 : For overlap joint tee use 'D' + 50

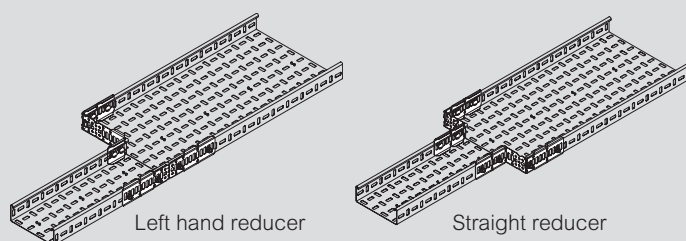
Cat. Nos.	Width (W)	Overlap A	Diagonal B	C	Tee D
MRFL 75 F	75	80	65	195	60
MRFL 100 F	100	105	65	220	60
MRFL 150 F	150	155	65	270	60
MRFL 225 F	225	230	65	345	60
MRFL 300 F	300	305	65	420	60

Illustrations : SRF shown. MRF similar

■ Handed and straight reducer configurations

Figures show approximated reduced width

Left or right handed reducers are not currently available as a standard factory fabricated fitting



MRFL															
Smaller Size	50 mm		75 mm		100 mm		150 mm		225 mm		300 mm		450 mm		
Larger Size	Handed	Straight	Handed	Straight	Handed	Straight	Handed	Straight	Handed	Straight	Handed	Straight	Handed	Straight	
75 mm	25	12	–	–	–	–	–	–	–	–	–	–	–	–	–
100 mm	50	25	25	12	–	–	–	–	–	–	–	–	–	–	–
150 mm	100	50	75	37	50	25	–	–	–	–	–	–	–	–	–
225 mm	–	87	150	75	125	62	75	37	–	–	–	–	–	–	–
300 mm	–	–	–	112	–	100	150	75	75	37	–	–	–	–	–
450 mm	–	–	–	–	–	–	–	150	–	112	150	75	–	–	–
600 mm	–	–	–	–	–	–	–	–	–	–	–	150	150	75	–

All dimensions (mm) are nominal