

Copper Reducing Pin Terminals

Un-insulated Solid Reducing Copper Pin Terminal

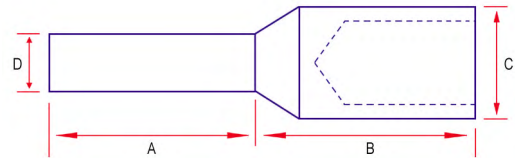
Material: Electrolytic Copper

Finish: Electro-Tin Plated

Voltage: 600 - 1000V



Part No.	Cond. Size mm ²	Dimensions mm			
		A	B	C	D
10USP	10	10	13	6.2	3.8
16USP	16	13	17	7.1	3.8
25USP	25	20	17	9.0	5.0
35USP	35	20	17	10.6	5.0
50USP	50	20	21	12.4	7.5
70USP	70	20	23	14.7	8.0
95USP	95	20	26	17.5	8.0
120USP	120	25	25	19.4	11.5
150USP	150	32	32	21.5	11.5
185USP	185	32	32	24.0	11.5
240USP	240	32	32	27.3	15.6
300USP	300	32	32	30.6	15.6



Alternative pin lengths/diameters are available to special order.
Special bespoke version to customer specification available - ask for details.
Sold in eaches.

Un-insulated Reducing Pin Terminal

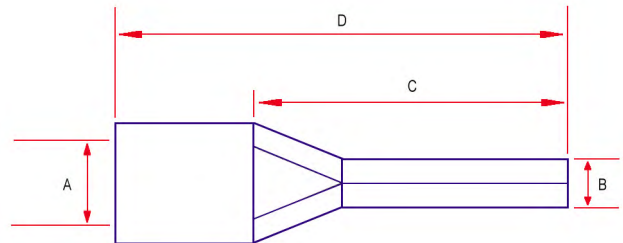
Material: Electrolytic Copper

Finish: Electro-Tin Plated

Voltage: 600 - 1000V



Part No.	Cond. Size mm ²	Dimensions mm			
		A	B	C	D
10UP	10	4.8	4.3	14.5	23.5
16UP	16	5.9	5.5	18.0	28.0
25UP	25	7.0	7.0	20.3	32.0
35UP	35	8.9	8.0	24.5	39.0
50UP	50	10.0	9.5	26.0	45.0
70UP	70	11.5	11.0	31.0	55.0



Sold in eaches.

See page 165 for recommended tooling. Note: UP Pins should only be crimped using an indent-style tool.