



Omnicare Design with Grab Kit

Ref: CINCDES08WGRB - 8.5 kW
CINCDES09WGRB - 9.5 kW



Omnicare Design with Extended Kit

Ref: CINCDES08W - 8.5kW
CINCDES09W - 9.5kW

Design:

- Stylish form with a variety of finish choices – an option to suit all bathrooms
- Tactile temperature dial with soft grey tones offers helpful visual contrast
- A choice of kit depending on your needs; extended kit for more flexibility while showering, or the grab kit for the optimum safety and support
- The Omnicare connects to both analogue and digital waste pumps
- With multiple pipe and cable entry points, a generous footprint and a kit for plugging any existing holes in your wall, the Omnicare is designed with ease of replacement in mind

Safety:

- Constantly regulating water temperature within $\pm 1^\circ\text{C}$, the Omnicare gives the maximum temperature reassurance with the BEAB Care mark
- The Design unit has RNIB approval
- Safe-set™ allows the maximum temperature to be set whilst allowing full rotation of temperature dial
- Choice to set the duration of the shower ranging from 5 minutes to 30 minutes, for extra peace of mind whilst showering
- Dual purpose grab rail option is designed to withstand up to 150kg support load, providing a stylish grab rail option if and when it is needed
- Power on illumination along with audible feedback allows ease of use for all users

Simplicity:

- The soft press start/stop requires very little effort when wanting to start or stop your showering experience
- Looped lever handle in the centre of the unit for intuitive use, with its low resistance operation the perfect showering settings can be achieved easily
- With a 2m hose and a lower level handset holder offered with the grab rail, this gives you the flexibility of a seated or standing shower



supporting blind and partially sighted people

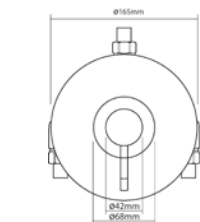
To find out more about our inclusive accessories including our unique grab kit

See page 44 - 45

Elina Inclusive TMV3 Concentric Built-in Mixer

thermostatic mixer shower

Temperature Control	Thermostatic
Plumbing System Compatibility	Low and high pressure
Inlet Connections	15mm compression
Water Entry Points	Rising, falling, back
Outlet Connection	½" BSP top or bottom
Minimum Running Pressure/Flow	0.1Bar @ 8l/min
Maximum Running Pressure	5 Bar
Open Outlet Flow Rate at 0.1Bar	7l/min
Maximum Flow with Flow Limiters Fitted	12l/min
Approvals, Complies with	WRAS, TMV3
TMV3 Designation	HP-S
Built-In depth (Built-In only)	55mm minimum
Guarantee	5 years



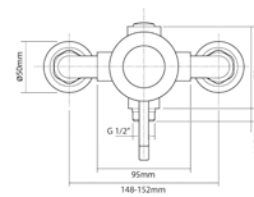
Finish	Code
Chrome	ELICMINCBTVO*
Chrome	ELICMINCBT

*Valve only

Elina Inclusive TMV3 Concentric Exposed Mixer

thermostatic mixer shower

Temperature Control	Thermostatic
Plumbing System Compatibility	Low and high pressure
Inlet Connections	15mm compression
Water Entry Points	Rising, falling, back
Outlet Connection	½" BSP top or bottom
Minimum Running Pressure/Flow	0.1Bar @ 8l/min
Maximum Running Pressure	5 Bar
Open Outlet Flow Rate at 0.1Bar	7l/min
Maximum Flow with Flow Limiters Fitted	12l/min
Approvals, Complies with	WRAS, TMV3
TMV3 Designation	HP-S
Guarantee	5 years



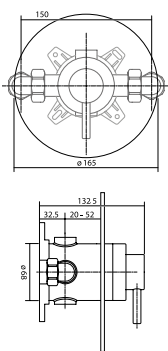
Finish	Code
Chrome	ELICMINCEXVO*
Chrome	ELICMINCEX

*Valve only

Elina Inclusive TMV3 Sequential Built-in Mixer

thermostatic mixer shower

Temperature Control	Thermostatic
Plumbing System Compatibility	Low and High pressure
Inlet Connections	15mm compression to flat face union
Water Entry Points	Rising, falling, back
Outlet Connection	½" BSP top or bottom
Minimum Running Pressure/Flow	0.1Bar @ 8l/min
Maximum Running Pressure	5 Bar
Maximum Static Pressure	10 Bar
Open Outlet Flow Rate at 0.1Bar	6l/min
Maximum Flow with Flow Limiters Fitted	12l/min
Pipe Inlet Centres	150mm
Approvals, Complies with	WRAS, TMV3
Built-In depth (Built-In only)	55mm minimum
Guarantee	5 years

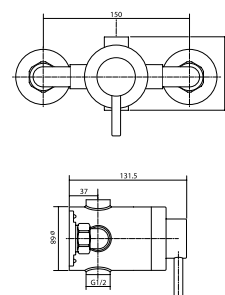


Finish	Code
Chrome	ELITMV3BTSLS

Elina Inclusive TMV3 Sequential Exposed Mixer

thermostatic mixer shower

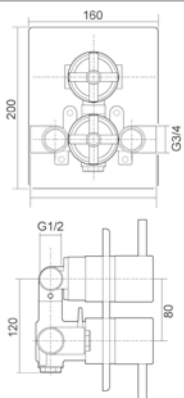
Temperature Control	Thermostatic
Plumbing System Compatibility	Low and High pressure
Inlet Connections	15mm compression to flat face union
Water Entry Points	Rising, falling, back
Outlet Connection	½" BSP top or bottom
Minimum Running Pressure/Flow	0.1Bar @ 8l/min
Maximum Running Pressure	5 Bar
Maximum Static Pressure	10 Bar
Open Outlet Flow Rate at 0.1Bar	6l/min
Maximum Flow with Flow Limiters Fitted	12l/min
Pipe Inlet Centres	150mm
Approvals, Complies with	WRAS, TMV3
Built-In depth (Built-In only)	55mm minimum
Guarantee	5 years



Finish	Code
Chrome	ELITMV3EXSL

Elina Thermo TMV2 Dual Control with Diverter

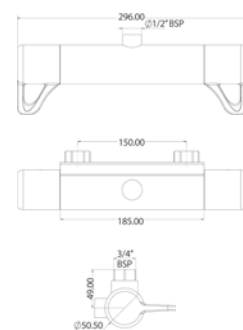
Temperature Control	Thermostatic
Plumbing System Compatibility	Low and High pressure
Inlet Connections	¾" BSP
Water Entry Points	Rising, falling, back
Outlet Connection	½" BSP
Minimum Running Pressure/Flow	0.1Bar @ 8l/min
Maximum Running Pressure	5 Bar
Maximum Static Pressure	10 Bar
Open Outlet Flow Rate at 0.1Bar	5.4l/min
Maximum Flow with Flow Limiters Fitted	8l/min
Approvals, Complies with	BS EN 1111, TMV2, WRAS
Built-In depth (Built-In only)	65mm minimum
Guarantee	5 years



Finish	Code
Chrome	ELITBDCDIV

Elina inclusive TMV3 Bar Mixer

Temperature Control	Thermostatic
Plumbing System Compatibility	Low and High pressure
Inlet Connections	15mm push fit
Outlet Connection	½" BSP bottom
Minimum Running Pressure/Flow	0.1Bar @ 8l/min
Maximum Running Pressure	5 Bar
Maximum Static Pressure	10 Bar
Open Outlet Flow Rate at 0.1Bar	3.5l/min
Maximum Flow with Flow Limiters Fitted	12l/min
Pipe Inlet Centres	150mm
Approvals, Complies with	TMV3, WRAS
Guarantee	5 years



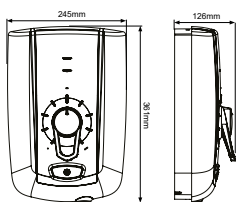
Finish	Code
Chrome	ELITHBMINC3
Chrome	ELITHBMINC3BOT*

*With grab kit

Omnicare Style

thermostatic electric shower
8.5kW and 9.5kW (240v)

Temperature Control	Thermostatic
Power Ratings	8.5kW, 9.5kW (240v)
Inlet Connection	15mm compression
Water Entry Points	Top, bottom, back (right hand side of unit)
Cable Entry Points	Top, top left, bottom, back (right hand side of unit)
Outlet Connection	½" BSP
Plumbing System Compatibility	Mains cold water only
Minimum Running Pressure/Flow	0.5 Bar at 8l/min*
Maximum Static Pressure	10 Bar
Surface Mounted Only	
Approvals, Complies with	BEAB, BEAB CARE, CE, BSI Kitemark
Guarantee	2 years



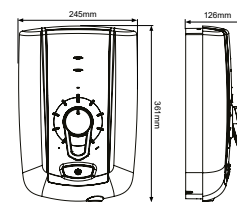
Product	Power	Code
with Extended Kit	8.5kW	CINCSTY08W
with Extended Kit	9.5kW	CINCSTY09W
with Grab Kit	8.5kW	CINCSTY08WGRB
with Grab Kit	9.5kW	CINCSTY09WGRB

*Recommend minimum running pressure/flow for full performance 1 bar @8l/min

Omnicare Design

thermostatic electric shower
8.5kW and 9.5kW (240v)

Temperature Control	Thermostatic
Power Ratings	8.5kW, 9.5kW (240v)
Inlet Connection	15mm compression
Water Entry Points	Top, bottom, back (right hand side of unit)
Cable Entry Points	Top, top left, bottom, back (right hand side of unit)
Outlet Connection	½" BSP
Plumbing System Compatibility	Mains cold water only
Minimum Running Pressure/Flow	0.5 Bar at 8l/min*
Maximum Static Pressure	10 Bar
Surface Mounted Only	
Approvals, Complies with	BEAB, BEAB CARE, CE, BSI Kitemark, RNIB
Guarantee	2 years



Product	Power	Code
with Extended Kit	8.5kW	CINCDES08W
with Extended Kit	9.5kW	CINCDES09W
with Grab Kit	8.5kW	CINCDES08WGRB
with Grab Kit	9.5kW	CINCDES09WGRB

*Recommend minimum running pressure/flow for full performance 1 bar @8l/min