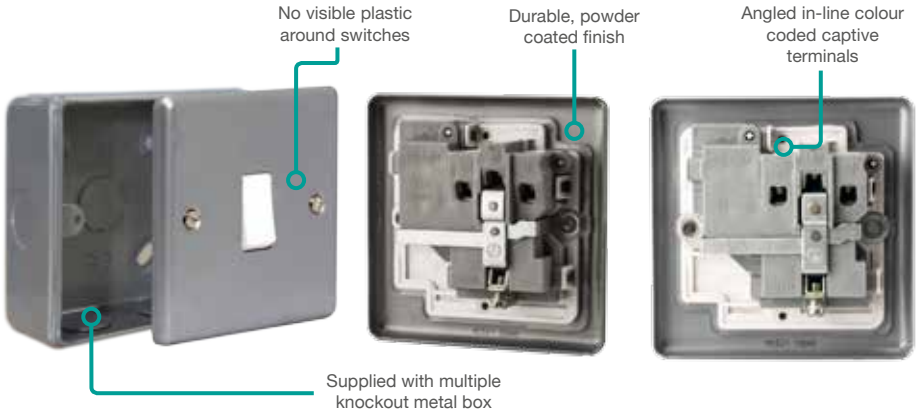




Metal Clad Wiring Accessories

A rugged scratch resistant metal, suitable for everyday use in commercial and industrial environments

Metal Clad Heavy Duty Wiring Accessories



Switches & Sockets	102
RCD Protection	102
Round Pin Outlets	103
45 Amp Switches	103
20 Amp Switches	103
FCUs	104
Blank & Euro Module	104
Telephone & Data	104
Key Controlled Socket	105
Surface Boxes	105

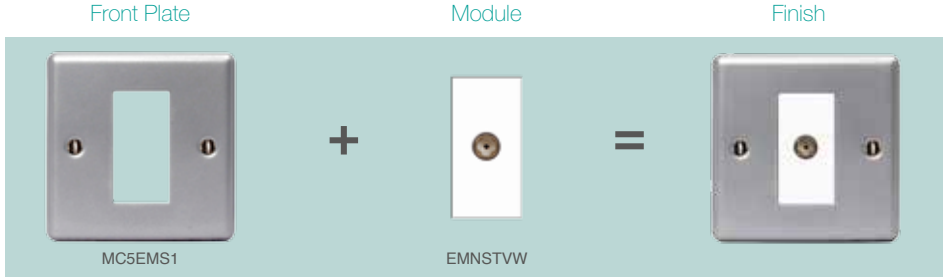
Range Content



Euro Module - Range Extension

A flexible solution of power, data, telephone, television and audio combinations to suit the wide ranging needs of the customer.

- Select the desired combination of front plate and module(s)
- Simple installation, wire the module through the front plate aperture then click the module into place
- Modules of mains and extra low voltage rating must not be fitted to the same front plate aperture Ref. BS 7671:2008

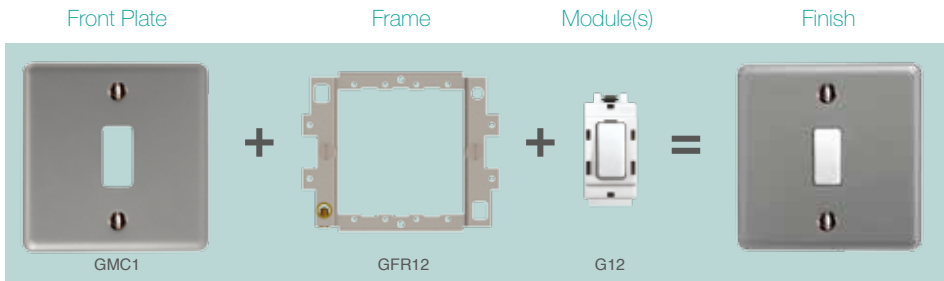


For full information on Euro Modules, please see pages 48-55

Grid - Range Extension

A customisable selection of power grid modules that provide a seamless appearance with the associated wiring accessories.

- Firstly, screw the grid frame to the mounting box and wire the modules
- Then slot the module on to the frame and click into place
- Finally, fit the finished plate



For full information on Nexus Grid, please see pages 40-47