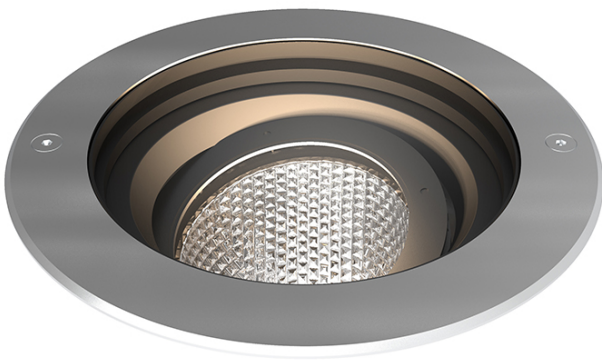




## AFRWOLED/185



### Features

High performance LED adjustable inground uplight

Exceeds performance of 35W CDM-T

304L stainless steel bezel and powder coated aluminium housing

Supplied c/w installation housing for additional protection and ease of installation

Integral driver and pre-wired with 2 metres of rubber insulated cable

Static load test to 2000kg and therefore suitable for vehicular and pedestrian traffic

LED lifespan L70 36,000 hours

Non-dimmable

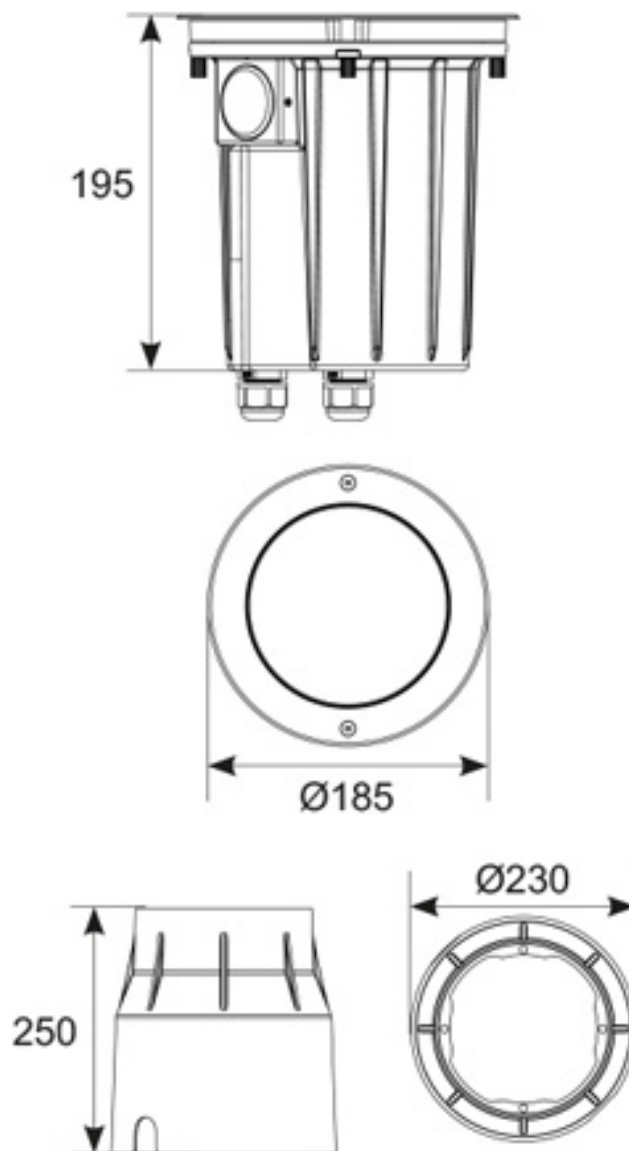
## General Information

Lamp Type	LED
Colour / Finish	Stainless Steel
IP Rating	IP67
IK Rating	IK10
Class Protection	1
Internal / External	External
Surface / Recessed / Suspended	Recessed
Warranty (Years)	5
CE Mark	Yes
Diameter (mm)	185
Depth (mm)	195

## Technical Information

Wattage	15W
Lumens Delivered	903lm
Lm/W	60lm
Beam Angle	11
CRI	Ra 80
CCT	3000K
Input	230V
Hertz	50Hz
Operating Temp	-20 to 40°C

Datasheet generated from <https://onetimepim.com> last updated Friday, July 30, 2021 11:32:21 AM



**Installation Sleeve**