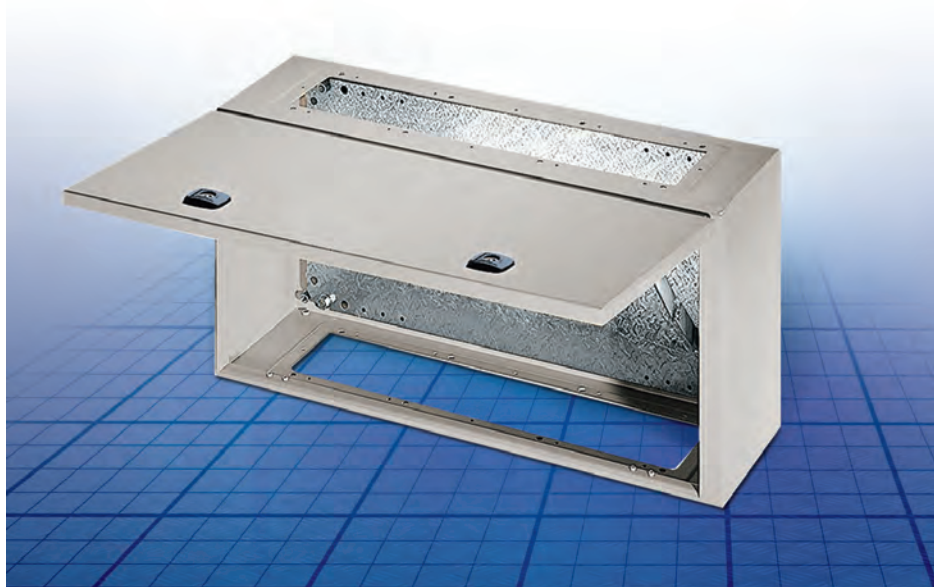


Wall Mounting Enclosures

MAP

Mild steel panel

The MAP is an incredibly versatile enclosure, for use in either stand alone applications, or in conjunction with MAS/MAD as a cableway.



MULTIMOUNT®



IP 66 / NEMA 4, 12, 13
IK 10

Technical data

Material: Body: 1.4mm mild steel. Panel: 1.4mm mild steel. Mounting plate: 2mm galvanized steel.

Body: Folded and seam welded. Four 8.5mm diameter holes for wall fixing pressed out in 20.4mm diameter x 2mm depressions to allow air circulation around the rear part of the enclosure.

Front panel: Surface mounted with 90° opening. Concealed removable hinges with captive pin. Hinges can be mounted to allow top or bottom opening. Mechanical door stop keeps panel open. One removable mounting profile on the hinge side. Sealing is ensured by an extruded one piece polyurethane gasket.

Lock: Customised lock with double grip for easy opening of the panel. double-bit 3mm insert and 90° movement. Other inserts are available as an accessory.

Mounting plate: The mounting plate is marked vertically at 10mm intervals for easy horizontal positioning of equipment. On the top and bottom there are holes to facilitate cable fixing. Fixed onto M8 press welded studs to the rear of the enclosure.

All sides from 800mm and above are strengthened by folded edges. By using the AMG accessory the mounting plate position can be adjusted to any depth.

Gland Plate Opening: In top and bottom. Situated at the far rear of the enclosure to make cabling onto the mounting plate easier. Gland plates (AF) and gaskets (AG) are not included. The gland plates used are those delivered with the MAS or MAD enclosures.

Protection: Mounted stand alone complies with IP 66, and NEMA 4, 12 and 13, as long as you mount the gland plate(s) and gasket(s), supplied as an accessory. Combined with MAS or MAD complies with IP 55 and NEMA 12. For outdoor installation the use of rain hood ARF is recommended, and the corrosion resistance must be taken in consideration.

Finish: RAL 7035 structure powder coating.

Delivery: Enclosure with panel, and one panel mounting profile. Plastic double-bit 3mm key, and mounting accessories. Earthing facilities.



Wall Mounting Enclosures

MAP, IP 66 / NEMA 4, 12, 13 IK 10

With mounting plate

Enclosure dimension			Mounting plate dimension			Gland plate openings				Part No.
H	W	D	h	w	d	Size	Type	Openings	N° of locks	
300	600	300	270	550	282	510x96	4	1 + 1	2	MAP0306030R5
	800	300	270	750	282	310x96	2	2 + 2	2	MAP0308030R5
	1000	300	270	950	282	410x96	3	2 + 2	2	MAP0310030R5
	1200	300	270	1150	282	510x96	4	2 + 2	2	MAP0312030R5

Without mounting plate

Enclosure dimension			Gland plate openings				Part No.
H	W	D	Size	Type	Openings	N° of locks	
300	600	300	510x96	4	1 + 1	2	MAP0306030PER5
	800	300	310x96	2	2 + 2	2	MAP0308030PER5
	1000	300	410x96	3	2 + 2	2	MAP0310030PER5
	1200	300	510x96	4	2 + 2	2	MAP0312030PER5

Dimensions

