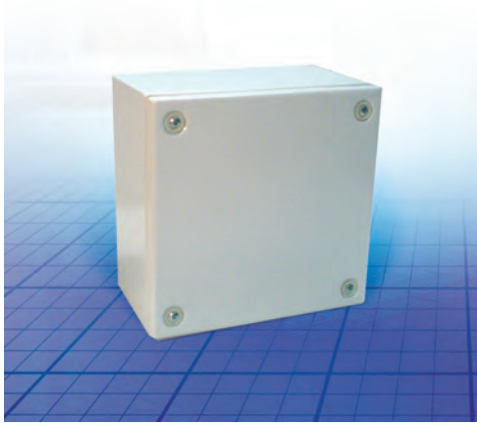


Mild steel

STB, Steel terminal box



Material: 1.2mm mild steel.

Body: Folded and seam welded. Four 8.5mm diameter holes for wall fixing. Four M6x13 studs for Bottom Profiles/Mounting plate .

Gasket: Sealing is ensured by an injected one piece polyurethane gasket.

Earthing: Earthing studs M8x12mm in body and cover, M8 nuts, earth washers, and earth labels.

Protection: Complies with IP 66, IK 10.

Finish: RAL 7035, structure powder coating.

Approvals: CE, KEMA, cUL, UL.

Delivery: Base, cover, cover screws, fixing screws, cover plugs, and earthing facilities.

H	W	D	Weight	Part No.	
150	150	80	1,24	STB151508	
		120	1,46	STB151512	
		300	80	2,23	STB153008
200	200	120	2,56	STB153012	
		80	2,00	STB202008	
		120	2,30	STB202012	
300	300	80	2,82	STB203008	
		120	3,19	STB203012	
		400	80	3,67	STB204008
400	400	120	4,09	STB204012	
		500	120	4,98	STB205012
		600	120	6,02	STB206012
300	300	800	120	7,86	STB208012
		80	4,09	STB303008	
		120	4,54	STB303012	
400	400	120	5,79	STB304012	
		500	120	7,04	STB305012
		600	120	8,42	STB306012
400	400	120	7,49	STB404012	
		600	120	10,82	STB406012
		800	120	14,07	STB408012

BPP, Bottom profile



Description: Bottom profile for DIN rail mounting.

Material: Galvanized steel.

Pack quantity: 2 pieces.

W	Part No.
150	BPP15
200	BPP20
300	BPP30
400	BPP40
500	BPP50
600	BPP60
800	BPP80

BMP, Mounting plate

Description: Steel mounting plate for terminal boxes.

Material: 2mm galvanized steel.

Pack quantity: 1 piece.

Enclosure dimension		Mounting plate		Part No.	
H	W	h	w		
150	150	125	120	BMP1515	
		300	270	BMP1530	
		200	200	170	170
200	200	300	270	BMP2030	
		400	170	370	BMP2040
		500	170	470	BMP2050
300	300	600	170	570	BMP2060
		800	170	770	BMP2080
		300	300	275	270
400	400	400	275	370	BMP3040
		500	275	470	BMP3050
		600	275	570	BMP3060
400	400	400	380	370	BMP4040
		600	380	570	BMP4060
		800	380	770	BMP4080