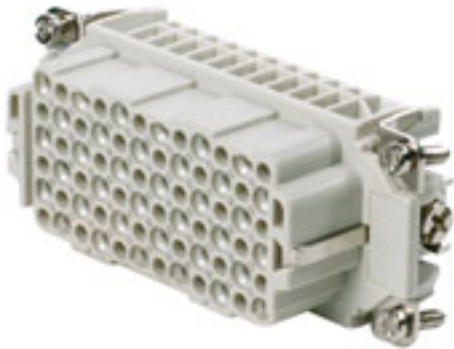


HDC insert HDC HDD 72 FC

Weidmüller Interface GmbH & Co. KG
 Klingenbergstraße 16
 D-32758 Detmold
 Germany
 Fon: +49 5231 14-0
 Fax: +49 5231 14-292083
 www.weidmueller.com



The HDD series with machined crimp contacts is designed for high pole counts in tight spaces. Users save installation space with the smaller design, without having to limit the number of poles.

The wire connection level is designed as a crimp contact. The established crimp connection has been used as a standard for decades. Crimp contacts are not delivered with the inserts.

Number of poles: **72**

Rated current: **10 A**

Rated voltage: **250 V**

Nominal voltage acc. to UL/CSA: **600 V AC/DC**

Crimp connection

General ordering data

Type	HDC HDD 72 FC
Order No.	165120000
Version	HDC insert, Female, 250 V, 10 A, No. of poles: 72, Crimp connection, Size: 6
GTIN (EAN)	4008190299804
Qty.	1 pc(s).

**HDC insert
HDC HDD 72 FC**

Weidmüller Interface GmbH & Co. KG
 Klingenbergstraße 16
 D-32758 Detmold
 Germany
 Fon: +49 5231 14-0
 Fax: +49 5231 14-292083
 www.weidmueller.com

Technical data**Dimensions and weights**

Length	84.5 mm	Width	34 mm
Height	33 mm	Net weight	57 g

Dimensions

Height of socket	33 mm	Total length base	84.5 mm
------------------	-------	-------------------	---------

General data

Size	6	Series	HDD
Rated voltage (DIN EN 61984)	250 V	Rated voltage according to UL/CSA	600 V AC/DC
Rated impulse voltage (DIN EN 61984)	4 kV	Rated current (DIN EN 61984)	10 A
UL 94 flammability rating	V-0	Insulating material group	IIIa
Insulation resistance	10 ¹⁰ Ω	Insulating material	PC glass-fibre reinforced (UL-listed and railway-certified)
Conductor cross-section	2.5 mm ²	No. of poles	72
Plugging cycles, silver	≥ 500	Plugging cycles, gold	≥ 500
Pollution severity	3	Type	Female

Connection data PE

Stripping length PE connection	10 mm	Wire connection cross-section, finely stranded, min.	0.5 mm ²
Wire connection cross section, finely stranded, max.	2.5 mm ²	Cross-section for connected conductor, finely stranded with wire-end ferrules and plastic collars DIN 46228/4, rated connection, min.	0.5 mm ²
Wire connection cross-section, finely stranded with wire-end ferrules and plastic collars DIN 46228/4, rated connection, max.	2.5 mm ²	Wire connection cross section AWG, min.	AWG 26
Wire connection cross section AWG, max.	AWG 14	Wire cross-section, solid, min.	0.5 mm ²
Wire cross-section, solid, max.	2.5 mm ²	Connection type PE	Screw connection
Tightening torque, min. PE connection	1.2 Nm	Tightening torque, max. PE connection	1.5 Nm
Rated cross-section	2.5 mm ²	Fixing screw	M 4
Blade size, crosshead	size PZ1	Blade size, slotted (PE connection)	SD 0.6 x 3.5, SD 0.8 x 4.0

Rating data

Rated current (DIN EN 61984)	10 A	Rated impulse voltage (DIN EN 61984)	4 kV
Rated voltage (DIN EN 61984)	250 V	Rated voltage according to UL/CSA	600 V AC/DC

Version

Wire connection cross section AWG, min.	AWG 26	Wire connection cross section AWG, max.	AWG 14
Stripping length, rated connection	8 mm	Type of connection	Crimp connection
Size	6	Volume resistance	≤ 4mΩ
Surface finish	Silver passivated, gold	Material	Copper alloy

**HDC insert
HDC HDD 72 FC**

Weidmüller Interface GmbH & Co. KG
 Klingenbergstraße 16
 D-32758 Detmold
 Germany
 Fon: +49 5231 14-0
 Fax: +49 5231 14-292083
 www.weidmueller.com

Technical data

Classifications

ETIM 2.0	EC001121	ETIM 3.0	EC001121
UNSPSC	30-21-18-01	eClass 4.1	27-14-08-05
eClass 5.1	27-14-34-19	eClass 6.2	27-26-12-04
eClass 7.1	27-44-02-05		

Product information

Descriptive text ordering data	When using connectors with high contact density, we recommend the use of guide pins and sockets; see Chapter J
Descriptive text accessories	Accessories, see chapter J - Tools, see chapter K
Description of article	Assignment 1-72
Product description	Assignment 1-72

Approvals

Approvals



ROHS	Conform
------	---------