

CS30 - CHANNEL SPRING NUT

Description :

CS30 - M10 Long Spring Nut

Finish :

Bright Zinc Plated - Also available in Hot Dip Galvanised (GA) and Stainless Steel (SS)

Material :

Steel

Packaging :

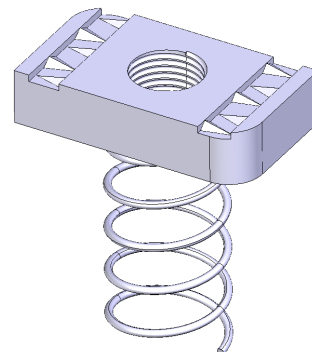
Packed in qty 100

Additional Notes :

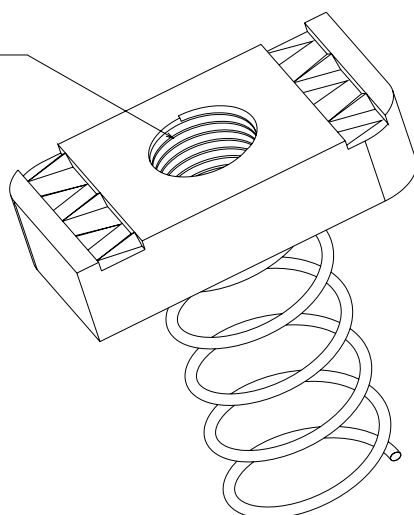
For use with 41mm Depth Channel

Produced to comply with the requirements of BS6946 Metal Channel Support Systems

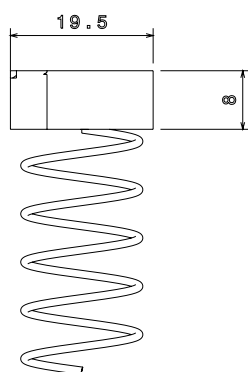
Compliant To LU Standard 1-085 (For Use On Surface & Sub-Surface Locations)



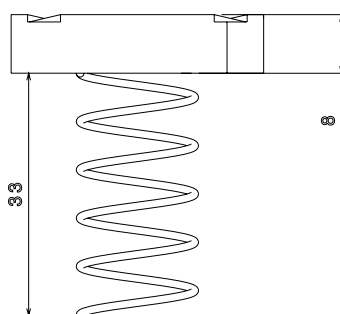
M10 Thread



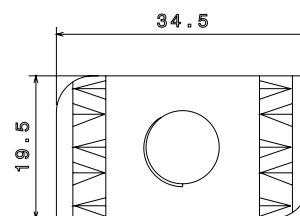
Isometric view



Front view



Side view



Top view

All Dimensions in mm (unless otherwise stated)

© Metpro Ltd 2015 - This Document is provided for Information Purposes Only and is Subject to Change Without Notice. Metpro Ltd makes No Warranty, express or implied, with this Document or the Information contained within.

Tel : 0121 552 2100 - Fax : 0121 552 3363 - Email : sales@metpro.co.uk