

RadiaLED® Utility

JC23401WOP

LED Bulkhead

Light source: Integral LED
Total circuit Wattage: 12W
Lumens: 700 Lumens
Efficacy: 58 LpcW
Colour temp: 4000K
Ra: 80

JC23401WPR

LED Bulkhead

Light source: Integral LED
Total circuit Wattage: 12W
Lumens: 1150 Lumens
Efficacy: 96 LpcW
Colour temp: 4000K
Ra: 80

JC23402WOP

LED Bulkhead

Light source: Integral LED
Total circuit Wattage: 21W
Lumens: 1350 Lumens
Efficacy: 64 LpcW
Colour temp: 4000K
Ra: 80

JC23402WPR

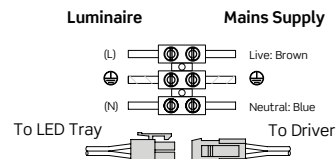
LED Bulkhead

Light source: Integral LED
Total circuit Wattage: 21W
Lumens: 2000 Lumens
Efficacy: 95 LpcW
Colour temp: 4000K
Ra: 80

220-240V~ 50/60Hz / Class I

Class I products must always be earthed

Fig. 1



CE **RoHS** **Compliant** **IP65**

BS EN ISO9001 - 2008

Registered Firm Certificate No. GB 1552
Drg No. JC23401WOP-IS Issue: A - 27.10.16 - KB

Installation Sheet

Please read these instructions before installation and retain for future reference

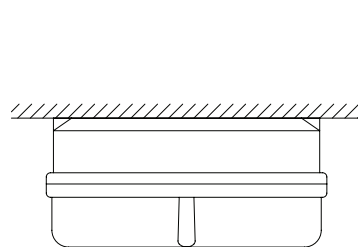
Important Information

It is recommended that luminaires are installed and fitted by a qualified electrician ensuring the installation complies with current IEE wiring regulations BS7671:2008 & local building control. These products are designed for connection to a 220-240V 50/60Hz supply. Any broken or damaged parts should be replaced as soon as possible. JCC will not accept responsibility for any claims arising from a poor installation. **The light source of this luminaire is not replaceable : when the light source reaches its end of life, the whole of the luminaire shall be replaced.**

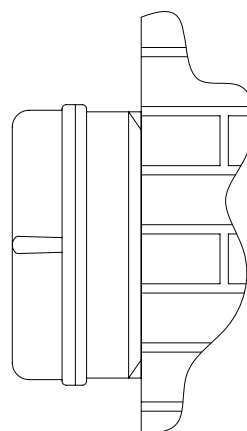
Installation

Ensure the fixing surface is flat and even. Use adequate fixings with regard to type of surface. Avoid installing in areas near continual running water. It may be necessary to uprate your MCBs to allow for increased inrush current. Check you have all the tools and accessories required to complete the installation correctly. Isolate the power before starting the installation.

1. Remove diffuser from luminaire by loosening the three securing screws.
2. All termination points are under the LED tray and this can be removed by loosening the locating screws and rotating the tray until keyhole slots allow removal.
3. Ensure incoming cables are weather protected.
4. Pass intended supply wires through grommet or CTS gland.
5. Fix base in desired location, taking care to avoid pipes and cables that may be hidden.
6. Make connections as per (Fig.1)
7. Re-attach LED tray to mounts and tighten screws.
8. Replace diffuser and tighten screws evenly.
9. Switch on mains.



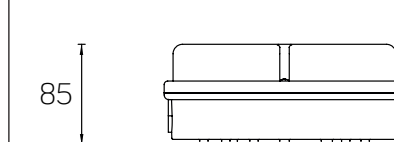
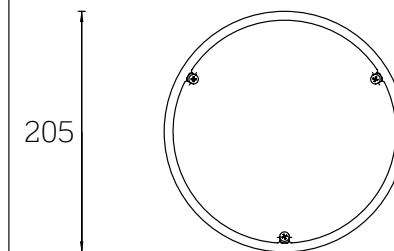
Ceiling applications



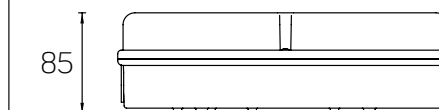
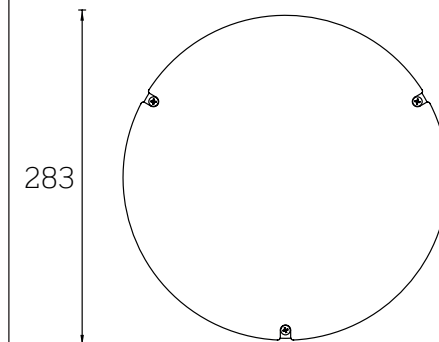
Wall applications

Profile & Dimensions

JC23401



JC23402



All dimensions in millimetres

jcc.co.uk