

## RadiaLED® Utility

### JC23431WOP

LED Bulkhead

Light source: Integral LED  
Total circuit Wattage: 12W  
Lumens: 700 Lumens  
Efficacy: 58 LpcW  
Colour temp: 4000K  
Ra: 80

### JC23431WPR

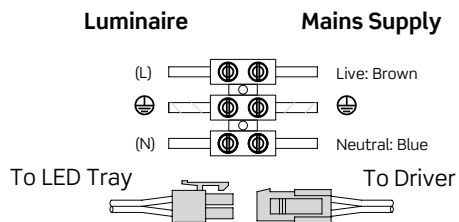
LED Bulkhead

Light source: Integral LED  
Total circuit Wattage: 12W  
Lumens: 1150 Lumens  
Efficacy: 96 LpcW  
Colour temp: 4000K  
Ra: 80

Finish: White  
Diffuser: Opal (WOP) or Prismatic (WPR)

220-240V~ 50/60Hz / Class I

Class I products must always be earthed  
Fig. 1



CE RoHS Compliant 0.3m IP65

BS EN ISO9001 - 2008  
Registered Firm Certificate No. GB 1552  
Drg No. JC23431-IS Issue: A - 20.01.17 - KB

## Installation Sheet

Please read these instructions before installation and retain for future reference

### Important Information

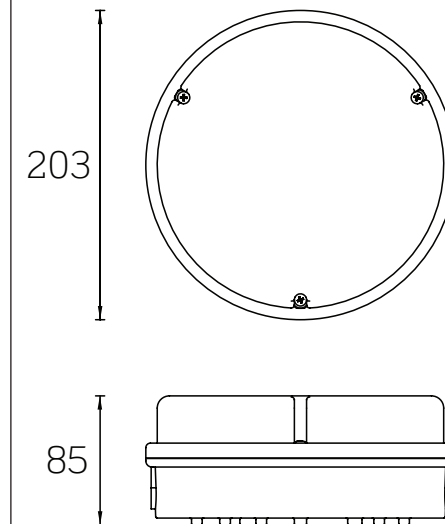
It is recommended that luminaires are installed and fitted by a qualified electrician ensuring the installation complies with current IEE wiring regulations BS7671:2008 & local building control. These products are designed for connection to a 220-240V 50/60Hz supply. Any broken or damaged parts should be replaced as soon as possible. JCC will not accept responsibility for any claims arising from a poor installation. **The light source of this luminaire is not replaceable : when the light source reaches its end of life, the whole of the luminaire shall be replaced.**

### Installation

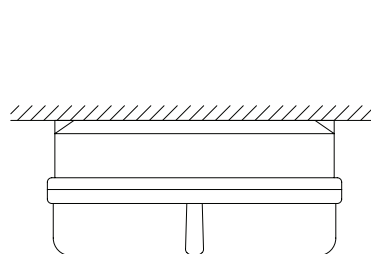
Check you have all the tools and accessories required to complete the installation correctly. Isolate the power before starting the installation.

1. Isolate supply voltage before working with electrics.
2. Remove diffuser from luminaire by loosening the three securing screws.
3. All termination points are under the LED tray and this can be removed by loosening the locating screws and rotating the tray until keyhole slots allow removal.
4. Ensure incoming cables are weather protected.
5. Pass intended supply wires through grommet or CTS gland.
6. Fix base in desired location, taking care to avoid pipes and cables that may be hidden.
7. Make connections as per (Fig.1)
8. Re-attach LED tray to mounts and tighten screws.
9. Replace diffuser and tighten screws evenly.
10. Switch on mains.

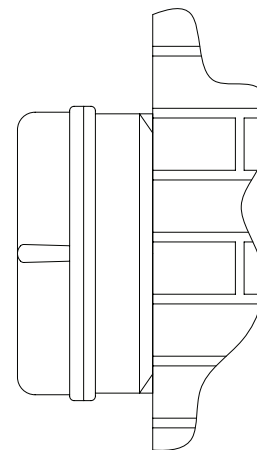
## Profile & Dimensions



All dimensions in millimetres



Ceiling applications ✓



Wall applications ✓

**jcc.co.uk**