

RadiaLED® Utility Emergency

JC23401EMWOP

LED Bulkhead

Light source: Integral LED
Total circuit Wattage: 12W
Lumens: 700 Lumens
Efficacy: 58 LpcW
Colour temp: 4000K
Ra: 80

JC23401EMWPR

LED Bulkhead

Light source: Integral LED
Total circuit Wattage: 12W
Lumens: 1150 Lumens
Efficacy: 96 LpcW
Colour temp: 4000K
Ra: 80

JC23402EMWOP

LED Bulkhead

Light source: Integral LED
Total circuit Wattage: 21W
Lumens: 1350 Lumens
Efficacy: 64 LpcW
Colour temp: 4000K
Ra: 80

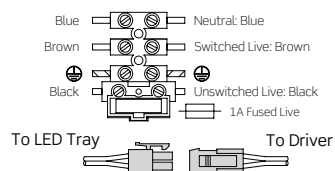
JC23402EMWPR

LED Bulkhead

Light source: Integral LED
Total circuit Wattage: 21W
Lumens: 2000 Lumens
Efficacy: 95 LpcW
Colour temp: 4000K
Ra: 80

240V~ 50Hz / Class I

Fig. 1 Luminaire Mains Supply



BS EN ISO9001 - 2008

Registered Firm Certificate No. GB 1552

Drg No. JC23401EMWOP-IS Issue: B - 07.11.16 - KB

Installation Sheet

Please read these instructions before installation and retain for future reference

Important Information

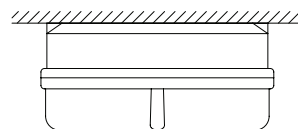
It is recommended that luminaires are installed and fitted by a qualified electrician ensuring the installation complies with current IEE wiring regulations BS7671:2008 & local building control. These products are designed for connection to a 240V 50Hz supply. Any broken or damaged parts should be replaced as soon as possible. JCC will not accept responsibility for any claims arising from a poor installation. **The light source of this luminaire is not replaceable : when the light source reaches its end of life, the whole of the luminaire shall be replaced.**

Warning! This fitting remains live after mains supply is cut. Disconnect fitting prior to high voltage circuit testing (DO NOT circuit test this fitting using a Megger). Light fittings that are intended for continuous running must not be subjected to over voltaging (240V +10-6% is nominal operating range) and the room ambient temperature should not exceed 25°C. As supplied (or when replaced) the cells require between 10 to 15 minutes of charging before the relay will engage and the LED will illuminate in emergency mode. Once installed and running in emergency mode the built in Deep Discharge Protection (DDP) facility will prevent the cells' power from falling below their operational level. A full 48hr charge is required before any testing is carried out. Note! It is the responsibility of the installer to ensure that the product is fitted correctly and is left in operational condition at all times. Emergency luminaires should be routinely tested in accordance with current BS 5266 guidelines. All internal modules are manufactured to BS EN 60 924 / 925 and are designed to meet ICEL guidelines. Isolate power prior to any maintenance or servicing

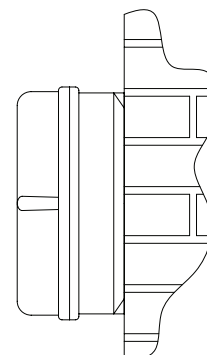
Installation

Ensure the fixing surface is flat and even. Use adequate fixings with regard to type of surface. Avoid installing in areas near continual running water. It may be necessary to uprate your MCBs to allow for increased inrush current. Check you have all the tools and accessories required to complete the installation correctly. Isolate the power before starting the installation.

1. Remove diffuser from luminaire by loosening the three securing screws.
2. All termination points are under the LED tray and this can be removed by loosening the locating screws and rotating the tray until keyhole slots allow removal.
3. Ensure incoming cables are weather protected.
4. Pass intended supply wires through grommet or CTS gland.
5. Fix base in desired location, taking care to avoid pipes and cables that may be hidden.
6. Make connections as per (Fig.1)
7. Re-attach LED tray to mounts and tighten screws.
8. Replace diffuser and tighten screws evenly.
9. Switch on mains.



Ceiling applications

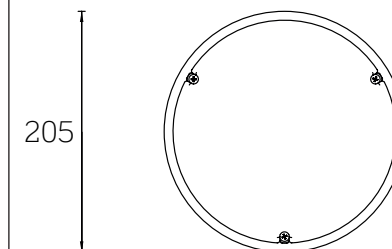


Wall applications

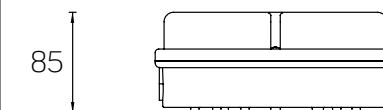


Profile & Dimensions

JC23401EM

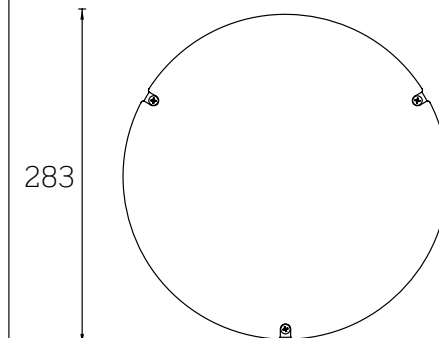


205

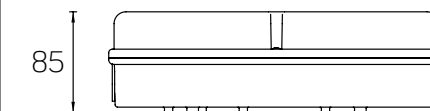


85

JC23402EM



283



85

All dimensions in millimetres

jcc.co.uk