

# DORBIK



CASE STUDY  
THE BODMIN JAIL HOTEL

# ABOUT ORBIK

## OVER 40 YEARS OF EXCELLENCE



Established in 1982, OrbiK quickly developed into a highly respected manufacturer of lighting and safety products, all made to the most exacting standards.

OrbiK are a go-to supplier to a large customer base across the UK, Europe and the Middle East and have won many prestigious projects within these markets over the years.

OrbiK's purpose-built four acre facility in Aldridge in the West Midlands features state-of-the-art in-house production, including precision metal engineering and powder coating facilities.

Throughout their distinguished history, OrbiK have consistently maintained their dedication to excellence, which has seen the company being awarded a significant amount of quality certificates from the likes of BSI and TUV Rheinland.

OrbiK manufacture within quality system ISO 9001:2015 and together with a 100% test policy, our products provide our valued customers with the peace-of-mind that the product they are purchasing is not only fit for purpose but also made with the utmost care and attention to detail.

We are rightfully proud of the reputation that we have earned Worldwide as a supplier of high quality products and services and we have enthusiastically supported the improvement of quality standards within the lighting industry during our 41 year history.



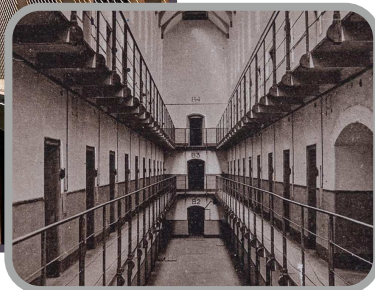
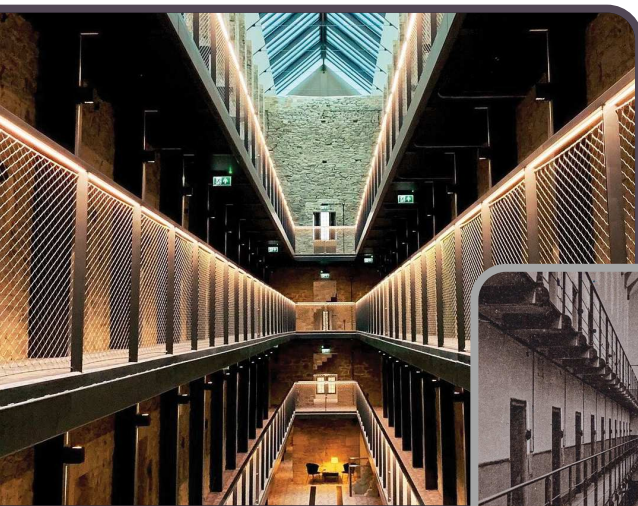
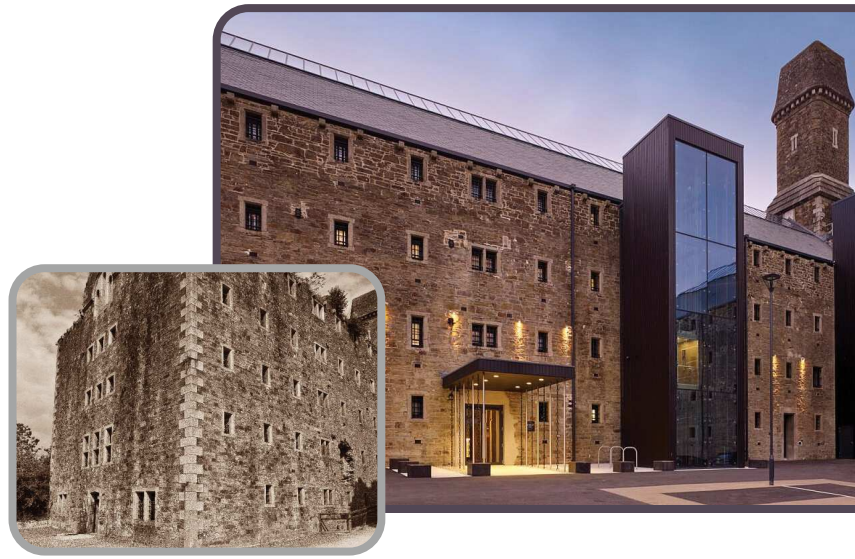
# HISTORY

## THE BODMIN JAIL HOTEL

Situated on the edge of Bodmin Moor, Bodmin Jail was a milestone in prison design; with individual cells, segregated male and female areas and hot water. At the time, Bodmin Jail formed the new ideal for prisons throughout the United Kingdom.

Bodmin Jail was built by military engineer Sir John Call in 1779. Building works began in the early 1770s with the construction being carried out by Napoleonic prisoners of war using 20,000 tonnes of granite quarried from Bodmin Moor.

Between 1887 and 1922, the Royal Navy occupied an entire wing of the jail and after the last civilian prisoners left in 1923, it was used to house the Crown Jewels during World War I.



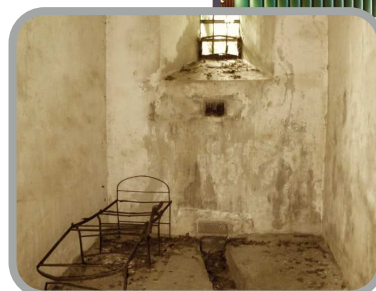
As with most old prisons, Bodmin Jail envelopes a dark history within its formidable walls. In total the prison sanctioned 55 executions for crimes of varying degrees of severity. Most of these executions were viewed by the public and thousands of people would travel specifically to witness the hangings.

The last person taken to the gallows was William Hampton in 1909. He was the last man to be hung in Cornwall.

After thousands of people had passed through its doors, the jail was finally closed in 1927 with any remaining inmates being transferred to Plymouth prison.

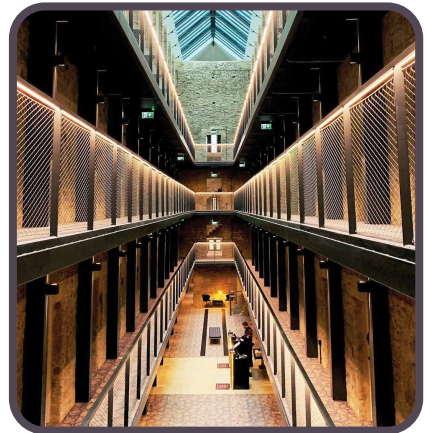
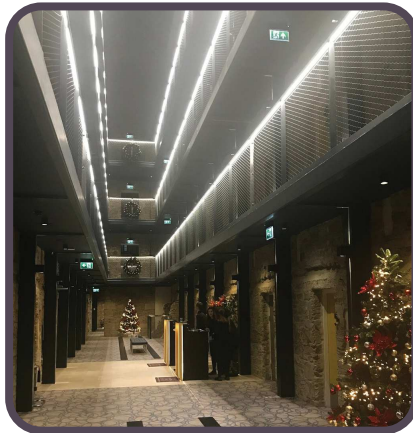
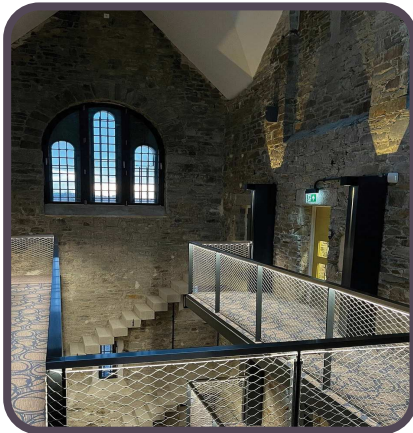
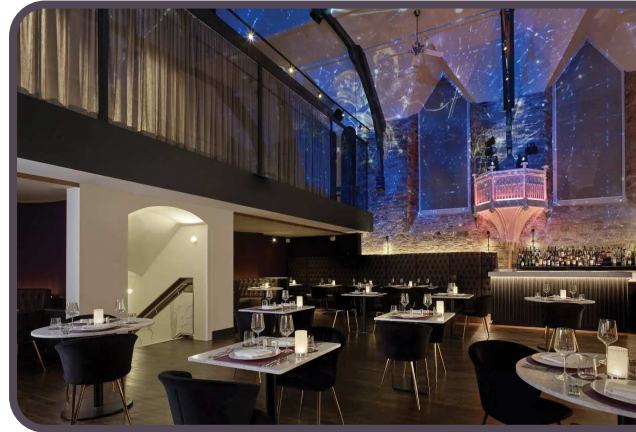
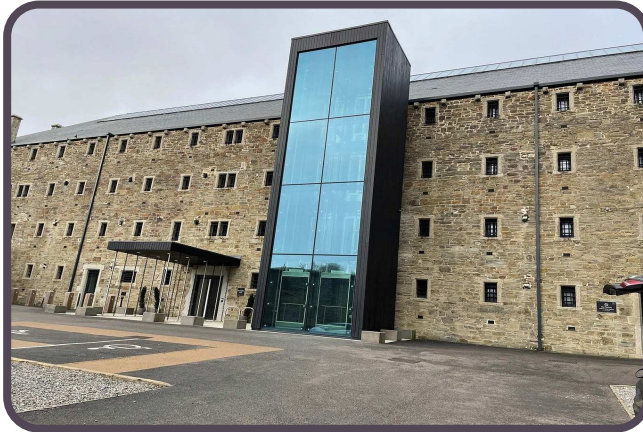
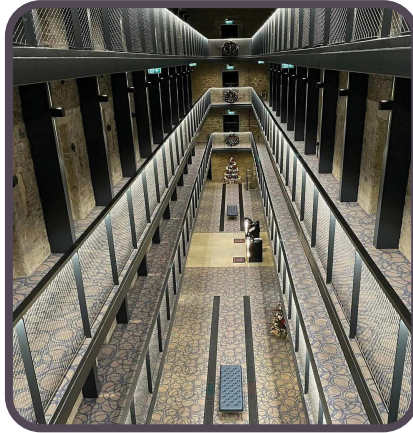
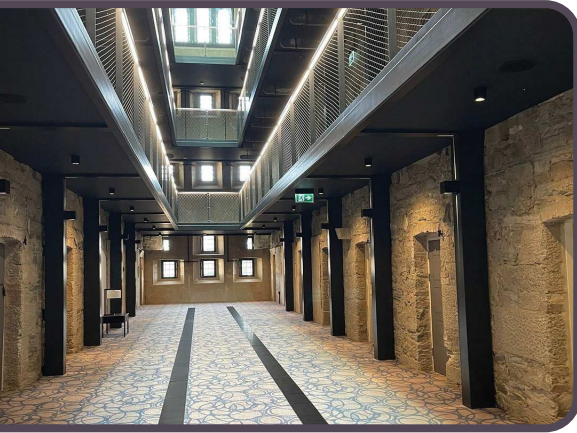
Now nearly 100 years later, new life has been injected into this historic landmark. There is no longer an old dilapidated and derelict building to be seen. Instead you will find a creative and contemporary design that binds the past and present together quite beautifully.

The jail is now ready to create new stories and Orbik are extremely proud to be a part of this magnificent restoration.



# INSTALLATION

THE BODMIN JAIL HOTEL, BODMIN, CORNWALL, UK



# ROMNEY

## THE PRODUCT USED ON THIS PROJECT



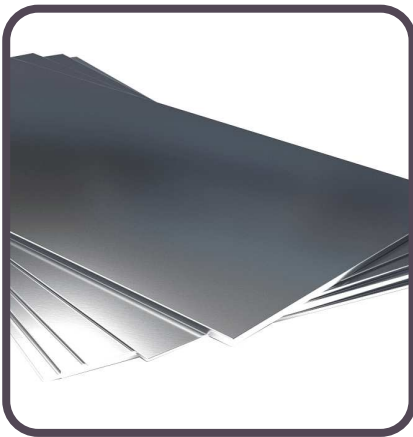
### ROM/LED/M3/M/BK

Ceiling mounted IP20 7.5W LED steel exit sign with black finish and supplied complete with a flame-retardant EN7010 format edge-lit plasi-glas legend panel.

Dimensions: Length 310mm x Width 242mm x Depth 45mm

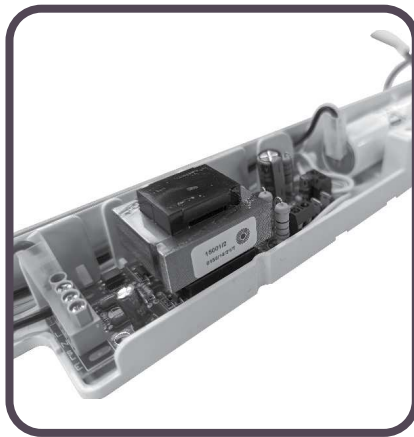
Weight: 1.60Kg

Viewing Distance: 27m



### CONSTRUCTION

- Sheet steel enclosure.
- Black powder coated finish.
- Edge-lit plasi-glas legend panel.
- IP20 protection degree.
- Class 1 insulation class.
- Manufactured to BS EN60598-2-22.
- Quality approval ISO 9001: 2015.
- Manufactured in the United Kingdom.
- CE marked, REACH and RoHS compliant.



### CONTROL GEAR/BATTERY

- Input Voltage 230/240V AC 50/60Hz.
- Constant current output emergency LED drivers.
- V-Out 3V / I-Out 300mA.
- 90°C single core 0.8mm cabling to BS6500 Grade 5.
- 3 x 1.5Ah Nickel Cadmium battery.
- Designed and manufactured in accordance with BS EN61347-2-7, BS EN61347-2-13, BS EN62384, BS EN61000-3-2 & BS EN61000-3-3.



### LEDs

- 2835 SMT mid-power LEDs.
- 0.5W 150 lumens/Watt.
- 6500K colour temperature.
- 3 step MacAdan rated.
- CRI 80 (minimum).
- LED lifetime greater than 54,000 hours.
- LED manufacturers vary between Seoul semiconductor / Plessey / CREE or equivalent.



#### **HEAD OFFICE & EXPORT SALES**

**Orbik Electronics Limited  
Orbik House, Northgate Way  
Aldridge, Walsall  
West Midlands, WS9 8TX  
United Kingdom**

**TEL: +44 (0) 1922 743154 FAX: +44 (0) 1922 743173  
EMAIL: [sales@orbik.co.uk](mailto:sales@orbik.co.uk)  
EXPORT EMAIL: [export@orbik.co.uk](mailto:export@orbik.co.uk)**

#### **UK ELECTRICAL WHOLESALERS**

**Orbik Electronics Limited  
Orbik House, Northgate Way  
Aldridge, Walsall  
West Midlands, WS9 8TX  
United Kingdom**

**TEL: 01922 745024 FAX: 01922 745124  
EMAIL: [uksales@orbik.co.uk](mailto:uksales@orbik.co.uk)**

**[www.orbik.co.uk](http://www.orbik.co.uk)**

