

CASE STUDY

**Hazel Court,
Sketty Park,
Swansea, UK**



TIME SAVINGS
170 HOURS

WORKING WEEKS SAVED*
4 WEEKS

LABOUR SAVED
£3,400

Hazel Court is a purpose-built, extra care housing scheme in the Sketty area of Swansea that provides affordable apartments for people aged 55 and over. To support the development of this project, Gripplle supplied [Trapeze Plus FR](#), [Universal Brackets & QT Universal Clamps](#) for the suspension of pipework and electrical containment.

Project Summary

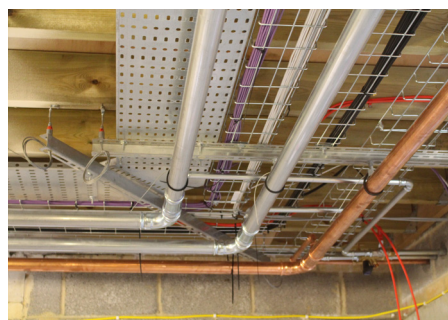
Building type	Residential
Main Contractor	Kier
Sub Contractor	JW Morris
Services	Pipework & Electrical Containment

Featured Products

Trapeze Plus FR



Universal Bracket
QT Universal Clamp



"The service and products offered by Gripplle were excellent. Easy and quick to install - this was a key driver supporting our decision to use Gripplle as we were delayed access to the build and we needed to ensure we did not fall behind schedule. The products we used allowed us to save time and have less guys on the job."

- Site Supervisor, JW Morris -

COST SAVING SUMMARY

	Gripplle solution	Traditional method
Overview	Trapeze Plus FR, Universal Bracket & QT Universal Clamp	Channel, threaded rod, pipe rings & channel nuts
Material cost	£6,106	£4,127
Installation time	192 hours	362 hours
Labour rate (per hour)	£20	£20
Total labour cost	£3,840	£7,240
Total cost	£9,946	£11,367

*Figure based on one installer working for eight hours a day

WWW.GRIPPLE.COM

CASE STUDY

Hazel Court,
Sketty Park,
Swansea, UK



PROJECT DETAILS

Hazel Court comprises of 120 spacious apartments, an on-site gym, a hair salon and a restaurant. The new extension allowed the further build of 43 new apartments.

JW Morris were appointed as the subcontractors responsible for completing the pipework and electrical containment for the site. They had used Gripplle products previously and opted to use QT Universal Clamps alongside the Universal Brackets on this project. By using Gripplle's products JW Morris was able to save significant amounts of time on the project while also freeing up storage space as Gripplle products take up much less space than traditional methods such as rod and channel which weigh considerably more.

The Universal Bracket maximised efficiency in the small ceiling void as brackets were used for both M&E services. The bracket allowed versatility for JW Morris as it could be bolted directly to the soffit or wall, or suspended using Gripplle Hangers. The Universal Bracket also arrived to site in pre-cut lengths,

eliminating the need for cutting rod and channel on-site which drastically improves health and safety on site. The installation of all pipework on this project took less time to complete as a result of JW Morris using QT Universal Clamps in conjunction with Gripplle Universal Brackets. The QT Universal Clamp is ten times faster to install than traditional methods, with a quarter turn fixing allowing tool free adjustment and attachment. The QT Universal Clamp replaces more than 12 different pipe ring sizes.

During the project, JW Morris were delayed access to the build due to the speed of installation on other building applications. To ensure the build did not fall behind schedule, JW Morris were able to recoup valuable time by installing cable baskets using Trapeze Plus FR, an efficient locking system with a practical mechanism which includes an adjustment button that allows the installer to perfectly level the system on site. The secure locking screw prevents any movement of building services once they are positioned which further enhances safety on site.

