

NEBO[®]



**SHAPING LIGHT
LIKE NEVER BEFORE**

NEBO[®]
Innovative Lighting

iPROTEC[™]
Made Tough

NEBO[®]
Bright Ideas

NEBO®

WELCOME

Welcome to NEBO® one of the world's largest suppliers of technologically advanced LED lighting products.

In the last year, NEBO® sold over 4 million flashlights to Outdoor fanatics, Camping enthusiasts, Car owners and Home owners. Our flashlights are sold through both mass retailers like Walmart, Dicks Sporting Goods, Bass Pro Shop, Academy Sports, and through more than 30,000 independent retailers right across the USA .

We bring unique cutting edge design and extreme brightness along with a variety of features, creating a value proposition most don't achieve without cutting specifications or compromising quality. Our products are designed to "light the way" toward a more enjoyable and effective product experience.

NEBO® is now available outside of the USA for the very first time!

NEBO® is a division of Alliance Sports Group (ASG), with headquarters in Grand Prairie, TX, USA. True Brands Ltd is a UK based wholly owned subsidiary of ASG, handling the global distribution and selling of NEBO® products throughout the World.

SOME OF OUR AMERICAN RETAILERS



NEBO®



NEBO® is one of the world's best-selling lines of innovative, consumer-friendly flashlights and tools. Ever-changing and never compromising, we create and see our products through every phase of development. From the conceptual drawings on the sketch pad all the way to the end consumer, we offer quality and customer service guarantees that are unmatched.

We are excited to introduce to you our latest line-up of new and innovative lighting products with counter top displays.

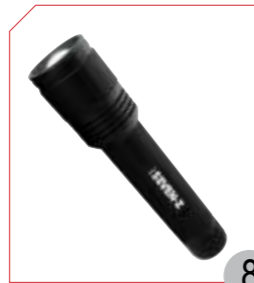
All of these high quality practical LED lighting products come complete with their own cleverly created point of sale displays, intended to sit directly on the countertop, near the till point - taking up as little space as possible and offering a unique and impulsive 'TRY & BUY' shopping experience.

The displays are designed to help you to sell as much stock as possible by encouraging your customers to interact, discover, and be impressed by the quality and brightness of these innovative and exciting NEBO lighting products.



6

TWYST
SHAPING LIGHT LIKE NEVER BEFORE



8

SEVEN-Z



10

BIG Larry
POWER WORK LIGHT



12

WORKBRITE



14

THE RECHARGEABLE
WORKBRITE



16

SLYDE



18

SLYDE



20

Larry



22

TRANSPORT



23

LUMO



24

MICRO
REDLINE



25

REDLINE

Bright Ideas 'language free' euro-hook packaging is presented in a fresh and eye catching striking green and white colourway standing out from the competition. The packs clearly show the product features through the use of internationally recognisable icons, enabling them to be sold Worldwide.

All Bright Ideas product packs include a "TRY ME" feature to encourage your customers to interact, discover, and be impressed by the quality and brightness of these innovative and exciting NEBO lighting products.

Also, you will find a spare set of Duracells with products that need batteries to ensure your customers always have a fresh set.

The Bright Ideas range of innovative lighting products are well suited for retailers that sell from display hooks. Ideal for selling throughout the Outdoor, Camping, Travel, Auto, Garden, Home and Gift sectors.

TWYST™	26
BIG Larry™	28
Larry™2	29
WORKBRITE™	30
Rechargeable WORKBRITE 2™	31
PAL	32
SLYDE™	33
CLIPLITE	34
LUMO™	35



iPROTEC™

MADE TOUGH

iPROTEC flashlights are practical, enjoyable to own, and far exceed expectations relative to their price. They are "MADE TOUGH", ensuring each of our flashlights are rugged and highly dependable whilst also being compact and easy to pack away. iPROTEC flashlights have lumen outputs that are equal to those of much more expensive products.

PRODUALLIGHT SLYDE™	36
CHAMELEON™	37
PRO150LIGHT HEADLAMP	37
PRO180LIGHT	38
PRO280LIGHT	38
PRO220LIGHT	39
PRO100LIGHT	39

MADE TOUGH



NEBO® TWYST™

SHAPING LIGHT LIKE NEVER BEFORE



WORK LIGHT, LANTERN & FLASHLIGHT

A light that does it all...with a TWYST™! The TWYST™ features a high-power work light, lantern and flashlight all in one! The TWYST™ uses a revolutionary new C•O•B LED technology that allows the shaping of light into full 3D patterns, giving optimal, bright, uniform light exactly where it's needed. Retractable base stabilisers are positioned at the bottom of the flashlight to give added stability on uneven surfaces. A powerful magnetic base also provides convenient hands-free lighting. TWYST™...shaping light like never before!

LIGHT

- 110 Lumen Work Light
- 250 Lumen Lantern
- 270 Lumen LED Flashlight

DESIGN

- Enhanced C•O•B LED Technology
- Fully dimmable beam
- Anodised aircraft-grade aluminum
- Water and impact-resistant
- Retractable base stabilisers
- Powerful magnetic base

OPERATION

- Side-positioned ON/OFF button

BATTERIES

- Powered by 4 AA batteries (included)

SPECIFICATIONS

- Weight with batteries - 385g
- Length - 190 mm (Compacted) 200 mm (Extended)
- Diameter - 50 mm (Head) 31 mm (Barrel)

WORK LIGHT, LANTERN & FLASHLIGHT



270 LUM
LED Flashlight



TWYST™ BEZEL
Reveals C•O•B LED



ENHANCED C•O•B LED TECHNOLOGY

Our new, proprietary C•O•B LED technology allows the shaping of light into full 3D patterns, giving optimal, bright, uniform light exactly where it's needed. With TWYST™, the C•O•B LED provides a 120° beam pattern work light and a 360° beam pattern lantern from the same light source. To reveal the C•O•B LED, simply twist the bezel counter-clockwise.



ENHANCED
C•O•B Technology

TOP-POSITIONED
ON/OFF Button

POWERFUL
Magnetic Base

RETRACTABLE
Base Stabilisers

COUNTERTOP DISPLAY

Metal Display

- Each TWYST™ comes with its own gift tube and instruction manual
- Display holds 5 pieces: 1 'Try Me' and 4 in gift tubes 5 additional pieces are included as replenishments
- Display allows product to be easily tested by consumers

Display Dimensions

(H) 261 mm x (W) 234 mm x (D) 180 mm

Gift Tube Dimensions

(H) 203 mm x (W) 60 mm

TWO LIGHT MODES

WORK LIGHT - 120° Light Coverage		LANTERN - 360° Light Coverage		FLASHLIGHT	
HIGH:	LOW:	HIGH:	LOW:	HIGH:	LOW:
110 Lumens	10 Lumens	250 Lumens	25 Lumens	270 Lumens	25 Lumens
• 13.5 Hours	• 96 Hours	• 4 Hours	• 60 Hours	• 4 Hours	• 40 Hours
• 15 Meters	• 1.5 Meters	• 15 Meters	• 1.5 Meters	• 233 Meters	• 74 Meters



CODE	DESCRIPTION	Display Pack
NE6296	TWYST work Light, Lantern & Flashlight	10 Pieces

NEBO[®] SEVEN-Z™

770 LUMEN FLASHLIGHT

You asked; we delivered. The SEVEN-Z™ is the answer to the demands for a high-lumen flashlight...770 lumens to be exact! Featuring OC™ Technology and all-new, Flex-Power™ which allows the flashlight to be powered by 3, 6 or 9 AA batteries, depending on the user's preference.

LIGHT

- High-power 770 lumen LED flashlight

DESIGN

- Convex Lens
- Heat sink design
- 6x adjustable beam
- Anodised aircraft-grade aluminium
- Water and impact-resistant
- Flex-Power™

OPERATION

- Rear-positioned, glow-in-the-dark ON/OFF button

BATTERIES

- Powered by Flex-Power™:
- 3, 6 or 9 AA batteries (9 AA batteries included)

SPECIFICATIONS

- Weight with 9 batteries - 570g
- Weight with 6 batteries - 550g
- Weight with 3 batteries - 530g
- Length - 223 mm (Compacted) 244 mm (Extended)
- Diameter - 50 mm (Head) 38 mm (Barrel)

FLEX-POWER™

FLEX POWER™

The SEVEN-Z™ is fueled by FLEX-POWER™, technology that allows the flexibility to use different quantities of batteries to power the light. SEVEN-Z™ will function with 3 AA, 6 AA or with the optimal 9 AA batteries for full 770 lumens of power.

770 LUMEN
LED Flashlight

6x ADJUSTABLE ZOOM
From Spot to Flood



OPTIMISED CLARITY

Eliminating inconsistencies in light, the OC™ - Optimised Clarity Technology provides intense, clear, pristine light that is easy on the eyes. This technology allows the light beam to be as bright on the edge as it is in the center when used in flood mode.

FLEX-POWER™

Powered by 3, 6 or 9 AA Batteries

GLOW-IN-THE-DARK
Button

NEBO[®] SEVEN-Z™

COUNTERTOP DISPLAY

Display

- Each SEVEN-Z™ comes with a gift box.
- Gift box holds display card to double as display
- Allows product to be easily tested by consumers

Display Dimensions

(H) 244 mm x (W) 279 mm x (D) 95 mm

Gift Box Dimensions

(H) 60 mm x (W) 279 mm x (D) 95 mm

TWO LIGHT MODES

9 AA BATTERIES		6 AA BATTERIES		3 AA BATTERIES	
HIGH:	770 Lumens	HIGH:	700 Lumens	HIGH:	550 Lumens
• 7 Hours	• 322 Meters	• 4.5 Hours	• 307 Meters	• 2.5 Hours	• 273 Meters
LOW:	220 Lumens	LOW:	200 Lumens	LOW:	130 Lumens
• 25 Hours	• 160 Meters	• 23 Hours	• 152 Meters	• 13 Hours	• 136 Meters



CODE	DESCRIPTION	Display Pack
NE6294	SEVEN-Z™ 770 Lumen Flashlight	6 Pieces

NEBO
the **BIG Larry**
POWER WORK LIGHT

POWER C•O•B LED WORK LIGHT

The BIG Larry™ knows how to light up a room! Equipped with new C•O•B LED technology, the BIG Larry™ outputs 400 lumens of intense light. Secondary light modes include Low (160 lumens) and the Emergency Red Flash mode. This intense red light is perfect for distress signaling or roadside emergencies. The anodised aluminium body and recessed LED housing ensures that the BIG Larry™ can handle any situation.

LIGHT

- High-power 400 lumen C•O•B LED work light
- Low-power 160 lumen C•O•B LED work light
- High-power C•O•B LED emergency red flasher

DESIGN

- Anodised aircraft-grade aluminium
- Water and impact-resistant
- Powerful magnetic base

OPERATION

- Top-positioned, ON/OFF button

BATTERIES

- Powered by 3 AA batteries (included)

SPECIFICATIONS

- Weight with batteries - 204g
- Length - 188 mm
- Diameter - 28 mm (Head) 22 mm (Barrel)



C•O•B (Chips on Board)

A new innovation in LED technology. C•O•B features smaller, easier clustered LED chips that are mounted directly to the circuit board. These LED chips work together as one lighting module. Because of the compact design, C•O•B outperforms traditional lighting by up to 50 times the light output per centimeter of light surface.



POWERFUL
Magnetic Base



TOP-POSITIONED
ON/OFF Button



EMERGENCY
Red Flasher



AIRCRAFT-GRADE
Anodised Aluminium

NEBO
the **BIG Larry**
POWER WORK LIGHT
COUNTERTOP DISPLAY

Display

- Each BIG Larry™ comes with a gift box.
- Display holds 14 pieces; 2 in front for consumer testing, 12 additional pieces stored in the back as replenishments
- Product attaches securely to the display using the magnetic base

Display Dimensions

(H) 304 mm x (W) 139 mm x (D) 139 mm



THREE LIGHT MODES

HIGH:

- 400 Lumens
- 4.5 Hours
- 29 Meters

LOW:

- 160 Lumens
- 15 Hours
- 17 Meters

RED FLASH:

- 40 Hours



CODE	DESCRIPTION	Display Pack
NE6306	BIG Larry™ Power C•O•B LED Work Light	14 Pieces

NEBO®

WORKBRITE®

C-O-B LED WORK LIGHT

The WORKBRITE 2™ adapts to your work environment, making it the handiest of work lights. Equipped with a 200 lumen C-O-B LED work light, the WORKBRITE 2™ also features a 100 lumen flashlight and a rear, emergency red flasher LED. The WORKBRITE 2™ provides hands-free lighting in three different ways: a hanging hook, a 200° pivoting stand and a magnetic base. Whether you are under the hood, under the sink or just out in the dark, the WORKBRITE 2™ works great for any application. WORKBRITE 2™...It stands! It hooks! It sticks! It lights! It WORKS!

LIGHT

- High-power 100 lumen LED flashlight
- High-power 200 lumen C-O-B LED work light
- Emergency Red Flasher LED

DESIGN

- Water and impact-resistant
- Ergonomic, non-slip grip
- 200° pivoting magnetic stand
- Collapsible, hanging hook

OPERATION

- Front-positioned, ON/OFF button
- Emergency Red Flash is independently controlled; press light to activate

BATTERIES

- Powered by 3 AAA batteries (included)

SPECIFICATIONS

- Weight with batteries - 170g
- Length - 215 mm
- Diameter - 50 mm (Width) 38 mm (Depth)



NEBO®

WORKBRITE® COUNTERTOP DISPLAY

Display

- Each WORKBRITE 2™ comes with a gift box
- Featured product is secured to the display using the magnetic base; 6 additional products are stored in the back of the display as replenishments
- Display allows product to be easily tested by consumers

Display Dimensions

(H) 323 mm x (W) 139 mm x (D) 196 mm



THREE LIGHT MODES

- | | | |
|---|--|----------------------------------|
| WORK LIGHT:
200 Lumens
• 7 Hours
• 322 Meters | FLASHLIGHT:
100 Lumens
• 25 Hours
• 160 Meters | RED FLASH:
• 200 Hours |
|---|--|----------------------------------|



ENHANCED C-O-B LED TECHNOLOGY
Our new proprietary C-O-B LED technology allows the shaping of light into full 3D patterns, giving optimal, bright, uniform light exactly where it's needed.



CODE	DESCRIPTION	Display Pack
NE6304	WORKBRITE 2™ C-O-B LED Work Light	12 Pieces

NEBO®
THE RECHARGEABLE
WORKBRITE® 2™

RECHARGEABLE WORK LIGHT

Never worry about replacing batteries again with The Rechargeable WORKBRITE 2™. This work light is equipped with a 220 lumen C-O-B LED work light, a 120 lumen flashlight and a rear, emergency red flasher LED. The WORKBRITE 2™ provides hands-free lighting in three different ways: a hanging hook, a 200° pivoting stand and a magnetic base. Whether you are under the hood, under the sink or just out in the dark, the WORKBRITE 2™ works great for any application. WORKBRITE 2™...It stands! It hooks! It sticks! It lights! It recharges! It WORKS!

- LIGHT**
- High-power 120 lumen LED flashlight
 - High-power 220 lumen C-O-B LED work light
 - Emergency Red Flasher LED

- DESIGN**
- Fully rechargeable
 - Water and impact-resistant
 - Ergonomic, non-slip grip
 - 200° pivoting magnetic stand
 - Collapsible, hanging hook

- OPERATION**
- Front-positioned, ON/OFF button
 - Emergency Red Flash is independently controlled; press light to activate

- BATTERIES**
- Powered by 1 18650 Li-ion Rechargeable Battery

- SPECIFICATIONS**
- Weight with batteries - 195g
 - Length - 215 mm
 - Diameter - 50 mm (Width) 38 mm (Depth)



COLLAPSIBLE
Hanging Hook



EMERGENCY
Red Flasher



USB TO MICRO USB
Cable included



POWERFUL
Magnetic Base



120 LUMEN
Flashlight

200° PIVOTING
Stand

NEBO®
THE RECHARGEABLE
WORKBRITE® 2™
COUNTERTOP
DISPLAY

Display

- Each Rechargeable WORKBRITE 2™ comes with a gift box.
- Featured product is secured to the display using the magnetic base; 3 additional products can be stored in the back of the display as replenishments
- Display allows product to be easily tested by consumers

Display Dimensions
 (H) 323 mm x (W) 139 mm x (D) 196 mm



THREE LIGHT MODES

- | | | |
|---|--|----------------------------------|
| WORK LIGHT:
220 Lumens
• 7 Hours
• 322 Meters | FLASHLIGHT:
120 Lumens
• 25 Hours
• 160 Meters | RED FLASH:
• 200 Hours |
|---|--|----------------------------------|



ENHANCED C-O-B LED TECHNOLOGY
 Our new, proprietary C-O-B LED technology allows the shaping of light into full 3D patterns, giving optimal, bright, uniform light exactly where it's needed.



CODE	DESCRIPTION	Display Pack
NE6305	The Rechargeable WORKBRITE 2™	12 Pieces

NEBO SLYDE^Z

FLASHLIGHT & WORK LIGHT

The newest addition to the SLYDE™ family is the SLYDE™Z. Much like its predecessor, the Z features all of the 2-in-1 innovation as the original SLYDE™ with a few additions. What does "Z" mean?...ZOOM, the SLYDE™Z features a 4x adjustable zoom. The Z also has a fully dimmable function for the flashlight and work light as well as an Instant ON feature that automatically activates the C-O-B work light when opened.

LIGHT

- High-power 300 lumen LED flashlight
- High-power 250 lumen C-O-B work light

DESIGN

- Convex lens
- Tactical edge
- 4x adjustable zoom
- Anodised aircraft-grade aluminium; water and impact-resistant
- Dimmable beam
- Instant ON feature (work light)
- Work light is concealed inside the flashlight body; just SLYDE to reveal
- Powerful magnetic base

OPERATION

- Side-positioned ON/OFF button; hold to activate dimming
- C-O-B Work light turns ON when opened and OFF when closed

BATTERIES

- Powered by 4 AA batteries (included)

SPECIFICATIONS

- Weight with batteries - 511g
- Length - 196 mm (Compacted) 261 mm (Extended)
- Diameter - 52 mm (Head) 38 mm (Barrel)

TWO LIGHT MODES

FLASHLIGHT:

- 300 Lumens
- 2.5 Hours
- 276 Meters

WORK LIGHT:

- 250 Lumens
- 3.5 Hours
- 21 Meters

300 LUM
LED Flashlight

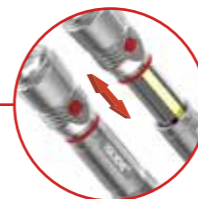


C-O-B (Chips on Board)

A new innovation in LED technology. C-O-B features smaller, easier clustered LED chips that are mounted directly to the circuit board. These LED chips work together as one lighting module. Because of the compact design, C-O-B outperforms traditional lighting by up to 50 times the light output per centimeter of light surface.

EXTENDABLE BODY

Reveals C-O-B Work Light



250 LUMEN

C-O-B Work Light

4x ADJUSTABLE ZOOM
From Spot to Flood



POWERFUL
Magnetic Base



NEBO SLYDE^Z

COUNTERTOP DISPLAY

Display Dimensions

(H) 313 mm x (W) 230mm x (D) 245 mm
Each SLYDE™Z includes a gift box and instruction manual.



CODE	DESCRIPTION	Display Pack
NE6267	SLYDEZ™ Flashlight & Work Light	8 Pieces

NEBO[®] SLYDE

FLASHLIGHT & WORK LIGHT

Combining the best that NEBO[®] has to offer, the SLYDE™ features a powerful LED flashlight and C-O-B work light all in one. At first glance, the SLYDE™ appears to be a simple strong flashlight, emitting 250 lumens of intense white light... and it is! However, you will see the SLYDE™ is much more. The body of the SLYDE™ conceals a powerful 190 lumen work light. To reveal the C-O-B work light, just SLYDE to open!

LIGHT

- High-power 250 lumen LED flashlight
- High-power 190 lumen C-O-B work light

DESIGN

- Anodised aircraft-grade aluminium
- Water and impact-resistant
- Work light is concealed inside the flashlight body; just SLYDE to reveal
- Powerful magnetic base

OPERATION

- Side-positioned ON/OFF button with Soft Touch Technology

BATTERIES

- Powered by 4 AAA batteries (included)

SPECIFICATIONS

- Weight with batteries - 305g
- Length - 170 mm (Compacted) 230 mm (Extended)
- Diameter - 42 mm (Head) 33 mm (Barrel)



C-O-B (Chips on Board)

A new innovation in LED technology. COB features smaller, easier clustered LED chips that are mounted directly to the circuit board. These LED chips work together as one lighting module. Because of the compact design, COB outperforms traditional lighting by up to 50 times the light output per centimeter of light surface.

250 LUMEN
LED Flashlight

EXTENDABLE BODY
Reveals Work Light

190 LUMEN
COB Work Light

2in1
FLASHLIGHT &
WORK LIGHT

NEBO[®] SLYDE

COUNTERTOP DISPLAY

Magnetic Display

- Display holds 8 pieces; 8 additional pieces are included as replenishments
- Display securely attaches each product using the magnetic base
- Display also allows product to be easily tested by consumers

Display Dimensions

(H) 355mm x (W) 265mm x (D) 205mm



TWO LIGHT MODES

FLASHLIGHT:

- 250 Lumens**
- 2 Hours
- 220 Meters

WORK LIGHT:

- 190 Lumens**
- 3.5 Hours
- 18 Meters



TRY ME
POS
STAND

CODE	DESCRIPTION	Display Pack
NE6156	SLYDE Flashlight	16 Pieces

NEBO®

Larry™2

12 LED WORK LIGHT & FLASHLIGHT

Larry™2 has a few more LEDs under his belt, which boosts his lumen output to 160! The Larry™2 also features an LED light that shines from the top turning into a useful flashlight. Being the essential handyman light, the Larry™2 has some great features: the 180° rotating magnetic clip, reinforced plastic body design and ergonomic grip. The Larry™2 is perfect for endless applications and is still convenient enough to slip into your pocket.

LIGHTS

- 12 high-power LEDs output 160 lumens
- 1 LED output 15 lumens

DESIGN

- Water and impact resistant
- Ergonomic non-slip grip
- 180° rotating magnetic clip
- Protective LED housing

OPERATION

- Side Light: ON/OFF button
- Top Light: ON/OFF button

BATTERIES

- Powered by 3 AAA batteries (included)

SPECIFICATIONS

- Weight with batteries - 84g
- Length - 170 mm
- Width - 21 mm
- Diameter - 36 mm



ON/OFF BUTTON
Controls the Light

ERGONOMIC
Non-Slip Grip

15 LUMEN FLASHLIGHT
Independently Controlled

ON/OFF BUTTON
Controls the Light

180° ROTATING
Magnetic Clip

160 LUMEN
Work Light



NEBO®

Larry™2

COUNTERTOP DISPLAY

Assorted Colour Display

- Display holds 12 pieces; 12 additional pieces are stored inside the pull-out tray
- Display has a magnetic strip to securely attach each product
- Display allows product to be easily tested by consumers

Display Dimensions

(H) 160mm x (W) 230mm x (D) 130mm



TWO LIGHT MODES

LIGHT:
160 Lumens

- 2 Hours
- 40 Meters

LIGHT:
15 Lumens

- 30 Hours
- 40 Meters



CODE	DESCRIPTION	Display Pack
NE7002	Larry2 12 LED Work Light	24 Pieces

TRANSPORT®

DC RECHARGEABLE LIGHT

The TRANSPORT® is a compact, rechargeable flashlight that provides powerful bright light at your fingertips! Just plug directly into your car, van, boat or any other 12V outlet to charge your flashlight. The TRANSPORT® is compatible with any DC 12V socket. Ideal for travel, the TRANSPORT® conveniently fits in your pocket, handbag, glove compartment or travel bag.

LIGHT
• High-power 125 lumen LED

DESIGN
• Fully rechargeable
• Fits any 12V outlet (car cigarette lighter)
• Anodised aircraft-grade aluminium; water and impact-resistant

OPERATION
• Top-positioned ON/OFF dial; twist to activate

BATTERIES
• Powered by 1 16340 Lithium Ion rechargeable battery (included)

SPECIFICATIONS
• Weight with battery - 85g
• Length - 935 mm
• Diameter - 22 mm



ONE LIGHT MODE

125 LUMENS
• 1 Hour
• 90 Meters



Display Dimensions
(H) 184mm x (W) 193mm x (D) 158mm

Magnetic Display
• Display holds 8 pieces; 1 piece is stored in the front of the display to show how product sits in 12V outlet
• Assorted colour display: 12 black & 6 gray
• 9 additional pieces are included as replenishments

CODE	DESCRIPTION	Display Pack
NE6275	TRANSPORT®	18 Pieces

LUMO™

OMNIDIRECTIONAL CLIP LIGHT

Compact, handy and bright...the LUMO™ Clip Light by NEBO® is the perfect "whatever you need it to be" light. Key chain light, purse light, backpack light, book light...the possibilities are endless. This compact 25 lumen light comes with a carabiner attachment to clip anywhere you need. The white top of the LUMO™ is a diffuser dome. This dome helps spread the light evenly to create a more omnidirectional light source. LUMO™ Clip Light...the brilliant clip light!

LIGHT
• High-power 25 lumen LED

DESIGN
• Anodised aircraft-grade aluminium, water and impact-resistant
• Carabiner clip
• Glow-in-the-dark button
• Diffuser dome

OPERATION
• Rear-positioned glow-in-the-dark ON/OFF button

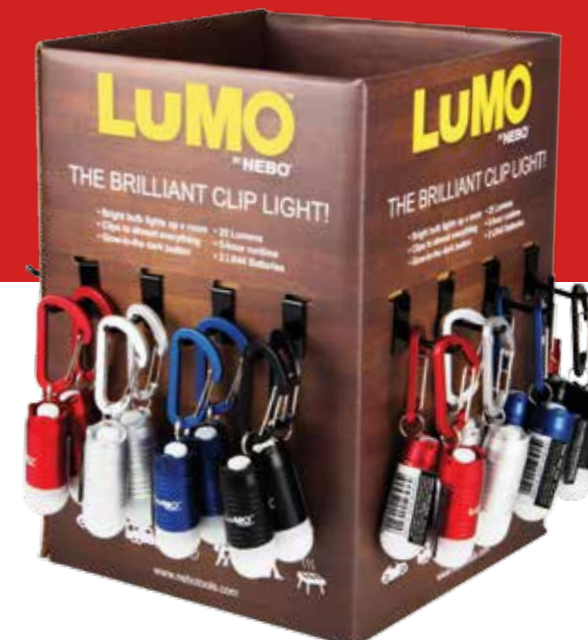
BATTERIES
• Powered by 3 LR44 batteries (included)

SPECIFICATIONS
• Weight with batteries - 25g
• Length - 92 mm
• Diameter - 19 mm



ONE LIGHT MODE

25 LUMENS
• 5 Hours
• 3 Meters



Display Dimensions
(H) 228mm x (W) 165mm x (D) 165mm

Magnetic Display
• Display holds 48 pieces total; 32 pieces on display and 16 additional pieces stored inside
• Display allows product to be easily tested by consumers.

CODE	DESCRIPTION	Display Pack
NE6095	Lumo™	48 Pieces

NEBO®

MICRO
REDLINE®

6x ZOOM WITH 4 LIGHT MODES

Don't let the micro size fool you...the Micro REDLINE® OC™ packs enough power to carry the REDLINE® name. This light is small enough to fit in the palm of your hand, but bright enough for any situation. Equipped with OC™ Technology the Micro has a perfectly dispersed beam of light while in flood mode. The Micro REDLINE® OC™...small never shined so big!

LIGHT

- High-power 62 Lumen LED

DESIGN

- Anodised aircraft-grade aluminium
- Water and impact-resistant
- OC™ Technology
- Convex lens
- 6x adjustable beam
- Steel belt/pocket clip
- Magnetic base

OPERATION

- Rear-positioned, glow-in-the-dark ON/OFF button with Soft Touch Technology

BATTERIES

- Powered by 1 CR2 battery (included)

SPECIFICATIONS

- Weight with battery - 51g
- Length - 66 mm
- Diameter - 22 mm (Head) 20 mm (Barrel)



ACTUAL SIZE
Comparison

6x ADJUSTABLE ZOOM
From Spot to Flood



MAGNETIC BASE
and Glow-in-the-dark button



STEEL
Belt/Pocket Clip



OPTIMISED CLARITY

Eliminating inconsistencies in light, the OC™ (Optimised Clarity) Technology provides intense, clear, pristine light that is easy on the eyes. This technology allows the light beam to be as bright on the edge as it is in the center when used in flood mode.



OPTIMISED CLARITY

Eliminating inconsistencies in light, the OC™ (Optimised Clarity) Technology provides intense, clear, pristine light that is easy on the eyes. This technology allows the light beam to be as bright on the edge as it is in the center when used in flood mode.



6x ADJUSTABLE ZOOM
From Spot to Flood

DUAL-DIRECTION
Belt/Pocket Clip



MAGNETIC BASE
and Glow-in-the-dark button

NEBO®

REDLINE®

HIGH-POWER TACTICAL LIGHT

The REDLINE® OC™ outputs 100 LUM of pristine white light. 100 LUM is bright, but what makes the OC™ so special is the OC™ (Optimised Clarity) Technology. Coupled with the convex lens, the OC™ Technology creates optimized clarity with a perfectly dispersed beam of light while in flood mode. This sophisticated technology provides the intensity of a 100 LUM light that is easy on the eyes. The REDLINE® OC™...optimized clarity.

LIGHT

- High-power 100 Lumen LED

DESIGN

- Anodised aircraft-grade aluminium
- Water and impact-resistant
- OC™ Technology
- Convex lens
- Tactical edge
- 6x adjustable beam
- Dual-direction belt/pocket clip
- Magnetic base

OPERATION

- Rear-positioned, glow-in-the-dark ON/OFF button with Soft Touch Technology

ACCESSORIES

- Lanyard included

BATTERIES

- Powered by 1 AA battery (included)

SPECIFICATIONS

- Weight with batteries - 115g
- Length - 105 mm
- Diameter - 25 mm
- Width - 35 mm



TRY ME
POS
STAND

Display Dimensions
(H) 203mm x (W) 190mm x (D) 210mm

Magnetic Display

- Display holds 12 pieces, 4 additional pieces are included as replenishments
- Products are magnetically secured to the metal display

CODE	DESCRIPTION	Display Pack
NE6092	REDLINE® OC	16 Pieces

FOUR LIGHT MODES

HIGH	MEDIUM	LOW	STROBE
62 LUMEN	32 LUMEN	8 LUMEN	62 LUMEN
• 3.5 Hours	• 6 Hours	• 10 Hours	• 7 Hours
• 76 Meters	• 54 Meters	• 25 Meters	• 76 Meters

*NOTE: Light resets to first light mode (HIGH) after being OFF for 20 seconds.



TRY ME
POS
STAND



Display Dimensions
(H) 203 mm x (W) 152 mm x (D) 98 mm

Magnetic Display

- Display holds 10 pieces, 6 additional pieces are included as replenishments
- Products are magnetically secured to the metal display

CODE	DESCRIPTION	Display Pack
NE6272	Micro REDLINE®	16 Pieces

TWO LIGHT MODES

100 LUMEN	STROBE
• 2 hr 30	• 8 Hours
• 94 Meters	



TRY ME
POS
STAND

Display Dimensions
(H) 203mm x (W) 190mm x (D) 210mm

Magnetic Display

- Display holds 12 pieces, 4 additional pieces are included as replenishments
- Products are magnetically secured to the metal display

CODE	DESCRIPTION	Display Pack
NE6092	REDLINE® OC	16 Pieces

NEBO ...BRIGHT IDEAS
TWYST
 SHAPING LIGHT LIKE NEVER BEFORE

WORK LIGHT, LANTERN & FLASHLIGHT

A light that does it all...with a TWYST™! The TWYST™ features a high-power work light, lantern and flashlight all in one! The TWYST™ uses a revolutionary new C•O•B LED technology that allows the shaping of light into full 3D patterns, giving optimal, bright, uniform light exactly where it's needed. Retractable base stabilizers are positioned at the bottom of the flashlight to give added stability on uneven surfaces. A powerful magnetic base also provides convenient hands-free lighting. TWYST™... shaping light like never before!

LIGHT

- 110 Lumen Work Light
- 250 Lumen Lantern
- 270 Lumen LED Flashlight

DESIGN

- Enhanced C•O•B LED Technology
- Tactical edge
- Fully dimmable beam
- Anodised aircraft-grade aluminium
- Water and impact-resistant
- Retractable base stabilizers
- Powerful magnetic base

OPERATION

- Side-positioned ON/OFF button

BATTERIES

- Powered by 4 AA batteries (included)
- 4 spare AA Duracell batteries (included)

SPECIFICATIONS

- Weight with batteries - 385g
- Length - 190 mm (Compacted) 200 mm (Extended)
- Diameter - 50.8 mm (Head) 31 mm (Barrel)

TWO LIGHT MODES

HIGH: 110 Lumens
 • 13.5 Hours
 • 15 Meters

LOW: 10 Lumens
 • 96 Hours
 • 1.5 Meters

WORK LIGHT - 120° Light Coverage

HIGH: 250 Lumens
 • 4 Hours
 • 15 Meters

LOW: 25 Lumens
 • 60 Hours
 • 1.5 Meters

LANTERN - 360° Light Coverage

HIGH: 270 LUM
 • 4 Hours
 • 233 Meters

LOW: 40 Hours
 • 74 Meters

FLASHLIGHT



WORK LIGHT, LANTERN & FLASHLIGHT



ENHANCED C•O•B LED TECHNOLOGY

Our new, proprietary C•O•B LED technology allows the shaping of light into full 3D patterns, giving optimal, bright, uniform light exactly where it's needed. With TWYST™, the C•O•B LED provides a 120° beam pattern work light and a 360° beam pattern lantern from the same light source. To reveal the C•O•B LED, simply twist the bezel counter-clockwise.



CODE	DESCRIPTION
NB6328	TWYST work Light, Lantern & Flashlight



Pack size 120 mm 300 mm

the BIG Larry™ POWER WORK LIGHT

POWER C-O-B LED WORK LIGHT

The BIG Larry™ knows how to light up a room! Equipped with new C-O-B LED technology, the BIG Larry™ outputs 400 lumens of intense light. Secondary light modes include Low (160 lumens) and the Emergency Red Flash mode. This intense red light is perfect for distress signaling or roadside emergencies. The anodised aluminium body and recessed LED housing ensures that the BIG Larry™ can handle any situation.

- LIGHT**
- High-power 400 lumen C-O-B LED work light
 - Low-power 160 lumen C-O-B LED work light
 - High-power C-O-B LED emergency red flasher

- DESIGN**
- Anodised aircraft-grade aluminium
 - Water and impact-resistant
 - Powerful magnetic base

- OPERATION**
- Top-positioned, ON/OFF button

- BATTERIES**
- Powered by 3 AA batteries (included)
 - 3 spare AA Duracell batteries (included)

- SPECIFICATIONS**
- Weight with batteries - 204g
 - Length - 188 mm
 - Diameter - 28 mm (Head) 22 mm (Barrel)

TOP-POSITIONED
ON/OFF Button



EMERGENCY
Red Flasher

AIRCRAFT-GRADE
Anodised Aluminium



POWERFUL
Magnetic Base



FLASHLIGHT
Independently Controlled

160 LUMEN
Work Light



ON/OFF BUTTON
Controls the Light

ERGONOMIC
Non-Slip Grip

12 LED WORK LIGHT & FLASHLIGHT

Larry™

Larry™2 has a few more LEDs under his belt, which boosts his lumen output to 160! The Larry™2 also features an LED light that shines from the top turning into a useful flashlight. Being the essential handyman light, the Larry™2 has some great features: the 180° rotating magnetic clip, reinforced plastic body design and ergonomic grip. The Larry™2 is perfect for endless applications and is still convenient enough to slip into your pocket.

- LIGHTS**
- 12 high-power LEDs output 160 lumens
 - 1 LED output 15 lumens

- DESIGN**
- Water and impact resistant
 - Ergonomic non-slip grip
 - 180° rotating magnetic clip
 - Protective LED housing

- OPERATION**
- Side Light: ON/OFF button
 - Top Light: ON/OFF button

- BATTERIES**
- Powered by 3 AAA batteries (included)
 - 3 spare AAA Duracell batteries (included)

- SPECIFICATIONS**
- Weight with batteries - 85g
 - Length - 170 mm
 - Width - 21 mm
 - Diameter - 36 mm



TRY ME
BUTTON



THREE LIGHT MODES

- | | | |
|--|--|---------------------------------|
| HIGH:
400 Lumens
• 4.5 Hours
• 29 Meters | LOW:
160 Lumens
• 15 Hours
• 17 Meters | RED FLASH:
• 40 Hours |
|--|--|---------------------------------|

TWO LIGHT MODES

- | | |
|--|---|
| WORK LIGHT:
160 Lumens
• 2 Hours
• 40 Meters | FLASH LIGHT:
15 Lumens
• 30 Hours
• 40 Meters |
|--|---|



TRY ME
BUTTON

CODE	DESCRIPTION
NB6306	BIG Larry™ Power C-O-B LED Work Light

CODE	DESCRIPTION
NB7002	Larry2™

WORKBRITE™

WORK LIGHT & FLASHLIGHT

The WORKBRITE™ by NEBO® adapts to your work environment, making it the handiest of work lights. The WORKBRITE™ features three different ways to provide you with hands-free lighting for the task at hand: a hanging hook, a 200° pivoting stand and a magnetic base. Whether you are under the hood, under the sink, or just out in the dark, the WORKBRITE™ works great for any application. WORKBRITE™...It stands! It hooks! It sticks! It lights! It WORKS!

- LIGHT**
- 20 high-power LEDs output 200 lumens
 - 6 high-power LEDs output 60 lumens

- DESIGN**
- Water and impact-resistant
 - Ergonomic non-slip grip
 - 200° pivoting magnetic stand
 - Collapsible, hanging hook

- OPERATION**
- ON/OFF button with Soft Touch Technology

- BATTERIES**
- Powered by 4 AAA batteries (included)
 - 4 spare AAA Duracell batteries (included)

- SPECIFICATIONS**
- Weight - 143g
 - Length - 230 mm
 - Width - 45 mm
 - Diameter - 25 mm



Pack size 120 mm 300 mm

**TRY ME
BUTTON**



ON/OFF BUTTON
with Soft Touch Technology

ERGONOMIC
Non-Slip Grip

200 LUMEN
Work Light

200° PIVOTING
Stand

60 LUMEN
Flashlight

COLLAPSIBLE
Hanging Hook

POWERFUL
Magnetic Base

THE RECHARGEABLE WORKBRITE 2™

RECHARGEABLE WORK LIGHT

Never worry about replacing batteries again, with The Rechargeable WORKBRITE 2™. This work light is equipped with a 220 lumen C-O-B LED work light, a 120 lumen flashlight and a rear, emergency red flasher LED. The WORKBRITE 2™ provides hands-free lighting in three different ways: a hanging hook, a 200° pivoting stand and a magnetic base. Whether you are under the hood, under the sink or just out in the dark, the WORKBRITE 2™ works great for any application. WORKBRITE 2™...It stands! It hooks! It sticks! It lights! It recharges! It WORKS!

- LIGHT**
- High-power 120 lumen LED flashlight
 - High-power 220 lumen C-O-B LED work light
 - Emergency Red Flasher LED

- DESIGN**
- Fully rechargeable
 - Water and impact-resistant
 - Ergonomic, non-slip grip
 - 200° pivoting magnetic stand
 - Collapsible, hanging hook

- OPERATION**
- Front-positioned, ON/OFF button
 - Emergency Red Flash is independently controlled; press light to activate

- BATTERIES**
- Powered by 1 18650 Li-ion Rechargeable Battery

- SPECIFICATIONS**
- Weight with battery - 195g
 - Length - 215 mm
 - Diameter - 50 mm (Width) 38 mm (Depth)



COLLAPSIBLE
Hanging Hook

EMERGENCY
Red Flasher

USB TO MICRO USB
Cable included

POWERFUL
Magnetic Base

TWO LIGHT MODES

- WORK LIGHT:**
200 Lumens
- 2 Hours
 - 40 Meters

- FLASHLIGHT:**
60 Lumens
- 4 Hours
 - 25 Meters

THREE LIGHT MODES

- WORK LIGHT:**
220 Lumens
- 7 Hours
 - 322 Meters

- FLASHLIGHT:**
120 Lumens
- 25 Hours
 - 160 Meters

- RED FLASH:**
• 200 Hours



Pack size 120 mm 300 mm

**TRY ME
BUTTON**

CODE	DESCRIPTION
NB6001	WORKBRITE™

CODE	DESCRIPTION
NB6305	The Rechargeable WORKBRITE 2™

PaL

RECHARGEABLE POWER & LIGHT

This portable, rechargeable flashlight serves as a backup power source for mobile phones and other rechargeable USB electronic devices. Ideal for travel, the PaL conveniently fits in your pocket, purse or briefcase.

LIGHT

- High-power 50 lumen LED

DESIGN

- Fully rechargeable
- Power bank for your USB powered devices
- Anodised aircraft-grade aluminium
- Impact-resistant
- USB & Micro USB charging ports
- Apple® & Android™ compatible
- Charging indicator tells charging status of flashlight and your USB powered devices

OPERATION

- Rear-positioned ON/OFF button with charging indicator

ACCESSORIES

- USB to Micro USB cable included

BATTERIES

- Powered by 1 internal 2600 mAh Lithium-Ion Battery (Type 18650)

SPECIFICATIONS

- Weight with battery - 78g
- Length - 110 mm
- Diameter - 22 mm

HIGH-POWER
50 Lumen LED

APPLE® & ANDROID™
Compatible

USB to MICRO USB
10" Cable Included

USB / MICRO USB
Charging Ports

NEBO® ...BRIGHT IDEAS



TRY ME
BUTTON

Pack size 120 mm 240 mm

ONE LIGHT MODE

50 Lumens
• 17.5 Hours
• 54 Meters

250 LUMEN
LED Flashlight

EXTENDABLE BODY
Reveals Work Light

190 LUMEN
C-O-B Work Light

POWERFUL
Magnetic Base



TWO LIGHT MODES

FLASHLIGHT:
250 Lumens
• 2 Hours
• 220 Meters

WORK LIGHT
190 Lumens
• 3.5 Hours
• 18 Meters



COB (Chips on Board)

A new innovation in LED technology. COB features smaller, easier clustered LED chips that are mounted directly to the circuit board. These LED chips work together as one lighting module. Because of the compact design, COB outperforms traditional lighting by up to 50 times the light output per centimeter of light surface.

CODE	DESCRIPTION
NB6156	SLYDE™

SLYDE

FLASHLIGHT & WORK LIGHT

Combining the best that NEBO® has to offer, the SLYDE™ features a powerful LED flashlight and C-O-B work light all in one. At first glance, the SLYDE™ appears to be a simple, strong flashlight, emitting 250 lumens of intense white light...and it is! However, you will see the SLYDE™ is much more. The body of the SLYDE™ conceals a powerful 190 lumen work light. To reveal the C-O-B work light, just SLYDE to open!

LIGHT

- High-power 250 lumen LED flashlight
- High-power 190 lumen COB work light

DESIGN

- Anodised aircraft-grade aluminium
- Water and impact-resistant
- Work light is concealed inside the flashlight body; just SLYDE to reveal
- Powerful magnetic base

OPERATION

- Side-positioned ON/OFF button with Soft Touch Technology

BATTERIES

- Powered by 4 AAA batteries (included)
- 4 spare AA Duracell batteries (included)

SPECIFICATIONS

- Weight with batteries - 305g
- Length - 170 mm Extended - 230 mm
- Diameter - 42 mm Head 33 mm Barrel

NEBO® ...BRIGHT IDEAS



4 x AAA batteries included
POWERED BY
DURACELL

2 in 1
INNOVATION
FLASHLIGHT & WORK LIGHT

TRY ME
BUTTON

Pack size 120 mm 300 mm

CODE	DESCRIPTION
NB6227	PAL

CLiPLiTE

3 IN ONE LED LIGHTING TOOL

The CLiPLiTE - the most useful 3 in one LED lighting tool you will ever own. 3 in 1 combination - Flashlight, Side Light, and Lantern.

Flashlight - a hand-held flashlight with a 30 lumen LED on the end.

Side Light - a side light with 60 lumens from 3 LED's that can stand upright anywhere - useful for general illumination.

Lantern - a hanging or standing lantern with 120 lumens. The CLiPLiTE can be easily attached and hung from almost anything.

So versatile and bright...perfect for any night time activity..

LIGHTS

- High-power 30 Lumen LED - 10.5 Hours / 16 Meters
- High-power 60 Lumens - 14 Hours / 10 Meters
- High-power 120 Lumens - 3 Hours / 9 Meters

DESIGN

- ABS Plastic
- Water and impact-resistant
- Carabiner clip
- Glow-in-the-dark button
- Diffuser dome

OPERATION

- Front ON/OFF button

BATTERIES

- Powered by 4 x AAA batteries (included)
- 4 spare AAA Duracell batteries (included)

SPECIFICATIONS

- Weight with batteries - 110g
- Length - 150 mm
- Width - 40 mm
- Diameter - 25 mm



TRY ME
BUTTON

Pack size 120 mm 240 mm

LUMO™

OMNIDIRECTIONAL CLIP LIGHT

Compact, handy and bright...the LUMO™ Clip Light by NEBO® is the perfect "whatever you need it to be" light. Key ring light, handbag light, travel light, book light...the possibilities are endless. This compact 25 lumen light comes with a carabiner attachment to clip anywhere you need. The white top of the LUMO™ is a diffuser dome. This dome helps spread the light evenly to create a more omnidirectional light source. LUMO™ Clip Light...the brilliant clip light!

LIGHT

- High-power 25 lumen LED

DESIGN

- Anodised aircraft-grade aluminium
- Water and impact-resistant
- Carabiner clip
- Glow-in-the-dark button
- Diffuser dome

OPERATION

- Rear-positioned glow-in-the-dark ON/OFF button

BATTERIES

- Powered by 3 LR44 batteries (included)

SPECIFICATIONS

- Weight with batteries - 25g
- Length - 92 mm
- Diameter - 19 mm



TRY ME
BUTTON

Pack size 90 mm 130 mm

THREE LIGHT MODE

4 x AAA batteries included



30 Lumens
• 10.5 Hours
• 16 Meters

60 Lumens
• 14 Hours
• 10 Meters

120 Lumens
• 3 Hours
• 9 Meters

ONE LIGHT MODE

25 Lumens
• 5 Hours
• 3 Meters

CODE	DESCRIPTION
NB7001	CLiPLiTE

CODE	DESCRIPTION
NB6095	LUMO™

FLASHLIGHT & WORK LIGHT

PRODUALLIGHT

Combining the best that NEBO® has to offer, the SLYDE™ features a powerful LED flashlight and C•O•B work light all in one. At first glance, the SLYDE™ appears to be a simple, strong flashlight, emitting 250 lumens of intense white light... and it is! However, you will see the SLYDE™ is much more. The body of the SLYDE™ conceals a powerful 190 lumen work light. To reveal the C•O•B work light, just SLYDE to open!

- LIGHT**
- High-power 250 lumen LED flashlight
 - High-power 190 lumen C•O•B work light

- DESIGN**
- Tactical edge
 - Anodised aircraft-grade aluminium
 - Water and impact-resistant
 - Work light is concealed inside the flashlight body; just SLYDE to reveal
 - Powerful magnetic base

- OPERATION**
- Side-positioned ON/OFF button with Soft Touch Technology

- BATTERIES**
- Powered by 4 AAA batteries (included)

- SPECIFICATIONS**
- Weight with batteries - 305g
 - Length - 170 mm (Compacted) 230 mm (Extended)
 - Diameter - 42 mm (Head) 33 mm (Barrel)

250 LUMEN
LED Flashlight

2 in 1
INNOVATION
FLASHLIGHT & WORK LIGHT



EXTENDABLE BODY
Reveals C•O•B Work Light

190 LUMEN
C•O•B Work Light



TWO LIGHT MODES

- | | |
|-------------------------|-------------------------|
| Flashlight - 250 Lumens | Work Light - 190 Lumens |
| • 2 Hours | • 3.5 Hours |
| • 220 Meters | • 18 Meters |



C•O•B (Chips on Board)

A new innovation in LED technology. COB features smaller, easier clustered LED chips that are mounted directly to the circuit board. These LED chips work together as one lighting module. Because of the compact design, COB outperforms traditional lighting by up to 50 times the light output per centimeter of light surface.

Clamshell Dimensions
(H) 265 x (W) 113.03 x (D) 44 mm



POWERFUL
Magnetic Base

CODE	DESCRIPTION
IP6295	PRODUALLIGHT SLYDE



Colour-CHANGING
High-Power LED

STEEL
Belt/Pocket Clip

GLOW-IN-THE-DARK
Tactical Button

GREEN/RED
Mixture



Clamshell Dimensions
(H) 208 x (W) 113 x (D) 41mm

CODE	DESCRIPTION
IP5905	iPROTEC™ CHAMELEON™

FOUR LIGHT MODES

- | | | | |
|---|--|--|--|
| WHITE - 100 LUMEN
• 4 Hours
• 80 Meters | GREEN - 90 LUMEN
• 5 Hours
• 70 Meters | RED - 85 LUMEN
• 7 Hours
• 50 Meters | STROBE - 100 LUMEN
• 5 Hours
• 80 Meters |
|---|--|--|--|

THREE LIGHT MODES

- | | | |
|---|-----------------------------------|-----------------------------|
| WHITE LED - 150 LUMEN
• 3 Hours
• 56 Meters | GREEN - 3.5 LUMEN
• 7.5 Meters | RED - 4 LUMEN
• 8 Meters |
|---|-----------------------------------|-----------------------------|

TOP POSITIONED

ON/OFF Toggle Switch

HEAD BAND

Adjustable



TACTICAL LIGHT MODES

White + Green + Red

ADJUSTABLE

90° Vertical tilt



White

Green

Red

CODE	DESCRIPTION
IP6180	PRO150LIGHT

Clamshell Dimensions
(H) 208 x (W) 113 x (D) 75 mm

TACTICAL FLASHLIGHT

CHAMELEON

The Chameleon™ has a high-power, colour-changing LED that outputs white, green and red light. Hard/Soft Touch Technology allows you to easily cycle through the four impressive light modes.

- LIGHT**
- High-power colour-changing LED

- DESIGN**
- Anodised aircraft-grade aluminium
 - Water and impact-resistant
 - Convex lens
 - 4x adjustable zoom
 - Steel belt/pocket clip

- OPERATION**
- Rear-positioned ON/OFF button with Soft Touch Technology

- BATTERIES**
- 1 AA batteries included

- SPECIFICATIONS**
- Weight in batteries - 85g
 - Length open - 107 mm closed 101 mm
 - Diameter - 25 mm (Head) 19 mm (Barrel)

TACTICAL HEADLAMP

PRO150LIGHT

The PRO 150 LIGHT Headlamp has a high-power LED that outputs 150 lumens of intense white light and 2 additional tactical coloured lights, GREEN and RED.

- LIGHT**
- 150 Lumen Work Light
 - 3.5 Lumen Green Light
 - 4 Lumen Red Light

- DESIGN**
- Light travels 56 metres
 - Three colour lighting modes
 - Adjustable elastic head strap
 - Water and impact - resistant
 - 90° Vertical tilt

- OPERATION**
- 3 light modes: white, green & red
 - ON/OFF button on top

- BATTERIES**
- Powered by 3 AAA batteries (included)

- SPECIFICATIONS**
- Weight - 90g
 - Length - 59 mm (Compacted) 80 mm (Extended)
 - Width - 45 mm 19 mm (Barrel)

**TACTICAL FLASHLIGHT
PRO280LIGHT**

- Convex lens
- Anodised aircraft grade aluminium
- Water-resistant
- Compact body design
- Rear glow in the dark tactical button
- 4 X adjustable beam zoom, steel clip
- Impact resistant: 2 meters
- 3 Duracell AAA batteries (1 Set included)

SPECIFICATIONS

- Weight with batteries - 158g
- Length - 118 mm (Compacted)
127 mm (Extended)
- Diameter - 38 mm

CODE	DESCRIPTION
IP5620	iPROTEC PRO280LIGHT

**280
LUMENS**



**220
LUMENS**



**TACTICAL FLASHLIGHT
PRO220LIGHT**

- Anodised aircraft grade aluminium
- Water-resistant
- Compact body design
- Rear glow in the dark tactical button
- Convex lens
- 4 X adjustable beam
- Powerful magnetic base for hands-free lighting
- Impact resistant: 2 meters, steel clip
- 3 Duracell AAA batteries included

SPECIFICATIONS

- Weight with batteries - 133g
- Length - 110 mm (Compacted)
116 mm (Extended)
- Diameter - 34 mm

CODE	DESCRIPTION
IP5929	iPROTEC PRO220LIGHT

FIVE LIGHT MODES

- | | | | | |
|--|---|--|---|--|
| High - 280 Lumens
• 2.5 Hours
• 198 Meters | Medium - 70 Lumens
• 5 Hours
• 100 Meters | Low - 37 Lumens
• 12 Hours
• 40 Meters | Strobe - 220 Lumens
• 60 Hours
• 200 Meters | S.O.S - 220 Lumens
• 60 Hours
• 200 Meters |
|--|---|--|---|--|

FIVE LIGHT MODES

- | | | | | |
|--|---|--|--|---|
| High - 220 Lumens
• 4 Hours
• 138 Meters | Medium - 110 Lumens
• 8 Hours
• 60 Meters | Low - 22 Lumens
• 15 Hours
• 27 Meters | S.O.S - 220 Lumens
• 72 Hours
• 138 Meters | Strobe - 220 Lumens
• 72 Hours
• 138 Meters |
|--|---|--|--|---|

TWO LIGHT MODES

- | | |
|--|--|
| High - 180 Lumens
• 120 Min
• 115 Meters | Strobe - 180 Lumens
• 390 Min
• 115 Meters |
|--|--|

TWO LIGHT MODES

- | | |
|---|---|
| High - 100 Lumens
• 120 Min
• 80 Meters | Strobe - 100 Lumens
• 270 Min
• 80 Meters |
|---|---|

**TACTICAL FLASHLIGHT
PRO180LIGHT**

- Anodised aircraft grade aluminium
- Water-resistant
- Compact body design
- Rear glow-in-the-dark button
- Powerful magnetic base for hands-free lighting
- Convex lens
- 1 Duracell AA battery included

SPECIFICATIONS

- Weight wei - 82g
- Length - 100 mm (Compacted)
106 mm (Extended)
- Diameter - 27 mm

CODE	DESCRIPTION
IP6079	iPROTEC PRO180LIGHT

**180
LUMENS**



**100
LUMENS**



**TACTICAL FLASHLIGHT
PRO100LIGHT**

- Anodised aircraft grade aluminium
- Water-resistant
- Compact body design
- Removable chrome plated head, steel clip
- Rear glow-in-the-dark button - this button allows you to easily activate the light while maintaining constant control of the flashlight
- 1 Duracell AA battery included

SPECIFICATIONS

- Weight with batteries - 65g
- Length - 102 mm (Compacted)
108 mm (Extended)

CODE	DESCRIPTION
IP6078	iPROTEC PRO100LIGHT

sales@true-brands.co.uk +44(0)1202 755392 www.nebotools.co.uk

For more information or to place an order contact your True Brands sales representative
True Brands Ltd. Unit 2 Branksome Business Park, Unit 2 Bourne Valley Road, Poole, BH12 1DW, UK