

Supplement to Catalogue LT112/UK

# Low Voltage Switchgear

## Disconnect Switches






## Main/Emergency-Off Switches

- Enclosed switches with insulated enclosure (polycarbonate)
- 2 up to 8 pole
- 20 A up to 125 A
- IP66



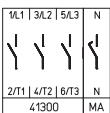
Switching programme	Rated data (IEC 60947)			Enclosure dimension (H × W × D) (mm)	Padlock device N-handle yellow/red  IP66
	Operat. current I <sub>c</sub>	Operational power (at 380–440 V)			
	AC-21A (A)	AC-23A (kW)	AC-3 (kW)		
<b>41200</b> – 2 pole – without auxiliary contacts	20	5.5	3.7	125 × 100 × 85	<b>H216-41200-700N4</b> <sup>1</sup>
	25	7.5	5.5	125 × 100 × 85	<b>H220-41200-700N4</b> <sup>1</sup>
	32	11	7.5	125 × 100 × 85	<b>H226-41200-700N4</b> <sup>1</sup>



<b>41300</b> – 3 pole – without auxiliary contacts	20	5.5	3.7	100 × 80 × 65	<b>H212-41300-077N4</b> <sup>2</sup>
	63	22	18.5	250 × 160 × 95	<b>H406-41300-177N4</b> <sup>2</sup>
	63	22	18.5	320 × 220 × 180	<b>H406-41300-471N4</b> <sup>1</sup>
	80	30	22	250 × 160 × 95	<b>H408-41300-177N4</b> <sup>2</sup>
	80	30	22	320 × 220 × 180	<b>H408-41300-471N4</b> <sup>1</sup>
	100	37	30	250 × 160 × 95	<b>H410-41300-177N4</b> <sup>2</sup>
	100	37	30	320 × 220 × 180	<b>H410-41300-471N4</b> <sup>1</sup>
	125	45	37	320 × 220 × 180	<b>H412-41300-471N4</b> <sup>1</sup>



<b>41400</b> – 4 pole – without auxiliary contacts – neutral contact early make/late break	20	5.5	3.7	100 × 80 × 65	<b>H212-41400-077N4</b> <sup>2</sup>
	63	22	18.5	250 × 160 × 95	<b>H406-41400-177N4</b> <sup>2</sup>
	63	22	18.5	320 × 220 × 180	<b>H406-41400-471N4</b> <sup>1</sup>
	63	22	18.5	320 × 220 × 180	<b>H406-41400-461N4</b> <sup>1</sup> (w/o N-terminal)
	80	30	22	250 × 160 × 95	<b>H408-41400-177N4</b> <sup>2</sup>
	80	30	22	320 × 220 × 180	<b>H408-41400-471N4</b> <sup>1</sup>
	80	30	22	320 × 220 × 180	<b>H408-41400-461N4</b> <sup>1</sup> (w/o N-terminal)
	100	37	30	250 × 160 × 95	<b>H410-41400-177N4</b> <sup>2</sup>
	100	37	30	320 × 220 × 180	<b>H410-41400-471N4</b> <sup>1</sup>
	100	37	30	320 × 220 × 180	<b>H410-41400-461N4</b> <sup>1</sup> (w/o N-terminal)
	125	45	37	320 × 220 × 180	<b>H412-41400-471N4</b> <sup>1</sup>
	125	45	37	320 × 220 × 180	<b>H412-41400-461N4</b> <sup>1</sup> (w/o N-terminal)




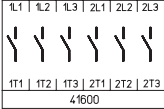
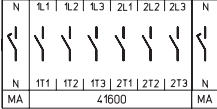
<sup>1</sup> Cover interlock in ON position

<sup>2</sup> Cover security through screw shroud

Further switching programmes please see Main Catalogue.

# Disconnect Switches

## Main/Emergency-Off Switches Enclosed Switches – Insulated Enclosure

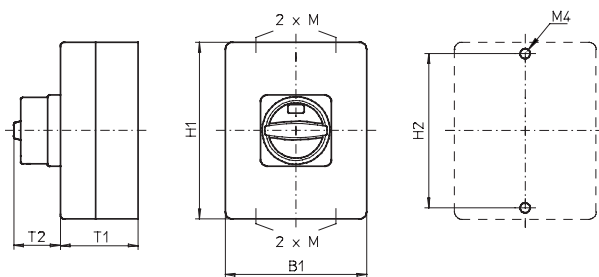
Switching programme	Rated data (IEC 60947)			Enclosure dimension (H × W × D) (mm)	Padlock device N-handle yellow/red  IP66
	Operat. current I <sub>e</sub>	Operational power (at 380–440 V)			
	AC-21A (A)	AC-23A (kW)	AC-3 (kW)		
<b>41600</b> – 6 pole – without auxiliary contacts 	20	5.5	3.7	250 × 160 × 95	<b>H216-41600-477N4</b> <sup>1</sup>
	25	7.5	5.5	250 × 160 × 95	<b>H220-41600-477N4</b> <sup>1</sup>
	32	11	7.5	250 × 160 × 95	<b>H226-41600-477N4</b> <sup>1</sup>
	40	15	11	250 × 160 × 95	<b>H233-41600-477N4</b> <sup>1</sup>
<b>41800</b> – 8 pole – without auxiliary contacts – 2 neutral contacts early make/late break 	20	5.5	3.7	250 × 160 × 95	<b>H216-41800-477N4</b> <sup>1</sup>
	20	5.5	3.7	250 × 160 × 95	<b>H216-41800-467N4</b> <sup>1</sup> (w/o N-terminal)
	25	7.5	5.5	250 × 160 × 95	<b>H220-41800-477N4</b> <sup>1</sup>
	25	7.5	5.5	250 × 160 × 95	<b>H220-41800-467N4</b> <sup>1</sup> (w/o N-terminal)
	32	11	7.5	250 × 160 × 95	<b>H226-41800-477N4</b> <sup>1</sup>
	32	11	7.5	250 × 160 × 95	<b>H226-41800-467N4</b> <sup>1</sup> (w/o N-terminal)
	40	15	11	250 × 160 × 95	<b>H233-41800-477N4</b> <sup>1</sup>
40	15	11	250 × 160 × 95	<b>H233-41800-467N4</b> <sup>1</sup> (w/o N-terminal)	

<sup>1</sup> Without cover interlock

Further switching programmes please see Main Catalogue.

### Dimensions in mm:

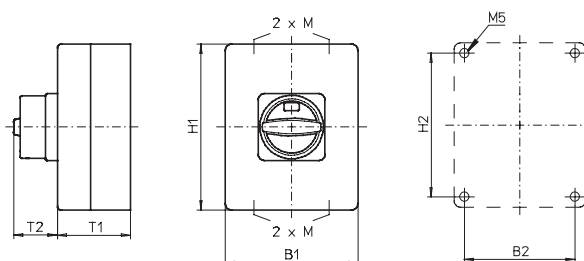
Setup of order code number		
Type	Switching progr.	Mtg. form
H406	41400	177N4
Order code no.	<b>H406-41400-177N4</b>	



Insulated enclosures **100 × 80 × 65 mm / 125 × 100 × 85 mm / 250 × 160 × 95 mm:**

Types H212 / H216 / H220 / H226 / H406 / H408 / H410 / H412:

Mounting form	H1	B1	T1	T2	2×M	H2
077N4	100	80	65	33	20	90
700N4	125	100	85	33	20/25	115
177N4	250	160	95	45	25/32	240
467N4	250	160	95	33	25/32	240
477N4	250	160	95	33	25/32	240



Insulated enclosure **320 × 220 × 180 mm:**


Types H216 / H220 / H226 / H233 / H406 / H408 / H410 / H412:

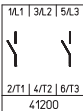
Mounting form	H1	B1	T1	T2	H2	B2
461N4	320	220	180	45	293	193
471N4	320	220	180	45	293	193

## Main Switches

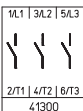
- Enclosed switches with insulated enclosure (polycarbonate)
- 2 up to 8 pole
- 20 A up to 125 A
- IP66



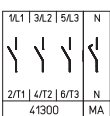
Switching programme	Rated data (IEC 60947)			Enclosure dimension (H × W × D) (mm)	Padlock device N-handle black  IP66
	Operat. current I <sub>c</sub>	Operational power (at 380–440 V)			
	AC-21A (A)	AC-23A (kW)	AC-3 (kW)		
<b>41200</b> – 2 pole – without auxiliary contacts	20	5.5	3.7	125 × 100 × 85	<b>H216-41200-700N1</b> <sup>1</sup>
	25	7.5	5.5	125 × 100 × 85	<b>H220-41200-700N1</b> <sup>1</sup>
	32	11	7.5	125 × 100 × 85	<b>H226-41200-700N1</b> <sup>1</sup>



<b>41300</b> – 3 pole – without auxiliary contacts	20	5.5	3.7	100 × 80 × 65	<b>H212-41300-077N1</b> <sup>2</sup>
	63	22	18.5	250 × 160 × 95	<b>H406-41300-177N1</b> <sup>2</sup>
	63	22	18.5	320 × 220 × 180	<b>H406-41300-471N1</b> <sup>1</sup>
	80	30	22	250 × 160 × 95	<b>H408-41300-177N1</b> <sup>2</sup>
	80	30	22	320 × 220 × 180	<b>H408-41300-471N1</b> <sup>1</sup>
	100	37	30	250 × 160 × 95	<b>H410-41300-177N1</b> <sup>2</sup>
	100	37	30	320 × 220 × 180	<b>H410-41300-471N1</b> <sup>1</sup>
	125	45	37	320 × 220 × 180	<b>H412-41300-471N1</b> <sup>1</sup>



<b>41400</b> – 4 pole – without auxiliary contacts – neutral contact early make/late break	20	5.5	3.7	100 × 80 × 65	<b>H212-41400-077N1</b> <sup>2</sup>
	63	22	18.5	250 × 160 × 95	<b>H406-41400-177N1</b> <sup>2</sup>
	63	22	18.5	320 × 220 × 180	<b>H406-41400-471N1</b> <sup>1</sup>
	63	22	18.5	320 × 220 × 180	<b>H406-41400-461N1</b> <sup>1</sup> (w/o N-terminal)
	80	30	22	250 × 160 × 95	<b>H408-41400-177N1</b> <sup>2</sup>
	80	30	22	320 × 220 × 180	<b>H408-41400-471N1</b> <sup>1</sup>
	80	30	22	320 × 220 × 180	<b>H408-41400-461N1</b> <sup>1</sup> (w/o N-terminal)
	100	37	30	250 × 160 × 95	<b>H410-41400-177N1</b> <sup>2</sup>
	100	37	30	320 × 220 × 180	<b>H410-41400-471N1</b> <sup>1</sup>
	100	37	30	320 × 220 × 180	<b>H410-41400-461N1</b> <sup>1</sup> (w/o N-terminal)
	125	45	37	320 × 220 × 180	<b>H412-41400-471N1</b> <sup>1</sup>
	125	45	37	320 × 220 × 180	<b>H412-41400-461N1</b> <sup>1</sup> (w/o N-terminal)




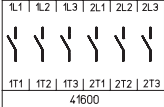
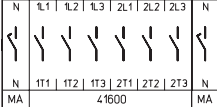
<sup>1</sup> Cover interlock in ON position

<sup>2</sup> Cover security through screw shroud

Further switching programmes please see Main Catalogue.

# Disconnect Switches

## Main Switches Enclosed Switches – Insulated Enclosure

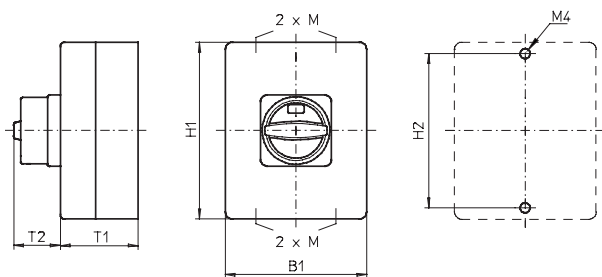
Switching programme	Rated data (IEC 60947)			Enclosure dimension (H × W × D) (mm)	Padlock device N-handle black  IP66
	Operat. current I <sub>e</sub> (A)	Operational power (at 380–440 V) (kW)			
<b>41600</b> – 6 pole – without auxiliary contacts 	20	5.5	3.7	250 × 160 × 95	<b>H216-41600-477N1</b> <sup>1</sup>
	25	7.5	5.5	250 × 160 × 95	<b>H220-41600-477N1</b> <sup>1</sup>
	32	11	7.5	250 × 160 × 95	<b>H226-41600-477N1</b> <sup>1</sup>
	40	15	11	250 × 160 × 95	<b>H233-41600-477N1</b> <sup>1</sup>
<b>41800</b> – 8 pole – without auxiliary contacts – 2 neutral contacts early make/late break 	20	5.5	3.7	250 × 160 × 95	<b>H216-41800-477N1</b> <sup>1</sup>
	20	5.5	3.7	250 × 160 × 95	<b>H216-41800-467N1</b> <sup>1</sup> (w/o N-terminal)
	25	7.5	5.5	250 × 160 × 95	<b>H220-41800-477N1</b> <sup>1</sup>
	25	7.5	5.5	250 × 160 × 95	<b>H220-41800-467N1</b> <sup>1</sup> (w/o N-terminal)
	32	11	7.5	250 × 160 × 95	<b>H226-41800-477N1</b> <sup>1</sup>
	32	11	7.5	250 × 160 × 95	<b>H226-41800-467N1</b> <sup>1</sup> (w/o N-terminal)
	40	15	11	250 × 160 × 95	<b>H233-41800-477N1</b> <sup>1</sup>
40	15	11	250 × 160 × 95	<b>H233-41800-467N1</b> <sup>1</sup> (w/o N-terminal)	

<sup>1</sup> Without cover interlock

Further switching programmes please see Main Catalogue.

### Dimensions in mm:

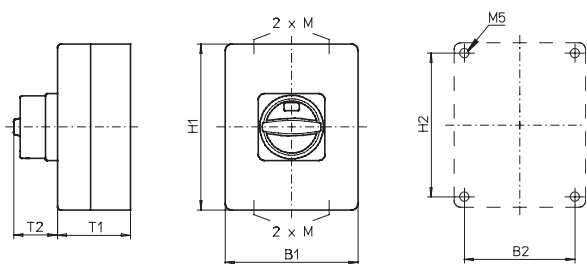
Setup of order code number		
Type	Switching progr.	Mtg. form
H406	41400	177N1
Order code no.	<b>H406-41400-177N1</b>	



Insulated enclosures **100 × 80 × 65 mm / 125 × 100 × 85 mm / 250 × 160 × 95 mm:**

Types H212 / H216 / H220 / H226 / H406 / H408 / H410 / H412:

Mounting form	H1	B1	T1	T2	2×M	H2
077N1	100	80	65	33	20	90
700N1	125	100	85	33	20/25	115
177N1	250	160	95	45	25/32	240
467N1	250	160	95	33	25/32	240
477N1	250	160	95	33	25/32	240



Insulated enclosure **320 × 220 × 180 mm:**

Types H216 / H220 / H226 / H233 / H406 / H408 / H410 / H412:

Mounting form	H1	B1	T1	T2	H2	B2
461N1	320	220	180	45	293	193
471N1	320	220	180	45	293	193

# Changeover Switches

- Enclosed switches with insulated enclosure (polycarbonate)
- 2 up to 4 pole
- 20 A up to 40 A
- IP66



Switching programme	Rated data (IEC 60947)			Enclosure dimension (H x W x D) (mm)	Padlockable handle V-handle silver/black	Padlockable handle V-handle silver/black
	Operat. current $I_c$	Operational power (at 380–440 V)			 OFF position padlockable IP66	 all positions padlockable IP66
	AC-21A (A)	AC-23A (kW)	AC-3 (kW)		Order code number	Order code number
<b>71200</b> – 2 pole – without auxiliary contacts 	20	5.5	3.7	250 x 160 x 95	<b>H216-71200-476V1</b>	<b>H216-71200-478V1</b>
	20	5.5	3.7	250 x 160 x 95	<b>H216-71200-466V1</b> (w/o N-terminal)	<b>H216-71200-468V1</b> (w/o N-terminal)
	25	7.5	5.5	250 x 160 x 95	<b>H220-71200-476V1</b>	<b>H220-71200-478V1</b>
	25	7.5	5.5	250 x 160 x 95	<b>H220-71200-466V1</b> (w/o N-terminal)	<b>H220-71200-468V1</b> (w/o N-terminal)
	32	11	7.5	250 x 160 x 95	<b>H226-71200-476V1</b>	<b>H226-71200-478V1</b>
	32	11	7.5	250 x 160 x 95	<b>H226-71200-466V1</b> (w/o N-terminal)	<b>H226-71200-468V1</b> (w/o N-terminal)
	40	15	11	250 x 160 x 95	<b>H233-71200-476V1</b>	<b>H233-71200-478V1</b>
	40	15	11	250 x 160 x 95	<b>H233-71200-466V1</b> (w/o N-terminal)	<b>H233-71200-468V1</b> (w/o N-terminal)
<b>71300</b> – 3 pole – without auxiliary contacts 	20	5.5	3.7	250 x 160 x 95	<b>H216-71300-476V1</b>	<b>H216-71300-478V1</b>
	20	5.5	3.7	250 x 160 x 95	<b>H216-71300-466V1</b> (w/o N-terminal)	<b>H216-71300-468V1</b> (w/o N-terminal)
	25	7.5	5.5	250 x 160 x 95	<b>H220-71300-476V1</b>	<b>H220-71300-478V1</b>
	25	7.5	5.5	250 x 160 x 95	<b>H220-71300-466V1</b> (w/o N-terminal)	<b>H220-71300-468V1</b> (w/o N-terminal)
	32	11	7.5	250 x 160 x 95	<b>H226-71300-476V1</b>	<b>H226-71300-478V1</b>
	32	11	7.5	250 x 160 x 95	<b>H226-71300-466V1</b> (w/o N-terminal)	<b>H226-71300-468V1</b> (w/o N-terminal)
	40	15	11	250 x 160 x 95	<b>H233-71300-476V1</b>	<b>H233-71300-478V1</b>
	40	15	11	250 x 160 x 95	<b>H233-71300-466V1</b> (w/o N-terminal)	<b>H233-71300-468V1</b> (w/o N-terminal)
<b>71500</b> – 4 pole – without auxiliary contacts – neutral contacts early make/late break – neutral jumper 	20	5.5	3.7	250 x 160 x 95	<b>H216-71500-476V1</b>	<b>H216-71500-478V1</b>
	20	5.5	3.7	250 x 160 x 95	<b>H216-71500-466V1</b> (w/o N-terminal)	<b>H216-71500-468V1</b> (w/o N-terminal)
	25	7.5	5.5	250 x 160 x 95	<b>H220-71500-476V1</b>	<b>H220-71500-478V1</b>
	25	7.5	5.5	250 x 160 x 95	<b>H220-71500-466V1</b> (w/o N-terminal)	<b>H220-71500-468V1</b> (w/o N-terminal)
	32	11	7.5	250 x 160 x 95	<b>H226-71500-476V1</b>	<b>H226-71500-478V1</b>
	32	11	7.5	250 x 160 x 95	<b>H226-71500-466V1</b> (w/o N-terminal)	<b>H226-71500-468V1</b> (w/o N-terminal)
	40	15	11	250 x 160 x 95	<b>H233-71500-476V1</b>	<b>H233-71500-478V1</b>
	40	15	11	250 x 160 x 95	<b>H233-71500-466V1</b> (w/o N-terminal)	<b>H233-71500-468V1</b> (w/o N-terminal)

Further switching programmes please see Main Catalogue.

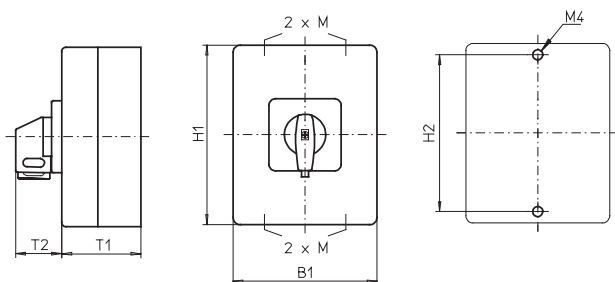
# Disconnect Switches

## Changeover Switches Enclosed Switches – Insulated Enclosure

Dimensions in mm:

### Setup of order code number

Type	Switching progr.	Mtg. form
H216	71300	476V1
Order code no.	<b>H216-71300-476V1</b>	



Insulated enclosure **250 × 160 × 95 mm**:

Types H216 / H220 / H226 / H233:


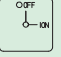
Mtg. form	H1	B1	T1	T2	2×M	H2
466V1	250	160	95	39	25/32	240
468V1	250	160	95	39	25/32	240
476V1	250	160	95	39	25/32	240
478V1	250	160	95	39	25/32	240



## Main/Emergency-Off Switches

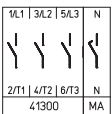
- Enclosed switches with mild steel enclosure (powder coated – RAL 7035)
- Cover interlock in ON position
- 2 up to 8 pole
- 20 A up to 125 A
- IP66



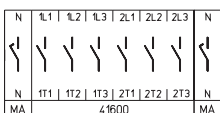
Switching programme	Rated data (IEC 60947)			Enclosure dimension (H x W x D) (mm)	Padlock device N-handle yellow/red   IP66
	Operat. current I <sub>e</sub>	Operational power (at 380–440 V)			
	AC-21A (A)	AC-23A (kW)	AC-3 (kW)		
<b>41200</b> – 2 pole – without auxiliary contacts	20	5.5	3.7	150 × 150 × 120	<b>H216-41200-587N4</b> (w/o N-terminal)
	25	7.5	5.5	150 × 150 × 120	<b>H220-41200-587N4</b> (w/o N-terminal)
	32	11	7.5	150 × 150 × 120	<b>H226-41200-587N4</b> (w/o N-terminal)



<b>41400</b> – 4 pole – without auxiliary contacts – neutral contact early make/late break	20	5.5	3.7	150 × 150 × 120	<b>H216-41400-587N4</b> (w/o N-terminal)
	20	5.5	3.7	200 × 150 × 120	<b>H216-41400-687N4</b> (w/o N-terminal)
	25	7.5	5.5	150 × 150 × 120	<b>H220-41400-587N4</b> (w/o N-terminal)
	25	7.5	5.5	200 × 150 × 120	<b>H220-41400-687N4</b> (w/o N-terminal)
	32	11	7.5	150 × 150 × 120	<b>H226-41400-587N4</b> (w/o N-terminal)
	32	11	7.5	200 × 150 × 120	<b>H226-41400-687N4</b> (w/o N-terminal)
	40	15	11	300 × 250 × 150	<b>H233-41400-687N4</b> (w/o N-terminal)
	63	22	18,5	300 × 250 × 150	<b>H406-41400-687N4</b> (w/o N-terminal)
	80	30	22	300 × 250 × 150	<b>H408-41400-687N4</b> (w/o N-terminal)
	100	37	30	300 × 250 × 150	<b>H410-41400-687N4</b> (w/o N-terminal)
125	45	37	300 × 250 × 150	<b>H412-41400-687N4</b> (w/o N-terminal)	



<b>41800</b> – 8 pole – without auxiliary contacts – 2 neutral contacts early make/late break	20	5.5	3.7	200 × 150 × 120	<b>H216-41800-687N4</b> (w/o N-terminal)
	25	7.5	5.5	200 × 150 × 120	<b>H220-41800-687N4</b> (w/o N-terminal)
	32	11	7.5	200 × 150 × 120	<b>H226-41800-687N4</b> (w/o N-terminal)
	40	15	11	300 × 250 × 150	<b>H233-41800-687N4</b> (w/o N-terminal)
	63	22	18,5	300 × 250 × 150	<b>H406-41800-687N4</b> (w/o N-terminal)
	80	30	22	300 × 250 × 150	<b>H408-41800-687N4</b> (w/o N-terminal)
	100	37	30	300 × 250 × 150	<b>H410-41800-687N4</b> (w/o N-terminal)
	125	45	37	300 × 250 × 150	<b>H412-41800-687N4</b> (w/o N-terminal)



Further switching programmes please see Main Catalogue.

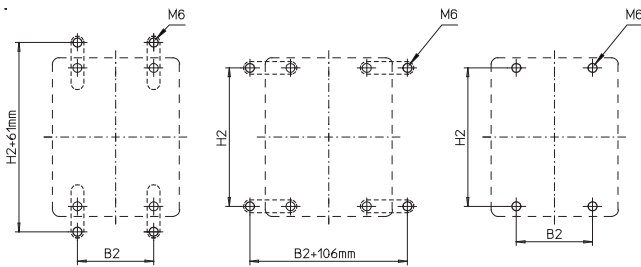
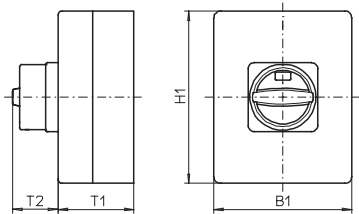
# Disconnect Switches

Main/Emergency-Off Switches Enclosed Switches – Mild Steel Enclosure

Dimensions in mm:

### Setup of order code number

Type	Switching progr.	Mtg. form
H216	41400	587N4
Order code no.	<b>H216-41400-587N4</b>	



Please order mounting brackets separately.

Mild steel enclosures **150 × 150 × 120 mm / 200 × 150 × 120 mm / 300 × 250 × 150 mm:**

Types H216 / H220 / H226 / H233:

Mtg. form	H1	B1	T1	T2	H2	B2
587N4	150	150	120	33	132	85
687N4	200	150	120	33	182	85

Types H406 / H408 / H410 / H412:

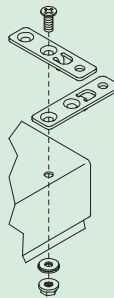
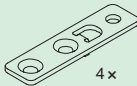
Mtg. form	H1	B1	T1	T2	H2	B2
687N4	300	250	150	45	282	185

Mounting brackets for external mounting of enclosures (1 complete set):

M6 × 16



mounting bracket



Enclosure

Dimensions

Order code number

Sheet metal enclosure  
Sheet metal enclosure  
Sheet metal enclosure

150 × 150 × 120 mm  
200 × 150 × 120 mm  
300 × 250 × 120 mm

**SAX1**  
**SAX1**  
**SAX1**

Stainless steel enclosure  
Stainless steel enclosure  
Stainless steel enclosure


150 × 150 × 120 mm  
200 × 150 × 120 mm  
300 × 250 × 120 mm

**SBX1**  
**SBX1**  
**SBX1**

## Main/Emergency-Off Switches

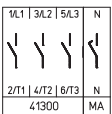
- Enclosed switches with mild steel enclosure (powder coated – RAL 7035)
- Cover interlock in ON position
- 2 up to 8 pole
- 20 A up to 125 A
- IP66



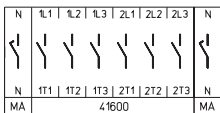
Switching programme	Rated data (IEC 60947)			Enclosure dimension (H x W x D) (mm)	Padlock device N-handle black
	Operat. current $I_e$	Operational power (at 380–440 V)			 IP66
	AC-21A (A)	AC-23A (kW)	AC-3 (kW)		Order code number
<b>41200</b> – 2 pole – without auxiliary contacts	20	5.5	3.7	150 x 150 x 120	<b>H216-41200-587N1</b> (w/o N-terminal)
	25	7.5	5.5	150 x 150 x 120	<b>H220-41200-587N1</b> (w/o N-terminal)
	32	11	7.5	150 x 150 x 120	<b>H226-41200-587N1</b> (w/o N-terminal)



<b>41400</b> – 4 pole – without auxiliary contacts – neutral contact early make/late break	20	5.5	3.7	150 x 150 x 120	<b>H216-41400-587N1</b> (w/o N-terminal)
	20	5.5	3.7	200 x 150 x 120	<b>H216-41400-687N1</b> (w/o N-terminal)
	25	7.5	5.5	150 x 150 x 120	<b>H220-41400-587N1</b> (w/o N-terminal)
	25	7.5	5.5	200 x 150 x 120	<b>H220-41400-687N1</b> (w/o N-terminal)
	32	11	7.5	150 x 150 x 120	<b>H226-41400-587N1</b> (w/o N-terminal)
	32	11	7.5	200 x 150 x 120	<b>H226-41400-687N1</b> (w/o N-terminal)
	40	15	11	300 x 250 x 150	<b>H233-41400-687N1</b> (w/o N-terminal)
	63	22	18,5	300 x 250 x 150	<b>H406-41400-687N1</b> (w/o N-terminal)
	80	30	22	300 x 250 x 150	<b>H408-41400-687N1</b> (w/o N-terminal)
	100	37	30	300 x 250 x 150	<b>H410-41400-687N1</b> (w/o N-terminal)
	125	45	37	300 x 250 x 150	<b>H412-41400-687N1</b> (w/o N-terminal)



<b>41800</b> – 8 pole – without auxiliary contacts – 2 neutral contacts early make/late break	20	5.5	3.7	200 x 150 x 120	<b>H216-41800-687N1</b> (w/o N-terminal)
	25	7.5	5.5	200 x 150 x 120	<b>H220-41800-687N1</b> (w/o N-terminal)
	32	11	7.5	200 x 150 x 120	<b>H226-41800-687N1</b> (w/o N-terminal)
	40	15	11	300 x 250 x 150	<b>H233-41800-687N1</b> (w/o N-terminal)
	63	22	18,5	300 x 250 x 150	<b>H406-41800-687N1</b> (w/o N-terminal)
	80	30	22	300 x 250 x 150	<b>H408-41800-687N1</b> (w/o N-terminal)
	100	37	30	300 x 250 x 150	<b>H410-41800-687N1</b> (w/o N-terminal)
	125	45	37	300 x 250 x 150	<b>H412-41800-687N1</b> (w/o N-terminal)



Further switching programmes please see Main Catalogue.

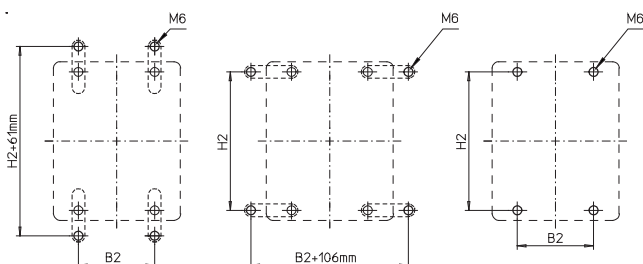
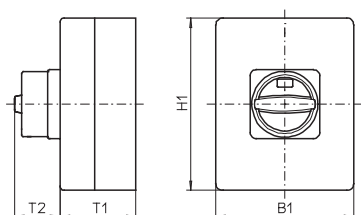
# Disconnect Switches

## Main Switches Enclosed Switches – Mild Steel Enclosure

Dimensions in mm:

### Setup of order code number

Type	Switching progr.	Mtg. form
H216	41400	587N1
Order code no.	<b>H216-41400-587N1</b>	



Please order mounting brackets separately.

Mild steel enclosures **150 × 150 × 120 mm / 200 × 150 × 120 mm / 300 × 250 × 150 mm:**

Types H216 / H220 / H226 / H233:

Mtg. form	H1	B1	T1	T2	H2	B2
587N1	150	150	120	33	132	85
687N1	200	150	120	33	182	85

Types H406 / H408 / H410 / H412:

Mtg. form	H1	B1	T1	T2	H2	B2
687N1	300	250	150	45	282	185

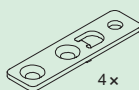
**Mounting brackets** for external mounting of enclosures (1 complete set):

M6 × 16



4 x

mounting bracket



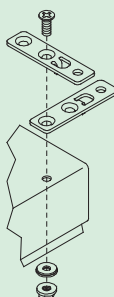
4 x



4 x



4 x



Enclosure

Dimensions

Order code number

Sheet metal enclosure

150 × 150 × 120 mm

**SAX1**

Sheet metal enclosure

200 × 150 × 120 mm

**SAX1**

Sheet metal enclosure

300 × 250 × 120 mm

**SAX1**

Stainless steel enclosure

150 × 150 × 120 mm

**SBX1**

Stainless steel enclosure

200 × 150 × 120 mm

**SBX1**

Stainless steel enclosure

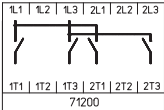

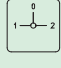

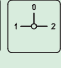
300 × 250 × 120 mm


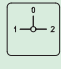

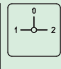
**SBX1**

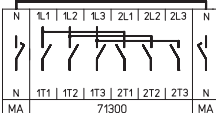

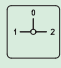

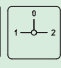
# Changeover Switches


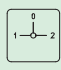

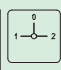
- Enclosed switches with mild steel enclosure (powder coated – RAL 7035)
- Cover interlock in position 1 and 2
- 2 up to 4 pole
- 20 A up to 125 A
- IP66



Switching programme	Rated data (IEC 60947)			Enclosure dimension (H x W x D) (mm)	Padlockable handle V-handle silver/black		Padlockable handle V-handle silver/black	
	Operat. current $I_e$ (A)	Operational power (at 380–440 V) (kW)			OFF position padlockable	all position padlockable		
<b>71200</b> – 2 pole – without auxiliary contacts 	20	5.5	3.7	200 x 150 x 120	 	 	IP66	IP66
	<b>Order code number</b>						<b>Order code number</b>	
	25	7.5	5.5	200 x 150 x 120	H216-71200-686V1 (w/o N-terminal)		H216-71200-688V1 (w/o N-terminal)	
	32	11	7.5	200 x 150 x 120	H220-71200-686V1 (w/o N-terminal)		H220-71200-688V1 (w/o N-terminal)	
40	15	11	200 x 150 x 120	H226-71200-686V1 (w/o N-terminal)		H226-71200-688V1 (w/o N-terminal)		
40	15	11	200 x 150 x 120	H233-71200-686V1 (w/o N-terminal)		H233-71200-688V1 (w/o N-terminal)		

Rated data (IEC 60947)	Enclosure dimension (H x W x D) (mm)	Padlock device H-handle silver/black		Padlock device H-handle silver/black	
		OFF position padlockable	all position padlockable	OFF position padlockable	all position padlockable
Operat. current $I_e$ (A) AC-21A (A) AC-23A (kW) AC-3 (kW)	300 x 250 x 150	 	 	IP66	IP66
<b>Order code number</b>		<b>Order code number</b>			
63	22	18.5	H406-71200-686H1 (w/o N-terminal)		H406-71200-689H1 (w/o N-terminal)
80	30	22	H408-71200-686H1 (w/o N-terminal)		H408-71200-689H1 (w/o N-terminal)
100	37	30	H410-71200-686H1 (w/o N-terminal)		H410-71200-689H1 (w/o N-terminal)
125	45	37	H412-71200-686H1 (w/o N-terminal)		H412-71200-689H1 (w/o N-terminal)

Switching programme	Rated data (IEC 60947)			Enclosure dimension (H x W x D) (mm)	Padlockable handle V-handle silver/black		Padlockable handle V-handle silver/black	
	Operat. current $I_e$ (A)	Operational power (at 380–440 V) (kW)			OFF position padlockable	all position padlockable		
<b>71500</b> – 4 pole – without auxiliary contacts – neutral contacts – early make/late break – neutral jumper 	20	5.5	3.7	200 x 150 x 120	 	 	IP66	IP66
	<b>Order code number</b>						<b>Order code number</b>	
	25	7.5	5.5	200 x 150 x 120	H216-71500-686V1 (w/o N-terminal)		H216-71500-688V1 (w/o N-terminal)	
	32	11	7.5	200 x 150 x 120	H220-71500-686V1 (w/o N-terminal)		H220-71500-688V1 (w/o N-terminal)	
40	15	11	200 x 150 x 120	H226-71500-686V1 (w/o N-terminal)		H226-71500-688V1 (w/o N-terminal)		
40	15	11	200 x 150 x 120	H233-71500-686V1 (w/o N-terminal)		H233-71500-688V1 (w/o N-terminal)		

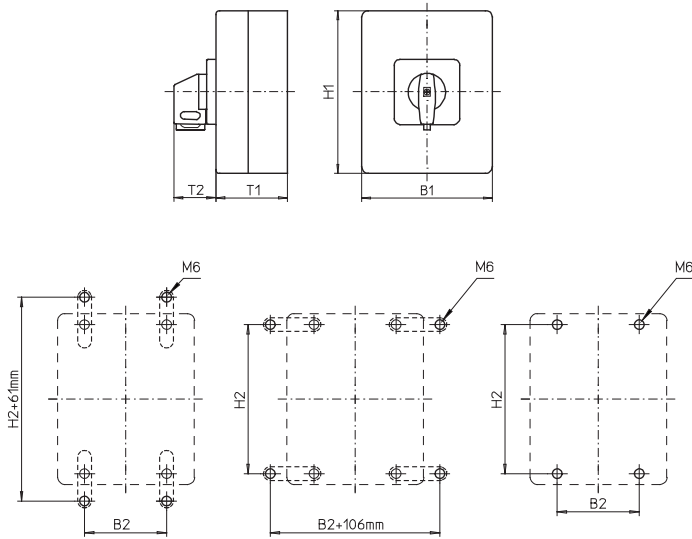
Rated data (IEC 60947)	Enclosure dimension (H x W x D) (mm)	Padlock device H-handle silver/black		Padlock device H-handle silver/black	
		OFF position padlockable	all position padlockable	OFF position padlockable	all position padlockable
Operat. current $I_e$ (A) AC-21A (A) AC-23A (kW) AC-3 (kW)	300 x 250 x 150	 	 	IP66	IP66
<b>Order code number</b>		<b>Order code number</b>			
63	22	18.5	H406-71500-686H1 (w/o N-terminal)		H406-71500-689H1 (w/o N-terminal)
80	30	22	H408-71500-686H1 (w/o N-terminal)		H408-71500-689H1 (w/o N-terminal)
100	37	30	H410-71500-686H1 (w/o N-terminal)		H410-71500-689H1 (w/o N-terminal)
125	45	37	H412-71500-686H1 (w/o N-terminal)		H412-71500-689H1 (w/o N-terminal)

# Disconnect Switches

Changeover Switches Enclosed Switches – Mild Steel Enclosure

Dimensions in mm:

Setup of order code number		
Type	Switching progr.	Mtg. form
H226	71200	686V1
Order code no.	<b>H226-71200-686V1</b>	



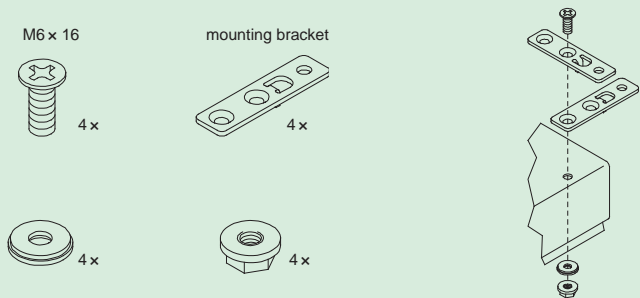
Mild steel enclosure **200 × 150 × 120 mm**  
and **300 × 250 × 150 mm**:

Types H216 / H220 / H226 / H233 /  
H406 / H408 / H410 / H412:

Mtg. form	H1	B1	T1	T2	H2	B2
686V1	200	150	120	39	182	85
688V1	200	150	120	39	182	85
686H1	300	250	150	83	282	185
689H1	300	250	150	83	282	185

Please order mounting brackets separately.

Mounting brackets for external mounting of enclosures (1 complete set):




Enclosure	Dimensions	Order code number
Sheet metal enclosure	150 × 150 × 120 mm	<b>SAX1</b>
Sheet metal enclosure	200 × 150 × 120 mm	<b>SAX1</b>
Sheet metal enclosure	300 × 250 × 120 mm	<b>SAX1</b>
Stainless steel enclosure	150 × 150 × 120 mm	<b>SBX1</b>
Stainless steel enclosure	200 × 150 × 120 mm	<b>SBX1</b>
Stainless steel enclosure	300 × 250 × 120 mm	<b>SBX1</b>

## Main/Emergency-Off Switches

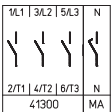
- Enclosed switches with stainless steel enclosure (brushed)
- Cover interlock in ON position
- 2 up to 8 pole
- 20 A up to 125 A
- IP66



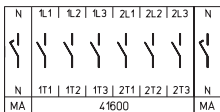
Switching programme	Rated data (IEC 60947)			Enclosure dimension (H × W × D) (mm)	Padlock device N-handle yellow/red  OFF-ON IP66
	Operat. current $I_c$	Operational power (at 380–440 V)			
	AC-21A (A)	AC-23A (kW)	AC-3 (kW)		Order code number
<b>41200</b> – 2 pole – without auxiliary contacts	20	5.5	3.7	150 × 150 × 120	<b>H216-41200-597N4</b> (w/o N-terminal)
	25	7.5	5.5	150 × 150 × 120	<b>H220-41200-597N4</b> (w/o N-terminal)
	32	11	7.5	150 × 150 × 120	<b>H226-41200-597N4</b> (w/o N-terminal)



<b>41400</b> – 4 pole – without auxiliary contacts – neutral contact early make/late break	20	5.5	3.7	150 × 150 × 120	<b>H216-41400-597N4</b> (w/o N-terminal)
	25	7.5	5.5	150 × 150 × 120	<b>H220-41400-597N4</b> (w/o N-terminal)
	32	11	7.5	150 × 150 × 120	<b>H226-41400-597N4</b> (w/o N-terminal)
	63	22	18.5	300 × 250 × 150	<b>H406-41400-697N4</b> (w/o N-terminal)
	80	30	22	300 × 250 × 150	<b>H408-41400-697N4</b> (w/o N-terminal)
	100	37	30	300 × 250 × 150	<b>H410-41400-697N4</b> (w/o N-terminal)
125	45	37	300 × 250 × 150	<b>H412-41400-697N4</b> (w/o N-terminal)	



<b>41800</b> – 8 pole – without auxiliary contacts – 2 neutral contacts early make/late break	63	22	18.5	300 × 250 × 150	<b>H406-41800-697N4</b> (w/o N-terminal)
	80	30	22	300 × 250 × 150	<b>H408-41800-697N4</b> (w/o N-terminal)
	100	37	30	300 × 250 × 150	<b>H410-41800-697N4</b> (w/o N-terminal)
	125	45	37	300 × 250 × 150	<b>H412-41800-697N4</b> (w/o N-terminal)



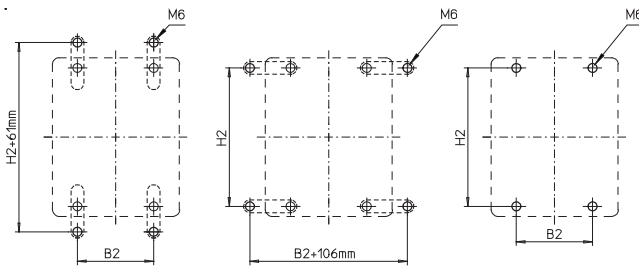
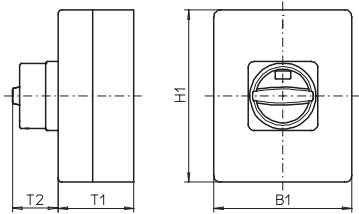
Further switching programmes please see Main Catalogue.

# Disconnect Switches

Main/Emergency-Off Switches Enclosed Switches – Stainless Steel Enclosure

Dimensions in mm:

Setup of order code number		
Type	Switching progr.	Mtg. form
H216	41400	597N4
Order code no.	<b>H216-41400-597N4</b>	



Please order mounting brackets separately.

Stainless steel enclosures **150 × 150 × 120 mm / 300 × 250 × 150 mm:**

Types H216 / H220 / H226 / H406 / H408 / H410 / H412:

Mtg. form	H1	B1	T1	T2	H2	B2
597N4	150	150	120	33	132	85
697N4	300	250	150	45	282	185

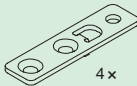
Mounting brackets for external mounting of enclosures (1 complete set):

M6 × 16



4 x

mounting bracket



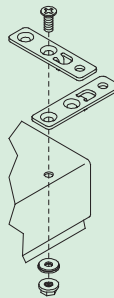
4 x



4 x



4 x



Enclosure

Dimensions

Order code number

Sheet metal enclosure  
Sheet metal enclosure  
Sheet metal enclosure

150 × 150 × 120 mm  
200 × 150 × 120 mm  
300 × 250 × 120 mm

**SAX1**  
**SAX1**  
**SAX1**

Stainless steel enclosure  
Stainless steel enclosure  
Stainless steel enclosure

150 × 150 × 120 mm  
200 × 150 × 120 mm  
300 × 250 × 120 mm


**SBX1**  
**SBX1**  
**SBX1**

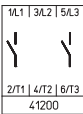


## Main Switches

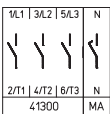
- Enclosed switches with stainless steel enclosure (brushed)
- Cover interlock in ON position
- 2 up to 8 pole
- 20 A up to 125 A
- IP66



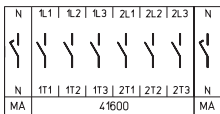
Switching programme	Rated data (IEC 60947)			Enclosure dimension (H x W x D) (mm)	Padlock device N-handle black  IP66
	Operat. current I <sub>c</sub>	Operational power (at 380–440 V)			
	AC-21A (A)	AC-23A (kW)	AC-3 (kW)		
<b>41200</b> – 2 pole – without auxiliary contacts	20	5.5	3.7	150 × 150 × 120	<b>H216-41200-597N1</b> (w/o N-terminal)
	25	7.5	5.5	150 × 150 × 120	<b>H220-41200-597N1</b> (w/o N-terminal)
	32	11	7.5	150 × 150 × 120	<b>H226-41200-597N1</b> (w/o N-terminal)



<b>41400</b> – 4 pole – without auxiliary contacts – neutral contact early make/late break	20	5.5	3.7	150 × 150 × 120	<b>H216-41400-597N1</b> (w/o N-terminal)
	25	7.5	5.5	150 × 150 × 120	<b>H220-41400-597N1</b> (w/o N-terminal)
	32	11	7.5	150 × 150 × 120	<b>H226-41400-597N1</b> (w/o N-terminal)
	63	22	18.5	300 × 250 × 150	<b>H406-41400-697N1</b> (w/o N-terminal)
	80	30	22	300 × 250 × 150	<b>H408-41400-697N1</b> (w/o N-terminal)
	100	37	30	300 × 250 × 150	<b>H410-41400-697N1</b> (w/o N-terminal)
125	45	37	300 × 250 × 150	<b>H412-41400-697N1</b> (w/o N-terminal)	



<b>41800</b> – 8 pole – without auxiliary contacts – 2 neutral contacts early make/late break	63	22	18.5	300 × 250 × 150	<b>H406-41800-697N1</b> (w/o N-terminal)
	80	30	22	300 × 250 × 150	<b>H408-41800-697N1</b> (w/o N-terminal)
	100	37	30	300 × 250 × 150	<b>H410-41800-697N1</b> (w/o N-terminal)
	125	45	37	300 × 250 × 150	<b>H412-41800-697N1</b> (w/o N-terminal)



Further switching programmes please see Main Catalogue.

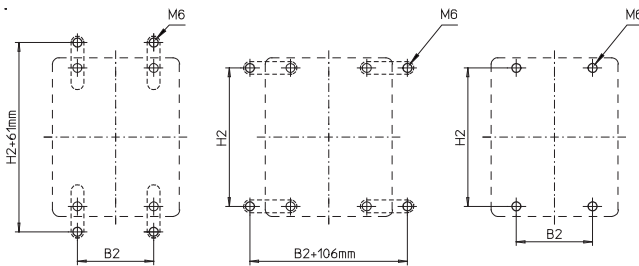
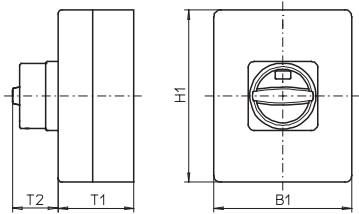
# Disconnect Switches

## Main Switches Enclosed Switches – Stainless Steel Enclosure

Dimensions in mm:

### Setup of order code number

Type	Switching progr.	Mtg. form
H216	41400	597N1
Order code no.	<b>H216-41400-597N1</b>	



Please order mounting brackets separately.

Stainless steel enclosures **150 × 150 × 120 mm / 300 × 250 × 150 mm:**

Types H216 / H220 / H226 / H406 / H408 / H410 / H412:

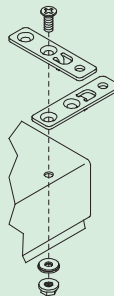
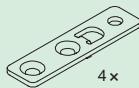
Mtg. form	H1	B1	T1	T2	H2	B2
597N1	150	150	120	33	132	85
697N1	300	250	150	45	282	185

**Mounting brackets** for external mounting of enclosures (1 complete set):

M6 × 16



mounting bracket



Enclosure

Dimensions



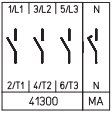
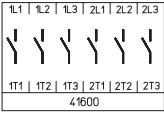
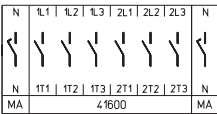
Order code number

Sheet metal enclosure	150 × 150 × 120 mm	<b>SAX1</b>
Sheet metal enclosure	200 × 150 × 120 mm	<b>SAX1</b>
Sheet metal enclosure	300 × 250 × 120 mm	<b>SAX1</b>
Stainless steel enclosure	150 × 150 × 120 mm	<b>SBX1</b>
Stainless steel enclosure	200 × 150 × 120 mm	<b>SBX1</b>
Stainless steel enclosure	300 × 250 × 120 mm	<b>SBX1</b>

## Main/Emergency-Off Switches

- Base mounting switches with snap-on mounting
- Defeatable door interlock
- 3 up to 8 pole
- 63 A up to 125 A
- Metal shaft extension
- Single hole front mounting
- **IP66**



Switching programme	Rated data (IEC 60947)			Mounting dimension (front) (mm)	Padlockable handle D-handle yellow/red  IP66
	Operat. current $I_c$	Operational power (at 380–440 V)			
	AC-21A (A)	AC-23A (kW)	AC-3 (kW)		
<b>41300</b> – 3 pole – without auxiliary contacts  	63	22	18,5	∅ 22.5	<b>H406-41300-380D4</b>
	80	30	22	∅ 22.5	<b>H408-41300-380D4</b>
	100	37	30	∅ 22.5	<b>H410-41300-380D4</b>
	125	45	37	∅ 22.5	<b>H412-41300-380D4</b>
<b>41400</b> – 4 pole – without auxiliary contacts – neutral contact early make/late break  	63	22	18,5	∅ 22.5	<b>H406-41400-380D4</b>
	80	30	22	∅ 22.5	<b>H408-41400-380D4</b>
	100	37	30	∅ 22.5	<b>H410-41400-380D4</b>
	125	45	37	∅ 22.5	<b>H412-41400-380D4</b>
<b>41600</b> – 6 pole – without auxiliary contacts  	63	22	18,5	∅ 22.5	<b>H406-41600-380D4</b>
	80	30	22	∅ 22.5	<b>H408-41600-380D4</b>
	100	37	30	∅ 22.5	<b>H410-41600-380D4</b>
	125	45	37	∅ 22.5	<b>H412-41600-380D4</b>
<b>41800</b> – 8 pole – without auxiliary contacts – 2 neutral contacts early make/late break  	63	22	18,5	∅ 22.5	<b>H406-41800-380D4</b>
	80	30	22	∅ 22.5	<b>H408-41800-380D4</b>
	100	37	30	∅ 22.5	<b>H410-41800-380D4</b>
	125	45	37	∅ 22.5	<b>H412-41800-380D4</b>

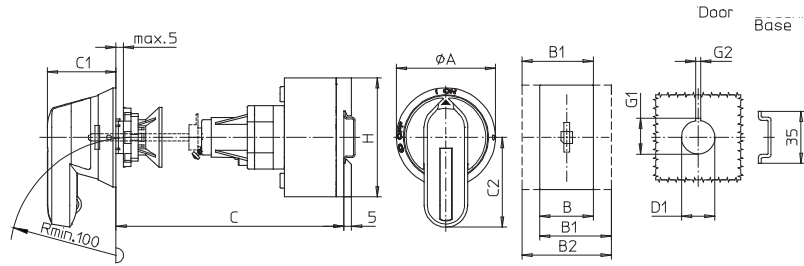
Further switching programmes please see Main Catalogue.

# Disconnect Switches

Main/Emergency-Off Switches **Base mounting** Snap-on mounting with defeatable door interlock

Dimensions in mm:

Setup of order code number		
Type	Switching progr.	Mtg. form
H406	41800	380D4
Order code no.	<b>H406-41800-380D4</b>	



## Switching programmes 3 and 4 pole

Types H406 / H408 / H410 / H412:

Mtg. form	A	B	B1	B2	C1	C2	D1	G1	G2	H
380D4	66,5	70	89	108	46	60	22,5	24,2	3,2	80

## Switching programmes 6 and 8 pole

Types H406 / H408 / H410 / H412:

Mtg. form	A	B	B1	B2	C1	C2	D1	G1	G2	H
380D4	66,5	140	159	178	46	60	22,5	24,2	3,2	80

**Metal shaft extension** for mounting forms with defeatable door interlock (please order separately!)

For switches with **metal shaft extension** the metal shaft is not included in the scope of delivery and has to be ordered separately.

### H400

3...4 pole Main/Emergency-Off Switches  
3...4 pole Main Switches

### H400

6...8 pole Main/Emergency-Off Switches  
6...8 pole Main Switches

### Order code number

#### Single hole mounting $\varnothing$ 22.5 mm front

Dimension C (internal depth: outside of door to top of DIN rail):

133 ... 148 mm  
148 ... 163 mm  
163 ... 178 mm  
178 ... 193 mm  
193 ... 208 mm

208 ... 223 mm  
223 ... 238 mm  
238 ... 253 mm  
253 ... 268 mm  
268 ... 283 mm

283 ... 298 mm  
298 ... 313 mm  
313 ... 328 mm  
328 ... 343 mm  
343 ... 358 mm

358 ... 373 mm  
373 ... 388 mm  
388 ... 403 mm  
403 ... 418 mm  
418 ... 433 mm

433 ... 448 mm  
448 ... 463 mm  
463 ... 478 mm  
478 ... 493 mm  
493 ... 508 mm

508 ... 523 mm  
523 ... 538 mm  
538 ... 553 mm  
553 ... 568 mm  
568 ... 583 mm

583 ... 598 mm  
598 ... 613 mm  
613 ... 628 mm

146 ... 161 mm  
161 ... 176 mm  
176 ... 191 mm  
191 ... 206 mm  
206 ... 221 mm

221 ... 236 mm  
236 ... 251 mm  
251 ... 266 mm  
266 ... 281 mm  
281 ... 296 mm

296 ... 311 mm  
311 ... 326 mm  
326 ... 341 mm  
341 ... 356 mm  
356 ... 371 mm

371 ... 386 mm  
386 ... 401 mm  
401 ... 416 mm  
416 ... 431 mm  
431 ... 446 mm

446 ... 461 mm  
461 ... 476 mm  
476 ... 491 mm  
491 ... 506 mm  
506 ... 521 mm

521 ... 536 mm  
536 ... 551 mm  
551 ... 566 mm  
566 ... 581 mm  
581 ... 596 mm

596 ... 611 mm  
611 ... 626 mm  
626 ... 641 mm

**AVE5-088**  
**AVE5-103**  
**AVE5-118**  
**AVE5-133**  
**AVE5-148**

**AVE5-163**  
**AVE5-178**  
**AVE5-193**  
**AVE5-208**  
**AVE5-223**

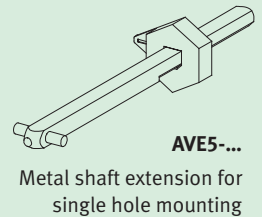
**AVE5-238**  
**AVE5-253**  
**AVE5-268**  
**AVE5-283**  
**AVE5-298**

**AVE5-313**  
**AVE5-328**  
**AVE5-343**  
**AVE5-358**  
**AVE5-373**

**AVE5-388**  
**AVE5-403**  
**AVE5-418**  
**AVE5-433**  
**AVE5-448**

**AVE5-463**  
**AVE5-478**  
**AVE5-493**  
**AVE5-508**  
**AVE5-523**


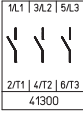
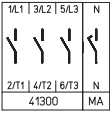
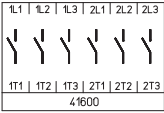
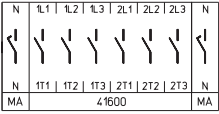
**AVE5-538**  
**AVE5-553**  
**AVE5-568**



## Main Switches

- Base mounting switches with snap-on mounting
- Defeatable door interlock
- 3 up to 8 pole
- 63 A up to 125 A
- Metal shaft extension
- Single hole front mounting
- **IP66**



Switching programme	Rated data (IEC 60947)			Mounting dimension (front) (mm)	Padlockable handle D-handle yellow/black  IP66
	Operat. current $I_c$	Operational power (at 380–440 V)			
	AC-21A (A)	AC-23A (kW)	AC-3 (kW)		
<b>41300</b> – 3 pole – without auxiliary contacts  	63	22	18,5	∅ 22.5	<b>H406-41300-380D1</b>
	80	30	22	∅ 22.5	<b>H408-41300-380D1</b>
	100	37	30	∅ 22.5	<b>H410-41300-380D1</b>
	125	45	37	∅ 22.5	<b>H412-41300-380D1</b>
<b>41400</b> – 4 pole – without auxiliary contacts – neutral contact early make/late break  	63	22	18,5	∅ 22.5	<b>H406-41400-380D1</b>
	80	30	22	∅ 22.5	<b>H408-41400-380D1</b>
	100	37	30	∅ 22.5	<b>H410-41400-380D1</b>
	125	45	37	∅ 22.5	<b>H412-41400-380D1</b>
<b>41600</b> – 6 pole – without auxiliary contacts  	63	22	18,5	∅ 22.5	<b>H406-41600-380D1</b>
	80	30	22	∅ 22.5	<b>H408-41600-380D1</b>
	100	37	30	∅ 22.5	<b>H410-41600-380D1</b>
	125	45	37	∅ 22.5	<b>H412-41600-380D1</b>
<b>41800</b> – 8 pole – without auxiliary contacts – 2 neutral contacts early make/late break  	63	22	18,5	∅ 22.5	<b>H406-41800-380D1</b>
	80	30	22	∅ 22.5	<b>H408-41800-380D1</b>
	100	37	30	∅ 22.5	<b>H410-41800-380D1</b>
	125	45	37	∅ 22.5	<b>H412-41800-380D1</b>

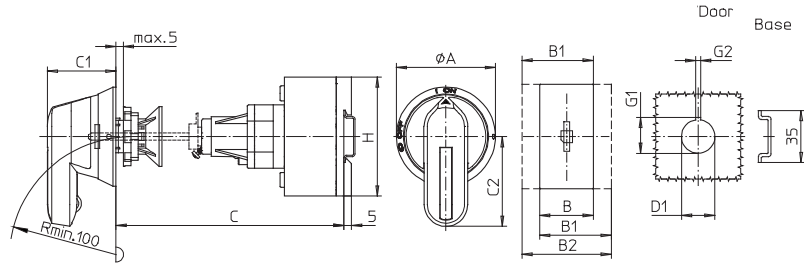
Further switching programmes please see Main Catalogue.

# Disconnect Switches

Main/Emergency-Off Switches **Base mounting** Snap-on mounting with defeatable door interlock

Dimensions in mm:

Setup of order code number		
Type	Switching progr.	Mtg. form
H406	41800	380D1
Order code no.	<b>H406-41800-380D1</b>	



## Switching programmes 3 and 4 pole

Types H406 / H408 / H410 / H412:

Mtg. form	A	B	B1	B2	C1	C2	D1	G1	G2	H
380D1	66,5	70	89	108	46	60	22,5	24,2	3,2	80

## Switching programmes 6 and 8 pole

Types H406 / H408 / H410 / H412:

Mtg. form	A	B	B1	B2	C1	C2	D1	G1	G2	H
380D1	66,5	140	159	178	46	60	22,5	24,2	3,2	80

**Metal shaft extension** for mounting forms with defeatable door interlock (please order separately!)

For switches with **metal shaft extension** the metal shaft is not included in the scope of delivery and has to be ordered separately.

### H400

3...4 pole Main/Emergency-Off Switches  
3...4 pole Main Switches

### H400

6...8 pole Main/Emergency-Off Switches  
6...8 pole Main Switches

### Order code number

#### Single hole mounting $\varnothing$ 22.5 mm front

Dimension C (internal depth: outside of door to top of DIN rail):

133 ... 148 mm  
148 ... 163 mm  
163 ... 178 mm  
178 ... 193 mm  
193 ... 208 mm

208 ... 223 mm  
223 ... 238 mm  
238 ... 253 mm  
253 ... 268 mm  
268 ... 283 mm

283 ... 298 mm  
298 ... 313 mm  
313 ... 328 mm  
328 ... 343 mm  
343 ... 358 mm

358 ... 373 mm  
373 ... 388 mm  
388 ... 403 mm  
403 ... 418 mm  
418 ... 433 mm

433 ... 448 mm  
448 ... 463 mm  
463 ... 478 mm  
478 ... 493 mm  
493 ... 508 mm

508 ... 523 mm  
523 ... 538 mm  
538 ... 553 mm  
553 ... 568 mm  
568 ... 583 mm

583 ... 598 mm  
598 ... 613 mm  
613 ... 628 mm

146 ... 161 mm  
161 ... 176 mm  
176 ... 191 mm  
191 ... 206 mm  
206 ... 221 mm

221 ... 236 mm  
236 ... 251 mm  
251 ... 266 mm  
266 ... 281 mm  
281 ... 296 mm

296 ... 311 mm  
311 ... 326 mm  
326 ... 341 mm  
341 ... 356 mm  
356 ... 371 mm

371 ... 386 mm  
386 ... 401 mm  
401 ... 416 mm  
416 ... 431 mm  
431 ... 446 mm

446 ... 461 mm  
461 ... 476 mm  
476 ... 491 mm  
491 ... 506 mm  
506 ... 521 mm

521 ... 536 mm  
536 ... 551 mm  
551 ... 566 mm  
566 ... 581 mm  
581 ... 596 mm

596 ... 611 mm  
611 ... 626 mm  
626 ... 641 mm

**AVE5-088**  
**AVE5-103**  
**AVE5-118**  
**AVE5-133**  
**AVE5-148**

**AVE5-163**  
**AVE5-178**  
**AVE5-193**  
**AVE5-208**  
**AVE5-223**

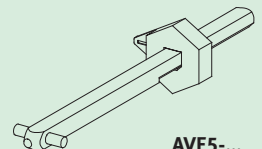
**AVE5-238**  
**AVE5-253**  
**AVE5-268**  
**AVE5-283**  
**AVE5-298**

**AVE5-313**  
**AVE5-328**  
**AVE5-343**  
**AVE5-358**  
**AVE5-373**

**AVE5-388**  
**AVE5-403**  
**AVE5-418**  
**AVE5-433**  
**AVE5-448**

**AVE5-463**  
**AVE5-478**  
**AVE5-493**  
**AVE5-508**  
**AVE5-523**

**AVE5-538**  
**AVE5-553**  
**AVE5-568**



**AVE5-...**  
Metal shaft extension for single hole mounting





Salzer UK Limited  
44 Edison Road  
Aylesbury Bucks.  
HP19 8TE

Telephone 01296 399992  
Ext. Sales Team 07836 380439  
Int. Sales Team 01296 392262  
Techn. Support 01296 392595  
Fax 01296 392229  
[info@salzeruk.co.uk](mailto:info@salzeruk.co.uk)

[www.salzeruk.co.uk](http://www.salzeruk.co.uk)