



# Metal Clad Consumer Units

for domestic household premises compliant to  
Reg. 421.1.201 of BS 7671 Amd 3



DESIGNED FOR **2015**

## The NEW AYXLM Metal Clad Range

This new range of Metalclad Consumer Units from Proteus Switchgear has been designed in conjunction with contractors and housing authorities specifically to meet the requirements of Regulation 421.1.201 of BS7671:2008 incorporating

Amendment 3:2015.

With its linear design and matt white (RAL9010) finish, the consumer unit offers the home owner a discreet and contemporary product, whilst providing suitable protection to meet today's need.

### 10 Reasons to choose Proteus

- 1 Increased height for added cabling space
- 2 Large rear knockouts with radius corners
- 3 Comb bus bar / Half Din Rail for quick fitting of devices
- 4 Steel cam lock with optional retrofit key lock
- 5 Captive screws with cage nut fixings
- 6 Full metal enclosure compliant to BS7671 Amendment 3:2015, Reg. 421.1.201
- 7 BS EN 61439-3 Compliant
- 8 Easy access for meter tail connections
- 9 Contemporary linear design
- 10 Bespoke consumer units made to order





## The NEW AYXLM Metal Clad Range

Regulation 421.1.201 calls for switchgear assemblies, including consumer units, to be housed in a non-combustible enclosure, incorporating the base, cover, door and any accessories.

The Proteus AYXLM range meets these requirements and offers additional features providing a more versatile product.



## Isolator Incomer Consumer Units

The Proteus AYXLM range of isolator incomer metal consumer units are designed and manufactured to BSEN61439 pt 3 and meets the requirements of BS7671:2008, Amendment 3:2015, regulation 421.1.201 - effects against thermal influences specifically for domestic

household dwellings. Manufactured from steel and finished in a polyester powder coating to RAL9010, the AYXLM range provides a comprehensive selection of products to meet the customers requirements.



AYXLM4



AYXLM14

Outgoing ways	Isolator Rating	Cat. No.	H	W	D
4	100A	AYXLM4	256	201	110
6	100A	AYXLM6	256	273	110
8	100A	AYXLM8	256	273	110
10	100A	AYXLM10	256	309	110
12	100A	AYXLM12	256	381	110
14	100A	AYXLM14	256	381	110
16	100A	AYXLM16	256	417	110
18	100A	AYXLM18	256	489	110
20	100A	AYXLM20	256	489	110
26	100A	AYXLM26	256	597	110

## Split Load Consumer Units

The Proteus AYXLM range of split load and dual RCD metal consumer units are designed and manufactured to BSEN61439 pt 3 and meets the requirements of BS7671:2008, Amendment 3:2015, regulation 421.1.201 - effects against thermal influences specifically for domestic

household dwellings. Manufactured from steel and finished in a polyester powder coating to RAL9010, the AYXLM range provides a comprehensive selection of products to meet the customers requirements.



AYXLMSLV12

Outgoing ways	Isolator Rating	RCD 1 Rating*	RCD 2 Rating	Cat. No.	H	W	D
6	100A	63A	-	AYXLMSLV6	256	273	110
12	100A	63A	-	AYXLMSLV12	256	381	110

\* - 30mA trip rating

## Dual RCD Consumer Units



AYXLMJB5JB5



AYXLMJB6JB6

Outgoing ways	Isolator Rating	RCD 1 Rating*	RCD 2 Rating*	Cat. No.	H	W	D
6	100A	63A	63A	AYXLMJB3JB3	256	309	110
10	100A	63A	63A	AYXLMJB5JB5	256	381	110
10	100A	80A	80A	AYXLMKB5KB5	256	381	110
12	100A	63A	63A	AYXLMJB6JB6	256	417	110
12	100A	80A	80A	AYXLMKB6KB6	256	417	110
16	100A	63A	63A	AYXLMJB8JB8	256	489	110
16	100A	80A	80A	AYXLMKB8KB8	256	489	110
20	100A	63A	63A	AYXLMJB10JB10	256	597	110
20	100A	80A	80A	AYXLMKB10KB10	256	597	110

\* - 30mA trip rating

## High Integrity Dual RCD Consumer Units

The Proteus AYXLM range of high integrity Dual RCD metal consumer units are designed and manufactured to BSEN61439 pt 3 and meets the requirements of BS7671:2008, Amendment 3:2015, regulation 421.1.201 - effects against thermal influences specifically for domestic

household dwellings. Manufactured from steel and finished in a polyester powder coating to RAL9010, the AYXLM range provides a comprehensive selection of products to meet the customers requirements.



AYXLM2JB4JB4

Outgoing ways	Isolator Rating	RCD 1 Rating*	RCD 2 Rating*	Cat. No.	H	W	D
6	100A	63A	63A	AYXLM1JB2JB3	256	309	110
10	100A	63A	63A	AYXLM2JB4JB4	256	381	110
12	100A	63A	63A	AYXLM2JB5JB5	256	417	110
14	100A	63A	63A	AYXLM2JB6JB6	256	489	110
20	100A	80A	80A	AYXLM4KB8KB8	256	597	110
10	100A	63A	63A	AYXLMDSL10	256	381	110
16	100A	80A	80A	AYXLMDSL16	256	489	110
22	100A	80A	80A	AYXLMDSL22	256	597	110

\* - 30mA trip rating

## RCD Incomer Consumer Units

The AYXLM range of RCD incomer metalclad consumer units are available with 63A, 80A and 100A RCD incomer ratings and 30mA earth leakage protection. Manufactured from steel and finished in a polyester powder coating to

RAL9010, the range provides a comprehensive selection of products to meet the customers requirements. For higher earth leakage protection, 100mA to 500mA, please contact our sales office for further details.



AKBXM4

Outgoing ways	Isolator Rating	RCD 1 Rating*	RCD 2 Rating	Cat. No.	H	W	D
4	-	63A	-	AJBXM4	256	201	110
6	-	63A	-	AJBXM6	256	273	110
8	-	63A	-	AJBXM8	256	273	110
12	-	63A	-	AJBXM12	256	381	110
4	-	80A	-	AKBXM4	256	201	110
6	-	80A	-	AKBXM6	256	273	110
8	-	80A	-	AKBXM8	256	273	110
12	-	80A	-	AKBXM12	256	381	110
4	-	100A	-	ALBXM4	256	201	110
6	-	100A	-	ALBXM6	256	273	110
8	-	100A	-	ALBXM8	256	273	110
12	-	100A	-	ALBXM12	256	381	110

\* - 30mA trip rating

## Bespoke Units

Proteus Switchgear offer a vast array of standard built consumer units, **however**, if you do not find the exact product you require, then **we** can offer a bespoke unit.

**Please contact us for further details.**







601B

## MCBs

Current Rating (A)	6kA SP Cat. No.
1	601B
2	602B
4	604B
6	606B
10	610B
16	616B
20	620B
25	625B
32	632B
40	640B
45	645B
50	650B
63	663B



100/2/30T

## RCDs

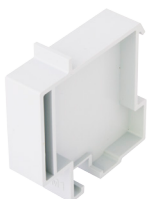
Current Rating (A)	No. Of Poles	Max. Cable Size (mm <sup>2</sup> )	30mA Sensitive Cat. No.
25	2	50	25/2/30T
40	2	50	40/2/30T
63	2	50	63/2/30T
80	2	50	80/2/30T
100	2	50	100/2/30T



406MCRSP  
6MBRSPK

## RCBOs

Current Rating (A)	4.5kA Cat. No.	6kA Compact Cat. No.	6kA Cat. No.
6	6MBRSP	6MBRSPK	66MBRSP
10	10MBRSP	10MBRSPK	106MBRSP
16	16MBRSP	16MBRSPK	166MBRSP
20	20MBRSP	20MBRSPK	66MBRSP
25	-	25MBRSPK	-
32	32MBRSP	32MBRSPK	326MBRSP
40	40MBRSP	-	406MBRSP
45	45MBRSP	-	-



BM1

## Blank Modules

Description	Cat. No.
Blanking Plate	B1
Blanking Module	BM1

**Proteus Switchgear**  
**Consumer Unit Division**

Pipers Road,  
Park Farm Industrial Estate,  
Redditch,  
Worcestershire.  
B98 0HU.



01527 517117



01527 526873



[www.proteusswitchgear.co.uk](http://www.proteusswitchgear.co.uk)



[cons@proteusswitchgear.co.uk](mailto:cons@proteusswitchgear.co.uk)

