



New 60 page catalogue out from Sept 2012 including a comprehensive & unbeatable LED range

Quality Lighting & Wiring Accessories

Featuring:

CONTRACTOR+
Decorative Accessories

CONTRACTOR+
Metal Clad Accessories

CONTRACTOR+
Fire Rated Downlights

CONTRACTOR+
Weatherproof Accessories

CONTRACTOR+
Safety Alarms

CONTRACTOR+
Energy Saving Lighting

SUPER SLIM

SUPER SLIM SCREWLESS

one
LED

Available from all good wholesalers



Head Office, Manchester, England

To discuss your requirements, new and existing customers are welcome to visit us at our fully working showroom within our impressive 50,000sq ft warehouse facility in Manchester. (Appointments should be made with the sales office in advance.)

Mission

'Quality in Action' - to be the benchmark in the electrical distribution industry, by understanding and satisfying your needs. We are committed to uphold and enhance our reputation by the standards we have set.

History

One Electrical was established in 2000, and has rapidly grown, from its head office in Manchester, England into a dominant force within the electrical wholesale market for wiring accessories, lighting, and safety devices. Through dedication and hard work from a carefully selected team we have created a brand that is recognised globally, with an international network of sales representatives and depots in Manchester, China, Dublin, Belfast and Dubai. In late 2007, amongst other awards, we successfully achieved ISO9001 accreditation for quality management standards. We have continued to add new product ranges and individual items, in line with changing trends, legislation and customer requirements.

Coinciding with this new catalogue we have launched a new brand, Contractor⁺, which is certain to rapidly become a recognised name in the market because of its 3 key features: Design, Quality, Value. Ensuring our customers receive the best in 'Design, Quality, Value' is the driving force behind One Electrical as a whole, and the new Contractor⁺ Brand epitomises this belief. With the Contractor⁺ Brand extending to Decorative Wiring Accessories, Metal Clad, Fire Rated Downlights, and Outdoor Lighting, it offers our customers a distinct competitive advantage because of its aesthetic design, excellent quality, and the keenest prices in the market. We are pleased to showcase the Contractor⁺ Brand in this new catalogue.

Source

Not only do we hold comprehensive stock of all the products shown in the catalogue but also have the expertise, knowledge and capability to source and supply almost any electrical product. Should you have any specific product requirements, or any forthcoming project work where you require a professional sourcing service, resulting in a quality and competitive product, do not hesitate to enquire with us.

Stock

Our aim is to despatch all of our products from our 50,000 sq ft warehouse the day you place your order. Over the last 12 months we have evaluated our stock profile, and have subsequently added new lines, and withdrawn some lines that are no longer as popular as they once were. This re-evaluation has enabled us to substantially increase stock levels on the fastest moving items, ensuring that you always have access to our items when you need them.

Support

Full technical data sheets for our products are available for download from our website. We offer free POS material including unpriced catalogues and leaflets, and eye catching counter and wall hanging display boards for our stockists.

Logistics

We offer a FREE next day delivery service for all orders over the value of £200. For a small additional charge, you can also have your order delivered by 9am the next day or even delivered to you on a Saturday. Please however allow 2-3 days for delivery in certain circumstances. Please note orders under £200 are subject to a £12 carriage charge, and there is a £50 minimum order value.

Environmental Responsibility

We are fully committed to environmental sustainability, developing and sourcing the latest in energy efficient lighting products. We now carry a wide range LED and CFL lighting solutions which significantly reduce the amount of power required for a luminaire. We offer retro fit lamps for floodlights, and downlights, as well as complete low energy fittings such as our 3W LED emergency bulkhead, and our 3W LED walkover light.

In addition to this we are also fully compliant with all current government waste and disposal regulations, for WEEE, Batteries, and Packaging.

WEEE: CD01/00220, Packaging: CD02/00161, Batteries:CCRC106

Corporate

Win tickets to top Premiership football matches and other corporate events such as concerts, motor races and tournaments. For every order placed with us, you are entered into a monthly draw for 2 tickets to a major sporting event.

Account & Terms

We offer 45 day account facilities with up to £100,000 credit available subject to our full terms and conditions, which are available on request. All prices are subject to change without notification. All information in this brochure was correct at time of print.

Contents

Wiring Accessories

Contractor+ Decorative Wiring Accessories
Page 4 - 7

Super Slim Screwless Decorative Wiring Accessories
Page 8 - 9

Super Slim White Plastic Wiring Accessories
Page 10 - 12

Contractor+ Metal Clad Wiring Accessories &
Occupancy Switches
Page 13

Contractor+ Weatherproof Accessories
Page 14

Lighting

Contractor+ Fire Rated Downlights
Page 15 - 17

Lamps and Lighting Accessories
Page 18

Bathroom Lighting
Page 19 - 20

IP Rated LED Lighting
Page 21

IP Rated Lighting and Floodlighting
Page 22 - 24

Commercial Lighting and Emergency Lighting
Page 25

Non Corrosive Fittings
Page 26

Safety Alarms
Page 27



The launch of our new Contractor⁺ Brand, was led by our latest range of Decorative Wiring Accessories in Autumn 2009. The aim of the Contractor⁺ Brand is to offer our customers well designed, high quality products for the best possible value for money.

This excellent range of decorative accessories ticks every box in the Contractor⁺ 'Design, Quality, Value' philosophy.

Available in Polished or Brushed Chrome, with Black or White inserts. Each finish has an extensive range of 25 off the shelf plate products, along with a Grid System with endless combinations, and a Euro Module Data System. Our inserts are quickly and easily interchangeable with only one screw to attend to. **Grid System available from Spring 2010.**

All fittings are individually clamshell packed, complete with fixing screws and instructions. All products are manufactured to appropriate BS standards and are CE marked.

Summary of Key Features

- Aesthetic rounded plate
- Top access terminals on sockets
- Large easy access terminals
- Double pole, twin earth double sockets
- Complete with colour coded gasket to protect from damp plaster
- Fits into standard back boxes using 4mm cable for ease of installation
- Quality interchangeable inserts
- Grid system for ultimate flexibility
- Euro Module Data System for all applications
- 30 year warranty
- Retail clamshell packaged



Contractor⁺ Design, Quality, Value

- An aesthetically styled rounded edge plate, made from durable stainless steel
- High quality inserts and modules
- Designed and manufactured with the contractor in mind
- The Contractor⁺ range of Decorative Accessories offers excellent quality and the only choice where cost reduction is essential.



How To Order:

Select one of the prefixes to denote the finish required, and place in front of the suffix, which denotes the product line required.

Examples:

CP3003 = Brushed Chrome, White Insert 1g 2w Switch
 CP1006 = Polished Chrome, Black Insert 1g 2w Intermediate
 CP1710 = Brushed Chrome, Black Insert Telephone Slave

Prefix Key:

CP10 = Polished Chrome, Black Insert
 CP15 = Polished Chrome, White Insert
 CP17 = Brushed Chrome, Black Insert
 CP30 = Brushed Chrome, White Insert

All manufactured and certified to relevant BS Standards

Code Description

01	Single Switched Socket
02	Double Switched Socket DP
03	1g 2w Switch
04	2g 2w Switch
05	3g 2w Switch
06	1g Intermediate Switch
07	1g 2w 400W Dimmer
08	2g2w 400W Dimmer
09	Single TV Point
10	Single Telephone Slave Socket
11	Single Telephone Master
12	13A Unswitched Spur
13	13A Switched Spur with Neon
14	20A Double Pole Switch with Neon
15	45A Double Pole Switch with Neon
16	45A Double Pole Tall Switch with Neon
17	45A Cooker Switch Socket
18	3 Pole Fan Isolator Switch
19	1g Blank Plate
20	2g Blank Plate
22	Single RJ11 Telephone Point
23	3g 2w Dimmer
24	4g 2w Dimmer
25	Shaver Socket
26	Single RJ45 Data Point
27	13A Switched Spur
44	4g 2w Switch



How To Order:

Select one of the prefixes to denote the finish required, and place in front of the suffix, which denotes the product line required.

Examples:

CP1080 = Polished chrome, black trim, 1g 2 module data plate

CP3081 = Brushed chrome, white trim, 2g 4 module data plate

Then simply order the modules/inserts you require

Prefix Key:

CP10 = Polished Chrome, Black Insert

CP15 = Polished Chrome, White Insert

CP17 = Brushed Chrome, Black Insert

CP30 = Brushed Chrome, White Insert

Euro Module Data Range

Plates

Code	Description
80	1g 2 module data plate
81	2g 4 module data plate

Modules

White

Code	Description
SS5001UK	Half Module Blank Plate
SS5002UK	Master Telephone Module
SS5003UK	Slave Telephone Module
SS5004UK	RJ11 Module
SS5005UK	RJ45 Module
SS5006UK	TV/FM (DAB) Module
SS5007UK	TV/FM(DAB)/SAT module
SS5008UK	TV Male Module
SS5009UK	TV Female Module
SS5010UK	F Type Module

Black

Code	Description
SS6001UK	Half Module Blank Plate
SS6002UK	Master Telephone Module
SS6003UK	Slave Telephone Module
SS6004UK	RJ11 Module
SS6005UK	RJ45 Module
SS6006UK	TV/FM(DAB) Module
SS6007UIK	TV/FM(DAB)/SAT Module
SS6008UK	TV Male Module
SS6009UK	TV Female Module
SS6010UK	F Type Module



How To Order:

Select one of the prefixes to denote the finish required, and place in front of the suffix, which denotes the product line required.

Examples:

CP1551 = Polished chrome, white trim, 1g grid plate

CP1754 = Brushed chrome, black trim, 4g grid plate

Then simply order the modules/inserts you require

Prefix Key:

CP10 = Polished Chrome, Black Insert

CP15 = Polished Chrome, White Insert

CP17 = Brushed Chrome, Black Insert

CP30 = Brushed Chrome, White Insert

Grid System Range (Available from Spring 2010)

Plates

Code	Description	Code	Description
51	1g Plate	58	8g Plate
52	2g Plate	59	9g Plate
53	3g Plate	60	12g Plate
54	4g Plate	61	18g Plate
56	6g Plate	62	24g Plate

Modules

10A 2way Switch Modules

CPMDB03 10A 2way Switch Mod Black

CPMDW03 10A 2way Switch Mod White

10A Press Switch Modules

CPMDB45 10A Press Switch Mod Black

CPMDW45 10A Press Switch Mod White

10A Intermediate Modules

CPMDB06 10A Intermediate Mod Black

CPMDW06 10A Intermediate Mod White

20A Double Pole Switch Modules

CPMDB14 20A DP Switch Mod Black

CPMDW14 20A DP Switch Mod White

400W Dimmer Module

CPMDPC07 400W Dimmer Mod Polished Chrome

CPMDBC07 400W Dimmer Mod Brushed Chrome

Flex Outlet

CPMDB46 Flex Outlet Mod Blank

CPMDW46 Flex Outlet Mod White

Fuse Unit

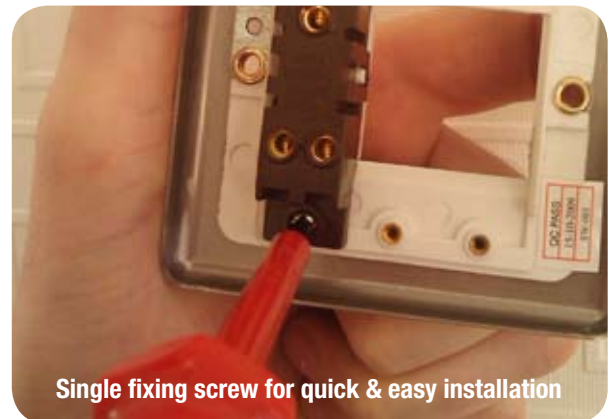
CPMDB12 Fuse Mod Blank

CPMDW12 Fuse Mod White

Blank

CPMDB47 Blank Black

CPMDW47 Blank White



Single fixing screw for quick & easy installation



SUPER SLIM SCREWLESS

Design, Quality, Value - Exclusively By One Electrical Ltd

Our Super Slim Screwless range launched in early 2009 is a leader in terms of quality and aesthetic appeal. Made from 100% stainless steel, with a unique slim front plate, our product is unrivalled and installed in many worldwide prestigious developments since its launch.

Key Features

- Fits into standard back boxes using 4mm cable for ease of installation
 - Large colour coded and clearly marked terminals, with captive screws allowing quick and easy installation
 - Top access terminals on sockets
 - Recessed earth bar
 - Peel -off protective film to maintain perfect and scratch free front plates
 - Discreet gasket to protect from damp plaster
- Screwless, front plate is simple, sleek and secure



Design, Quality, Value

- Our premium quality Super Slim Screwless range features a stylish and unobtrusive 5mm slim plate, with subtle ergonomic matching rocker switches, along with a sleek screwless front plate to create a stunning finish
- With its unique design, 100% stainless steel front plate, available in a variety of finishes, 30 year warranty and excellent value, our SUPER SLIM SCREWLESS range is the only choice where appearance, cost, and quality assurance are vital.



SUPER SLIM SCREWLESS

Design, Quality, Value - Exclusively By One Electrical Ltd

How To Order:

Select one of the prefixes to denote the finish required, and place in front of the suffix, which denotes the product line required.

Examples:

SLSPB3001 = Polished Chrome, Black Insert Double Socket
 SLSBW4407 = Brushed Chrome, White Insert 3 Pole Fan Isolator
 SLSBB4001 = Brushed Chrome, Black Insert Unswitched Fused Spur

Prefix Key:

SLSPW = Polished Chrome, White Insert
 SLSPB = Polished Chrome, Black Insert
 SLSBW = Brushed Chrome, White Insert
 SLSBB = Brushed Chrome, Black Insert
 SLSGM = Black Nickel/Gun Metal, Black Insert

All manufactured and certified to relevant BS Standards

Code Description

3002	13A Single Sw Socket DP Screwless
3001	13A Twin Sw Socket DP Screwless
4202	10A 1g 2w Switch Screwless
4203	10A 2g 2w Switch Screwless
4205	10A 3g 2w Switch Screwless
4206	10A 4g 2w Switch Screwless
4204	10A 1g 2w Intermediate Switch Screwless
4407	3 Pole Fan Isolator Switch Screwless
4001	13A Unswitched Fused Spur Screwless
4002	13A Switched Fused Spur Screwless
4003	13A Switched Fused Spur Neon Screwless
4006	13A Switched Fused Spur Neon Flex Outlet Screwless
4403	45A 1g Cooker Switch Neon Screwless
4402	45A Tall Cooker Switch Neon Screwless
4401	45A Cooker Switch Socket Neons Screwless
4101	20A DP Switch Screwless
4102	20A DP Switch Neon Screwless
3101	5A Unswitched Socket Screwless
3501	Shaver Socket Screwless
3401	TV Point Screwless
3301	Telephone Slave Screwless
3303	Telephone Master Screwless
3403	TV / FM(DAB) / SAT Screwless
3008	1g 2 Module Data Plate Screwless
3009	2g 4 Module Data Plate Screwless
4209	1g 2w 400w Dimmer Screwless
4210	2g 2w 400w Dimmer Screwless
3006	1g Blank Plate Screwless
3007	2g Blank Plate Screwless



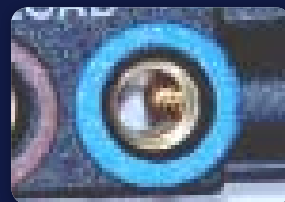
SUPER SLIM

Super Slim - Design, Quality, Value



Key Features For The Installer & User

- Fits into standard back boxes using 4mm cable for ease of installation
- Large colour coded terminals allow quick and easy fitting
- Clearly marked terminals
- Top access terminals on sockets
- Recessed earth bar
- 4mm 'Super Slim' design is aesthetic pleasing
- Aesthetic screw covers for a 'screwless' appearance
- Ergonomic and modern looking rocker switches
- Discreet grey plate markings
- Scratch resistant high quality European Urea
- Captive terminal screws
- 30 year warranty – quality assured



SUPER SLIM

Super Slim - Design, Quality, Value



All manufactured and certified to relevant BS Standards

Code

Description

SOCKETS - *BS-1363-2*

SS3002UK	1g Switched
SS3001UK	2g Switched
SS3003UK	2g Switched Socket DP
SS3101UK	5A 3 Pin Socket

SWITCHES & DIMMERS

BS EN 60669-1 / BS EN 60669-2-1 / 55014-1 / 55014-2

SS4201UK	1g 1w Switch 10A
SS4202UK	1g 2w Switch
SS4203UK	2g 2w Switch 10A
SS4204UK	1g 2w Intermediate Switch
SS4205UK	3g 2w Switch 10A
SS4206UK	4g 2w Switch 10A
SS4407UK	3 Pole Fan Isolator Switch
SS4209UK	1g 2w Dimmer 400w
SS4210UK	2g 2w Dimmer 400w

BLANK PLATES

SS3006UK	1g Blank Plate
SS3007UK	2g Blank Plate

FUSED SPURS - *BS 1363-4*

SS4001UK	Fused Spur
SS4002UK	Switched Fused Spur
SS4003UK	Switched Fused Spur Neon
SS4004UK	Fused Spur and Neon
SS4005UK	Fused Spur with Trunk Flex Outlet
SS4006UK	Switched Fused Spur with Neon & Trunk Flex Outlet



Code Description

20A & 45A DOUBLE POLE SWITCHES -

BS EN 60669-1 / BS 4117 / BS 4119 / BS 4118 / BS 4120

SS4101UK	20A DP Switch
SS4102UK	20A DP Switch With Neon
SS4401UK	45A Cooker Switch with 13A Socket With Neon
SS4402UK	45A Cooker Switch (Double Tall Plate) With Neon
SS4403UK	45A Cooker Switch (Single Plate) With Neon
SS4404UK	Cooker Connection Unit



TELEPHONE & TV SOCKETS

SS3301UK	Single Phone Point Slave
SS3303UK	Single Phone Point Master
SS3401UK	TV Point
SS3402UK	Sat / Tv Point
SS3403UK	SAT/TV/DAB triplex



SHAVER SOCKET

SS3501UK	Dual Voltage Shaver Socket (Slim Transformer)
----------	---

DATA PLATES

SS3008UK	1g Two Module Data Plate
SS3009UK	2g Four Module Data Plate

DATA MODULES

SS5001UK	Half Module Blank Plate
SS5002UK	Master Telephone Module
SS5003UK	Slave Telephone Module
SS5004UK	RJ11 Module
SS5005UK	RJ45 Module
SS5006UK	TV/FM (DAB) Module
SS5007UK	TV/FM(DAB)/SAT Module
SS5008UK	TV Male Module
SS5009UK	TV Female Module
SS5010UK	F Type Module



Part of the Contractor⁺ Brand our range of metal clad accessories offers a robust quality solution suitable for the toughest environments. With the same excellent inserts used throughout the Contractor⁺ accessories ranges, the quality is guaranteed. Our Contractor⁺ range of metal clad accessories offers excellent quality and the only choice where cost reduction is essential.

All products supplied complete with back boxes (*excluding)

All manufactured and certified to relevant BS Standards

Code	Description
CP5001	1g 13A Switched Socket
CP5002	2g 13A Switched Socket
CP5003	1g 2w 10A Switch
CP5004	2g 2w 10A Switch
CP5005	3g 2w 10A Switch
CP5012	13A Unswitched Spur with Flex Outlet
CP5013	13A Switched Spur with Flex Outlet & Neon
CP5026	13A Unswitched Spur with Flex Outlet & Neon
CP5027	13A Switched Spur with Flex Outlet
CP5014	20A Double Pole Switch with Neon & Flex Outlet
CP5015	45A Double Pole Switch with Neon
CP5019	1g Blank Plate *
CP5020	2g Blank Plate *
CP5021	1g Back Box
CP5022	2g Back Box

Special items available on request



CONTRACTOR⁺

Occupancy Switches



• CP901

RECESSED OCCUPANCY DETECTOR

Load Max 2000w Incandescent
 Load Max 1000w Fluorescent
 Spring Clips For Easy Installation
 Detects Day And Night Time Automatically
 Set From 10 Seconds To 15 Minutes
 Easy Access Front Lux And Time Settings.
 No need To Remove From Ceiling
 Cut Out Size 65mm
 Pre Wired



• CP902

SURFACE OCCUPANCY DETECTOR

Load Max 2000w Incandescent
 Load Max 1000w Fluorescent
 Easy Installation Using First Fix Base
 Detects Day And Night Time Automatically
 Timing From 10 Seconds To 6 Minutes
 Easy Access Front Lux And Time Settings.
 No need To Remove From Ceiling
 Size D90mm x H28mm
 Pre Wired

A fantastic new range of weatherproof accessories. Marketed under the Contractor⁺ Brand, this range of products offers an aesthetically pleasing design, fantastic quality and very competitively priced.

All manufactured and certified to relevant BS Standards

Code	Description
EH1801	1g 13A Socket IP55
EH1802	2g 13A Socket IP56
EH1802-RCD	2g 13A Socket IP56 Switched with RCD Protection
EH1803	1g 2w 10A Switch IP55
EH1804	2g 2w 10A Switch IP55
CP1902	2g 13A Switched Socket with Neons IP66



Fire Rated Downlights

The next generation of One Electrical Fire Rated Downlights are presented under the Contractor⁺ Brand, as they fit perfectly within the brand 'Design, Quality, Value' ethos. Of improved design to our outgoing models, with extra strong springs, superior lamp holders, and with an added 'lamp supporting clip' on the Low Voltage models to prevent the possibility of arcing.

Supplied without lamp to allow you and your customers the ultimate flexibility.

We offer a full range of suitable lamps on [page 18](#)

Key Features

Fire rated downlights tested to 30, 60 and 90 minutes in accordance with BS476: Parts 21, 22 and 23

Complies the Fire Safety & Sound Insulation requirements of the UK Building Regulations, including Document E and Document B

Simple to install

Strong recessed springs for better installation

Quality lampholders

Large connector block with cable grip for loop in installation

Well ventilated body offers cooler running, prolonging lamp life and components

Accepts Halogen, LED or Low Energy lamps

Contractor⁺ For Value And Quality

Protection against spread of fire and noise pollution

Quality pressed steel, offers the best value for money

Supplied without lamp to allow user ultimate flexibility

Available in Chrome, Brushed Chrome, White

The Contractor+ Range offers excellent quality and the only choice where cost reduction is essential



Tested to 30, 60 and 90 minutes



Available in Chrome, Brushed Chrome or White



Accepts all lamps from halogen to CFL and LED

Code **Description**

LOW VOLTAGE (MR16)

Pressed Steel Fixed - Cut out 65 mm

CP-FIRLVD-BC	MR16 FIXED PRESSED BRUSHED CHROME
CP-FIRLVD-CH	MR16 FIXED PRESSED CHROME
CP-FIRLVD-WH	MR16 FIXED PRESSED WHITE

Pressed Steel Tilt - Cut out 75 mm

CP-FIRLVT-BC	MR16 TILT PRESSED BRUSHED CHROME
CP-FIRLVT-CH	MR16 TILT PRESSED CHROME
CP-FIRLVT-WH	MR16 TILT PRESSED WHITE

Diecast Aluminium Fixed - Cut out 70 mm

CP-FIRDILV-BC	MR16 FIXED DIECAST BRUSHED CHROME
CP-FIRDILV-CH	MR16 FIXED DIECAST CHROME
CP-FIRDILV-WH	MR16 FIXED DIECAST WHITE

Code **Description**

Diecast Aluminium Tilt - Cut out 83 mm

CP-FIRDILVT-BC	MR16 TILT DIECAST BRUSHED CHROME
CP-FIRDILVT-CH	MR16 TILT DIECAST CHROME
CP-FIRDILVT-WH	MR16 TILT DIECAST WHITE

IP65 Diecast Bathroom - Cut out 68 mm

CP-FIRLVBD-BC	MR16 IP65 BRUSHED CHROME
CP-FIRLVBD-CH	MR16 IP65 CHROME
CP-FIRLVBD-WH	MR16 IP65 WHITE



LED lamps available for all fittings

MAINS (GU10)

Pressed Steel Fixed - Cut out 65 mm

CP-FIRGUTD-BC	GU10 FIXED PRESSED BRUSHED CHROME
CP-FIRGUTD-CH	GU10 FIXED PRESSED CHROME
CP-FIRGUTD-WH	GU10 FIXED PRESSED WHITE

Pressed Steel Tilt - Cut out 75 mm

CP-FIRGUTT-BC	GU10 TILT PRESSED BRUSHED CHROME
CP-FIRGUTT-CH	GU10 TILT PRESSED CHROME
CP-FIRGUTT-WH	GU10 TILT PRESSED WHITE

Diecast Aluminium Fixed - Cut out 70 mm

CP-FIRGUDI-BC	GU10 FIXED DIECAST BRUSHED CHROME
CP-FIRGUDI-CH	GU10 FIXED DIECAST CHROME
CP-FIRGUDI-WH	GU10 FIXED DIECAST WHITE

Diecast Aluminium Tilt - Cut out 83 mm

CP-FIRDIGUT-BC	GU10 TILT DIECAST BRUSHED CHROME
CP-FIRDIGUT-CH	GU10 TILT DIECAST CHROME
CP-FIRDIGUT-WH	GU10 TILT DIECAST WHITE

IP65 Diecast Bathroom - Cut out 68 mm

CP-FIRGUBD-BC	GU10 IP65 BRUSHED
CP-FIRGUBD-CH	GU10 IP65 CHROME
CP-FIRGUBD-WH	GU10 IP65 WHITE



Lamps Available:
See page 18

Energy Saving Fire Rated Downlights

The latest addition to our excellent range of fire-rated downlights. These quality die-cast GU10 fittings are available in white, chrome, and brushed chrome. All fittings are available with a variety of energy efficient lamp options;

How To Order:

Choose a code from below, which will tell us the type of fitting and finish you require, then simply add the required wattage from the lamp options in the tabs below.

Examples:

CP-FIRGUDI-WH-13W = 13W CFL Fixed Fire Rated Downlight in White

CP-FIRDIGUT-BC-5W = 5W High Power LED Tilt Fire Rated Downlight in Brushed Chrome

CP-FIRGUBD-CH-7W = 7w CFL IP65 Fire Rated Downlight in Chrome



DIE-CAST ALUMINIUM LOW ENERGY GU10 FIRE RATED DOWNLIGHTS

- CP-FIRGUDI-W FIXED DIECAST FIRE RATED DOWNLIGHT WHITE
- CP-FIRGUDI-CH FIXED DIECAST FIRE RATED DOWNLIGHT CHROME
- CP-FIRGUDI-BC FIXED DIECAST FIRE RATED DOWNLIGHT BRUSHED CHROME



DIE-CAST ALUMINIUM LOW ENERGY GU10 FIRE RATED TILT DOWNLIGHTS

- CP-FIRDIGUT-W TILT DIECAST FIRE RATED DOWNLIGHT WHITE
- CP-FIRDIGUT-CH TILT DIECAST FIRE RATED DOWNLIGHT CHROME
- CP-FIRDIGUT-BC TILT DIECAST FIRE RATED DOWNLIGHT BRUSHED CHROME



DIE-CAST ALUMINIUM LOW ENERGY GU10 FIRE RATED DOWNLIGHTS

- CP-FIRGUBD-WH IP65 BATHROOM FIRE RATED DOWNLIGHT WHITE
- CP-FIRGUBD-CH IP65 BATHROOM FIRE RATED DOWNLIGHT CHROME
- CP-FIRGUBD-BC IP65 BATHROOM FIRE RATED DOWNLIGHT BRUSHED CHROME

PLEASE REMEMBER TO SPECIFY WHICH ENERGY EFFICIENT LAMP OPTION YOU REQUIRE

Lamps And Lighting Accessories

An excellent range of the most popular lamps and lighting accessories.

Full range of LED retro fit lamps available! Call for details



LOW ENERGY

7W GU10 ENERGY SAVING

OEGULP-ES-7W
7W LOW ENERGY GU10 LAMP



LOW ENERGY

9W GU10 ENERGY SAVING

OEGULP-ES-9W
9W LOW ENERGY GU10 LAMP



LOW ENERGY

11W GU10 ENERGY SAVING

OE-GULP-ES-11W
11W LOW ENERGY GU10 LAMP

7W VERSION FITS IN ANY STANDARD DOWNLIGHT

- 8000 HOURS
- CE MARKED
- 6400K
- 'A' ENERGY EFFICIENCY
- 80% LESS ENERGY CONSUMPTION



LED

LED LAMPS

OEGULED-WH LED LIGHT WHITE
OEGULED-BL LED LIGHT BLUE



LED

HIGH POWER LED GU10 LAMPS

OEGULED-3W – 27K OR 64K (200-220lumens)
OEGULED-6W – 27K OR 64K (300-320lumens)



GU10 HALOGEN

OEGULP-50 50W GU10 LAMP
OEGULP-35 35W GU10 LAMP



LED

MR16 Now available

MR16 HALOGEN (50MM)

OELVLP-50 LV 50W WIDE ANGLE LAMP
OELVLP-35 LV 35W WIDE ANGLE LAMP



COMMERCIAL LAMPS

OETHDMH-70W Rx7s MH 70W LAMP
OETHDMH-150W Rx7s MH 150W LAMP
OETHGX18W GX24 18W PL LAMP
OETHGX26W GX24 26W PL LAMP



LOW ENERGY

R7 24W Retro Fit Floodlight Lamp

(For 500W Housing) OE-24WRX7

R7 9W Retro Fit Floodlight Lamp

(For 150W Housing) OE-9WRX7



LED

Now available

42W PL Lamp

OETHGX42W GX24 42W PL LAMP



GU10 + MR16 LAMP HOLDERS

GU10 HOLDER GU10 HOLDER-REV02
GU10 LAMP HOLDER WITH STIRRUP & TERMINAL BLOCK



GEAR TRAYS

ACCUGYBN-70 GEAR TRAY-70W METAL HALIDE LAMP
ACCUGYBN-150 GEAR TRAY-150W METAL HALIDE LAMP

Suitable for use with our metal halide downlights, see page 25



OE60T

20-60VA FULLY DIMMABLE THERMAL CUT OUT COMPATIBLE WITH MOST LEADING AND TRAILING EDGE DIMMERS PRE-WIRED 10 YEAR WARRANTY

Bathroom Lighting

A fantastic range of high quality bathroom fittings, including IP65 downlight fittings, fire rated varieties, 4 track spotlights, and LED wall lights. Where a high specification lighting installation is required, we offer an outstanding choice.

IP65 MR16 Low Voltage Shower Lights



IP65 MR16 BATHROOM LIGHT CHROME

- OELVBD-CH
- DIAMETER 84mm
- CUTOUT 66mm
- DEPTH 27.5mm
- 35W MAX



IP65 MR16 BATHROOM LIGHT BRUSHED CHROME

- OELVBD-BC
- DIAMETER 84mm
- CUTOUT 66mm
- DEPTH 27.5mm
- 35W MAX



IP65 MR16 BATHROOM LIGHT WHITE

- OELVBD-W
- DIAMETER 84mm
- CUTOUT 66mm
- DEPTH 27.5mm
- 35W MAX

IP55 MR16 Low Voltage Glass Bathroom Lights With Chrome Bezel

(Please note this fitting comes complete with a 60VA transformer and 35W halogen lamp)



IP55 MR16 ROUND GLASS BATHROOM LIGHT

- OELVBD-RD
- DIAMETER 105mm
- CUTOUT 68mm
- DEPTH 90mm
- 35W MAX



IP55 MR 16 SQUARE GLASS BATHROOM LIGHT

- OELVBD-SQ
- DIAMETER 100mm
- CUTOUT 68mm
- DEPTH 90mm
- 35W MAX

IP65 MR16 Firerated Showerlights



IP65 MR16 FIRERATED BATHROOM LIGHT CHROME

- CP-FIRLVBD-CH
- DIAMETER 92mm
- CUTOUT 68mm
- DEPTH 133mm
- 35W MAX



IP65 MR16 FIRERATED BATHROOM LIGHT BRUSHED CHROME

- CP-FIRLVBD-BC
- DIAMETER 92mm
- CUTOUT 68mm
- DEPTH 133mm
- 35W MAX



IP65 MR16 FIRERATED BATHROOM LIGHT WHITE

- CP-FIRLVBD-WH
- DIAMETER 92mm
- CUTOUT 68mm
- DEPTH 133mm
- 35W MAX

Bathroom Lighting

A fantastic range of high quality bathroom fittings, including IP65 downlight fittings, fire rated varieties, 4 track spotlights, and LED wall lights. Where a high specification lighting installation is required, we offer an outstanding choice.

IP65 GU10 Firerated Showerlights



IP65 GU10 FIRERATED BATHROOM LIGHT CHROME

- CP-FIRGUBD-CH
- DIAMETER 92mm
- CUTOUT 68mm
- DEPTH 133mm
- 35W MAX



IP65 GU10 FIRERATED BATHROOM LIGHT BRUSHED CHROME

- CP-FIRGUBD-BC
- DIAMETER 92mm
- CUTOUT 68mm
- DEPTH 133mm
- 35W MAX



IP65 GU10 FIRERATED BATHROOM LIGHT WHITE

- CP-FIRGUBD-WH
- DIAMETER 92mm
- CUTOUT 68mm
- DEPTH 133mm
- 35W MAX

IP44 Spotlights



- OE-GUBD3

3 MULTI ANGLED CHROME / BRUSHED CHROME SPOTLIGHT

SUPPLIED COMPLETE WITH 3 X GU10 HALOGEN LAMPS.

CAN ALSO ACCEPT GU10 LED LAMPS AND SELECTED GU10 ENERGY SAVING LAMPS

- IP44 RATED



- OE-GUBD4

4 MULTI ANGLE CHROME / BRUSHED CHROME SPOTLIGHT

SUPPLIED COMPLETE WITH 4 X GU10 HALOGEN LAMPS.

CAN ALSO ACCEPT GU10 LED LAMPS AND SELECTED GU10 ENERGY SAVING LAMPS

- IP44 RATED

IP Rated LED Lighting

A fantastic range of high quality LED wall lights suitable for multiple environments, including bathrooms and outdoor installations. These items are perfect when a high specification and low energy LED lighting installation and appeal is required.



LED rectangular glass light

- OE-LED-HK02-WH

LED rectangular glass light with brushed chrome trim.

- White LED light
- IP65 Rated
- Size W14 x H24 x D9 cm



LED rectangular glass light

- OE-LED-HK02-BL

LED rectangular glass light with brushed chrome trim.

- Blue LED light
- IP65 Rated
- Size W14 x H24 x D9 cm



LED square glass light

- OE-LED-HK01-WH

LED square glass light with brushed chrome trim.

- White LED light
- IP65 Rated
- Size W14 x H14 x D2.7 cm



LED round glass light

- OE-LED-HK02-WH

LED round glass light with brushed chrome trim.

- White LED light
- IP65 Rated
- Size 10.6 x 3 cm



LED Wall Light

- OE-LED-HK05-WH

LED wall light with brushed chrome fitting.

- White LED light
- IP65 Rated
- Size W5 x H25 x D8 cm



LED Downlight

- OEGUTD-9W-W/CH/BC-27K (375 lumens)
- OEGUTD-9W-W/CH/BC-64K (445 lumens)
- 9W OR 3W
- Dimmable
- IP54
- Available in White, Chrome or Brushed Chrome

Low Energy Floodlight Solutions

A superb selection of energy efficient floodlight solutions with and without PIR sensors.

Full range of LED floodlights available!! 10w -120w, with/out PIR
Call for details & best prices, guaranteed!

LED



3W Super Bright LED Floodlight PIR

Item No. OE-LED-PIRFLOOD
Material. Aluminium Die-Cast Body
PIR Sensor, Runs Cool, Bright, Low Energy, 45pcs LED, 3W, **IP54**

LED



3W Super Bright LED Floodlight

Item No. OE-LED-FLOOD
Material. Aluminium Die-Cast Body
Runs Cool, Bright, Low Energy , 45pcs LED, 3W, **IP54**



LOW ENERGY



24W Energy Saving Floodlight PIR

Item No. OE-24WFLOOD-PIR
Material. Aluminium Die-Cast Body
PIR Sensor, 24W R7s Lamp, **IP44**

LOW ENERGY



24W Energy Saving Floodlight

Item No. OE-24WFLOOD
Material. Aluminium Die-Cast Body,
24W R7s Lamp, **IP44**

LOW ENERGY



9W Energy Saving Floodlight PIR

Item No. OE-9WFLOOD-PIR
Material. Aluminium Die-Cast Body
PIR Sensor, 9W R7s Lamp, **IP44**

LOW ENERGY



9W Energy Saving Floodlight

Item No. OE-9WFLOOD
Material. Aluminium Die-Cast Body,
9W R7s Lamp, **IP44**

All Fittings Complete With Lamps
Replacement & Retro Fit Lamps Also Available: **See page 18**

IP Rated Outdoor Lighting

A range of essential outdoor lighting products for domestic and commercial applications. Includes, metal halide floodlights, stainless steel up/down wall light, stainless steel walkover lights, and diecast bollard fittings.



SLIM FLOODS D/ENDED

- OE150W-HQI-BK 150W HQI FLOOD BLACK
 - OE70W-HQI-BK 70W HQI FLOOD BLACK
 - OE150W-HQI-WH 150W HQI FLOOD WHITE
 - OE70W-HQI-WH 70W HQI FLOOD WHITE
 - OE150W-HQI-SIL 150W HQI FLOOD SILVER
 - OE70W-HQI-SIL 70W HQI FLOOD SILVER
- IP65 RATED
 - METAL HALIDE



High Power LED Walk/Drive Over Lights

- Item No. OE3738
- Material Stainless Steel IP67
- Colour Stainless Steel
- Bulb Built in 3 x 1W LED
- Wattage 3W



Wall Lights

- Item No. OEX202
- Material Stainless Steel
- Colour Stainless Steel
- Lamp 2 x GU10
- Wattage Max 50w
- Measurement cm L 10.2 W 9.5 H 18.2



Walk/Drive Over Lights

- Item No. OE3735
- Material Stainless Steel IP67
- Colour Stainless Steel
- Bulb Exclude
- Lamp GU10
- Wattage Max 50w



Walk/Drive Over Lights

- Item No. OE3736
- Material Stainless Steel IP67
- Colour Stainless Steel
- Bulb Exclude
- Lamp GU10
- Wattage Max 50w

Bollards & Posts

- Item No. OE3615
- Material Die Cast Aluminium Body **IP54**
- Colour Black
- Lamp E27 Threaded
- Wattage Max 100w

Bollards & Posts

- Item No. OEAS901PSH
- Material Stainless Steel **IP54**
- Colour Stainless Steel
- Lamp E27 Threaded
- Wattage Max 100w



Brick Lights

- Item No. OE1501
- Material Die Cast Aluminium **IP54**
- Colour Silver
- Lamp E27
- Wattage Max 60w or 13w

Brick Lights

- Item No. OE1502
- Material Die Cast Aluminium **IP54**
- Colour Silver
- Lamp E27
- Wattage Max 60w or 13w

Full technical data sheets available on request and for download from our website

IP Rated Lighting - 2D fittings

A quality range of high frequency energy efficient 16W and 28W fittings, supplied complete with lamps. Available in a variety of colours & base/diffuser combinations. Emergency conversions also available.

Full range of LED versions available!! 5w -15w, dimmable & emergency.
Call for details & best prices, guaranteed!



LUNAR FITTINGS

- OE16W-2DLUN-OW
- OE28W-2DLUN-OW
- OE16W-CHBEZEL
- OE28W-CHBEZEL

16W 2D LUNAR OPAL/WHITE
28W 2D LUNAR OPAL/WHITE
OPTIONAL CHROME BEZEL FOR 16W LUNAR
OPTIONAL CHROME BEZEL FOR 28W LUNAR

- IP54 RATED
- POLYCARBONATE
- INCLUDES LAMP



DRUM FITTINGS

- OE16W-2D-BK-PRIS
- OE28W-2D-BK-PRIS
- OE16W-2D-WH-OP
- OE28W-2D-WH-OP

2D 16W PRISMATIC BLACK
2D 28W PRISMATIC BLACK
2D 16W OPAL WHITE
2D 28W OPAL WHITE

- IP65 RATED
- POLYCARBONATE
- INCLUDES LAMP



EMERGENCY GEAR TRAYS AVAILABLE FOR LUNAR AND DRUM FITTINGS:

- OE16W-EMERGPACK EMERGENCY GEAR TRAY FOR 16W LUNAR & DRUM FITTINGS
- OE28W-EMERGPACK EMERGENCY GEAR TRAY FOR 28W LUNAR & DRUM FITTINGS



LED Retro -fit lamps, or full fittings available.
Dimmable and emergency versions available

Commercial Lighting

An excellent range of commercial lighting, which contains essential fittings for everyday applications, including energy saving 18W & 26W PL downlights, with the option of a drop glass diffuser, and the traditional rectangular and circular metal halide fittings.

We have expanded our emergency bulkhead range to include an energy efficient 3W LED version in both maintained and non maintained options. Full legend kits are available separately for all our bulkhead fittings.

LED PL retro fit lamps available!!



COMPACT FLORESCENT PL DOWNLIGHT COMPLETE WITH GEAR

- OETH1001B-18
COMPACT FLORESCENT 2X18W & GEAR FIXED
- OETH1001B-26
COMPACT FLORESCENT 2X26W & GEAR FIXED



DROP GLASS COMPACT FLORESCENT PL DOWNLIGHT COMPLETE WITH GEAR

- OETH1001B-18DG
DROP GLASS COMPACT FLORESCENT 2X18W & GEAR
- OETH1001B-26DG
DROP GLASS COMPACT FLORESCENT 2X26W & GEAR



METAL HALIDE DOWNLIGHT CIRCULAR TILT

- OETH1024-70
70W METAL HALIDE CIRCULAR TILT
- OETH1024-150
150W METAL HALIDE CIRCULAR TILT



METAL HALIDE DOWNLIGHT CIRCULAR FIXED

- OETH1001-70
70W METAL HALIDE CIRCULAR FIXED
- OETH1001-150
150W METAL HALIDE DOWNLIGHT CIRCULAR FIXED



METAL HALIDE RECTANGULAR TILT

- OETH2030-70
70W METAL HALIDE RECTANGULAR TILT
- OETH2030-150
150W METAL HALIDE RECTANGULAR TILT



8 WATT 3 HOUR EMERGENCY BULKHEADS

- OE-EM-1
MAINTAINED EMERGENCY BULKHEAD
- OE-EM-NON
NON MAINTAINED EMERGENCY BULKHEAD

LED



3 WATT 3 HOUR LED EMERGENCY BULKHEADS

- OE-EM-LED-1
MAINTAINED LED EMERGENCY BULKHEAD
- OE-EM-LED-NON
NON MAINTAINED LED EMERGENCY BULKHEAD



- OE-EM-LEGEND
LEGEND PACK FOR EMERGENCY BULKHEADS

Lamps Available: See page 18

High Frequency And Switch Start Non Corrosives

Our superb range of high quality non corrosives are available in either switch start or high frequency varieties. Our high frequency type are supplied with a ballast for added reliability. High frequency fittings offer a longer lamp life and a flicker free start, along with virtually silent running.

We have consistently improved our non corrosive fittings over recent years, adding to the quality of the internal components, along with strengthening the base and diffuser, creating the excellent product available today.

- IP65 Rated
- T8
- Single or Twin
- Switch Start or High Frequency



IP65 SWITCH START NON CORROSIVE FITTINGS C/W CAPACITOR AND BALLAST

- OEFB1136 4FT SINGLE POLYCARBONATE NON CORROSIVE
- OEFB1236 4FT TWIN POLYCARBONATE NON CORROSIVE
- OEFB1158 5FT SINGLE POLYCARBONATE NON CORROSIVE
- OEFB1258 5FT TWIN POLYCARBONATE NON CORROSIVE
- OEFB1170 6FT SINGLE POLYCARBONATE NON CORROSIVE
- OEFB1270 6FT TWIN POLYCARBONATE NON CORROSIVE

LED tubes and/or full fittings available, dimmable & emergency versions.
Call for details & best prices, guaranteed!



IP65 HIGH FREQUENCY NON CORROSIVE FITTINGS C/W CAPACITOR AND BALLAST

- OEFB1136HF 4FT Single High Frequency Non Corrosive
- OEFB1236HF 4FT Twin High Frequency Non Corrosive
- OEFB1158HF 5FT Single High Frequency Non Corrosive
- OEFB1258HF 5FT Twin High Frequency Non Corrosive
- OEFB1170HF 6FT Single High Frequency Non Corrosive
- OEFB1270HF 6FT Twin High Frequency Non Corrosive

Emergency versions also available in both switch start and high frequency fittings

Stainless steel clips available:

- OEFBSSCLIP Stainless steel clips for non corrosive fittings



Safety Alarms

Having successfully supplied our excellent ionisation smoke alarm for the past 6 years, we launched the photoelectric version in early 2009, and the matching interlinkable heat alarm later in the year. Both products are high quality, and ultra reliable, which is essential for products of this nature.



240V Mains Power Photoelectric Smoke Alarm

- ET8006

Photoelectric smoke alarm. 240V mains powered with battery back up. Interconnectable with up to 40 ET8006/ET8002. BSI Approved and Kitemarked.



CONTRACTOR⁺

Safety Alarms

An excellent new range of quality safety alarms, including hardwired battery back up, smoke, heat, and carbon monoxide alarms. With all relevant CE and BS standards and approvals, including BSI kitemark on the photoelectric smoke alarm. Offering excellent value for money, another range of quality products from the Contractor⁺ brand. Presented in retail friendly clamshell packaging.

All are complete with mounting plate, with surface mounted patress available separately (CP8003).



240V Mains Power Photoelectric Smoke Alarm

- CP8006

Photoelectric Smoke Alarm, Mains Power, Battery Back Up, with Hush Feature. Interlinkable with up to 40 CP8006 and CP8002. BSI Approved and Kitemarked.



240V Mains Power Heat Alarm

- CP8002

Heat Alarm, Mains Power, Battery Back Up, with Hush Feature. Interlinkable with up to 40 CP8006 and CP8002.



240V Mains Power Carbon Monoxide Alarm

- CP8007

Carbon Monoxide Alarm, Mains Power, Battery Back Up, with Hush Feature.



www.oneelectrical.com

HEAD OFFICE - ENGLAND

ONE Electrical Ltd
Bankfield Rd
Manchester
M29 8QH
England
Tel +44 161 703 2201
Fax +44 161 703 9939
sales@oneelectrical.com

DUBAI OFFICE

ONE Electrical Ltd
(MSS Electrical LLC)
PO Box 83608
Dubai
United Arab Emirates
Tel +9714 2691775;
Fax +9714 2659767
dubai@oneelectrical.com

BELFAST OFFICE

Omak Agencies Ltd
Unit 6C
Dundonald Enterprise Park
Carrowreagh
Dundonald
Belfast, BT16 1QT
Tel 02890 550 202
Fax 02890 550 203
belfast@oneelectrical.com

SOUTH AFRICAN & IRAQ OFFICE

OPENING SOON !!

PROUD INTERNATIONAL SUPPLIERS TO;

UK & IRELAND
MIDDLE EAST
CARIBBEAN
MALTA
CYRPUS
EUROPE
THE AMERICAS

