

**tebis KNX domovea**  
Intelligent visualisation - intuitive control





## KNX ... YZ

# Well thought through building automation


KNX is the worldwide standard in home and building automation. Established in 1990 by European manufacturers, including Hager, it has since proved itself worldwide a million times over. Now Hager is linking this state of the art technology with a brand new look. tebis KNX domovea is revealing the face of future building control and is making automated housing even more attractive, intuitive and versatile for your customers. Open up new business opportunities by linking together the worlds of KNX and IP. tebis KNX domovea makes it possible and easy!

### Inherently intelligent

tebis KNX domovea shows automation technology in a new light; to be precise: on the screen of any Windows® operated computer or mobile device. All the available building functions can be controlled using the intuitive user interface: Lighting, heating, ventilation, air conditioning, blinds and much more. One click and the current energy consumption is displayed. A second click and the user sees their IP-camera pictures on the screen, at home or on their iPhone using a special application. One push of a button and the whole house switches over to a pre-programmed status. One e-mail and, even though not present, the user knows what is happening in the house. Over the domovea Internet portal using the iPhone app, you can quickly and safely intervene; around the clock, from around the world.



### There right from the start

Without KNX there can be no automated house! The bus standard is the basic prerequisite for the use of tebis KNX domovea. If the KNX bus system is already installed, refitting with tebis KNX domovea is very easy: The compact domovea server, requiring just six unit places, is installed in the distribution board and wired using **quickconnect** . Once complete, your customers are free to enjoy the automated comfort with a new dimension and vision.

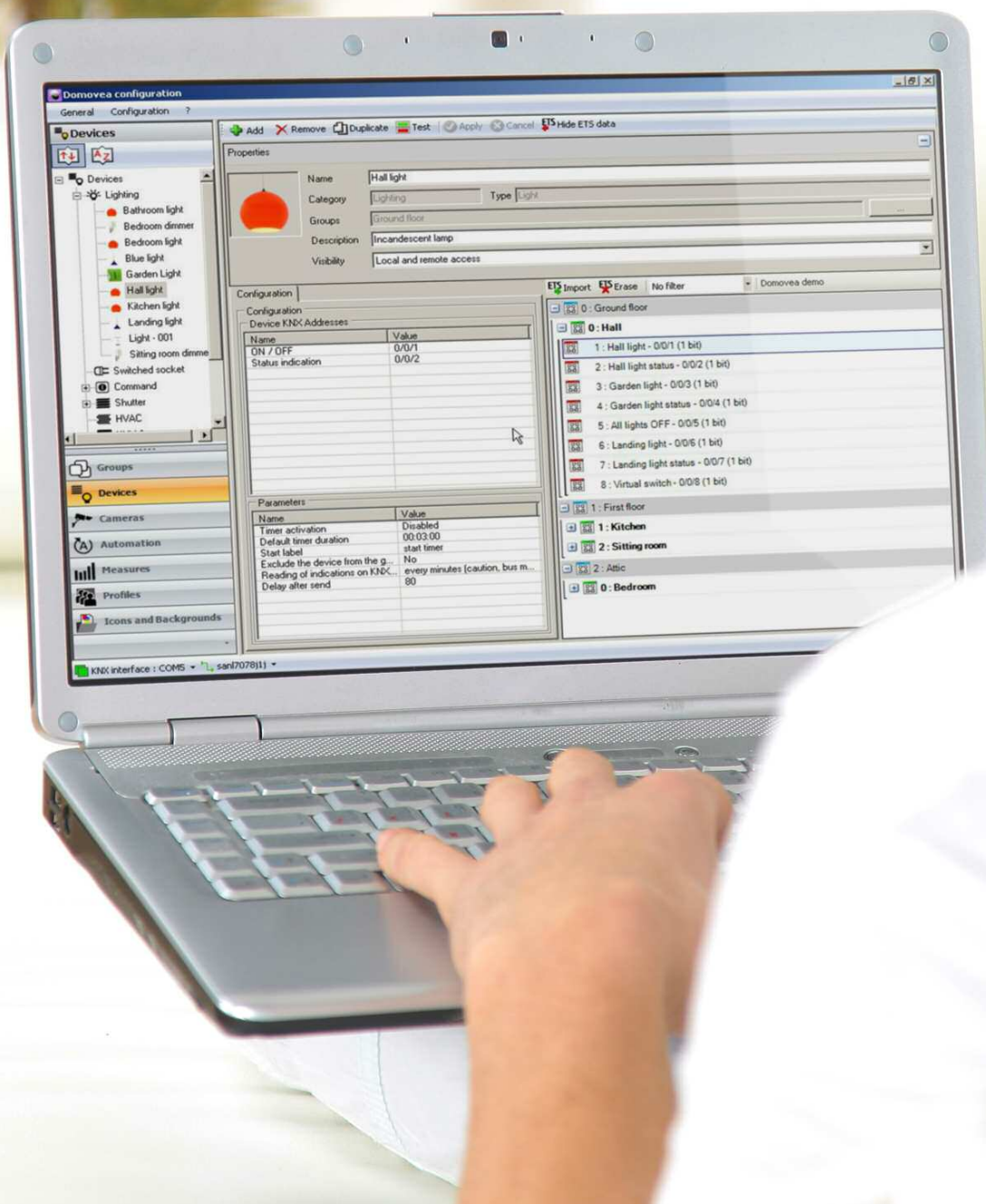
tebis KNX domovea offers you the unique opportunity, to think ahead with KNX, and to expand your business.



|                      |    |
|----------------------|----|
| Simple to configure  | 4  |
| Intuitive control    | 8  |
| Mobile use           | 12 |
| Easy installation    | 16 |
| Parts and technology | 20 |



simple  
to configure



# Simple to install. Hard to beat.

## Quick configuration in five steps

Intelligence is the quick coupling of thoughts. Thus one logic is built on another. tebis KNX domovea leads the way. So that you have little need to think about it, and your customer even less.

### Unbeatably fast

Previously it took many hours, if not days, to construct individual visualisations for building control systems. With tebis KNX domovea you are switching on the "electrotechnical turbo"! To be precise: the configurator. It allows rapid installation of the complete display using KNX data. All the data are imported, as usual, from ETS or from the coupling device TX100B and linked with the structure created.

### Unbeatably beautiful

In conventional display programs, each application must be individually installed. This takes time and causes stress. The automation software tebis KNX domovea takes this work away from you. The display interface is automatically generated from the group levels created and the devices are structured within these. Hence, we have left nothing to chance: The design of the user interface meets the latest ergonomic, visual and intuitive requirements and will be continually evaluated and optimised through tests with installers and users.

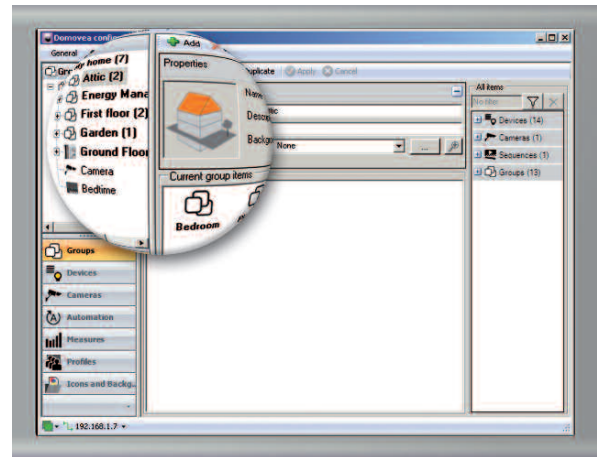


### Advantages:

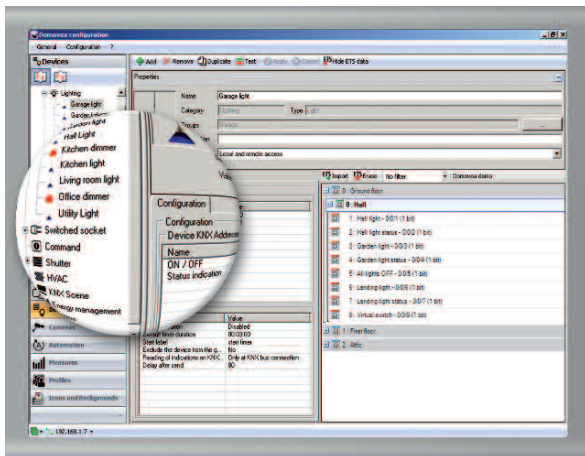
- Simple and quick creation of the user interface: ready for operation within around 10 minutes
- Rapid project importing from ETS or the TX100B coupling device
- Drag & Drop operations: simple relocation of the group addresses
- Simple creation of sequences, logic, time functions and scenes
- Integration up to ten IP cameras
- Inclusion of personal images and symbols (up to 20 MB image memory)



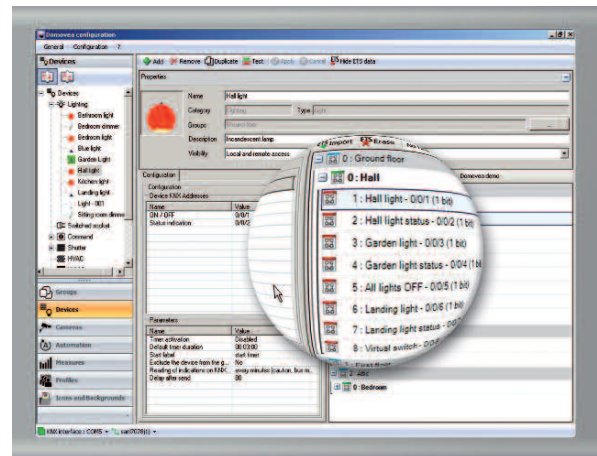
Starting conditions: A KNX System must be available for configuration of tebis KNX domovea.



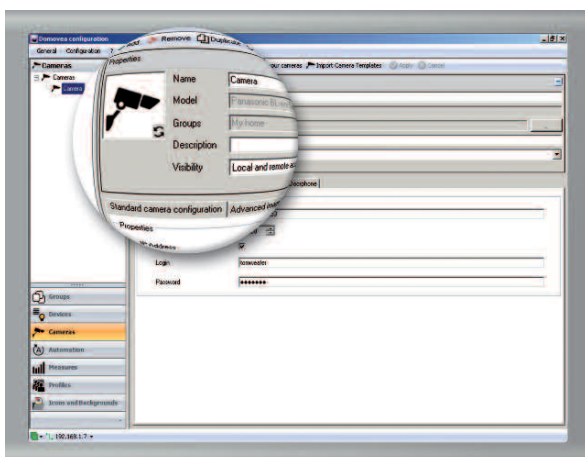
**1** First specify the building or group structure.



**2** Next, define the devices to be used and assign them to the corresponding rooms or groups.



**3** Now the ETS or TX100B data is imported and the group addresses are assigned by dragging and dropping the objects.



**4** Now create the IP cameras, if available, and specify which bus events will cause the camera images to be displayed, for example.



**5** Finally, save all the data. The user can now open the client and use the intuitive user interface.





intuitive  
control



**Everything at a glance**  
In the house overview, the individual floors and rooms appear as virtual function rooms. Central applications such as lighting and roller shutter and blind controls can be applied and controlled at this level using simple icons. The central functions are created automatically.

## The automated house presented on a "Tablet" Intuitive visualisation and control

Your customer is now in control! All the available tebis KNX functions can be obtained using the attractive user interface with its contemporary look, whether using a fingertip on a tablet computer or touch panel or using a mouse on a conventional home computer. The eye-catching icons can be understood immediately and intuitively operated. Thus tebis KNX domovea not only extends the possibilities for your customers but, above all, it simplifies them. Put another way, tebis KNX domovea can do more, and your customers can do less.

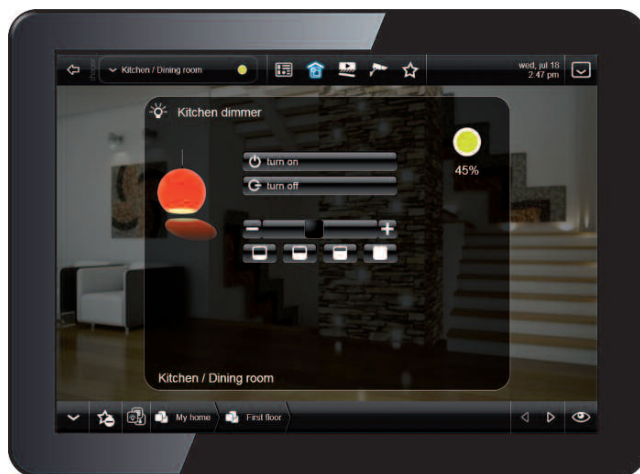
### From scenario to sequence

With tebis KNX domovea, you can call up complex scenarios very easily. Here, one command entered by the user simultaneously triggers several other commands. For example, the "Leaving home" scene switches all the lights off, closes the roller shutters and drops the temperature to an energy-saving 18 degrees. However, tebis KNX domovea goes further: Using logic sequences, chronological processes can be configured. By editing these processes, the user can at any time stop, alter or delete a sequence.

### From device to house

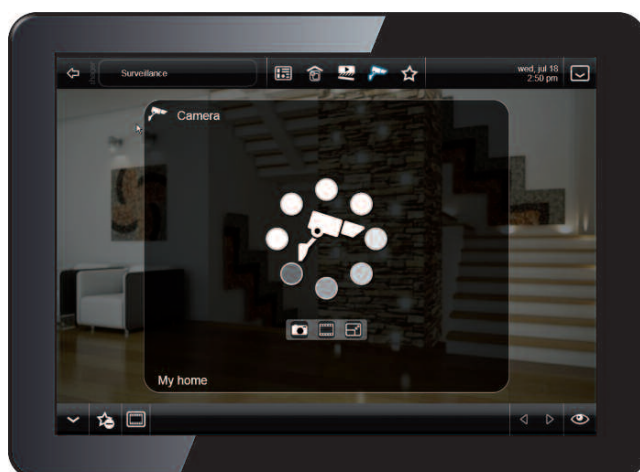
In addition, your customer not only has the individual functions at their fingertips but, if desired, the entire house. By activating the "House status" the entire property is transformed into the desired target state. Alongside the classic "At home" status, you can configure up to seven further modes, as required: e.g. "short absence", "long absence", "monitoring mode", "night mode", "guest mode", "do not disturb mode" and finally "manual shutdown".





### Everything at a click

Go one level deeper and the user comes to the individual rooms. There he can call up and alter all of the applied functions, individually. The current status of the outputs is displayed. All the rooms can be personalised by including your own images.



### Ten eyes see more than two

With tebis KNX domovea the user has the possibility, at home, to install low-cost camera surveillance: Up to 10 IP cameras can be included on the display. The cameras can also be integrated into sequences, to send an image or an e-mail, for example. This way you can address the key requirement of your customers, time!



### Always know what's going on

tebis KNX domovea makes energy consumption visible: The Hager energy visualisation displays the consumption values measured on the internal energy counters in an overview graphic, showing instantaneous values or values over a long time period such as days, weeks, months or years. The reference periods can be compared with values from the record file. This sharpens energy awareness and facilitates energy-saving.

# mobile

use



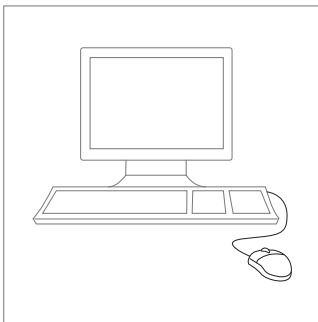


# Always in the picture. Available everywhere.

## At home

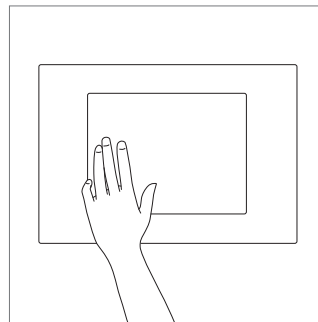
Intelligence is versatile! The intuitive user interface from tebis KNX domovea can be installed without problems on any Windows® compatible PC, be it a Touch Panel, notebook or conventional PC. Each client PC has access to the domovea

server over the local area network, providing all the necessary data. This gives the user access to their building functions from every room.



### Home computer

The domovea software can be used on any standard Windows® PC.



### Touch Panel

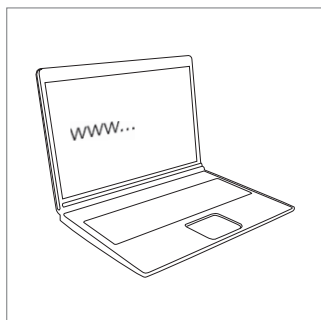
The Touch Panels from Hager are even more intuitive and ergonomic, it can be flushly embedded in the wall and blends perfectly into any modern home decor.



# At home and away

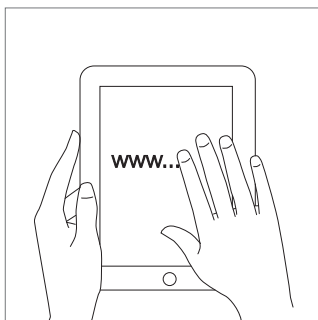
The user still feels like he is at home even when he's not there!  
This is because tebis KNX domovea is linked to the Internet.  
The user-friendly domovea Internet portal makes it possible

for the user to check his data and to alter any of the buildings functions. When irregularities occur or in the case of an alarm, tebis KNX domovea sends out e-mails, and the user can take action online.



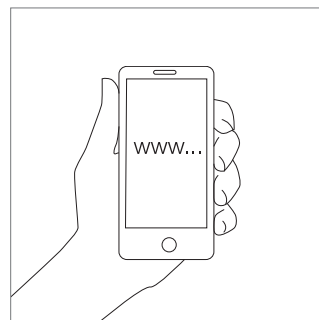
## **domovea Internet portal:** **www.domovea.com**

At any time, the user can access the building control over a safe connection, to switch the lights on and off, raise or lower blinds, view camera images or alter the status of the house.



## **Tablet PC**

Naturally, tebis KNX domovea can also be operated using portable Tablet PCs (with Windows® operating systems), at home over the WLAN or away from home via the domovea Internet portal.



## **Smartphones**

All domovea functions can also be comfortably monitored and controlled using a mobile or Smartphone, whether at home or away, again via [www.domovea.com](http://www.domovea.com).



## **"App to date" - with the iPhone and iPad app**

The new domovea, iPhone and iPad App can be downloaded from the Apple App Store. It allows both local operation via the house WLAN network, as well as external control via the Internet.

The domovea application is also available for Android phones on Android Market.



## **Energy savings**

With tebis KNX domovea and the Hager energy display.

# Easy

installation





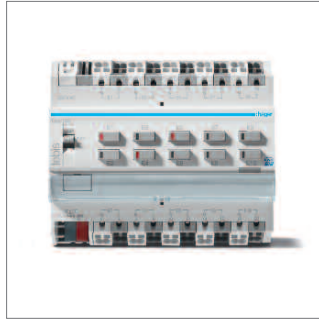
← 6 modules →

## Easy to install. Easy to configure.

The size of tebis KNX domovea is especially evident when you see the small devices. For instance, the compact domovea server required just six modular units on the DIN rail!

This makes it perfect for retrofitting into existing KNX installations. Once the server is clipped in, the appropriate cables simply need to be connected - and the KNX and IP worlds are connected with each other. Access is then achieved either in-house via the various clients or externally via the secure domovea Internet portal.





### Adding new functions

The automated house grows with its tasks! Using the relevant tebis KNX products, additional functions can be integrated into the building control - e.g. a weather station, individual room temperature controllers or dimmers.

With KNX domovea, your customers will have all the additional functionality immediately on the screen or in their hand.



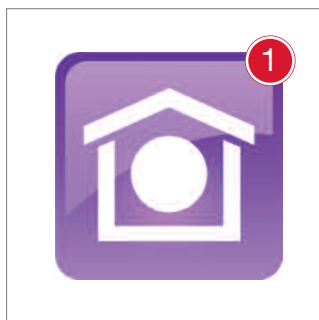
### From cabinet to switch

All tebis KNX functions can be called up via domovea as well as in the traditional way via switches and KNX touch sensors on the wall; making the automated house even more comfortable.



### domovea users see more

With tebis KNX domovea, up to ten IP cameras can be simply integrated into the building visualisation system. These send live images to any domovea terminal. Hence, at any time, movements in the garden or at the door of the house - e.g. wanted or unwanted guests - can be registered and controlled.



### Intelligence does not stand still

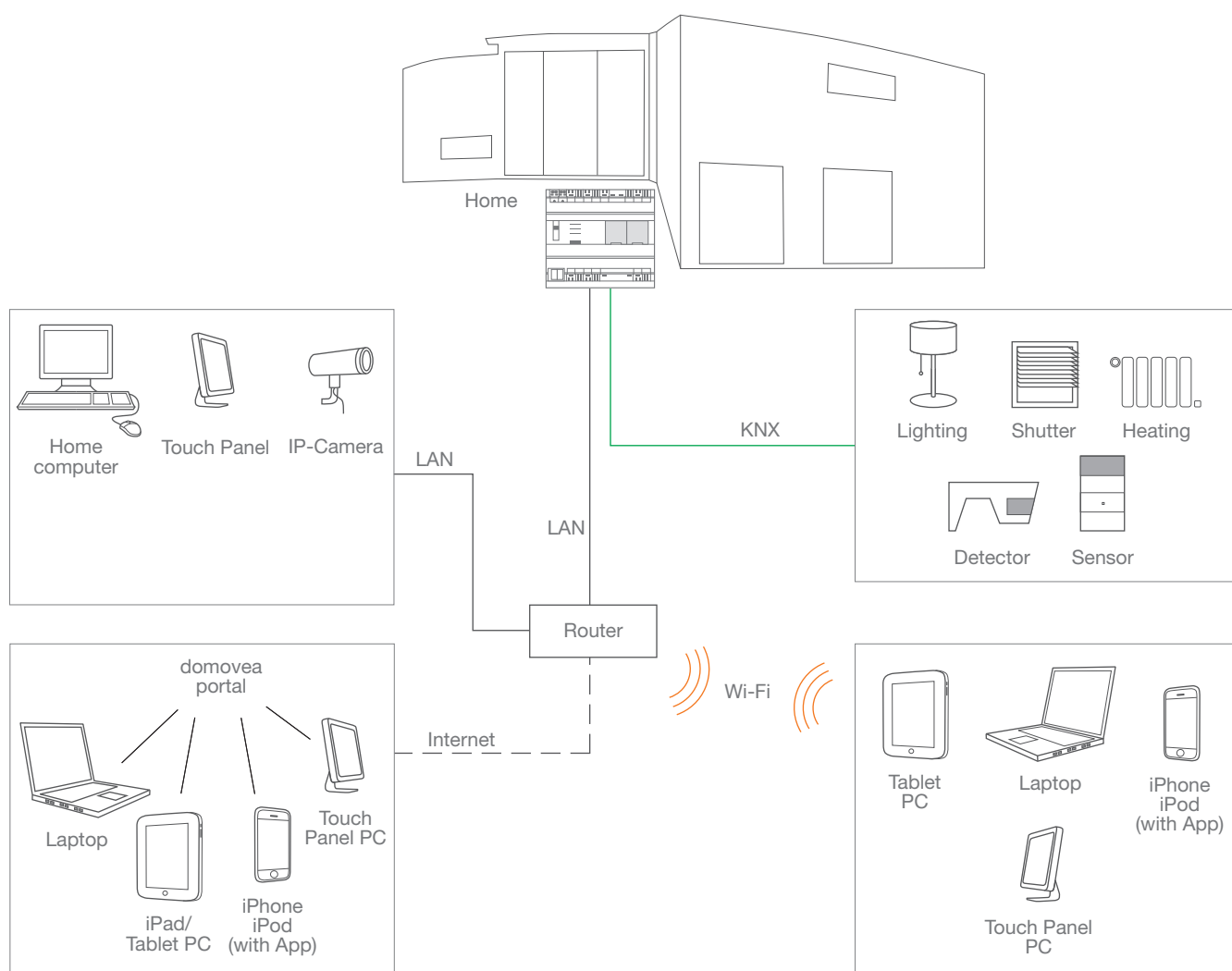
Software updates for tebis KNX domovea can be downloaded at any time from the Hager homepage and run on your customer's domovea server. In this way, your customer is always up-to-date.

Updates for the iPhone and iPad are available as usual in the App Store.



### Our tip:

tebis KNX domovea offers you the perfect opportunity to look up your existing KNX customers again and familiarise them with the expanded and improved offer. Hence new business opportunities open up for you with every free field on the distribution board!



## Smart solutions in your home

domovea allows you to control your home automation

Thanks to its intuitive interface, you can control devices such as lighting, shutters and heating... as well as monitor your energy usage.






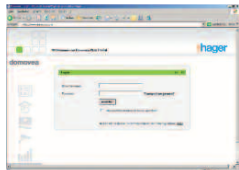
domovea is also accessible remotely over the internet through a secure portal, on iPhone and iPad through an app, and furthermore you can receive notifications via e-mail.

**Features:**

The tebis KNX domovea visualisation and control system connects the tebis KNX bus system with the IP world. This is provided by a server with modular design, which sits invisibly on the distribution board where it works silently and energy efficiently. All the data on the server can be accessed from any connected Windows® compatible client - whether it be a conventional PC, notebook or wall-mounted Touch Panel. The same functionality can be used as a software solution, without any hardware. Worldwide access is ensured via the Hager Portal.

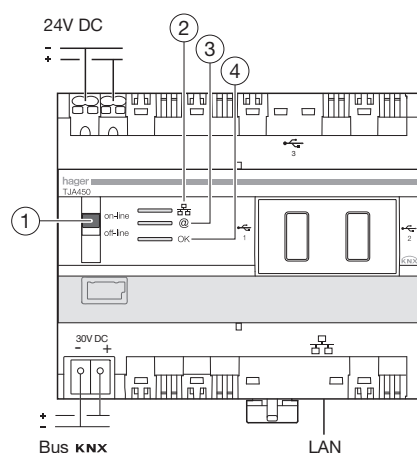
**Advantages:**

- Server in modular form or as a software solution
- Able to be updated via USB interfaces
- Intuitive user interface for display and control of:
  - Lighting
  - Blinds and roller shutters
  - Heating control
- Graphic display of energy consumption
- Connection of IP cameras
- Integrated logic and sequence module
- Worldwide access via the domovea Internet portal ([www.domovea.com](http://www.domovea.com))
- iPhone App for local or remote use.

|   | Description   | Characteristics  | Width in  17.5mm | Cat. ref.     |
|---|---|--|---|---------------|
| <br>TJD081  | <b>domovea system package</b><br>For installation of domovea in a KNX/IP environment  | Consisting of:<br>- TJA450 domovea server with remote access<br>- TGA200 power supply  |   | <b>TJA451</b> |
|   | <b>domovea system package + 8" touch panel</b><br>For installation of domovea in a KNX/IP environment   | Consisting of:<br>- TJA450 domovea server with remote access<br>- TGA200 power supply<br>- TJD080 touch panel  |   | <b>TJD081</b> |
| <br>TJA450 | <b>domovea server incl. software</b>  | - Power supply: 24 V DC<br>- Connections:<br>- KNX connectors<br>- 3x USB 2.0, Type A Jack<br>- RJ45 Connection<br>- <b>quickconnect</b> <br>- Configuration software and client on supplied USB memory stick | 6   | <b>TJA450</b> |
| <br>TJ701A | <b>domovea software server with USB/KNX interface</b>   | - domovea system software solution for installation on a Windows® compatible PC<br>- KNX/USB interface with integrated license key<br>- Server, configurations and client software on the supplied USB memory stick<br>- USB Connection cable, 1 m   |   | <b>TJ701A</b> |
| <br>TJ550  | <b>domovea remote access</b><br>Remote access to the domovea server via the secure Hager Internet portal ( <a href="http://www.domovea.com">www.domovea.com</a> ) | License key supplied on a USB memory stick<br>- The possibility to access the KNX project externally using an Internet browser or domovea iPhone App (not included in the supply)  |   | <b>TJ550</b>  |

|   | Description                      | Characteristics   | Cat. ref.  |
|---|----------------------------------|---|--|
|    | <b>domovea touch panel</b>       |   | <b>TJD080</b>  |
|    | <b>Mounting box</b>              |   | <b>TJW080</b>  |
|    | <b>Frames for 8" touch panel</b> | <ul style="list-style-type: none"> <li>- black</li> <li>- black glass with lines</li> <li>- black glass with alu border</li> <li>- white glass</li> <li>- polar white glass</li> <li>- stainless steel</li> <li>- aluminium</li> <li>- black glass</li> </ul> | <b>TJF080A</b><br><b>TJF080B</b><br><b>TJF080C</b><br><b>TJF080D</b><br><b>7594 03 01</b><br><b>7594 03 03</b><br><b>7594 03 04</b><br><b>7594 03 05</b> |
|   | <b>Voltage supply 24 V DC</b>    | <ul style="list-style-type: none"> <li>- Power supply: 230 V AC, 50 Hz    4</li> <li>- Output voltage: 24 V DC</li> <li>- Output current: 1.0 A</li> <li>- 4 PLE</li> </ul>   | <b>TGA200</b>  |
|  | <b>iPhone-App</b>                | The iPhone-App can be found using the search term domovea and downloaded from the Apple App Store.  |   |
|  | <b>iPad-App</b>                  | The iPad-App can be found using the search term domovea and downloaded from the Apple App Store.  |   |
|  | <b>Android-App</b>               | The Android-App can be downloaded from the Android Market   | <b>Purchase via Android Market</b>   |

TJA450 connection diagram



|    | LED status        | Meaning                                 | Fault clearance                           |
|----|-------------------|---|---|
| ②  | Not lit           | No network connection                   | Connect network cable                     |
|    | Red, continuous   | IP address conflict                     | Check the IP addresses use on the network |
|    | Green, flashing   | Waiting for IP address from DHCP server | -   |
| ③  | Green, continuous | IP address found                        | -   |
|    | Not lit           | No network connection                   | Connect network cable                     |
|    | Red, continuous   | Portal not accessible or access denied  | Check Internet connection                 |
| ④  | Green, flashing   | Connecting to portal                    | -   |
|    | Green, continuous | Portal connection established           | -   |
|    | Red, flashing     | Power supply problem                    | Check the power supply                    |
| OK | Red, continuous   | Defective device                        | Notify Hager technical support            |
|    | Green, flashing   | domovea server starting                 | -   |
|    | Green, continuous | domovea server ready for use            | -   |

TJA450 technical data

| Order No.                               | TJA450                      |
|---|-----------------------------|
| KNX Connection                          | KNX-Bus 30 V DC             |
| Auxiliary voltage                       | 24 V DC (TBTS, SELV, ZLVS ) |
| Power from the bus                      | 10 mA max., 30 V DC         |
| Power from the auxiliary voltage supply | 150 mA max., 24 VDC         |
| Ethernet network                        | 100 BaseT (100 Mbit/s)      |
| Bus connections                         | 0.6 - 0.8 mm <sup>2</sup>   |
| Power supply connection                 | 0.75 - 2.5 mm <sup>2</sup>  |
| Ethernet/IP network connection          | RJ 45                       |
| Operating temperature                   | 0° C —> +45° C              |
| Storage temperature                     | -20° C —> +70° C            |
| Protection rating                       | IP20                        |
| Dimensions (1 PLE = 17,5 mm)            | 6 PLE                       |

#### System requirements:

- Microsoft® Windows® XP/Vista/Windows 7/Windows Media Center
- Pentium processor with at least 600 MHz or equivalent
- At least 128 MB RAM, recommended 256 MB or greater
- VGA graphics card with at least 16 Bit colour depth (High Color) and a resolution of 1024 x 768 pixels
- Minimum available hard drive memory of 500 MB
- CD/DVD drive or network adapter

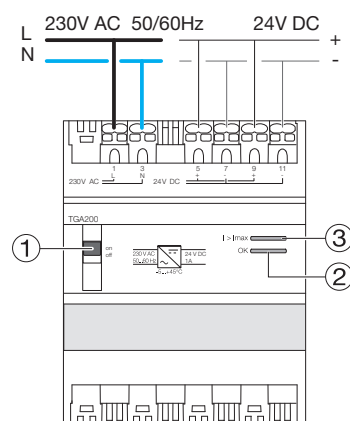
#### Capacity of functions:

- 100 groups (sections of buildings, rooms, areas, etc.)
- 500 devices (e.g. for lighting, blinds and sensors, etc.)
- 10 IP cameras (selected from a specified manufacturers' list)
- 50 sequences
- 30 Clients (Profile)
- Image memory for groups and devices, max. 20 MB

TGA200 technical data

| Order No.  | TGA200   |
|--|--|
| Dimensions (1 PLE = 17.5 mm)   | 4 PLE  |
| Supply voltage<br>50/60 Hz   | 230 V AC   |
| Dissipation max.   | 3.6 W  |
| KNX system voltage   | 24 V DC, 1A  |
| Number of outputs  | 4 PLE  |
| Measurement current  |  |
| Mains failure buffering  |  |
| Connection<br>Mains power supply<br>flexible<br>solid  | Connectors<br>0.75 - 2.5 mm <sup>2</sup><br>0.75 - 2.5 mm <sup>2</sup> |
| Bus  |  |
| Display/operation<br>Operating indicator<br>Overvoltage indicator<br>Reset indicator<br>Reset button | LED (Green)<br>LED (Red)<br>LED (Red)                                  |
| Ambient temperature<br>Storage<br>Operation  | -20°C to +70°C<br>0°C to +45°C   |

#### TGA200 Power supply





Hager Electro S.A.S.  
132, boulevard d'Europe  
B.P.3  
67215 Obernai cedex  
France

Phone: +33 (0)3 88 49 50 50  
Fax: +33 (0)3 88 49 51 44  
[www.africa.hager.com](http://www.africa.hager.com)  
[www.near-east.hager.com](http://www.near-east.hager.com)

