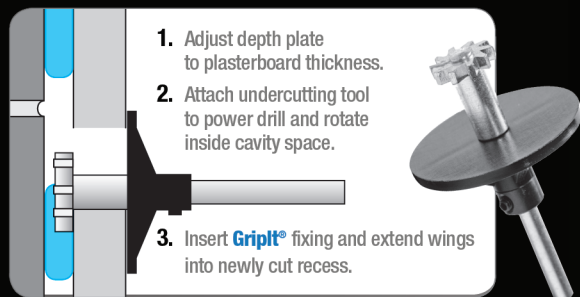


## • Undercutting Tool

Available in 15, 18, 20 & 25mm.

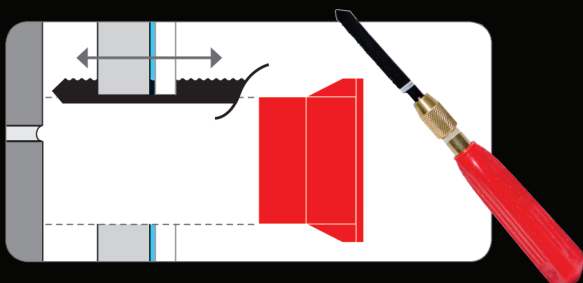
If securing to a dot & dab wall or insulated plasterboard you may need our undercutting tool to create space for the fixing wings.

Visit our website for video instructions.



## • Griplite® Tile Saw

**Griplite®** use anti-rotation blades to help secure the fixing. Use our **Griplite®** Tile Saw to create space for the blades in kitchen and bathroom wall tiles.



UK Building Products Ltd, Unit C1-C3 Ashville Centre,  
Commerce Way, Melksham, Wiltshire, SN12 6ZE, UK

Tel: 44 (0) 8456 800 215 Fax: 44 (0) 8456 800 216

'Griplite' is the trading name  
of UK Building Products Ltd.  
Registered in England & Wales No 6637395

Patent No: GB2484771 dated 11/09/2012  
USA Patent No: US13/207326

**GRIPIT**  
The World's Ultimate  
Plasterboard Fixing

# GRIPIT®

## The World's Ultimate Plasterboard Fixing

- Takes heavier loads
- Fits 9.5-15mm plasterboard
- Removable and reusable
- Easy and quick to install
- New quick-fix design
- 100% Universal

One fixing  
holds up to  
**225kg**



[www.griplitfixings.com](http://www.griplitfixings.com)

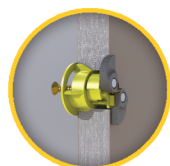


# The revolutionary new fixing design that's easy and quick to install

**GRIPIT**  
The World's Ultimate  
Plasterboard Fixing

**Gript**® Fixings are designed for use with all types of plasterboard installations. Using their uniquely designed slim gripping wings, **Gript**® Fixings fold out in the gap behind the board and produce the most effective and secure fixing in the world today.

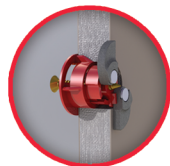
## Multi purpose sizes:



### ● Yellow 15mm **Gript**®

Ideal for bathroom accessories, towel rails, ceiling fans, wall lights, small shelving, curtain rails, Venetian blinds, picture frames and mirrors

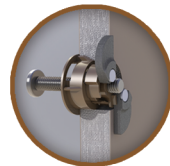
Max load 142kg / Safe load 71kg \*



### ● Red 18mm **Gript**®

Ideal for lighting tracks, shower units, audio visual equipment, AC units, large towel rails, bathroom fixtures and large shelf brackets

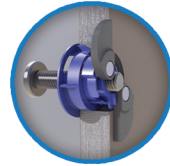
Max load 148kg / Safe load 74kg \*



### ● Brown 20mm **Gript**®

Ideal for mounted gaming units, audio visual equipment, speakers, ceiling lights, chandeliers, radiators, bathroom fittings, heaters and cabinets

Max load 185kg / Safe load 93kg \*



### ● Blue 25mm **Gript**®

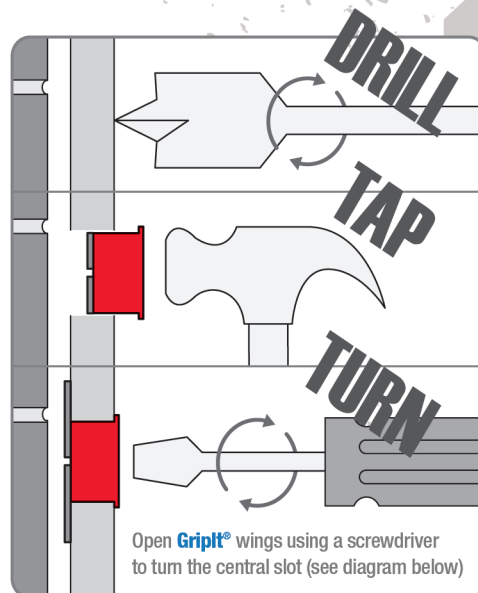
Ideal for kitchen cupboards, water heaters, wall mounted TV's, large radiators, PC screens, wall mounted home entertainment systems, projector screens and large AC units

Max load 225kg / Safe load 113kg \*

\* Tested on 15mm thickness plasterboard.

Never fix to damp, damaged, weak walls or ceilings.  
For accessory tool and fixing videos including weight loading guides please visit: [www.gripitfixings.com](http://www.gripitfixings.com)

- Supports heavier loads
- Re-use indefinitely
- Auto-adjusts to lining thickness
- No vapour barrier damage
- Fits insulated backed plasterboard
- Suitable for 9.5-15mm plasterboard
- Fits plasterboard laminates
- Fits to ceilings without timber blocking
- Fits dry lining wall constructions
- No insulation fibre entanglement
- Cannot over-tighten
- Less space required behind the plasterboard
- Easy & quick to install
- Saves you money, materials, labour & time
- 100% universal



With unique screw driver slot design

For maximum strength, please ensure the **Gript**® wings are positioned vertically when opened

[www.gripitfixings.com](http://www.gripitfixings.com)

