

# GEWISS



**DOMOTICS**



**POWER**



**BUILDING**



**LIGHTING**

**PRODUCTS ALBUM 2015**



## THE GEWISS WORLD

GEWISS is an **international** leader in the production of systems and components for low voltage electrical installations. The fact that development is seen as a constant management feature has permitted GEWISS to assert itself as a reference interlocutor, offering the market an integrated electrical system with over 20,000 products for **domotics, energy and lighting**.

**GEWISS**

# An integrated system to help your projects take shape



## DOMOTICS

The domotic systems offer cutting-edge solutions for smart home and building management and control, guaranteeing safety, comfort and energy savings along with Italian design.



## POWER

The technologically advanced range of modular and moulded-case devices joins the vast range of distribution boards and cabinets, enclosures and combined boards to create the GEWISS Protection System.





## BUILDING

The GEWISS connection and distribution system includes a technologically advanced range of junction boxes, enclosures and distribution boards, as well as devices for industrial connections.



## LIGHTING

Lighting systems designed for every room, area and location. Solutions that embrace LED technology to meet the requirements of industrial and commercial sector contexts, sport facilities and emergency lighting.

**GEWISS**



## DOMOTICS

The domotic systems offer cutting-edge solutions for smart home and building management and control, guaranteeing safety, comfort and energy savings along with Italian design.

**GEWISS**

# The Chorus System

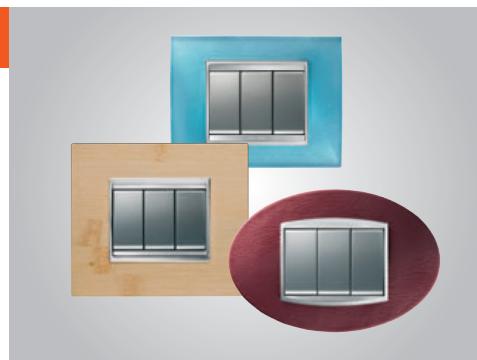
## THE INTERNATIONAL DOMOTIC SYSTEM

CHORUS is GEWISS' international system for creating a wide range of functions (light control, climate control, roller shutter movement, burglar alarms, etc.) in the residential and commercial sectors, choosing from a variety of technologies: conventional, RF and KNX BUS (Home&Building Automation), with a choice of finishes thanks to the plates in 6 different shapes and the components in 3 colours (white, black and titanium).



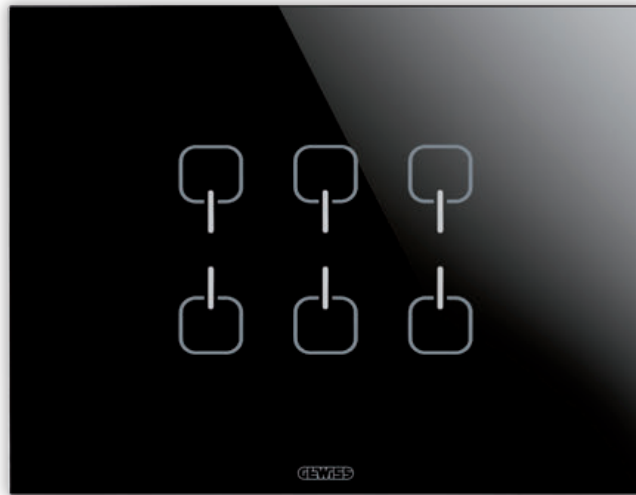
## ONE, GEO, LUX, FLAT AND ART

One and Geo, made of technopolymer, are distinguished by their classical design and clean lines. Lux, Flat and Art, exclusive and refined, they blend with their surroundings thanks to their shape and fine materials (wood, leather, glass, technostone and metal).



## ONE, GEO AND LUX INTERNATIONAL

Resistant materials, classic forms, refined lines with high-tech spirit, the plates add a touch of harmony and beauty to all walls at your home. Suitable for round and square flush-mounting boxes, they offer horizontal and vertical solution with a centre distance of 57 and 71mm.



## THE KNX BUS SYSTEM

The Home&Building Automation range offers the KNX BUS system - the ideal solution for both homes and large buildings. An advanced control system using the KNX protocol (the European Standard for data transmission and management in building automation contexts). The KNX BUS is an open solution, and as such it offers an important guarantee of compatibility between the products of different manufacturers.



## ICE

The ICE plates, made fully out of glass, are available in three versions: ICE for modular devices, ICE Touch for touch control devices and ICE Touch for KNX touch push-button panel modules.



## KNX EASY SYSTEM

A simplified configuration system of the KNX Easy devices in which programming is done using PC software, developed by Gewiss, with an intuitive graphic interface. It makes it possible to configure the system off-line.

# Home and Building Automation

## KNX DOMOTIC SUPERVISION

The Gewiss domotic command range, currently represented by the Master Ice, Naxos Domo and Naxos Combi touchscreen panels, now includes an innovative selection of apps for the local and remote management of the domotic system by means of mobile devices (tablets and smartphones). The touchscreen panels and apps can be used as supervisors in Home & Building Automation systems, offering groundbreaking control solutions along with refined lines and simple, intuitive graphic interfaces.



## KNX TEMPERATURE ADJUSTMENT

Comfort, energy savings and design: the new Chorus flush-mounting devices for temperature adjustment (timed thermostats, thermostats, touchscreen thermostats with a glass plate, probes and sensors) allow you to manage the temperature and degree of humidity in every room in the smartest possible way, combining advanced functions with extreme elegance.



## KNX ENERGY METERS

Gewiss has a range of single-phase and three-phase digital energy meters for measuring energy and active/reactive power (absorbed and supplied). Thanks to these measurements, KNX system supervisors are able to monitor the electric consumption trend in the home.







## SOLUTIONS FOR VIDEO ENTRYPHONES

City Vision is the new range that completes the GEWISS offer for video entryphone and domotics, enabling the creation of complete, practical systems ranging from the individual home to extensive residential complexes, from a simple entryphone to integration with the most modern technologies. The City Vision system is distinguished by a particularly refined, elegant design and high quality and reliability standards. The system, which is based on consolidated 2-wire technology, is characterised by its comprehensive functions, rapid wiring and installation flexibility. It combines perfectly with the KNX domotic system, thanks to the Master Ice and Naxos Combi touchscreen panels.



## INDOOR MONITORS

In order to satisfy every requirement, taste and financial budget, a wide range of traditional positions is available, such as entryphones with a handset or speakerphone, video entryphones with traditional button keys, as well as a range of technologically advanced devices equipped with touch button keys or a touch-screen display.



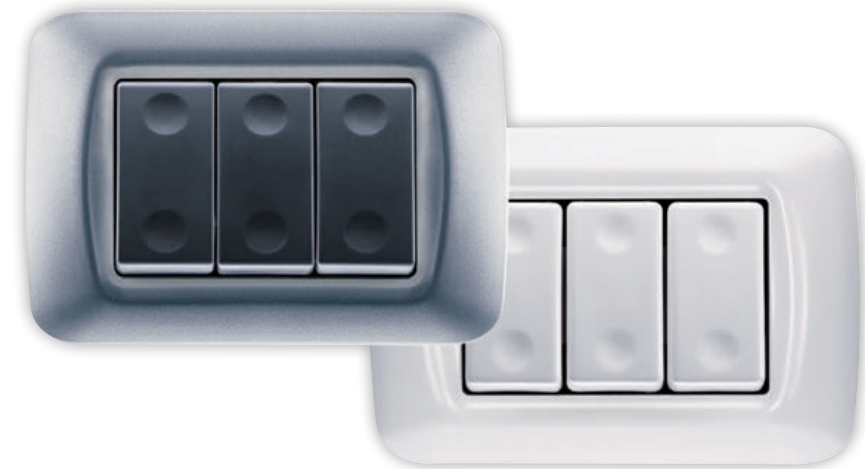
## OUTDOOR STATIONS

A range suitable for systems installed in small single and two-family homes or for large sized solutions, such as for condominiums, residences, and advanced commercial sector buildings. Available in only audio as well as audio/video versions and made of high quality materials that ensure an IP54 degree of protection.

# System domestic range and 24 SC boxes

## SYSTEM

A universal system of modern plates divided into two ranges characterised by endless creative solutions and a vast range of products in 14 colours. The System White range, with white components and a glossy finish, is designed to ensure the maximum application versatility. The System Black range, with its black components and satin finish, combines practicality and elegance to offer the best integration with any type of furnishings.



## SYSTEM RF

The RF command and control system contains devices that integrate perfectly with the conventional electrical system, extending its functions without any need for masonry work.



## 24 SC

Surface-mounting and flush-mounting boxes for masonry or for mobile/plasterboard (Green Wall) walls for the domestic range. The distribution outlet boxes for floor-mounting installations can be personalised in terms of capacity, external design finish, and internal fittings (they take both System range components and DIN rail devices).





## 27 COMBI

A complete, versatile system of modular containers, perfectly integrable in the SYSTEM domestic range and able to meet the high protection installation requirements of the residential, commercial and industrial sectors. The 27 COMBI range - in the watertight version with an IP55 degree of protection - is recommended for all outdoor applications subjected to severe atmospheric conditions.



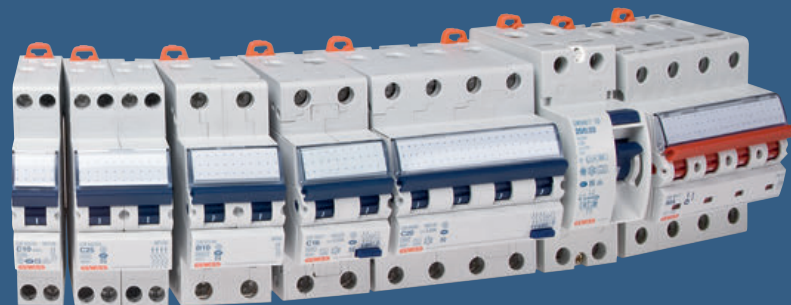
## 38 LAN

A complete, integrated range of products for the LAN structured network cabling. A solution allowing quick configuration and reduced installation times.



## 28 SPIC

Range of plugs, sockets, multiple adapters and trailing socket-outlets for the most common power take-off needs in the domestic environment.



## POWER

The technologically advanced range of modular and moulded-case devices joins the vast range of distribution boards and cabinets, enclosures and combined boards to create the GEWISS Protection System.

**GEWISS**

# Modular and moulded-case circuit breakers

## 90 RESTART

In the event that the automatic circuit breaker trips, the ReSTART devices restore the power supply quickly, but only after checking the system status. In addition, the Autotest function periodically tests the functioning of the residual current circuit breaker protection without disconnecting the system from the power supply. The range includes 2-pole and 4-pole versions (also PRO and TOP for professional applications).



**ReSTART**  
AUTOTEST



## 90 RCD

The 90 RCD range includes the MDC monobloc compact residual current c.b. with overcurrent protection, the BD and BDHP add-on modular residual current devices for MT and MTHP miniature circuit breakers, and the SD residual current circuit breakers.



## 90 AM

The 90 AM range consists of auxiliaries for circuit breakers and many modular accessories for protection, command, programming, measurement and signalling in electric systems.







## 90 MCB

The 90 MCB modular circuit protection devices offer a wide range of models to meet any overcurrent or short-circuiting protection requirement in all domestic, industrial and commercial applications. The range includes compact MTC, conventional MT and high performance MTHP miniature circuit breakers.



## 90 PV

The 90 PV range is able to satisfy the most varying photovoltaic plant engineering requirements, from the residential context to the commercial/industrial sector. The range offers pre-wired string boards and specific modular products in DC.



## MTX AND 97 MSS

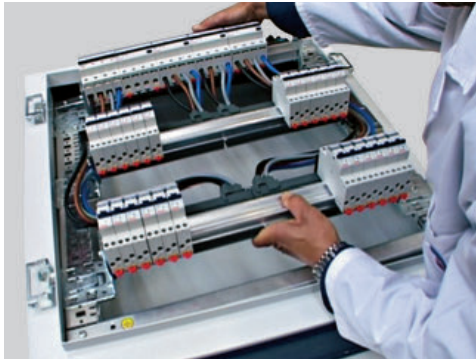
The MTX and 97 MSS ranges are the ideal solution for the protection, control and isolation of advanced industrial and commercial systems. They are robust, reliable and offer considerable capacity in terms of breaking capacity. They can be integrated with the boards of the 47 CVX range.



# Distribution boards and enclosures

## 47 CVX 160 E

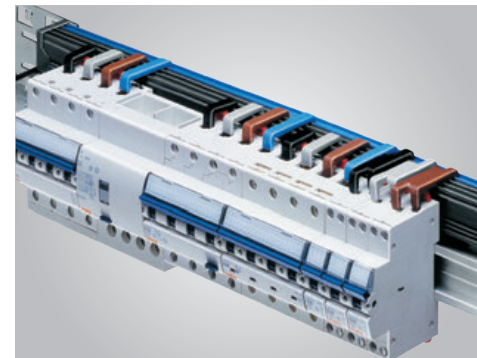
Monobloc surface-mounting boards up to 160A, with an extractable frame and an IP30-40-55-65 degree of protection. Thanks to the extractable frame and quick connection of brackets, rails and functional profiles, very quick assembly is possible.



## 47 CVX 160 I

Flush-mounting board up to 160A, with an extractable frame and an IP30-40 degree of protection.

The particularly refined design and limited overall dimensions make the CVX 160I boards suitable for advanced commercial environments.



## 47 BUSBAR

Quick dividers for modular and moulded-case circuit-breakers up to 400A. Distribution systems up to 1600A with shaped and flat busbars.



## 47 CVX 630 K

Modular surface-mounting and floor-mounting boards up to 630A, with an IP40-43 degree of protection. Thanks to the “completely open structure”, board wiring operations are quick and easy.



## 47 CVX 630 M

Monobloc surface-mounting and floor-mounting boards up to 630A, with an IP55 degree of protection. CVX 630 M uses the same installation kits as the modular and moulded-case devices and accessories of the CVX 630 K modular boards.



## 47 CVX 1600

Modular cabinet for protection systems up to 3200A, with an IP31-41-65 degree of protection and a form of segregation up to 4B. Starting from a pre-configured structure, it is possible to create any type of cabinet.



## BUILDING

The GEWISS connection and distribution system includes a technologically advanced range of junction boxes, special containers, enclosures, distribution boards as well as devices for industrial connections.

**GEWISS**



# Plugs and socket-outlets IEC 309 Standards

## 60/61/62/63 IEC 309

The range consists of industrial plugs and socket-outlets in various versions: mobile or fixed, surface- or flush-mounting, straight or 90°, IP44 or IP67. The range is distinguished by the innovative IEC 309 HP (HIGH PERFORMANCE) range from 16 to 125A: mobile plugs and socket-outlets and fixed 10° flush-mounting socket-outlets (versions with quick spring wiring and screw wiring from 16 to 32A and versions with indirect screw wiring from 63 to 125A). HIGH PERFORMANCE mobile plugs and socket-outlets with also IP68/IP69 degrees of protection.



## 64 IEC 309

Multipliers and adapters with different amperage and pole combinations: the versions with two or three outputs offer different power take-off solutions in the event of a temporary need for several take-off points.



## 44IB

Horizontal interlocked switched socket-outlet with an IP44 degree of protection for power take-off in the commercial sector and closed environments. From 16 to 32A, with or without fuse protection, for surface-mounting or flush-mounting installations, or on 68Q-DIN boards.







## 67 IB

The vertical interlocked switched socket-outlets are made of high performance blue thermoplastic materials to guarantee good resistance to external agents over time, with an IP67 degree of protection. They revolutionise the protection system with the integration of the 16/32A miniature circuit breaker and the new 16/63A fuse-holder system.



## 66 IB

The materials used and the IP66 degree of protection together ensure an optimum performance in heavy duty contexts. The versions with and without fuses, or with a 6-module DIN rail, can be installed on surfaces or modular bases.



## COMBIBLOC

The COMBIBLOC compact socket-outlets, with their range for electrical systems from 16 to 32A (IP44 and IP55), are the ideal solution for applications in small environments, especially in the commercial sector.

# 68 Q-DIN distribution boards

## 68 Q-DIN

The new system of industrial boards for energy and command distribution contains 46 versions (from 5 to 20 EN 50022 modules), both empty and wired but all complying with Standard EN 61439 and with an IP65 degree of protection.



## 68 Q-DIN ASD

The 68 Q-DIN range of wired boards contains 4 different modular structures to meet every need, with the possibility to personalise the board with IEC 309 socket-outlets from 16 to 63A.



## 68 Q-DIN

The wide range of accessories (pre-arrangement for emergency push-button, transportation handle, pole coupling, surface-mounting brackets and mobile support) means the distribution board can be adapted to suit any situation.



## 68 Q-BOX

Thanks to the new interchangeable panels inside the board, the number of possible configurations is increased, offering up to 12 interlocked switched socket-outlets in a single board and up to 60 DIN modules for electric divisions.



EN 62208



## 68 Q-DIN AND 68 Q-MC ACS

The 68 Q-DIN and 68 Q-MC ACS wired boards are designed for end distribution on construction sites. Thanks to the GEWISS pre-established construction system, they can be personalised according to individual requirements.



## 68 QP ACS

The GEWISS range for construction sites is completed with the 68 QP distribution boards from 125 to 250A, equipped with emergency push-button, transportation handles, surface-mounting brackets and key-operated safety lock.





# Energy and service distribution terminals

## 68 Q-MC 16-63

The 68 Q-MC terminals are the ideal solution for energy, water and signal distribution in ports, campsites, urban areas and industrial sites. Their elegant style and attention to safety standards make them a high quality product. They can also be equipped with an electronic system to control and record consumption levels, and with a lighting KIT using LED technology.



## 68 Q-MC 63X

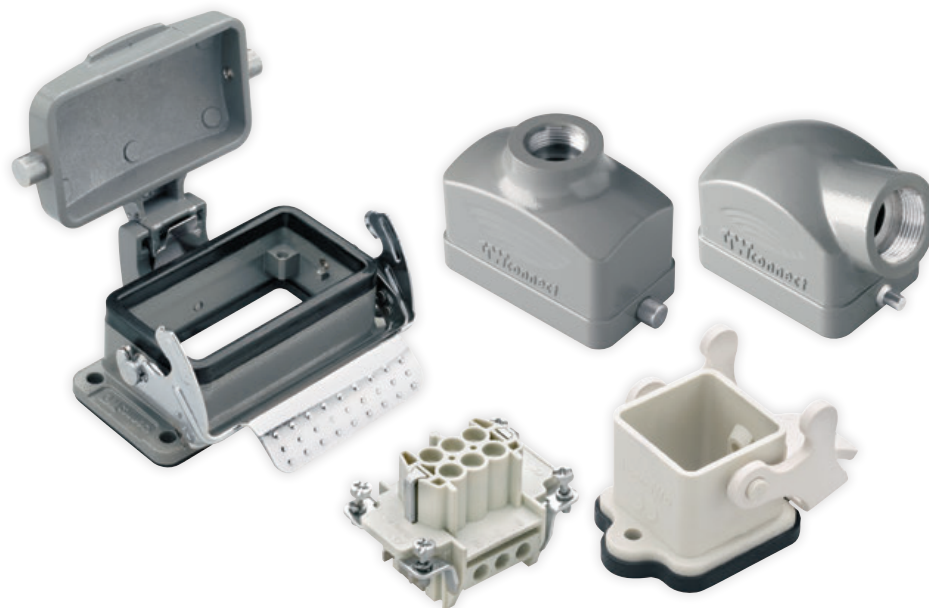
The steel terminals bring together excellent design and top technological performance. Their insulating coating eliminates the danger of electric shock and the need for earth connection tests.



## 68 Q-MC 125-200

The high capacity terminals allow energy take-off with industrial socket-outlets or terminal block output up to 400A. Versions with an electronically interlocked switched socket-outlet - 250 and 400A. Equipped with retractable doors for protection against the risk of jolts, a key-operated lock can also be applied.





## GW CONNECT

The GW Connect range contains 2000 articles subdivided into multipolar connectors, metal accessories and boxes, guaranteeing a complete solution for all disconnectable power and signalling connections in industrial environments.



## 70 RT

Rotary switches for command and emergency, in the surface-mounting version from 16-63A with boxes in insulating material, or 16-160A in metal. There are also versions for the electric board.



## ATEX

A line of products for potentially explosive environments, consisting of switch disconnectors in box, junction boxes, cable glands, watertight luminaires and discharge floodlights.



# Boards for automation and distribution

46

The watertight surface-mounting boards for automation and distribution are available in 4 types of material: technopolymer (44 CEP), thermosetting fibreglass (46 QP), painted metal (46 QM) and stainless steel (46 QX). All the QP, QM and QX boards are resistant and, thanks to the Fast&Easy accessories, quick and easy to assemble.



52 FS

Professional range of ties for application in boards, enclosures and junction boxes. There are 6 different product lines: from the PA 6.6 versions for wiring, to the L.T.R. PA 12 versions for outdoors.



74 PS

System of push-buttons, selectors and indicators with 22mm diameter. The 74 PS range allows you to control the status of operations and equipment, guaranteeing high safety standards.







## 40 CDK

This range of modular enclosures and boards is available in versions from 4 to 72 modules. With their ample internal space, the 40 CDK enclosures guarantee a high degree of protection (IP65) and impact resistance; they are characterised by the unhookable transparent door that opens to over 180° and can be combined with a cylinder safety lock.



## 40 CD AND 40 CD<sub>E</sub>

The 40 CD range includes enclosures and distribution boards (watertight, decorative, and protected without door) for the domestic, commercial and industrial sectors. 40 CD<sub>E</sub> is a range of enclosures and distribution boards for foreign markets, complying with the specific regulations of each individual country.



## 42 RV



Watertight enclosures for emergency operations, available in 5 versions and 2 colours (Red RAL 3000 and Grey RAL 7035); can be equipped with safety and alarm devices. The IP55 degree of protection means they can be used in all sectors. Now with even greater configuration possibilities, with the chance to assemble several contacts without the need for further accessories.

# Flush-mounting columns, distribution boards and enclosures

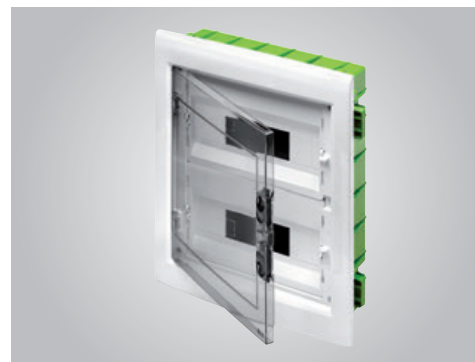
## DOMO CENTER

DOMO CENTER transforms the domestic systems into furnishing accessories: a modern design solution that blends with the existing context, centralising and rationalising the existing services - from the most traditional to the most advanced - in a single point. Also available with personalised design finishes, including the characteristic full-mirror version.



## CENTROSTELLA

A solution for providing homes and the small-scale commercial sector with structured network cabling. The Centro Stella enclosure (Home Networking Enclosure) houses external network terminations (copper/optic fibre) through a hybrid socket-outlet and, via specific pockets the distribution devices, from which the connections depart to the points of use.



## 40 CDKI GREEN WALL

The 40 CDKI GREEN WALL flush-mounting enclosures and boards, with a smoked transparent door, are offered in 5 sizes, from 12 to 72 modules. Ideal for applications in the residential, commercial and industrial sectors in lightweight and plasterboard walls. The back-mounting boxes are equipped with specific tabs for fixing on a metal frame.



## DECORATIVE 40 CDi

The decorative enclosures stand out due to their modern, linear, refined design coordinated with the shapes and colours of the CHORUS domestic range. They offer excellent design integration in both the residential and commercial sectors. Available in versions from 4 to 36 modules, and in 4 different colours to meet the most demanding design needs.



## 40 CDKi AND 40 CDi

The 40 CDKi modular enclosures and boards come in 10 sizes, from 2 to 72 modules, with a blank or smoked transparent door. The 40 CDi range is completed with the CHORUS enclosures and the enclosures protected with a blank door.



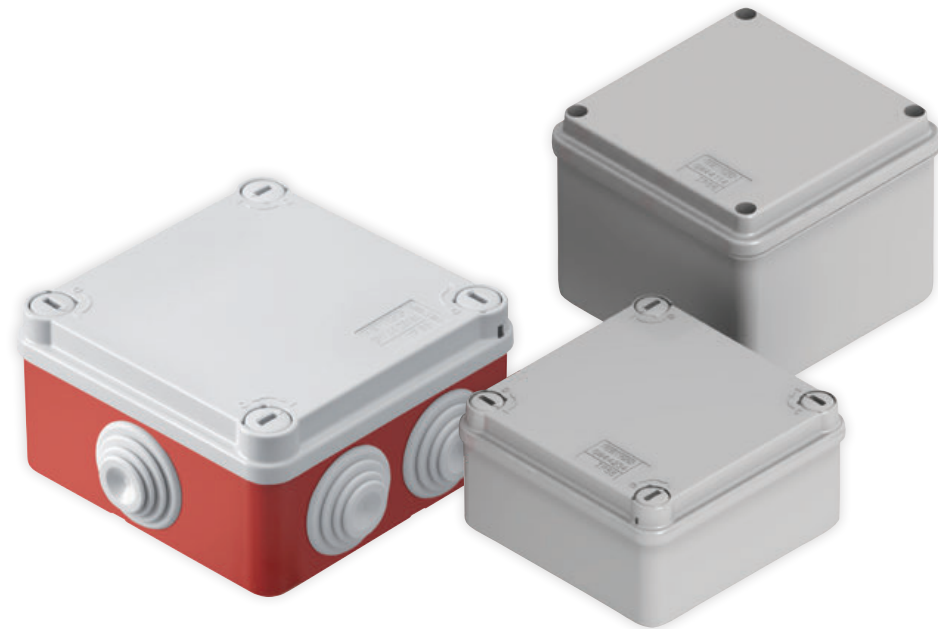
## 40 CDi AND 48 PTC

Apart from the enclosures for plasterboard walls, with metal door and frame and base with a self-extinguishing level of GWT 850°C, GEWISS also offers watertight modular enclosures of the 48 PTC range with an IP55 degree of protection, for installation in technical rooms.

# Surface-mounting junction boxes

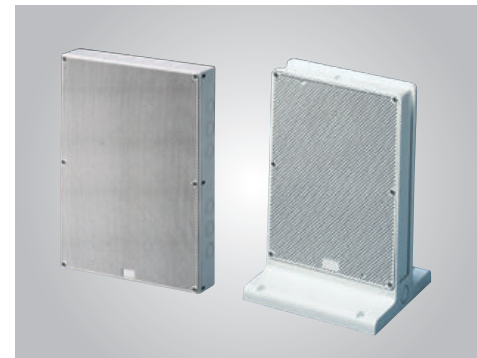
## 44 CE

Watertight boxes up to IP56 for ordinary junctions, special and industrial uses, made of technopolymer (in halogen-free material) - GWT 650°C and GWT 960°C. The range includes 11 sizes with smooth walls or cable glands with quick input. Lids that may be shallow, deep, blank or transparent, and with conventional or ¼ turn screws. Also available with a high capacity back-mounting box (effective depth up to 119mm) for creating high electrification systems thanks to the insertion of conduits up to Ø 50mm.



## GW CONNECT

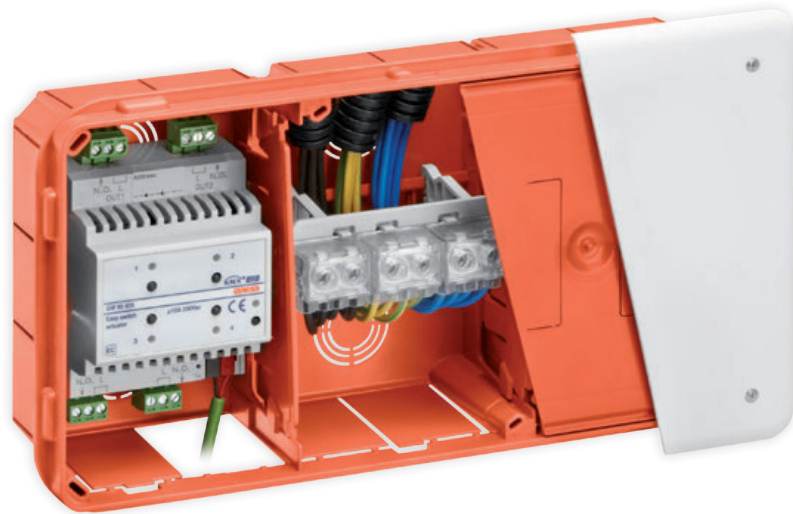
The die-cast aluminium boxes are suitable for energy distribution in all industrial environments and in special environments too (ATEX versions). They can be combined with back-mounting plates in galvanised steel.



## 42 TV

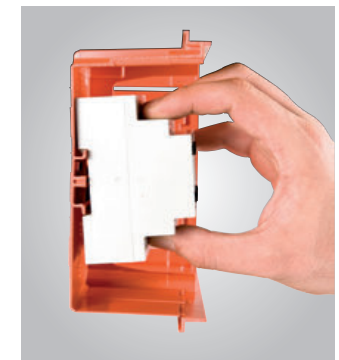
Support bases for electronic equipment, interlocked switched socket-outlets, indicators and push-buttons. Ideal for the remote control of automatism and for energy distribution in the industrial environment with watertight floor-standing distribution pillar.





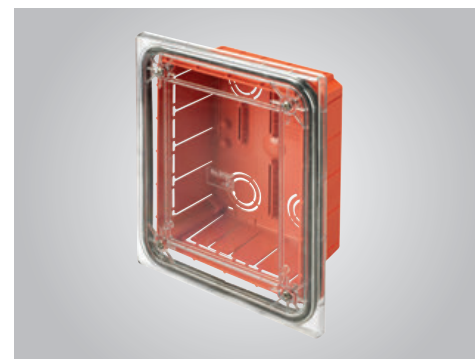
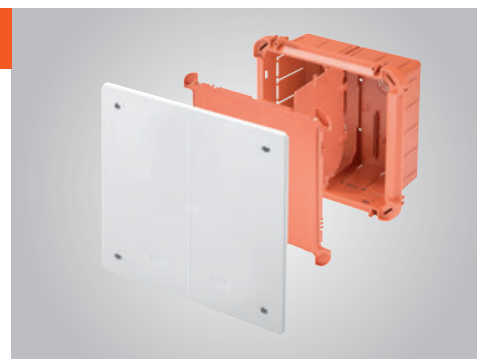
## 48 PT / PT DIN

The most complete system of flush-mounting modular boxes for junction and connection available in 11 sizes. With a DIN rail created on the back-mounting box, available in 6 sizes, they are ideal for domotics and for applications in the residential and commercial sector.



## 48 CM

High capacity, deep junction and connection boxes, ideal for junction along the system uprights. The boxes have a protective technopolymer shield that acts as a mortar-guard, paint-guard and electro-acoustic insulation.



## 48 PTC

Flush-mounting system with IP55 degree of protection, including junction boxes plus enclosures and boards for control and distribution. Ideal for special applications in technical rooms and damp environments. Mortar-guard supplied.



# Flush-mounting system for lightweight and plasterboard walls

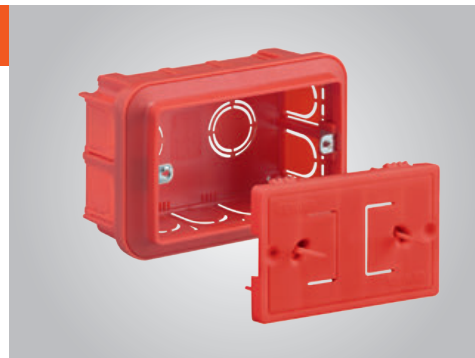
## GREEN WALL

The most complete system of flush-mounting containers for applications in all types of lightweight and plasterboard walls, characterised by special halogen-free technopolymers and GWT 850°C. The range consists of enclosures and distribution boards, boxes for the domestic range, junction boxes (also for KNX and digital vision devices) and boxes for interlocked switched socket-outlets. The GREEN WALL range is distinguished by its reliability, robustness and ease of assembly.



## BIG BOX

Flush-mounting boxes for domestic ranges, available in 7 versions (from 3 to 18 gangs) and distinguished by their high mechanical crush resistance and offering the best internal space on the market (+20%). The 3, 4 and 6 gang boxes can also be combined with special, reusable mortar-guard and paint-guard shields in technopolymer.



## 44

The junction and connection terminal blocks are applied to boards, enclosures and boxes. The range has 9 product types, including unipolar equipotential combined terminal blocks of the 44 ME (4- 6- and 8-way) range.



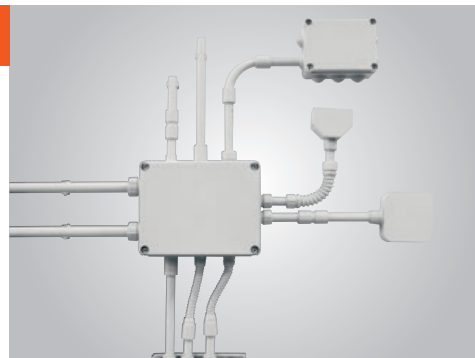
## RK

The system of rigid protective conduits, made of extremely high quality material, guarantees excellent quality and performance. Available with diameters from 16 to 63mm, in versions RK15 (medium), RKB (heavy) and RKHF (heavy in halogen-free material), they are fully integrable with the systems of flexible conduits and junction boxes.



## RK

A wide range of coupling devices (with IP40 and IP67 degrees of protection) for creating complex exposed systems. The RKHF conduits allow you to create entirely halogen-free systems.



## 50/52

GEWISS has a complete system of accessories and complementary items for electrical installation. This wide range makes GEWISS the specialist and ideal partner when implementing any type of system, from residential to the commercial and industrial sector.

# Pliable conduits

## FK

Available in seven different diameters (16 - 63mm), in PVC and polypropylene versions, with and without a cable puller. The two versions are complementary and satisfy all installation requirements, from simple chased systems to cellular concrete and vibrated reinforced concrete.



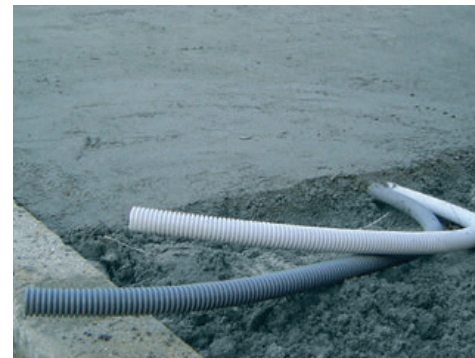
## FK 15

The FK15 medium pliable conduits (classification 3321) are available in 6 colours to identify the various lines. A good solution for the current electrical systems, especially modern domotic systems.

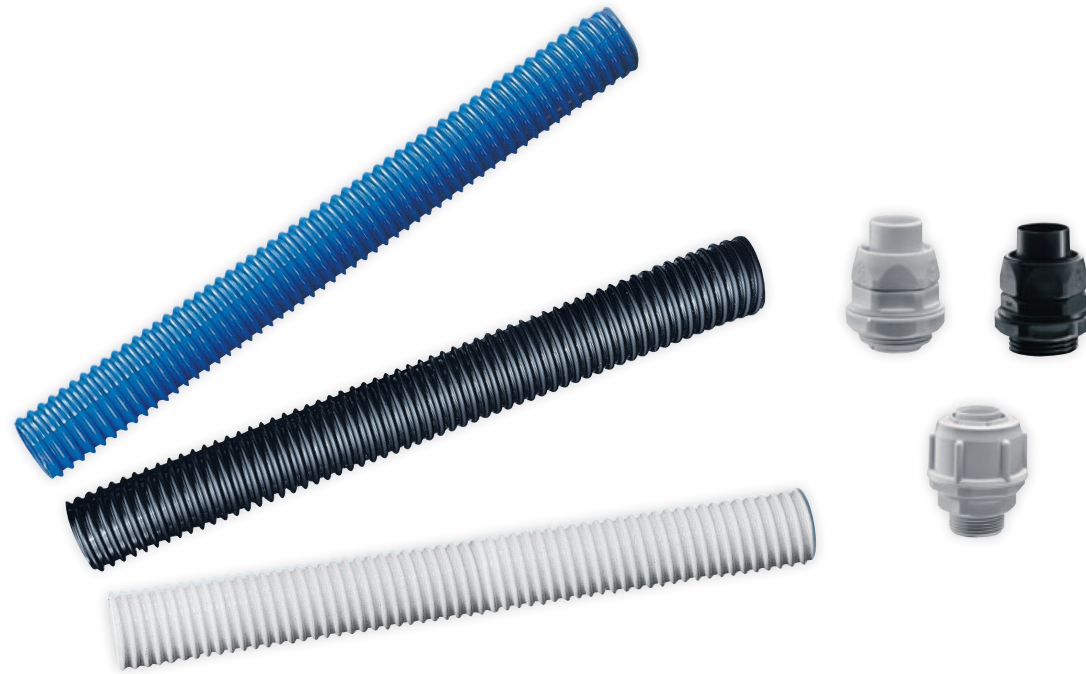


## ICTA

The ICTA self-recovering medium pliable conduits (classification 3422) are made of halogen-free material in 4 different colours. The ICTA is the ideal solution for use in reinforced concrete and self-levelling liquid concrete.







## DF

Thanks to their excellent flexibility and resistance to oils, the sheaths of the DF range (in 14 diameters, from 8 to 60mm, and three colours), and the choice of coupling devices for connecting boards, junction boxes and rigid conduits, make up a system that's ideal for creating exposed systems.



## FU AND PZ CABLE DUCTS

The conformation of the FU cable ducts, in 9 diameters from 40 to 200mm with built-in cable puller and joint supplied, allows the creation of very tight curvature radii and the laying in holes that are not perfectly straight. The new grey colour offers greater resistance to UV rays.



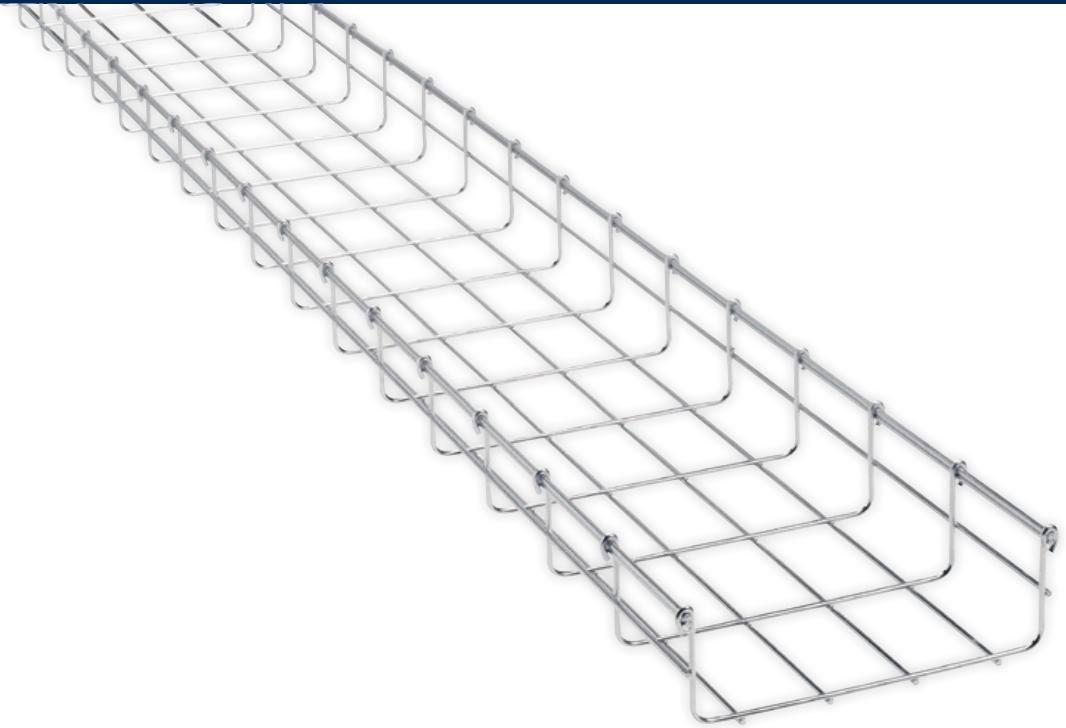
## FU AND PZ ELECTRICAL BOXES

Available in 5 sizes, they are ideal for junctions, as cross-pieces in electrical systems, or for telecommunications. They have knockouts and knockout bases for overlapping. The 200 and 300mm versions are available with a smooth back-mounting box.

# Wire cable trays

## BFR

A system of wire cable trays offering the possibility to have all the route components in straight lines, with special clip brackets and an automatic joint for faster, easier installation. Automatic Speedy Curva allows the cable tray to be cut more quickly, and flat curves to be created without cuts and joints, resulting in a better design and improved mechanical resistance.



## BFR

Available with heights of 30, 60 and 110mm, and in 8 widths (from 50 to 600mm), with a galvanised steel, electro-galvanised, stainless steel, or High Protection finish. The variety of sizes and surface treatments satisfies all possible needs in terms of capacity and environmental conditions.



## BFR

The double wire on the side ensures higher mechanical resistance to loads, and easy cutting. Transversal bending of the mesh offers maximum safety for cables and operator alike during installation.



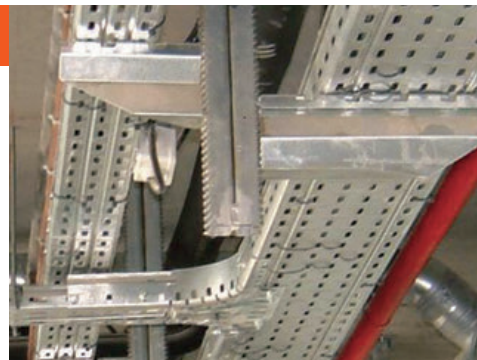
## BRN

A system of perforated cable trays in galvanised steel. Ideal for applications in the commercial and industrial sectors, it is characterised by the rib on the base to provide greater resistance to loads, and the rounded upper edge to ensure the safety of both the cables and the operators. Assembly is quick and easy.



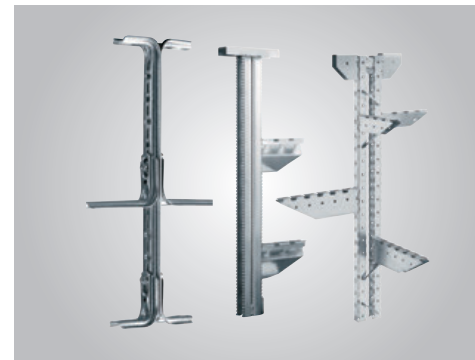
## BRN

The BRN cable tray is available in 4 heights (35, 50, 65 and 80mm) and 12 widths (from 95 to 605mm). A range of 33 sizes to meet the needs of every type of installation, from small systems to heavy industry.



## SP

The SP range contains three types of support: for light, medium and heavy loads. They enable all the GEWISS cable trays to be fixed on both surfaces and ceilings. The range is completed by wall brackets for light and heavy loads.





## LIGHTING

The lighting solutions combine energy savings and visual comfort by offering products ideal for uses ranging from industry to street applications, from indoor and outdoor decoration to emergency lighting.

**GEWISS**

# LED floodlights

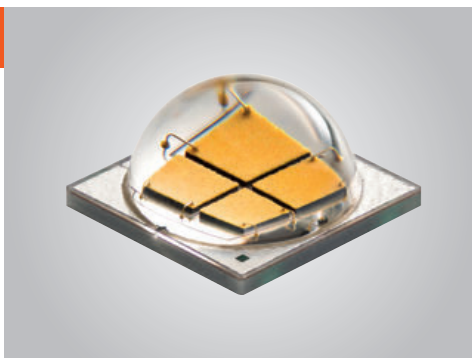
## SMART [4] FL

Smart [4] - LB is an innovative LED floodlight designed for use in a wide range of architectural and urban applications: including the lighting of showrooms, façades and advertising boards. Available in versions with 2, 2+2, and 5 LEDs, or 5+5 and 4x5 LEDs and with five types of optics: spot 10°, medium 60°, restricted 30°, elliptical, asymmetrical and diffused 100°.



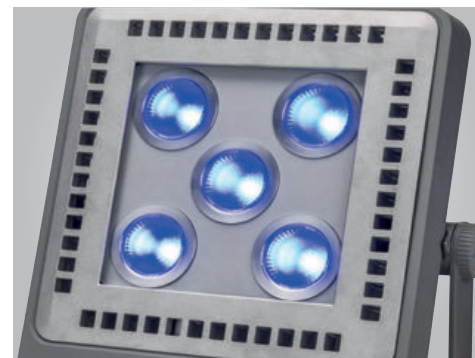
## SMART [4] FL

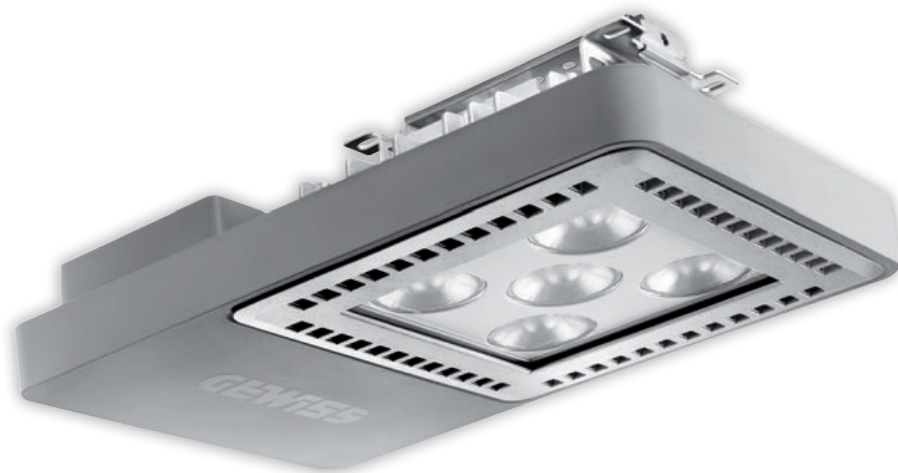
The Smart [4] devices are equipped with Power LEDs. The types selected, which are available with colour temperature 4000K, provide high levels of light efficiency, low flow decay, long duration and excellent colour performance.



## SMART [4] FL

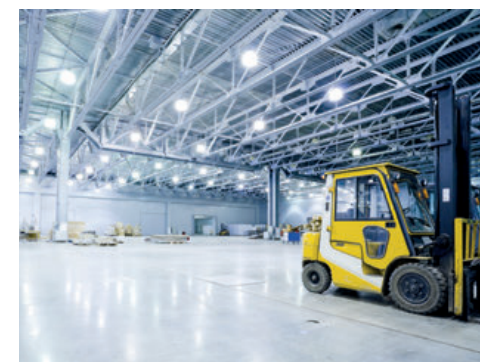
The new RGBW versions create different lighting scenes for architectural and decorative lighting.





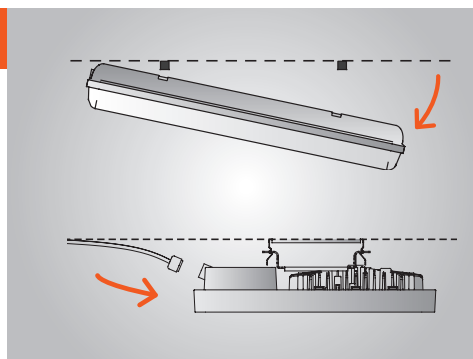
## SMART [4] LB

Smart [4] LB is a new LED device concept used to create linear and modular lighting systems based on the customer's needs, replacing traditional watertight luminaires in contexts such as warehouses, industry, workshops and underground car parks, with relatively low installation heights.



## SMART [4] LB

The entire range of SMART [4] products was designed and developed to make it very easy to install and retrofit on existing devices in obsolete systems.



## SMART [4] LB

Smart [4] is designed to optimise the efficiency of production systems, particularly the phases focusing on the end user: distribution, usage and scrapping. The result is a product with higher efficiency levels for the same performance, and internationally certified.



# LED high bays

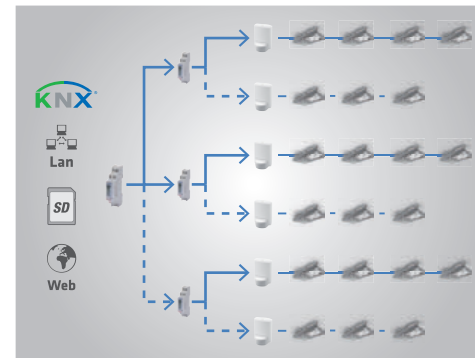
## SMART [4] HB

A new LED device concept used to create linear and modular lighting systems based on the customer's needs, replacing industrial high bays in contexts such as warehouses, industry, workshops and underground car parks, with relatively high installation heights.



## SMART [4] HB

Smart [4] is supplied with a specific device with a Gore-Tex® membrane, designed to prevent condensation and keep the electronic components inside in good condition.



## SMART [4] HB

Smart [4] is now available in an RF version, as well as DALI and DALI READY. This means it can be managed via a smartphone, tablet or supervision panel, thanks to Bluetooth technology.



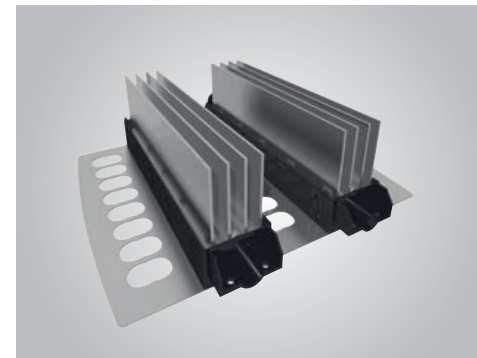
## STREET [O<sub>3</sub>] MAXI

The Street range is completed with the innovative Street Maxi [O<sub>3</sub>] street lighting, able to satisfy the lighting requirements for main, extra urban and high-speed roads; specifically designed for use in the hottest areas of the world: in fact they are able to resist high temperatures.



## STREET [O<sub>3</sub>]

White light street lighting for lighting public or private streets. The same body houses multiple high performance LED modules or innovative CosmoPolis compact discharge lamps. Street [O<sub>3</sub>] is distinguished by the [O<sub>3</sub>] Optical Output Optimizer technology, which makes it a versatile and functional device.



## STREET [O<sub>3</sub>] RANGE

The Street [O<sub>3</sub>] range is extended with the introduction of two new types of top performance street optics. All the LED optics consist of multiple modules, each with 16 LEDs, for a configuration from 1 to 5 motors. This satisfies different road lighting needs, keeping the same body and just increasing the modules.

# LED urban lighting

## URBAN [O<sub>3</sub>]

The urban lighting system consists of a luminaire body and a range of fixing accessories. Created to house LED light sources or discharge lamps such as CosmoPolis, Urban [O<sub>3</sub>] it satisfies the different lighting requirements for urban lighting in public areas. The numerous installation configurations and the range of multiple lenses that make up the optic guarantee efficient and comfortable lighting. New versions are now available with circular and pedestrian optics for the suspension lighting of the centre of the road and the bike lane.



## URBAN [O<sub>3</sub>]

All the LED lighting products of the Gewiss range offer the possibility of an additional warranty for a further 3 years after the standard 2-year warranty period, by registering on [www.gewiss.com](http://www.gewiss.com).



## SATURNO AND DEDALO

Die-cast aluminium floodlights with an innovative design. Especially suitable for environments of high architectural merit. The numerous optics available, and the various light sources, meet every need whilst also ensuring excellent energy savings.





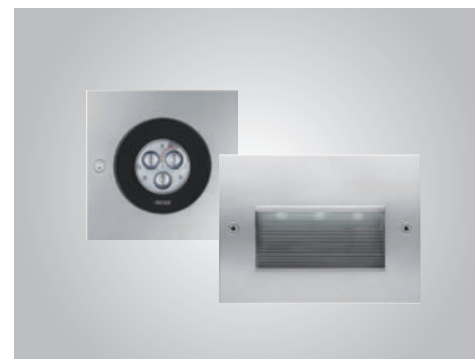
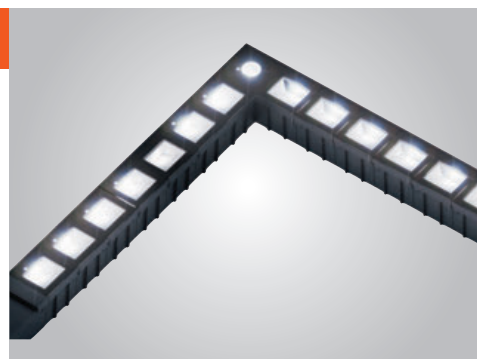
## BILIGHT AND TRILIGHT

Lighting devices for residential and urban lighting applications, with a rectangular or triangular section. The range makes full use of LED technology to create two levels of light intensity - a main one and a secondary one for signalling. BILIGHT and TRILIGHT are especially suitable for lighting walkways and paths, and for marking off defined areas.



## METROLIGHT

The lighting system with wall-washer optic is made up of patented modules that distribute the light in a continuous manner over various routes. The use of the innovative 230V LED source (without the need for power supplies) means there are no longer limits in terms of length and form, or for the number of sources that can be powered.



## LUXOR AND LUXOR WALL

Devices for floor or wall flush-mounting in die-cast aluminium with the latest generation LED sources: ideal for combining lighting and mechanical performance as well as for installation in environments with great attention to design.

# LED indoor residential / commercial sector lighting

## ASTRID ROUND / SQUARE / 60X60 / 30X120

A range of professional flush-mounting LED downlighters designed to provide a flexible solution to the lighting requirements for the retail, hotel and commercial sectors in general. A simple, linear design in four different shapes - ASTRID ROUND, SQUARE, 60X60 and 30x120.



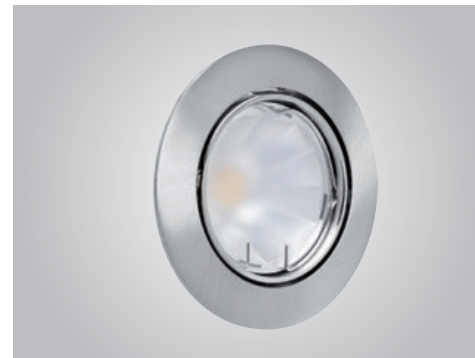
## ASTRID 30X120

The use of LED devices in the commercial sector not only guarantees notable energy savings, but also means far fewer maintenance interventions, the possibility to manage the light, and environmental sustainability - aspects that in turn mean economic advantages for the companies involved.



## ASTRID 75 LED

ASTRID 75 is the best alternative to conventional dichroic lamps. Flush-mounting devices in die-cast aluminium painted with a white, aluminium, gold or bronze colour, with tilting optic and combined with 12W LED sources.







## MERCURIO

A range of die-cast aluminium floodlights of low and medium power (70 - 400W), available in two sizes. Its compact, technical design means it can be used for both floodlighting purposes and in the urban context. Great attention to detail, shown by the perfect integration of the handle and hinge with the body of the product.



## HORUS

A range of floodlights for indoors and outdoors, made of reinforced, mass-coloured polyamide. The thermoplastic body reduces the overall weight, making installation easier. The HORUS range lets you choose from a wide variety of lamp types.



## GENIUS

The Genius range: the strength of versatility and robustness. Multifunctional floodlights for fixed and portable applications, in die-cast aluminium for halogen lamps. Protection against corrosion ensured by the polyester powder painting for outdoors with graphite grey or white finish.

# Traditional medium and high power floodlights

## STADIUM

Outdoor floodlights for lighting very large areas. Lamps with a maximum power of 2000W, combined with symmetrical or asymmetrical, diffused or restricted optics. The versions with asymmetrical optic guarantee excellent light emission, that can illuminate even at large distances while fully respecting the regional laws regarding light pollution.



## TITANO

High quality and high performance floodlights for power levels from 150 - 1000W. Suitable for lighting outdoor areas of an average size, with a high level of uniformity.



## COLOSSEUM

Range of die-cast aluminium floodlights for discharge lamps with a maximum power of 2000W. A product line enriched with a vast range of optics: symmetrical, asymmetrical and circular, with diffused and restricted beams.





## AVENUE 1,2 AND 3

Street lighting with simplified maintenance, designed to meet current regulations on this matter. Available in die-cast aluminium or technopolymer. The AVENUE range and the wide selection of light sources will satisfy the needs of every user, guaranteeing notable energy savings plus a reduction in management and maintenance costs.



## INDY

Family of street lighting devices with high lighting performance using cut-off and semi cut-off optics, suitable for use in urban and extra-urban streets, access drives and car parks.



## CITY

Low power street lighting for secondary streets, car parks and the outer perimeters of industrial buildings. All the street lighting devices have double insulation as to ensure greater electrical protection.



# Traditional industrial - High bays

## HALLE AND MINI-HALLE

Watertight die-cast aluminium high bays, available in two different sizes and colours (graphite grey and aluminium) for the electrical component compartment, and with 5 optics in aluminium or Plexiglass with high module. A perfect blend of design and lighting performance, HALLE and MINI-HALLE are ideal for installation in both the industrial and commercial sectors and are now available in versions with CPO-TW and CDM-T Elite lamps or LEDs included in the devices.



## KONO

Watertight industrial high bay with various lamp focus adjustment possibilities (8 different positions). New closure system for the wiring compartment, using a reinforced technopolymer clip.



## HERCULES

Industrial suspension high bay in pressed, painted steel, available with two different colours (graphite grey and grey RAL 7035) for the wiring compartment, and with 3 types of optic (smooth, scored and transparent).







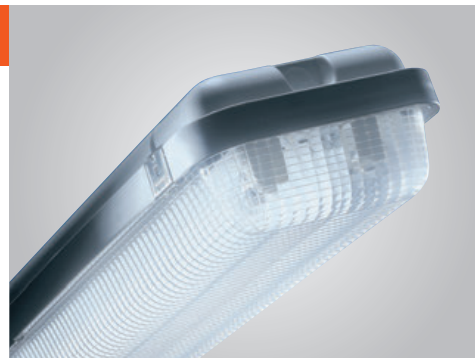
## CLICK 21

Watertight luminaires with high quality polycarbonate body and transparent polycarbonate diffuser stabilised for U.V. rays. With technopolymer clips that require no tools, making installation and maintenance operations quicker and easier. The range includes versions with fluorescent linear T8 and T5 lamps with an electronic power supply. Emergency versions are also available for fluorescent T8 linear lamps.



## ZNT

Watertight luminaires in high quality polycarbonate. The robustness and quality of the materials, combined with the various fixing possibilities, make this product ideal for installation in the industrial and commercial sectors, or in sports facilities.



## ZNT

The ZNT range is completed with electronic versions for compact fluorescent lamps of 55W and 80W, allowing the luminaires to even be installed at a height of more than 5m thanks to the use of special restricted beam high bays.



# Traditional urban lighting

## SATURNO AND DEDALO

Die-cast aluminium floodlights with an innovative design. Especially suitable for environments of high architectural merit. The numerous optics available, and the various light sources, meet every need whilst also ensuring excellent energy savings.



## POINT

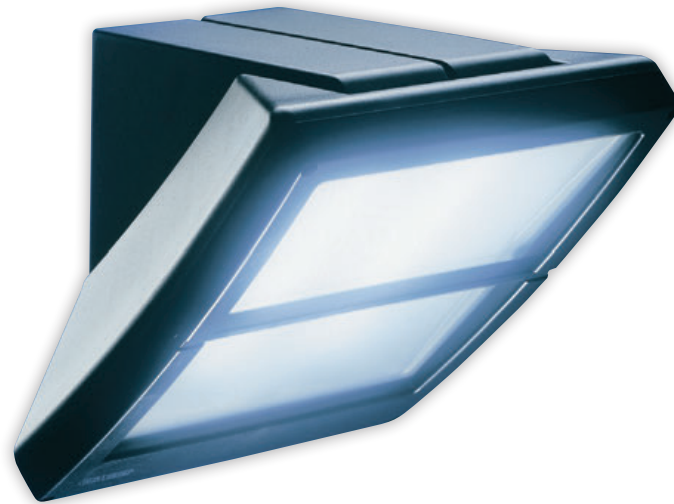
The lighting devices with shielded optic for outdoor residential areas are available with compact fluorescent lamps and low loss magnetic power supplies. The design of POINT blends perfectly with any installation context.



## GLOB

Devices for lighting green public and residential areas, designed to be arranged as desired according to the requirements.





## EXTRO

The multifunctional devices for lighting residential and urban areas can be installed on walls, corners, round poles, or special columns with a watertight plate. Now also available in new LED versions with a presence sensor.



## LUXOR

Devices for floor flush-mounting in die-cast aluminium, ideal for combining lighting and mechanical performance. Also available with closure ring or flange in stainless steel.



## LUXOR WALL

Devices for surface flush-mounting in die-cast aluminium for fluorescent, LED and discharge sources with symmetrical or asymmetrical optic. The flange maintains the family feeling with the CHORUS range, offering design coherency throughout the rooms.

# Traditional outdoor devices

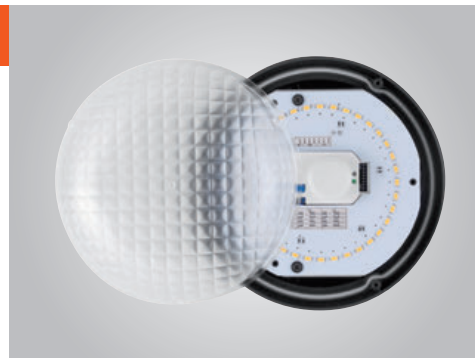
## BOLLA

Round watertight luminaires made with high quality thermoplastic material. Alongside the traditional versions there are the new LED versions in a Stand Alone configuration or with a presence sensor, which helps with energy savings.



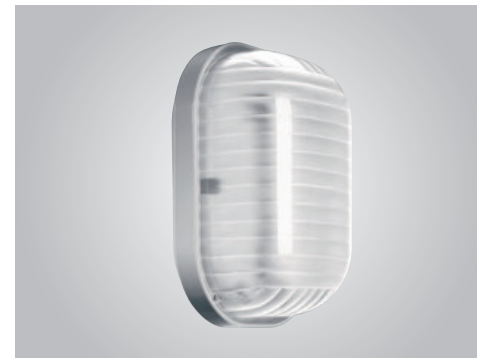
## LED VERSIONS

The BOLLA luminaire is now available in 1000lm and 2000lm LED versions too, in Stand-Alone configuration or with a presence detection sensor



## GUSCIO

Oval watertight luminaires made with high quality thermoplastic material and therefore high mechanical resistance. Each model in the TONDA range offers two power supply inputs: in the bottom or side of the product.



## ASTRID 75 AND ASTRID 210

Professional system of flush-mounting downlighters with compact fluorescent sources. ASTRID 210 uses only high quality materials and is also available in the IP44 version for better glare control. ASTRID 75 is the best alternative to conventional dichroic lamps. Flush-mounting devices in die-cast aluminium painted with a white, aluminium, gold or bronze colour, with tilting optic and combined with 7W and 13W energy saving lamps.



## DOMUS

Devices for walls and rails, providing indirect light with halogen lamps; clean, simple design, conceived to obtain the maximum light with an elegant style but the minimum visual impact.



## MANTA AND IRIDE

The MANTA devices, available in three sizes, are easily inserted in every type of environment and furnishings. The diffuser in opal Plexiglas with satin finish gives the product a higher design quality and produces a softer light. Also available in new LED versions.





# Emergency - Centralised management

## STARTEC EIB

Emergency devices for centralised management that can be integrated in building automation systems. The luminaires communicate via BUS, following the KNX standard communication protocol. The dual microprocessor electronics manage all operation statuses, and the execution of the operational and battery tests.



## STARTEC NET

Autonomous emergency luminaires for centralised management via BUS LonTalk. Thanks to the unequivocal identification code that is automatically transmitted, the luminaires are recognised and autonomously registered by the control unit.



## UPS

The UPS rescue units can be integrated with the STARTEC NET and STARTEC EIB ranges, using the special lamp sensors. Available in 1 - 3 kW versions, single phase/single phase with ONLINE technology with dual version V.F.I.





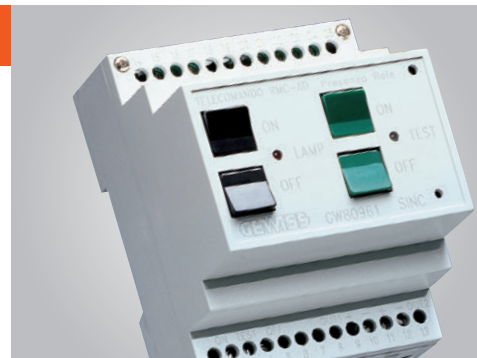
## STARTEC BASIC

Conventional autonomous emergency luminaires with symmetrical optics. The range includes fluorescent luminaires in the wall/ceiling, flush-mounting, double-sided and watertight IP65 versions; there are also emergency signalling luminaires that use LED technology. Body and diffuser made entirely of thermoplastic with a self-extinguishing level of 850°C.



## STARTEC CHECK

Autonomous emergency luminaires with local self-diagnosis. STARTEC CHECK performs regular lamp and battery operation tests; the signalling LED indicates the outcome of the test and the operation status of the lamp.



## TRANSFORMATION KITS

Devices used to convert fluorescent devices into emergency devices, for centralised or simple supervision systems.



[www.gewiss.com](http://www.gewiss.com)

The GEWISS consumer website aims to spread the domotics culture, offering the end user the chance to request information about the most suitable solutions for his own home and needs.



Catalogue

A choice, updated selection for the general public. Easy to consult via product searches or by viewing the online catalogue that is divided into five product families, or with the innovative search by topic/functional area, which is very useful for your customers.



Section for professionals

For professionals there will soon be an entire area, completely renewed in terms of content and style. Another tool offered by the company to aid your business, with specific services and contents.



Spazio CHORUS

Spazio Chorus is the place where you can try out the GEWISS domotic solutions, discovering contexts that adapt to every style and meet every need. A real domotic home in Fieramilano (RHO).



G View

GVIEW is a container of reflections, notes and studies. It hosts journalists, designers, bloggers and architects who want to express an original point of view on the subjects of GREEN, TECH and STYLE.

## www.gewissprofessional.com

The site promotes a new system culture with an offer of training courses, technical manuals and teaching kits dedicated to all those professionals who want to keep abreast of technological innovation. You can find KNX certification courses, useful content and activities dedicated to schools.



## Social networks

GEWISS opens up to the social media world via Facebook, YouTube, Twitter and Google+. A new opportunity to communicate with customers. A new area for exchanging ideas, news, images and filmclips. But it's also a place where you can request assistance thanks to a direct channel of communication with the company.





## A complete software suite for the design, cost estimates and certification of the GEWISS range.

Software



Software for the control and management of Gewiss programs. It shows all the characteristics of the various software packages by means of descriptions, pictures and video courses, making the choice easier.



Program for the automatic update of Gewiss software packages.



Software for drawing up the documentation relating to the Declaration of Conformity for the high standard of the system (Ministerial Decree 37/08 - CEI 0-3). It contains all the references to the main quality marks for Gewiss products.



Software for defining the "performance level" of the electrical system in residential environments according to the new edition of CEI Standard 64-8.



Software for the creation of bid specifications for electrical systems related to various application environments that may be selected by the user.



Software for the cost estimate of a complete electrical system. It may be used as a stand-alone, or by importing data processed by other Gewiss PROGRAMS.



Software for the design and cost estimate of electrical systems. The program is interconnected with other Gewiss software: it is used to manage graphical elements (symbols, images, drawings, etc.) of the components included in the projects processed by other Gewiss programs.



Quick design and estimation software for video entryphone systems. A simple wizard guides users in selecting the main system parameters.



Software for the design, sizing and budgeting of LV systems and boards. It also allows you to obtain the design of the front panel, and carry out a thermal check.



Software for the certification and cost estimate of boards for construction sites, wharfs and campsites, and distribution boards, with the possibility to automatically draw up the necessary technical documentation.



Software for the cost estimate and design of BUS systems, with the possibility to define the plan and the correct addressing/connection of the BUS devices.



Software for the cost estimate and design of video entryphone systems, with the possibility to define the plan and connection layout of the devices.



Software for managing the DXF drawings representing the Gewiss products, and for inserting them in AutoCad or GWCAD.



Software for the lighting design of indoor and outdoor environments, and the creation of the documentation to be supplied to the client as a project selection aid.



Software for the economic evaluation of the street lighting systems implemented with the GEWISS range dedicated to street lighting Avenue 1, 2 and 3, for street categories from ME1 to ME6 according to the requirements defined by standard UNI EN 13201-2.

Web Software



Software for selecting the ReStart self-reclosing devices.



Estimates for DOMO CENTER flush-mounting system columns for distribution, domotics and data



Estimates and thermal checks for enclosures (CEI 23-51)



Choice of the best Smart [4] for your own system, and payback calculation



The new kits and display stands are a useful tool for showing customers the products they can choose when creating their system. A handy aid for the work and business of all top electro-technical professionals.







Created from the technological evolution of GEWISS, the GEWISS Professional skills centre spreads an electro-technical culture to the main professionals in the sector such as installers, designers and teachers.

**Gewiss Professional provides:**



## Training for installers and designers

A wide range of courses for learning more about the main topics in the electrical sector, with particular focus on the most innovative technologies such as domotics. The Gewiss Professional training centre is certified on an international level and is able to issue the qualification of KNX Partner.



## Teaching kits

Teaching courses, manuals and equipment for technical schools and university teachers. The tools that GEWISS Professional offers the schools adapt innovative methods and make it possible for the teacher to find a complete and effective solution for integrating his own teaching programs.



Further information:

- visit [www.gewissprofessional.com](http://www.gewissprofessional.com)
- send an e-mail to [info@gewissprofessional.com](mailto:info@gewissprofessional.com)
- call **035 946 111** and ask to speak with one of our trainers



### Technical manuals

For all those electro-technical professionals who want to keep abreast of technological innovations, GEWISS has an extensive range of technical and illustrated manuals. Produced in collaboration with Editoriale Delfino and Tecniche Nuove, these handbooks provide theoretical, technical and Standards information to facilitate an understanding of the principles.



### Tools for training courses

GEWISS Professional, the skills centre that aims to promote and spread an advanced system culture, produces demonstration kits for simulating advanced system configurations and carrying out practical tests.



In recent years, GEWISS has dramatically increased its investments in training activities, by increasingly broadening the selection of activities dedicated to professionals of the electronics sector, contributing towards the distribution and use of software tools that support the sizing, certification and cost estimation of plant engineering products and solutions.

Through these activities, GEWISS implements the objective of its "mission", in other words the desire to bring INNOVATION to the market.

Training is strategic to the whole sector, as the electrical world is evolving and the professionals concerned will increasingly have to possess adequate knowledge of the most modern system technologies.

Today it is indispensable to possess cross-sector skills which foster the interaction between the electrical system and all the systems found in a building, by taking advantage of the automation and communication potentials offered by modern technologies.

#### Copyright

In compliance with copyright laws, the Italian Civil Code and further directives in effect in the markets where GEWISS operates, all information, data, images, photographs, drawings, tables and anything else included in the promotional and descriptive GEWISS material is the exclusive and sole property of GEWISS which holds all moral, commercial and economical rights to its use. Therefore, any reproduction of said material, using any means and whether total or partial is strictly prohibited without prior written authorisation from GEWISS. Any violation of the above will be prosecuted in compliance with law. The indications, measurements, drawings and photographs of the products and components are shown by way of information only and are not binding since they may be modified without any notification, save for errors or omissions.



GEWISS S.p.A. Registered office: Via A. Volta, 1 - 24069 CENATE SOTTO (Bergamo) - Italy  
Tel. +39 035 946 111 - Fax +39 035 945 222 - [gewiss@gewiss.com](mailto:gewiss@gewiss.com) - [www.gewiss.com](http://www.gewiss.com)

Sole Shareholder company - Bergamo Register of Companies/ VAT / Tax code (IT) 00385040167 - REA 107496 - Share Capital 60,000,000.00 EUR fully paid up