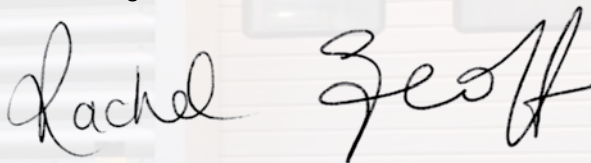


GAP Lighting is now one of the UK's leading manufacturers of LED. As specialists in the application of LED lighting for interior and exterior installations, we are using the latest technology to develop professional low energy lighting solutions.

Our products are carefully designed to be contemporary in style, yet versatile, easy to install, maintenance free and long lasting.


Our priority as a company is to satisfy the needs of our customers and end users of our products. We provide custom designed lighting schemes, but we also give the technical support and aftercare that is sometimes needed.

After many years in the industry we remain a family business, growing from strength to strength.

Handwritten signatures of Rachel and Geoff Pring in black ink.

Rachel and Geoff Pring  
Directors

STRIPLIGHTS .....	05
LED KITS.....	11
GROUND LIGHTS.....	15
PONDLIGHTS .....	23
WALL LIGHTS .....	26
LED EMERGENCY .....	36
FLOODLIGHTS .....	38
WALLWASHERS .....	40
LED HIGHBAY.....	41
SPIKE LIGHTS .....	42
SPOT LIGHTS.....	48
BATHROOM .....	50
DOWNLIGHTS .....	56
LED MODULES.....	59
LAMPS .....	60
TRANSFORMERS .....	72
DRIVERS.....	73
WORKLIGHTS .....	76
TORCHES.....	78
ACCESSORIES.....	79



GAP RGB striplight  
Gatwick Airport

## Indoor striplight



Our LED strip lighting is flexible, resistant, durable and safe to the touch.

It is ideal for installation in difficult to reach places, long lasting and maintenance free. Our products have been successfully installed in prestigious homes, restaurants, hotels, spas and shops, including Bluewater and the 'Hotel Chocolat' chain in the UK and Europe.

**We offer a bespoke service for any project at no extra cost.**

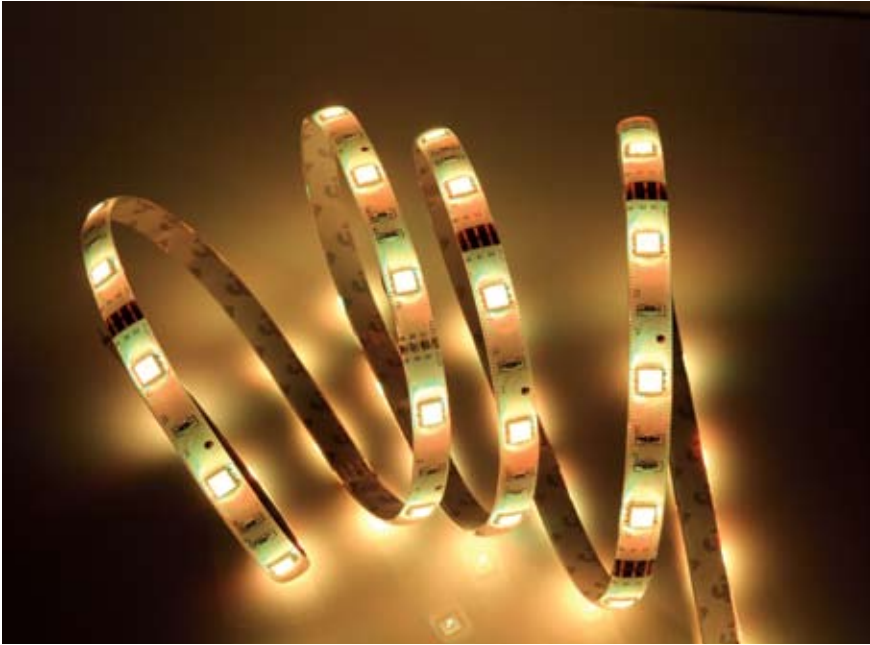
Simply give us the measurements, and we will do the rest.

We supply 12v, 24v and 240v striplight, which is available in various degrees of power.

Please specify the type of striplight and colour required and ensure that you select the correct size driver.

GAP LED striplight Bluewater

## LED-5M-IP65



Our IP65 waterproof striplight is suitable for all outdoor uses and is an ideal solution for bathroom lighting. Supplied on a 5m reel and can be cut every 3 LEDs.

Power consumption is 7.2w per metre. Ask any of our technical team for advice.

Available colours



## LED-IP65-EDGE



Our 10mm side emitting striplight has LEDs placed along its edge allowing side illumination. Power consumption is 4.8w per metre.

Please ensure that a suitable sized driver is used. 3M self adhesive backing tape for easy installation. Supplied on 5m reel or may be cut to the required size.

Available colours



## 5M-RGB



Amazing feature lighting can be created with RGB Colour Changing strip light. With our easy to operate remote control you can create amazing feature lighting. Choose from 7 different colours and 4 changing programs, which can be sped up or slowed down and dimmed. The power consumption for the 12v RGB LED strip is approx

7.2w per metre and a controller is required. The calculations for choosing an appropriate driver will be as follows:- up to 3.5 metres a 30w driver, 6 metres will need a 50w, and so on. For maximum runs, the same rules apply as the single coloured strip. Please contact our technical department for advice if required.

## LED-5M-IP68



Our IP68 striplight is housed with a sealed rubber enclosure, making it suitable for swimming pools, spas, ponds and water features. Suitable 12v DC driver required. RGB also available (additional controller required).

Unlimited lengths may be run using boosters.

Can be cut every 3 leds. Silicon glue is required to maintain the waterproof rating.

[We can give you help and advise with any design. Ask one of our technical team.](#)

Available colours





## LED-MAXI-WH-ROU



Easy to install 10 light kit  
10 x IP67 Chrome units  
6 x LEDs per unit  
15m of cable  
Power supply: Combined BS Plug  
Diameter: 45mm  
Depth: 30mm  
Cut-out: 32mm  
Available in blue and white

Code: LED-MAXI-WH-ROU  
LED-MAXI-BL-ROU

## Midi Kit



A high quality polished chrome finish gives this LED kit a contemporary look making it ideal for bathrooms, kitchens, staircases, ceilings and outdoor use.

Code: LED-MIDI-ROU

Available colours



The kit comprises of 10 x IP67 units, 5m of cable and an IP44 junction box.

Available in round and square, blue, white, warmwhite and RGB.

3 LEDs per unit

Diameter: 30mm

Depth: 27mm

Cut-out: 22mm

Code: LED-MIDI-SQ

## Mini Kit



Easy to install 10 light kit  
 10 x IP67 Chrome units  
 1 x LED per unit  
 15m of cable  
 Power supply: Combined BS  
 Plug  
 Diameter: 15mm  
 Depth: 22mm  
 Cut-out: 12mm  
 Available in blue and white  
 Code: LED-MINI

## GL010



Stainless Steel IP65 driveover light.  
 Ideal for many outdoor locations  
 such as driveways, paths and  
 decking.  
 Includes GU10 and LV lampholders.  
 In and out cable glands.  
 Suitable for longer bodied lamps.  
 Diameter: 100mm  
 Length: 130mm (170mm with sleeve)  
 Cut-out: 95mm

Code: GL010-Round  
 GL010-Square

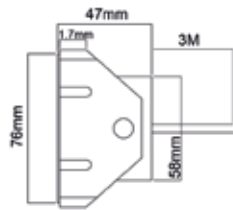




## GL140

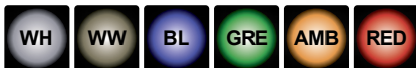


The GL140 is the ideal LED groundlight with 3 x 1W high powered LEDs. Impressive light output and easy installation.



LED Brand	CREE
Ta	60°C
Material	Stainless steel
Input	RGB350mA
IP Rating	IP68
Approvals	CE ROHS
Power	3W
Viewing angle	45°
Wiring	Series
Cut-out	50mm

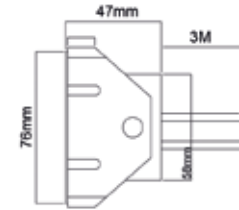
Available colours



## GL140-RGB

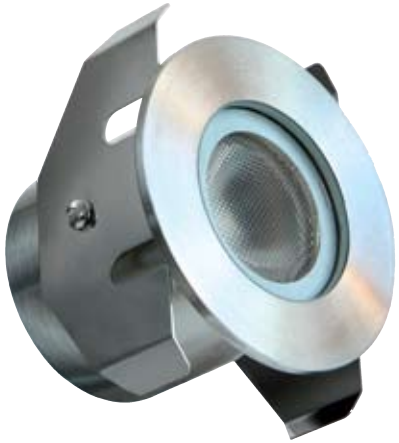


The GL140RGB is a fantastic option with 3 x 1W high powered colour changing LED. Easy installation, and ideal for many applications.

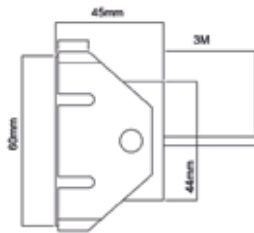


LED Brand	CREE
Ta	40°C
Material	Stainless steel
Input	RGB350mA
IP Rating	IP68
Approvals	CE ROHS
Power	3W
Viewing angle	30°
Wiring	Series
Cut-out	65mm

## GL116



The GL116 is a popular choice for many applications. High quality stainless steel used to create a robust and long lasting fitting.

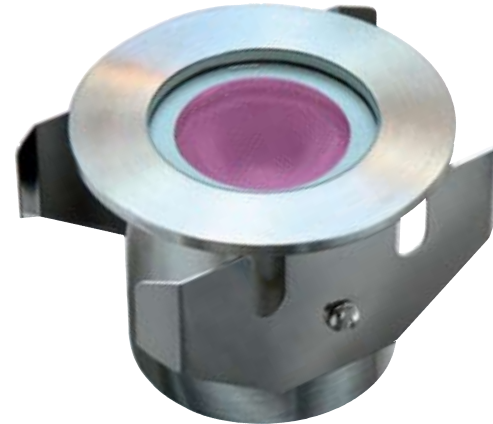


LED Brand	CREE
Ta	40°C
Material	Stainless steel
Input	350mA
IP Rating	IP167
Approvals	CE ROHS
Power	1W
Viewing angle	38°
Wiring	Series
Cut-out	50mm

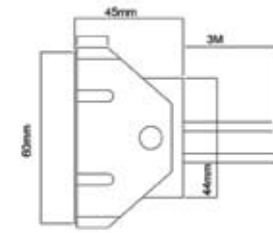
Available colours



## GL116-RGB



The GL116RGB has been developed using the highest quality Cree chip enabling it to produce the most stunning colour changing effect for any application.



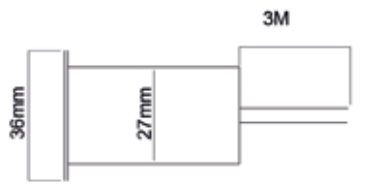
LED Brand	CREE
Ta	40°C
Material	Stainless steel
Input	RGB350mA
IP Rating	IP68
Approvals	CE ROHS
Power	3W
Viewing angle	45°
Wiring	Series
Cut-out	50mm

## GL118



An IP67 stainless steel fitting that is perfect for bathrooms or outside use. Its small size (36mm dia) makes it ideal for marking walkways and decking. This product is designed for long lasting and low power consumption.

Driver required  
Code: T-24VDC  
T-IP24VCD



LED Brand	Edison
Ta	40°C
Material	Stainless steel
Input	24v
IP Rating	IP167
Approvals	CE ROHS
Power	0.5W
Viewing angle	20/40°
Wiring	Parallel
Cut-out	27mm

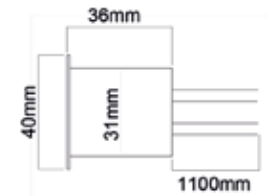
Available colours



## GL119

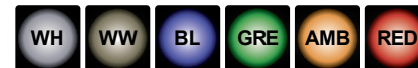


This 1W LED groundlight is small, yet powerful. High quality design to support a long lasting application. With toughened glass for safety.

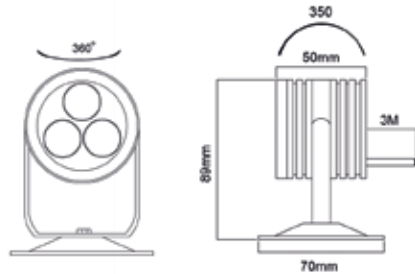


LED Brand	CREE
Ta	40°C
Material	Stainless steel
Input	350mA
IP Rating	IP68
Approvals	CE ROHS
Power	1W
Viewing angle	20°
Wiring	Series
Cut-out	32mm

Available colours



## GL023

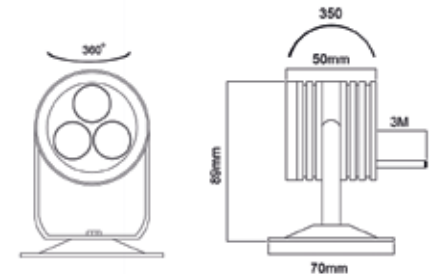


LED Brand	CREE
Ta	60°C
Material	Stainless steel
Input	350MA
IP Rating	IP68
Approvals	CE ROHS
Power	9W
Viewing angle	30°
Wiring	Series

Available colours



## GL023RGB



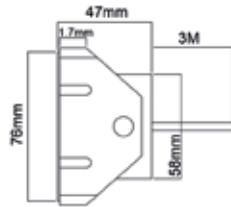
The GL023RGB has 3x3W LEDs giving a total of 9w of colour changing power. IP68 rated, stainless steel, and fully adjustable for use in and around pools, spas, ponds and water features.

LED Brand	Edison
Ta	40°C
Material	Stainless steel
Input	RGB350mA
IP Rating	IP68
Approvals	CE ROHS
Power	9W
Viewing	Angle
Wiring	Series

## GL150



The highest quality CREE chip has been used to create the brightest in LED power. IP68 protection allows the GL150 to be fully submersed.



LED Brand	CREE
Ta	60°C
Material	Stainless steel
Input	350MA
IP Rating	IP68
Approvals	CE ROHS
Power	3W
Viewing angle	40°
Wiring	Series
Cut-out	45mm

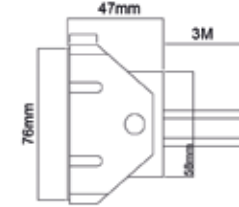
Available colours



## GL150-RGB



The GL150RGB gives 7W of high powered colour changing LED which will ensure an amazing effect whatever the application.

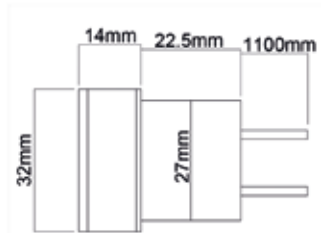


LED Brand	CREE
Ta	40°C
Material	Stainless steel
Input	RGB350mA
IP Rating	IP68
Approvals	CE ROHS
Power	7W
Viewing angle	40°
Wiring	Series
Cut-out	45mm

## ML-103

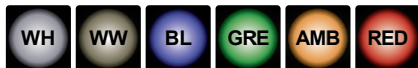


The ML103 creates an elegant halo effect in a choice of colours. High quality aluminium alloy face. A mini fitting but with great effect.



LED Brand	CREE
Ta	40°C
Material	Aluminium
Input	350mA
IP Rating	IP65
Approvals	CE ROHS
Power	1W
Viewing angle	20°
Wiring	Series
Cut-out	27mm

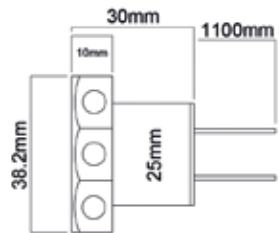
Available colours



## ML-104

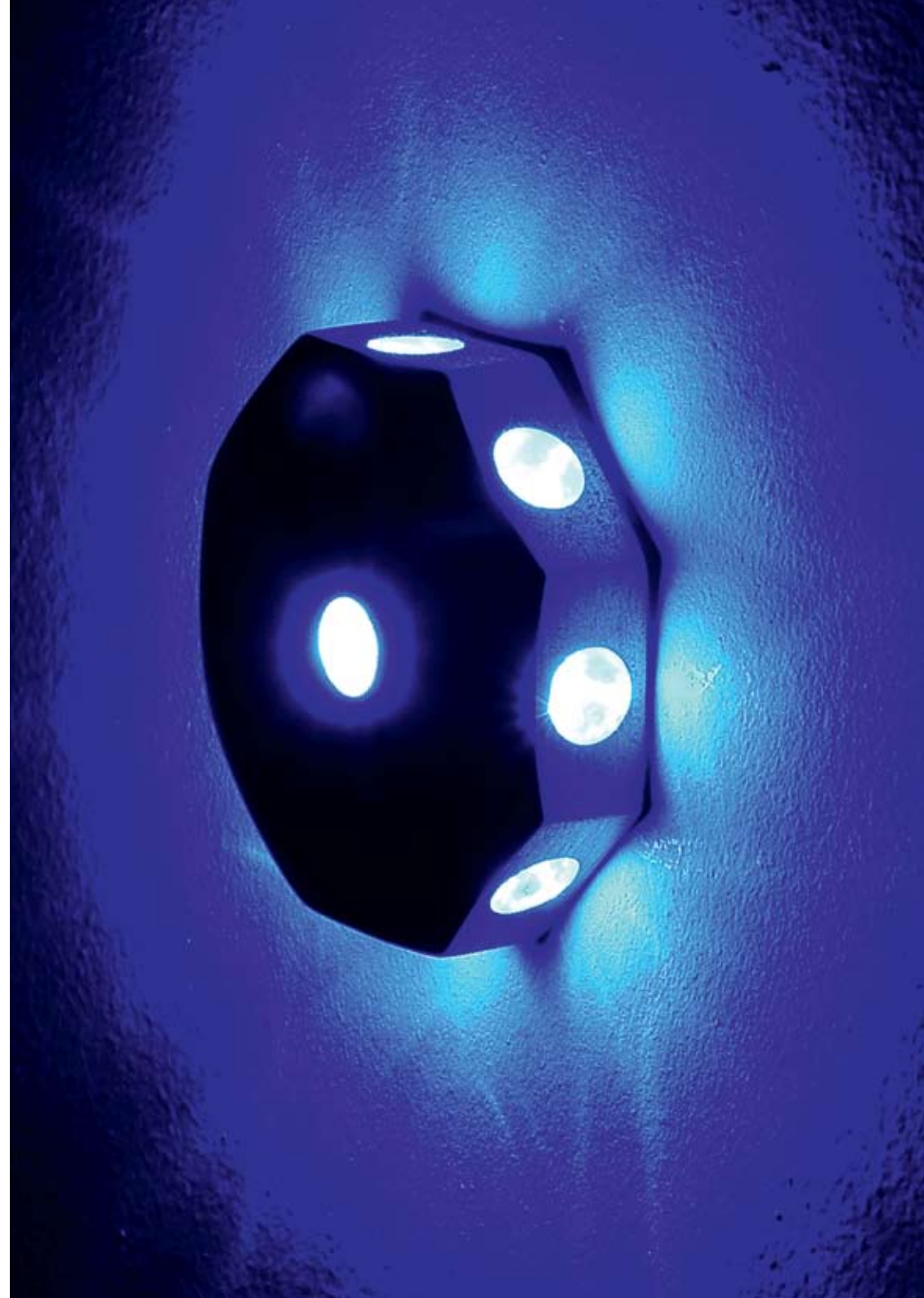
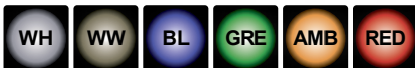


The ML104 is a decorative mini light with octagonal design. Driven by just one high powered LED, this long life unit will add style to any wall, floor and ceiling, indoors and outdoors.



LED Brand	CREE
Ta	60°C
Material	Stainless steel
Input	350mA
IP Rating	IP65
Approvals	CE ROHS
Power	1W
Viewing angle	30°
Wiring	Series
Cut-out	25mm

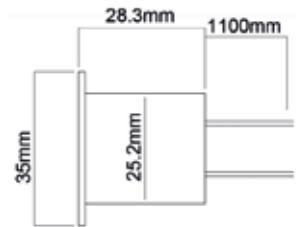
Available colours



## ML-101

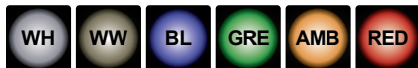


The ML101 is a charming decorative mini light with eye catching design. Stainless steel body, IP68 protection, and 1W high powered LED, makes this wall light a perfect choice for both inside and outside applications.



LED Brand	CREE
Ta	40°C
Material	Stainless steel
Input	350mA
IP Rating	IP68
Approvals	CE ROHS
Power	1W
Viewing angle	40°
Wiring	Series
Cut-out	25mm

Available colours



## ML-102-1



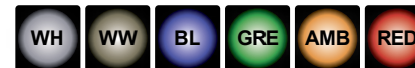
A stylish and functional mini wall light that is great for reading, lighting pictures and other focal items. Stainless steel and high powered LED. Available as a single or double unit. .

## ML-102-2



LED Brand	CREE
Ta	60°C
Material	Stainless steel
Input	350mA
IP Rating	IP65
Approvals	CE ROHS
Power	1W
Viewing angle	30°
Wiring	Series

Available colours





## GP-SS



Stainless steel up/down pillarlite

The Pillarlite range is an exclusive contemporary style with slender base and versatile design, enabling longer bodied lamps and easy lamp change.

Diameter: 60mm  
Height: 195mm  
Projection: 90mm

## GP-B



Stainless steel pillarlite with black matt powder coating.  
IP44 protection.

Our Pillarlite range comes complete with 50W GU10 halogen lamps. For a low energy option we would recommend GAP 6W LED luxeon lamps.

Also available in white  
Code: GP-W

GP-1SS



Single pillarlite for up or down use.  
Stainless steel.  
IP44 protection.

Diameter: 60mm  
Length: 140mm  
Projection: 90mm

Also available in white  
Code: GP-1W

GP-1B



Our Pillarlite range comes complete with  
50W GU10 halogen lamps. For a low  
energy option we would recommend  
GAP 6W LED luxeon lamps.

G3-SS



Single pillarlite with adjustable base  
Stainless steel.  
IP44 protection.

Diameter: 60mm  
Length: 180mm  
Projection: 178mm

G3-B



Stainless steel pillarlite with black  
matt powder coating.  
IP44 protection.

Diameter: 60mm  
Length: 180mm  
Projection: 178mm

### Self-contained LED Emergency exit sign



Case material: strong steel enclosure with white epoxy powder coating  
 Mode: maintained  
 Emergency duration: 3 Hrs  
 Light source: 14 white LEDs array (1 Watt)  
 Average lumen: 80 lumens  
 Mains voltage: 230V 50/60Hz  
 Mains current: 17mA  
 Battery: 4.8V 700MA Ni-cd  
 Recharge period: 16 Hrs

IP rating: IP20  
 Silk screen legend panel  
 Charge indicator: green LED  
 ROHS compliant, overcharge and over-discharge protection  
 D: 375mm x 185mm x 160mm  
 Code: EM3EX-LED

### Self-contained LED Emergency bulkhead



Mode: maintained  
 Emergency duration: 3 Hrs  
 Light source: 14 white LEDs array (1 Watt)  
 Average lumen: 80 lumens  
 Mains voltage: 230V 50/60Hz  
 Mains current: 17mA  
 Battery: 4.8V 700MA Ni-cd  
 Recharge period: 16 Hrs  
 Type: vandal resistant  
 Charge indicator: green LED

IP rating: IP65  
 Case material: diffuser PC V0, high optical performance, hinged gear tray-PC V0  
 ROHS compliant  
 Overcharge and over-discharge protection.  
 D: 340mm x 100mm x 75mm  
 Code: EM3-LED



LED: 1 x 10W COB  
Luminous Flux: 700Lm  
Beam Angle: 120  
Colour Temp: 6400k  
Housing: Anodised aluminium

Code: FL-LED10



LED: 1 x 30W COB  
Luminous Flux: 2100Lm  
Beam Angle: 120  
Colour Temp: 6400k  
Housing: Anodised aluminium

Code: FL-LED30



Code: FL-LEDRGB

## IP65 colour changing Wall Washers

LED Wall Washers are perfect for creating dynamic lighting both indoor and outdoor. Ideal for building outline, park lighting, and walls of hotels, bars, shops,



cinemas etc. Both our models have built in controllers with many colour changing programmes. They can be used independently or linked with other units.

36 x 1W LED  
 Input voltage: AC 100-240v  
 LED quantity: R12, G12, B12  
 Luminous flux: R480, G720, B190  
 Changing patterns:  
 11 kinds = DMX512

Code: WLW LED 36 RGB

18 x 1W LED  
 Input voltage: DC24v or AC100-240v  
 LED quantity: R6, G6, B6  
 Luminous flux: R240, G360, B100  
 Changing patterns:  
 11 kinds + DMX512

Code: WLW LED 18 RGB

DMX controller  
 Code: T-DMX512

Hundreds of lighting functions and thousands of colours can be achieved using our DMX Controller.



A powerful low energy option, ideal for illuminating large warehouse space.

LED: 1 x 100W COB  
 Luminous Flux: 10 000Lm  
 Colour Temp: 6000k  
 Beam Angle: 60  
 Material: Aluminium body and reflector  
 Code: Hb-100



Designed to take longer bodied GU10 lamps, such as our 7w luxeon and 5w RGB LED lamps. Versatile and easy accessible to change lamps.  
 IP44 Stainless steel.  
 1 x 50w GU10 lamp.  
 Extension spike also available to length of 300mm.  
 Complete with 3m of rubber flex.

Diameter: 60mm  
 Length: 165mm  
 Projection: 90mm

G2-SS



G2-B



## SL133

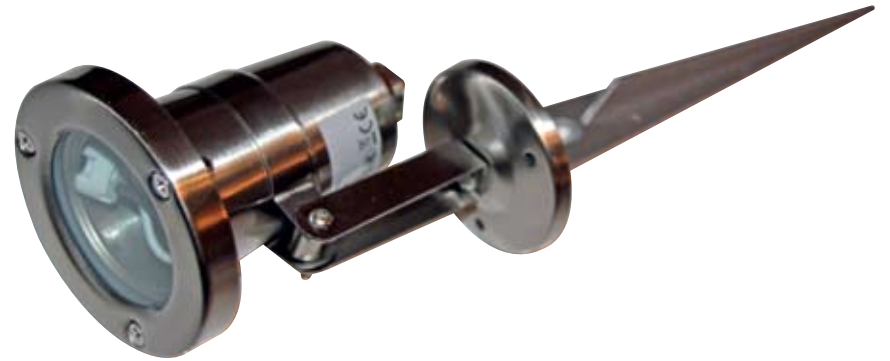


A robust LED spikelight suitable for any outdoor application.

LED: 3 x 1W CREE  
Luminous Flux: 300Lm  
Input Current: 350ma  
Material: Stainless Steel

Length: 465mm  
Diameter: 66mm  
Projection: 90mm  
Code: SL133

## GFS-LV



IP65 50W Low Voltage Spotlight  
Can be surface mounted or spiked.  
High quality stainless steel for long life.

Diameter: 80mm  
Length: 140mm  
Projection: 90  
Code: GFS-LV

Use with 12V transformer.  
Code: T-105-IP65

## G-1B



A robust and versatile spotlight which can be surface mounted or spiked in the ground.

Die-cast aluminium.  
Complete with 2m of flex.

Diameter: 90mm  
Length: 150mm  
Projection: 95mm

Available in GU10 and low voltage.

## G-1S



Also available in silver or green  
Die-cast aluminium.  
Complete with 2m of flex.

Diameter: 90mm  
Length: 150mm  
Projection: 95mm

Available in GU10 and low voltage.

## G1-1G





## Diamond



Contemporary black/chrome GU10 bar.

Height: 135mm  
Length: 900mm

Code: GB-57600-4

All spot lights come complete with GU10 halogen lamps.  
For a low energy option we would recommend upgrading to GAP SMD30's



3 spot plate

Height: 135mm  
Diameter: 240mm

Code: GB-57600-3

Single spot

Diameter: 160mm  
Projection: 110mm

Code: GB-57600-1

## Bullet



Brushed chrome GU10 bar.

Height: 150mm  
Length: 760mm

Code: 54940/17/15

All spot lights come complete with GU10 halogen lamps.  
For a low energy option we would recommend upgrading to GAP SMD30's



3 spot plate

Height: 160mm  
Diameter: 300mm

Code: 54949/17/15



Single spot

Height: 118mm  
Length: 130mm

Code: 54944/17/15

## LED Shaver light



Our new IP44 LED bathroom fittings are a high quality, energy efficient solution, with a contemporary slimline design.

LED 24 x 0.2w 5050 chip.  
Built in LED driver  
Colour temp: 3000k  
Length: 536mm  
Width: 60mm  
Height: 50mm

Code: Mayfair-shave

## LED Mirror light



Polished chrome finish with white glass surface.

LED 24 x 0.2w 5050 chip.  
Built in LED driver  
Colour temp: 3000k  
Length: 455mm  
Width: 60mm  
Height: 50mm

Code: Mayfair

## Aqua

Modern IP44 flush bathroom fitting



Polished chrome  
Max 60w es  
Code: 32010/11/10



Polished chrome  
Max 25w G9  
Code: 32009/11/10



Satin chrome  
Max 60w es  
Code: 32010/17/10



Satin chrome  
Max 25w G9  
Code: 32009/17/10

## IP44 Spotlights



Contemporary style with stainless steel finish and polished chrome edge.

Code: GAP-7443CC



Contemporary style with stainless steel finish and polished chrome edge.

Code: GAP-7444CC

All spot lights come complete with GU10 35w halogen lamps. For a low energy option we would recommend upgrading to GAP luxeon lamps

## Bathroom pull switches

6 Amp 2 way ceiling switch

Polished chrome, satin chrome, polished brass, antique gold

Deluxe range Code: P.SW-DELUXE



Classic range Code: P.SW-CLASSIC



Shower range Code: P.SW-50A



## Bathroom pull chains

Polished chrome, satin chrome, polished brass, antique gold



Diamond crystal pull chain

Code: P.CH-DIAMOND

Decorative pull chain

Code: P.CH-CLASSIC

Crystal ball pull chain

Code: P.CH-CRYSTAL

Deluxe pull chain

Code: P.CH-DELUXE

## DL-LED9-IP54



Lamp: 3x3W Luxeon  
 Lumen: 360LM  
 Volt: 240v-50-60Hz  
 Depth: 100mm  
 Diameter: 77mm  
 Cut-out: 65mm  
 Finish: Chrome, matt chrome, white.  
 Colour Temp: Daylight and warm white.  
 Code: DL-LED9-IP54

## 9W LED Downlighter



A complete maintenance free fitting that is a powerful low energy solution for downlight applications.

Lamp: 3x3W Luxeon  
 Lumen: 360LM  
 Input Voltage: 100-240v  
 AC/50/60HZ  
 Output Current: DC12v 350-700mA  
 Depth: 73mm  
 Diameter: 77mm  
 Cut-out: 65mm

Finish: Chrome, matt chrome, white.  
 Colour Temp: Daylight and warm white.

Available in fixed and adjustable

Code: DL-LED9  
 DLA-LED9

Contemporary design recessed LED downlighters. Adjustable tilt for light direction. Ideal for domestic and commercial installations.



LED power: 3x1 high powered LED  
Luminous flux: 2101LM  
Housing: Aluminium  
Beam angle: 30/60 degree  
Colours available: Warmwhite and coolwhite.  
Code: DL-LED3W



LED power: 7x1w high powered LED  
Luminous flux: 500LM  
Housing: Aluminum  
Beam angle: 30/60 degree  
Colours available: Warmwhite and coolwhite.  
Code: DL-LED7W



LED power: 18x1w high powered LED  
Luminous Flux: 1300LM  
Housing: Aluminium  
Beam angle: 30/60 degree  
Colours available: Warmwhite and coolwhite.  
Code: DL-LED18W

## LED Modules



LED: 3 x 1W CREE  
Luminous Flux: 300Lm  
Colour Temp: Warmwhite (3000k)  
Daylight (6000k)  
Material: Aluminium body  
Diameter: 50mm  
Depth: 25mm  
Code: LED03



LED: 3 x 1W RGB  
Beam Angle: 60 degree  
Material: Aluminium body  
Input Current: 350ma  
Diameter: 50mm  
Depth: 25mm  
Code: LED03RGB

## Luxeon

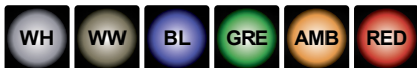


LED: 3 x 1.8W Luxeon  
 Lumen: 240-300LM  
 Beam angle: 30  
 Life: Up to 50,000 hours  
 High lumen output makes this LED lamp a genuine replacement for 40w halogen. Ideal for focal lighting.  
 Code: LED-3x1  
 LED-3x1LV



LED: 3 x 1.2W Luxeon  
 Luminous Flux: 280  
 Beam Angle: 38  
 Colour Temp: warmwhite (3000k)  
 Daylight (6000k)  
 Code: L-4

Available colours



## 7W Dimmable



High power dimmable LED replacement lamps.

LED: 3 x 2W Bridgelux  
 Luminous Flux: 450LM  
 Colour Temp: Warmwhite (3200k)  
 Daylight (6000k)  
 Beam Angle: 38  
 Material: Aluminium body  
 Optics: glass  
 Code: L-7DIM-B



LED: 3 x 2W Epistar  
 Luminous Flux: 450LM  
 Colour Temp: Warmwhite (3200k)  
 Daylight (6000k)  
 Beam Angle: 38  
 Material: Aluminium body  
 Optics: glass  
 Code: L-7DIM

### 3W Luxeon



3W Luxeon LED lamp.  
Available in GU10 and low voltage  
Code: L-3

Available colours



Multi colour changing GU10 lamp:  
16 different colours, with fade or  
smooth feature.  
LED: 1 x 3W RGB Luxeon  
Code: L-3RGB



### 5W RGB Luxeon



5W Colour Changing LED  
Multi colour changing lamp, 16  
different colours, 4 Programmes:  
Flash, smooth, strobe, fade.  
Unlimited lamps can be operated by  
one remote.  
Sequential switching by main switch  
will enable all lamps to colour  
change at the same time.

Code: L-5WRGB  
L-5WLVRGB  
L-5WESRGB  
L-5WRGB-REM



## SMD LED

SMD (Surface Mounted Design) LED is an excellent replacement for halogen. The beam angle of 120 degrees is so much wider than most other LED

lamps, creating a more even spread of light and eliminating shadows. This cooler running lamp will extend the life of both the lampholders and fitting.

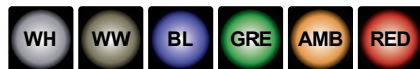


60 x SMD LED  
LED power: 3.5W  
Beam angle: 120  
Luminous flux: 300LM  
Input voltage: 220v AC  
Housing: Aluminium cup  
Optics: Glass  
Code: SMD-60LV



60 x RGB SMD  
LED power: 3.5W  
Beam angle: 120  
Input voltage: 220v AC  
Housing: Aluminium cup  
Optics: Glass  
Code: SMD-RGB

Available colours



## SMD lamps

We have used 5050 SMD to achieve maximum brightness, making this retro fit GU10 lamp equivalent to a 50w halogen.



30 x 5050 SMD LED  
 LED power: 5W  
 Beam angle: 120  
 Luminous flux: 400LM  
 Input voltage: 220v AC  
 Housing: Aluminium cup  
 Optics: Glass  
 Available in GU10 and low voltage.

Code: SMD-30

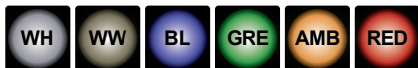
A perfect replacement G4 lamp for under cabinet lighting.



24 x 5050 SMD  
 LED power: 2W  
 Beam angle: 120  
 Luminous Flux: 120LM  
 Input voltage: 12V AC/DC  
 Input current: 13mA  
 Available colours: warmwhite, coolwhite, daylight.

Code: G4-SMD

Available colours



LED Power: 1x3W Samsung  
 Equivalent to 40W halogen  
 Colour Temp: Warmwhite (2700k)  
 Housing: White ceramic with glass head  
 Dimensions: 37mm x 105mm  
 Available in bc and es cap  
 Code: L-DIMCE14



LED Power: 2W  
 Equivalent to 25W Halogen  
 Colour Temp: Warmwhite (2700k)  
 Dimensions: 37mm x 96mm  
 Available in es cap  
 Housing: Glass  
 Code: L-SMD-CE14C/F



LED Power: 3.5W  
 Equivalent to 40W Halogen  
 Colour Temp: Warmwhite (2700k)  
 Daylight (6000K)  
 Dimensions: 50mm x 60mm  
 Available in bc and es cap  
 Housing: Glass  
 Code: L-SMD-G/E22C/F  
 L-SMD-G/E27C/F



## AR111 LED



LED power: 5W  
 Light source: 69 x SMD LED  
 Optics: Glass  
 Luminous flux: 400LM (coolwhite)  
 Housing: Aluminium cup  
 Diameter: 111mm  
 Colours available: Warmwhite and coolwhite.



LED power: 10W  
 Light source: 147 x SMD LED  
 Optics: Glass  
 Luminous flux: 880LM (coolwhite)  
 Housing: Aluminium cup  
 Colours available: Warmwhite and coolwhite.



LED power: 9W  
 Light source: 9 x 1W LED  
 Optics: Lens  
 Luminous flux: 650LM (coolwhite)

## PAR SMD



Size: PAR20  
 LED power: 5W  
 Light source: 80 x SMD LED  
 Optics: Glass  
 Luminous flux: 450LM (coolwhite)  
 Code: SMD-PAR20

Size: PAR30  
 LED power: 7W  
 Light source: 100 x SMD LED  
 Optics: Glass  
 Luminous flux: 600LM (coolwhite)  
 Code: SMD-PAR30

Size: PAR38  
 LED power: 10W  
 Light source: 147 x SMD LED  
 Luminous Flux: 880LM (coolwhite)  
 Code: SMD-PAR38

All housings: Aluminium cup  
 Colours available: Warmwhite and coolwhite.

## Low energy lamps



Spiral CFL  
Spiral 9W to 20W, es and bc  
A-Rated Efficiency  
8,000 hours  
Available in warm white and daylight.  
Code: L-S(9-20) ES  
L-S(9-20) BC



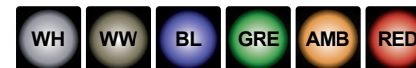
GU10 CFL  
Compact fluorescent GU10 7W-13W  
Excellent low energy equivalent to halogen.  
Available in warm white, cool white and daylight.  
8,000 hours  
Code: L-CF7(W,D)  
L-CF9(W,D)  
L-CF11(W,D)  
L-CF13(W,D)

## 21 LED lamp



Our 21 LED diode GU10 lamps are a great low power option for feature lighting.  
Power: 1.2W  
Cap: GU10 or LV  
Life: 50,000 hrs  
Available in GU10 and low voltage,  
Code: L-1  
L-1LV

Available colours



## Transformers



60va Transformer  
Dimmable electronic transformer  
Suitable for L/V halogen lamps  
Length: 75mm  
Width: 37mm  
Height: 25mm  
Code: T-60T



105va and 150va Transformers  
Dimmable electronic transformer  
Suitable for L/V halogen lamps  
Length: 165  
Width: 45mm  
Height: 25  
Code: T-105T  
T-150S



210va Transformer  
Dimmable electronic transformer  
Suitable for L/V halogen lamps  
Length: 180  
Width: 46mm  
Height: 34  
Code: T-210S

## LED Drivers



For all products requiring a constant current supply (350mA) for up to 9 LED 1W lamps, wired in series.  
Fitting available in IP68  
Code: T-350ma



For all products requiring a constant voltage supply (24VDC) up to 15W, wired in parallel.  
Fitting available in IP68  
Code: T-24VDC  
T-IP68-24VDC



Drivers for 12v LED striplight and lamps.  
5W, 10W, 30W, 50W, 60W, 100W  
150W, 250W  
Please ensure that you select the appropriate driver for the amount of strip to be powered.  
Code: T-DRIVER

## RGB controllers



Code: T-4000-RGB

Over 4000 colours available with various colour changing programs.

Memorises setting when switched off with remote or at mains.

For runs exceeding 20 m a Booster is also required



Code: T-CONTROLLER-RGB

11 functions, with 7 different colours and 4 colour changing programs.

Programs can be varied in speed and is simple to use.

Requires 12V driver.

For runs exceeding 20 metres  
Booster(s) also required

Code: T-BOOSTER-RGB



Code: T-DIMMER-STRIP

Dims single colour LED strip and on/off function via remote.

Memorises setting when switched off with remotes or at mains.

Can control up to 20 metres of our standard LED strip.

Requires 12v driver

## RGB dimmers



Code: T-RGB Touch

Touch sensitive RGB controller. Compatible with all GAP RGB products, to achieve various colours and colour changing features.



Code: T-DIM-CONTROLLER-RGB

RGB dimming controller  
21 functions, with 7 different colours and various colour changing programs.

Programs can be varied in speed and everything dimmed.

12V 12 A

Requires 12v driver

For runs 20 metres booster(s) also required.



Code: T-BOOSTER-RGB

Only required for lengths of RGB LED strip exceeding 20 metres.

One booster for every additional 20 m of RGB LED strip.

Requires 12v driver.

## LED Workflood



48 x F8 LEDs  
 13000-15000 lumens  
 IP44 protection  
 Operating voltage: DC 12v  
 Accessories: 120-240v AC adapter  
 and 12v DC car charger  
 Battery: NI-MH Rechargeable  
 (1300ma)  
 Code: LED-WF

## LED Worklight



Code: LED-WORK



Home charger



Docking station



Car charger



Hanging hook



Magnet



Flashlight

Rechargeable work light & flash light  
 60 super bright white LED worklights  
 18 super bright white LED torch  
 Docking station with charger: Car  
 charger, 110-240v charger and  
 12v charger  
 Water, oil and shock resistant  
 Blister packed

## LED Headtorch



3W High Powered LED

Material: Aluminium  
 2 Light output modes  
 Emergency flash mode  
 Adjustable head strap  
 Allows hands free operation  
 Blister packed

Code: LED-HEAD3W

## Led Torch



3W High Powered LED

Material: Aluminium  
 Dia: 30mm  
 Length: 190mm  
 Lumens: 100LM  
 Range: 30m  
 UP to 5 hours use 3 x AA  
 Weatherproof  
 Blister packed

Code: LED-TORCH-3W

## Accessories



IP67 Junction boxes  
 for use with GL116 and GL119

Code: JB series  
 for use with GL118

Code: JB parallel



Low voltage lampholder.

Code: LV-LH



GU10 Lampholder  
 GU10 Lampholder + Stirrup

Code: L-LH-GU10





GAP...

lighting the way ahead

*proud sponsors of Tony Gilham*  
(participant in the British Touring Cars Championship)