



# Environment Policy

for Dolphin Products Company

Revision May 2014





Dolphin Blue promoting Sustainability in the Washroom.... when you are aiming for BREEAM Excellence!

# An introduction with Contents

Dolphin is a family business, established in 1999 specialising in the supply of washroom equipment and plastic injection moulding.

Operating principally from the head office and manufacturing plant in Bodiam, East Sussex, Dolphin also has offices in Bedford and Aldeburgh.

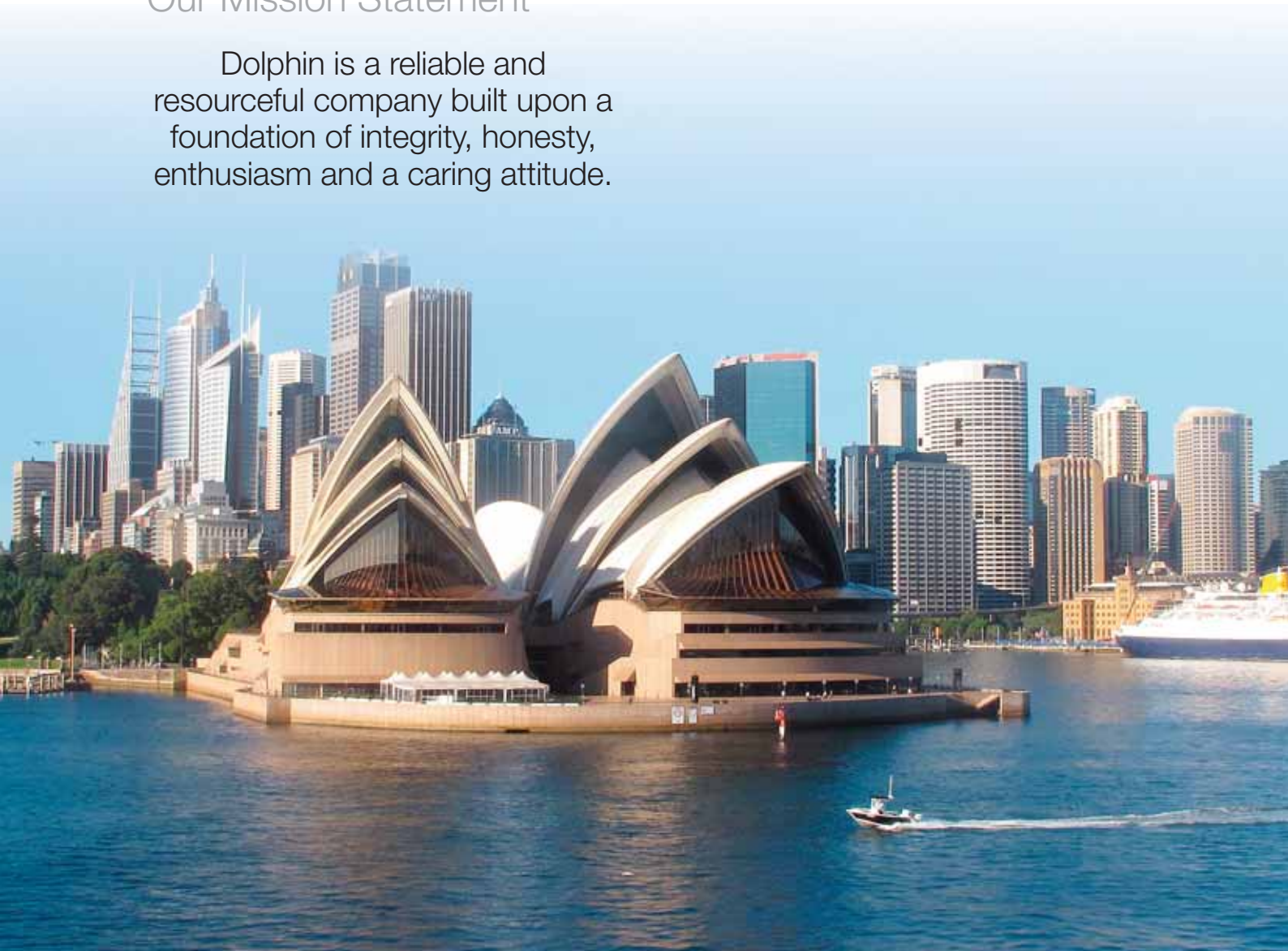
The Dolphin Mission Statement embodies the standards and aims that are worked to:

This report covers Dolphin's structure, quality standards and policies in relation to care of the environment and sustainability of materials, and is comprised of the following documents:

Organisation chart	4
Quality statement	5
Environmental policy statement	6
Environment policies	
- sourcing of materials	7
- operations during manufacture	8
- recycling of waste material	9
Health and safety policy statement	10
Carbon Trust	11

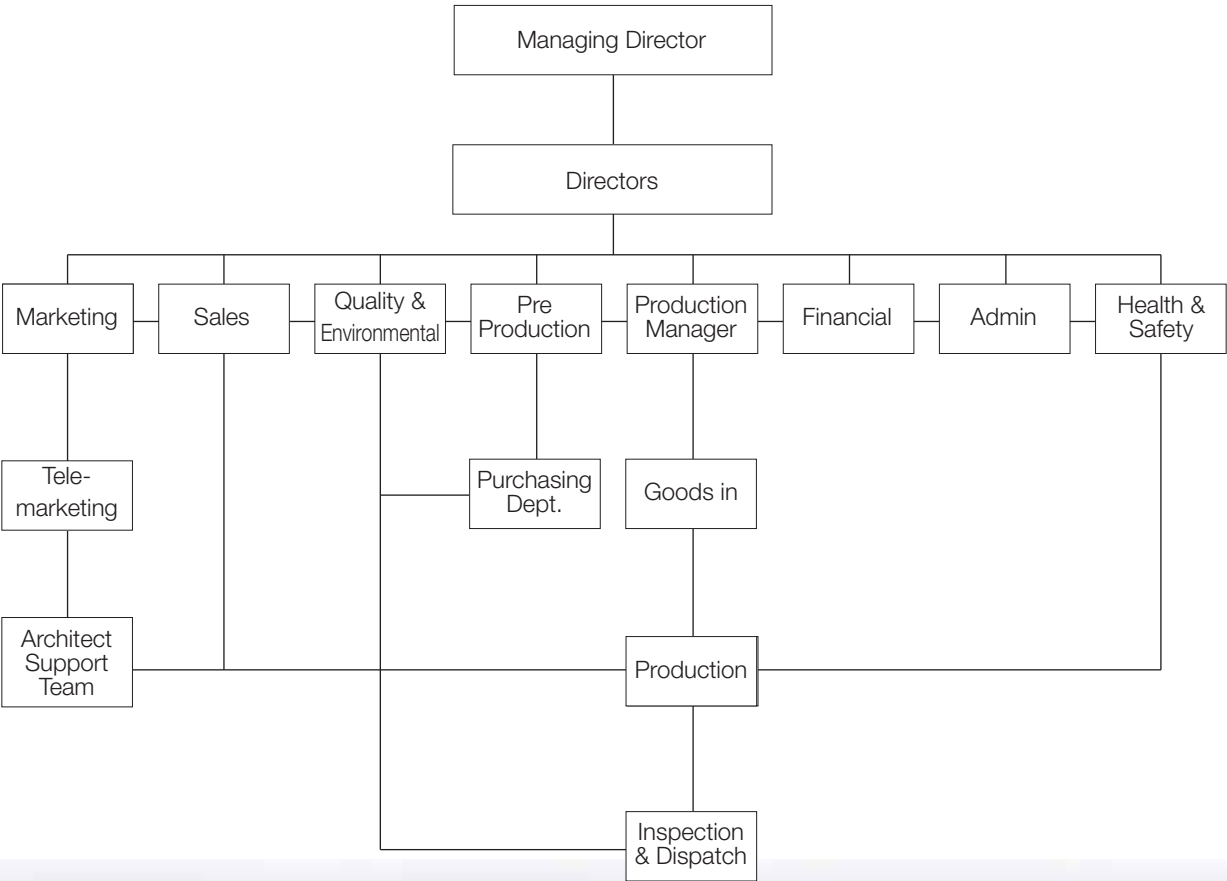
## Our Mission Statement

Dolphin is a reliable and resourceful company built upon a foundation of integrity, honesty, enthusiasm and a caring attitude.





# Organisation Chart



# Quality Statement – 2014

04/05



## **Dolphin is an ISO9001 Accredited Company.**

Dolphin is committed to ensuring the highest quality washroom dispensers, infrared taps, flush valves, shower controls and hand dryers.

Quality checks are made before the plastic injection moulding process, throughout the manufacturing process, and on completion, and include amongst others the following:

- Material checked before manufacture to ensure that only highest quality material is used.
- Machinery thoroughly checked over before manufacture of each job.

- Ongoing machinery checks conducted during manufacture.
- Interim production checks during manufacturing process.
- Overall product check on completion of whole manufacturing process, with basic tests applied to ensure quality of finished article.

Dolphin manufactures in a clean, organised and well-maintained environment to ensure optimum manufacturing conditions.

Careful monitoring of the performance of companies used for despatch is carried out, to ensure that Dolphin quality is preserved right to the point of delivery.



ISO 9001  
Accredited





# Environmental Statement



## Waste Management

To endeavour to minimise waste product wherever possible utilising environmentally friendly and economical disposal methods. Recycle as much waste produced as possible from all sections of the company – manufacture, distribution and offices.

## Recycling and Use of Recycled Material

To utilise, and to promote the use of, recycled materials wherever practicable, ensuring that, materials are disposed of in an environmentally safe manner at the end of their useful life.

## Environmental Management Awareness

To raise and maintain a high level of understanding of, and participation in, environmental best practices by staff and suppliers in conducting Dolphin Products business.

## CPD Programme

Dolphin will continue to commit thousands of pounds to their CPD programme – ‘sustainability in the washroom’ in a strong effort to raise architect, client, contractor and end-user awareness of products available in the market place that can be used to reduce water and energy consumption in almost every development type.

## Product Development

An ongoing programme to develop and source new and improved ways of saving water and energy in washrooms; items include thus far Dolphin Blue range of infrared taps, flush valves, showers and the Dolphin Velocity hand dryer ranges, all of which offer significant energy and / or water savings.



## Dolphin is an ISO14001 accredited company

Dolphin Products aims to reduce the company's environmental impact in a number of key areas through a sustained, measured programme, focused on best practices:

### Suppliers

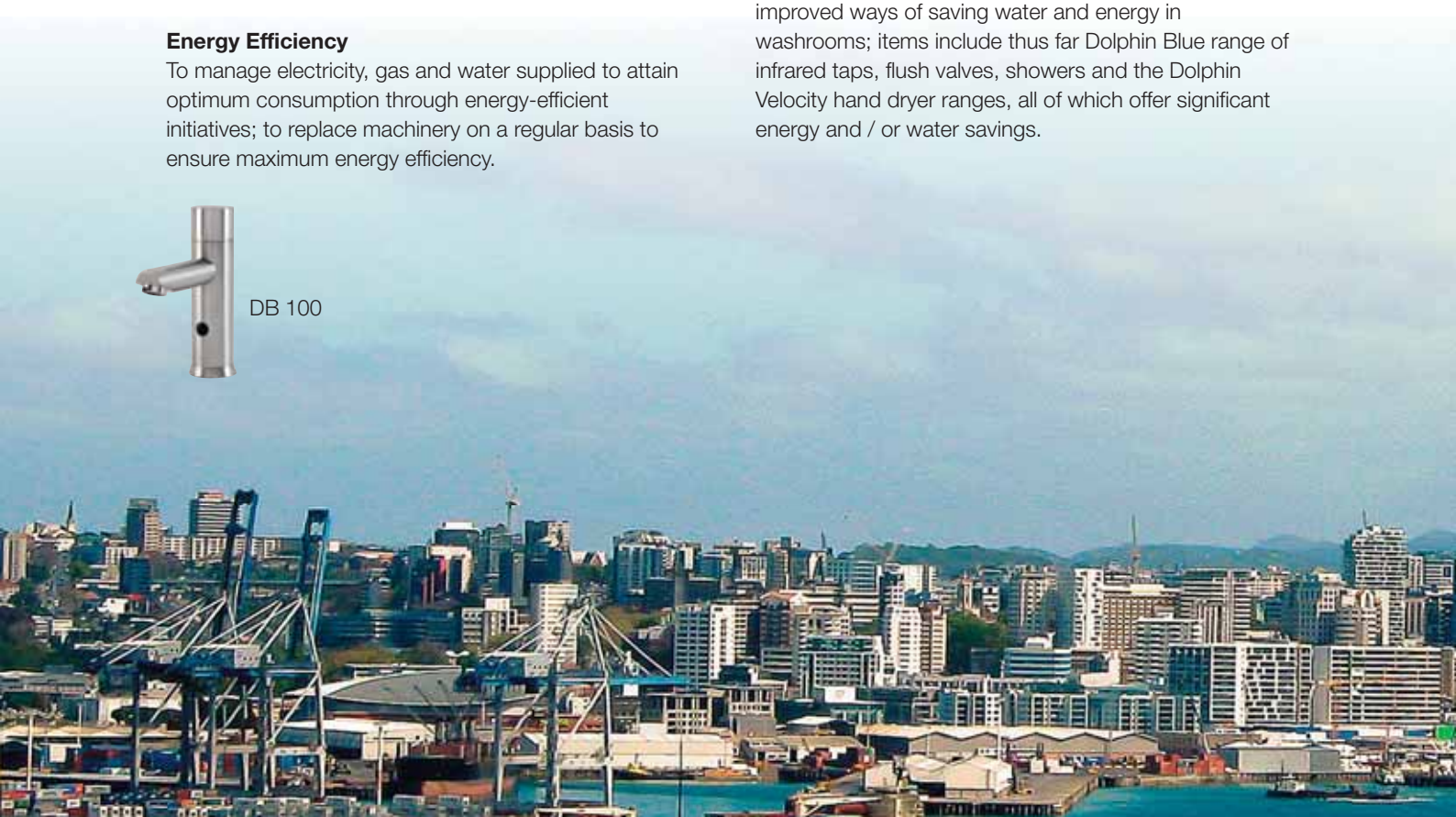
To work in partnership with our suppliers to ensure best environmental practice is followed both by supplier of goods and services to Dolphin Products.

### Energy Efficiency

To manage electricity, gas and water supplied to attain optimum consumption through energy-efficient initiatives; to replace machinery on a regular basis to ensure maximum energy efficiency.



DB 100



# Environmental Policies – 2014

06/07



## **Sourcing of materials and sub-contract product manufacture**

Dolphin pays attention in the sourcing of materials for manufacture, to the stance that suppliers take in relation to environmental issues, particularly in the following areas:

- Dolphin takes care in procurement of all complementary products used in manufacture, to try and buy products that show consideration for the well-being of the environment.
- Dolphin aims where possible to source 'regrind' plastic material in its plastic injection moulding process.
- Wherever possible, Dolphin source products from international suppliers / manufacturers who have policies in place showing a proactive, caring and responsible attitude to the earth's environment. Dolphin favours and chooses companies that whilst maintaining outstanding levels of quality use recycled materials and sustainable energy sources in the manufacturing process.





# Environmental Policies – 2014

## Operations during manufacture

Dolphin consistently monitors the impact that operations during manufacture, and the materials used within those operations, have upon the environment, and seek to minimise or eliminate negative impact, particularly in the following areas:

- Dolphin maintains optimisation of material use to ensure minimum wastage in manufacture.
- Dolphin monitors and reviews on a regular basis, energy usage during manufacturing processes, and introduces measures to reduce these where possible.
- Dolphin plan further capital investment in equipment and machinery, and aim wherever possible to further reduce harmful emissions.





# Environmental Policies – 2014

08/09

## Recycling of waste material

Dolphin aims to recycle wherever possible to ensure maximum use of waste produced and conservation of the earth's resources, particularly in the following areas:

- Dolphin shreds waste paper and uses it for packaging wherever possible.
- Dolphin aims to remove cardboard packaging used to cover products for transportation, at point of delivery, and bring back for re-use.
- Dolphin re-uses pallets on which goods are supplied wherever possible.
- Wherever possible, reject plastic parts or waste are reground to reduce waste to an absolute minimum.



# Health and Safety Policy Statement

Dolphin as an organisation shows a full commitment to health and safety throughout their activities.

Plant and equipment is thoroughly researched from an H & S perspective prior to purchase and is maintained in good working order, with systems of work in place to ensure the safety of employees and others when in operation.

Arrangements are made to ensure that articles and substances can be handled, stored, transported and used in a safe manner.

Dolphin employees are expected to take reasonable care of their own health and safety and that of other persons who may be affected by what they do, or don't do, at work. Information, instruction and training are therefore provided to enable employees to remain competent and up-to-date on the tasks they carry out and equipment they operate whilst at work. Supervision is applied at a level relevant to employees' experience, competence and familiarity with the workplace, equipment and tasks.

Safe means of access and egress are available within all areas, and the workplace and welfare facilities are maintained to provide a working environment free, so far as is reasonably practicable, from risks to health and well-being.



In order to achieve a safe and healthy organisation, Dolphin operate under a comprehensive set of health and safety procedures which state the methods of working used to ensure legal compliance and define the responsibilities placed on various parties to ensure these procedures operate effectively.

Working practices and documentation are reviewed periodically to ensure they remain effective and take account of improvements required by new or updated legislation.

The directors at Dolphin give their full support to the H & S Policy with all employees co-operating enthusiastically and fully in helping to implement and maintain it, and with safety taking precedence over expediency at all times.





# Carbon Trust Accreditation

10/11



With our reputation for innovation in developing energy and water saving products, and as holders of ISO14001 accreditation, we are proud of our commitment to caring about the environment around us.

As part of our on-going commitment in this area, Dolphin Dispensers are pleased to have been awarded Accredited Supplier status by the Carbon Trust.

BC 120



The Carbon Trust Accredited Supplier scheme is the market-leading scheme for high quality energy efficient equipment and renewable technology suppliers. It is a trusted quality standard that provides independent validation and recognition of our skills and services. It also demonstrates that we have met, or exceeded, the Carbon Trust's criteria for delivering thoughtful, well-designed energy efficient washroom systems.

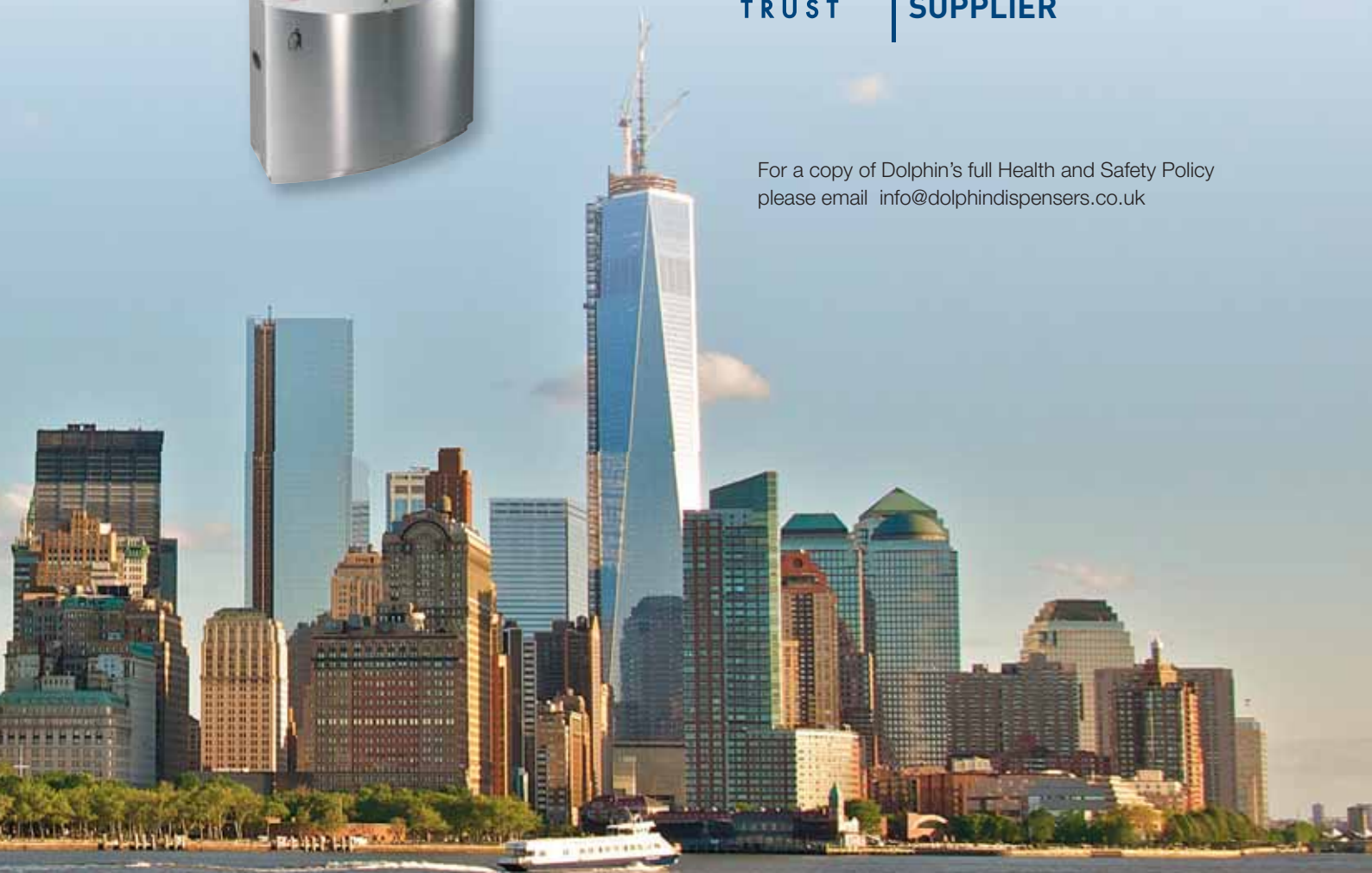
Whether it's our innovative 'plug and play' Behind Mirror Modular System, WRAS approved products or products that make a positive contribution to BREEAM assessments, one of our expert advisers is always on hand to help you fulfil your commitment to caring for the environment.

Speak to one of our advisers now on 01424 20 22 24 or browse our website to find the best environmentally friendly products suited to your washroom design.



**ACCREDITED  
SUPPLIER**

For a copy of Dolphin's full Health and Safety Policy please email [info@dolphindispensers.co.uk](mailto:info@dolphindispensers.co.uk)







washrooms worth experiencing

Dolphin

Southpoint, Compass Park, Bodiam  
Robertsbridge TN32 5BS

Tel: 01424 202224

Fax: 01424 205200

www: [dolphindispensers.co.uk](http://dolphindispensers.co.uk)

info@[dolphindispensers.co.uk](mailto:dolphindispensers.co.uk)

