



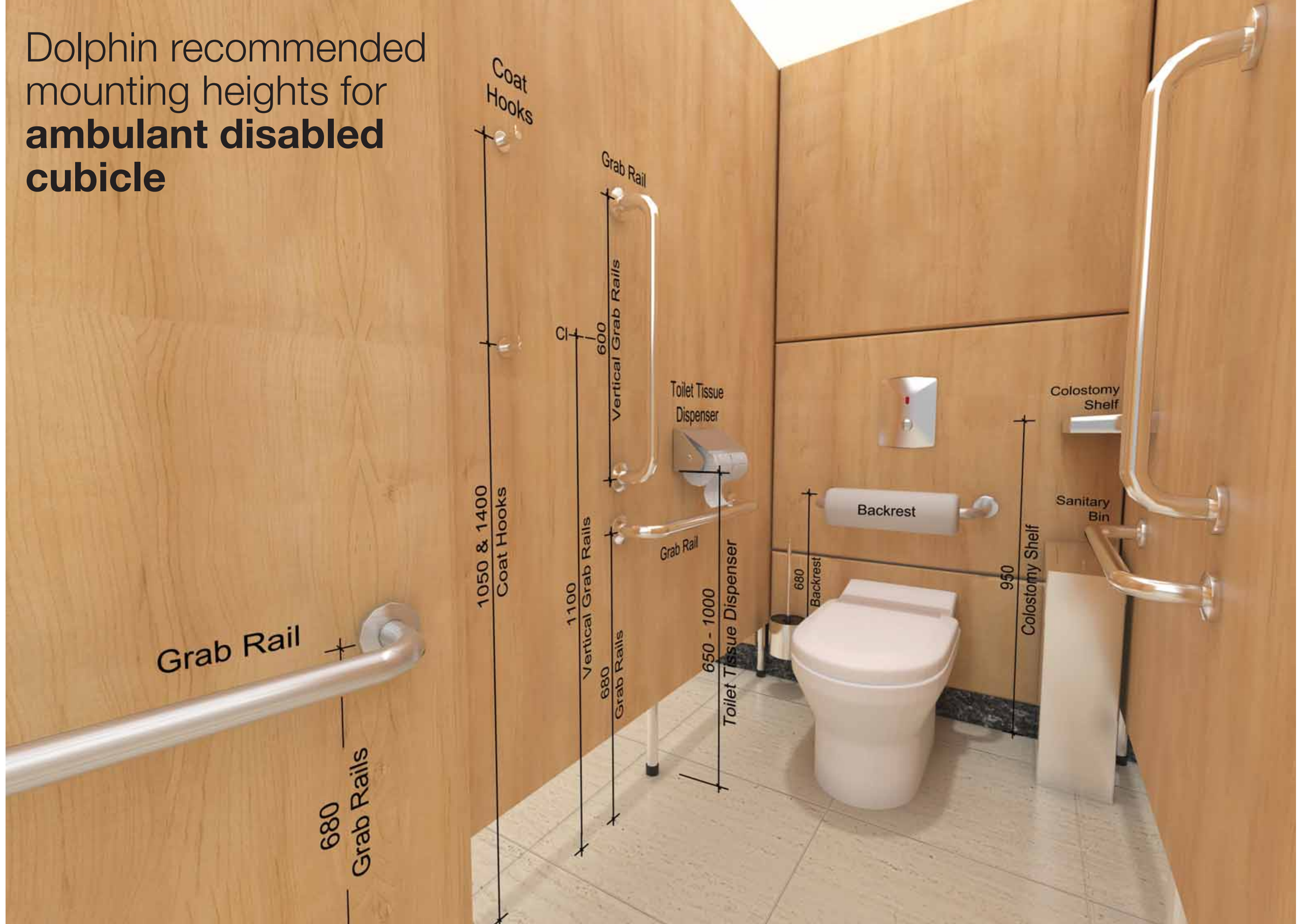
Recommended Mounting Heights



Dolphin recommended mounting heights for accessible washrooms



Dolphin recommended mounting heights for **ambulant disabled cubicle**

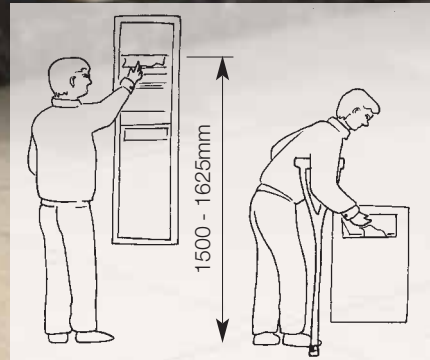


Dolphin recommended mounting heights for standard washrooms accessible to ambulant disabled users



Recommended mounting heights for washrooms accessible to ambulant disabled users

When designing the washroom, the maximum and minimum mounting heights for each item should be considered carefully. The 'Dolphin Team' sees these guide lines as a good guide for all washrooms (except Accessible Washrooms, see page 420) including washrooms accessible to ambulant disabled users. The dimensions outlined on this sketch are intended to provide a guide only and in the main follow British Standard BS8300:2009. However, each washroom project should be considered on its own merits, ensuring facilities are designed and fittings chosen and mounted in such a way as to give all washroom users, whatever ability, the most comfortable washroom experience possible. Please do not hesitate to contact the Dolphin Technical Helpline for assistance at any time – 01424 202224.



Dimensions associated with comfortable and extended reach ranges (in mm)

Person	Access	Reach angle	Height		Depth	
			Comfortable	Extended	Comfortable	Extended
Ambulant Disabled	Front	+70°	1500	1625	200	250
		Horizontal	(850)	(850)	280	450
		-24°	750	700	180	310

Dolphin recommended mounting heights for **standard washrooms**



Nappy Changing Unit installation stainless steel units

Steel Units

Each stainless steel unit can either be surface-mounted or recessed.

A matching stainless steel cover frame is available for surface-mounted installations.



Recessed fixing in masonry

Each unit has six recess mounting holes. Form the opening in the brick or blockwork wall, incorporating an appropriate lintel to span the opening. Install rough timber fixing grounds and screw fix the changing unit to the reveals of the opening using minimum 5mm screws. Before final tightening, insert packing shims as necessary for alignment and to obviate any distortion on tightening. Use either flat head screws with finishing washers and flat washers or pan head wood screws with flat washers, making sure that consideration is given to the operating clearance and that the back flange of the unit neatly masks the opening and the termination of the wall finish.



Recessed fixing in studwork

Timber double stud blocking is necessary around the opening. After locating the unit within the framed opening, insert packing shims as necessary for alignment and snug fitting. Secure the unit to the blocking using minimum 5mm flat head wood screws with finishing washers and flat washers or pan head wood screws with flat washers, making sure, as with all fixing methods, that consideration is given to the operating clearance.



Surface mounting

The unit can be fixed directly through the back plate using screws and appropriate wall plugs and plastic caps to cover the screw heads. A matching stainless steel cover frame is available for surface-mounted installations which engages the changing unit with a snap fit. The cover frame covers the otherwise exposed edges and provides a neat finishing surround.

Recommended mounting height to base of unit:

Standard – 900mm
Wheelchair – 790mm

- In all mountings, the flat fender washer must be inserted underneath the finishing washer: installing the unit using only the finishing washer may result in the washer biting directly into the body of the unit with consequent damage and loss of stability.
- Nappy changing units are no stronger than the anchors or substrates to which they are attached and as such must be firmly secured in order to support the loads for which they are intended.

Nappy Changing Unit installation polyethylene units

Polyethylene Units

Each unit has four mounting ports based on a traditional 400mm stud spacing.

Two additional ports are provided for optional use. All fixings are supplied with each unit to cater for fixing to either solid masonry or studded wall constructions.



Recommended mounting height:

Standard – 900mm
Wheelchair – 790mm

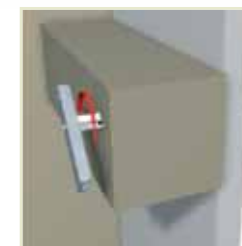


Fixing to masonry

Secure the unit to brick and concrete block substrates using four 5mm x min.75 mm wood screws into proprietary wall plugs. The flat fender washer is to be inserted underneath the finishing washer. Finally, insert the snap-fit plastic covers in each fixing port to cover the fixings.



1 Mark out and drill fixing holes. Insert toggle.



2 Twist toggle freely to gain purchase on the supporting member. There should be a minimum cavity clearance of 65mm to allow the toggle bar to turn.



3 Push the integral disc along the toggle to make a snug purchase on the wall face. The toggle strands are ratched to hold the disc in place.



4 Cut off the surplus projection of the toggle and offer up the unit for fixing.



5 Align and engage the fixing bolt in the threaded toggle bar with washers engaged. The flat fender washer is to be inserted underneath the finishing washer. Finally, insert the snap-fit plastic covers in each fixing port.



Alternative fixing method

The BC 100-EH/BC 100-EV unit can be fitted with the EZ Mount backer plate to provide an alternative method of fixing to studded walls.

Two galvanised steel mounting bars are supplied, one pre-fixed to the rear of the unit and the other loose for fixing to the wall. The wall bar has a multitude of fixing holes to cater for variable stud positions.



washrooms worth experiencing

Bell-Chem Products Company
Southpoint, Compass Park, Bodiam, Robertsbridge TN32 5BS

Tel: 01424 202224
Fax: 01424 205200
www: dolphindispensers.co.uk
info: info@dolphindispensers.co.uk

