

PRODUCT CATALOGUE



uPVC Cable Management
Aluminium Cable Management
Fixings & Accessories

Installation Materials Division
...the name behind the brands



uPVC Cable Management

Manufacturing in Britain for over 40 years, Centaur has become a leading name in the uPVC cable management market.

Centrally located in Redditch, England, Centaur utilise a fast and efficient distribution network.

Combining continued investment and a wealth of expertise, Centaur boast a vast selection of cable management products enabling a complete installation. A dedicated fabrication section allows bespoke offerings tailor made for individual requirements.

Striving to do our utmost for the environment, Centaur aim to minimise the output of CO₂ emissions through the recycling of non-biodegradable raw materials.





Content

Meridian uPVC Trunking.....	2
President uPVC Trunking.....	8
President Aluminium Trunking.....	14
President Bench Trunking.....	18
President Power Poles & Posts.....	22
Campus Range.....	24
Kensington Trunking.....	30
Maxi Trunking.....	34
Mini Trunking.....	36
Red Range.....	40
Conduit.....	42
Surface & Socket Boxes.....	50
Dry Lining Boxes.....	52
Bespoke Products.....	54
Technical Information.....	58
Index.....	64



Meridian Features & Benefits

MERIDIAN

Three Compartment Trunking

Design Features:

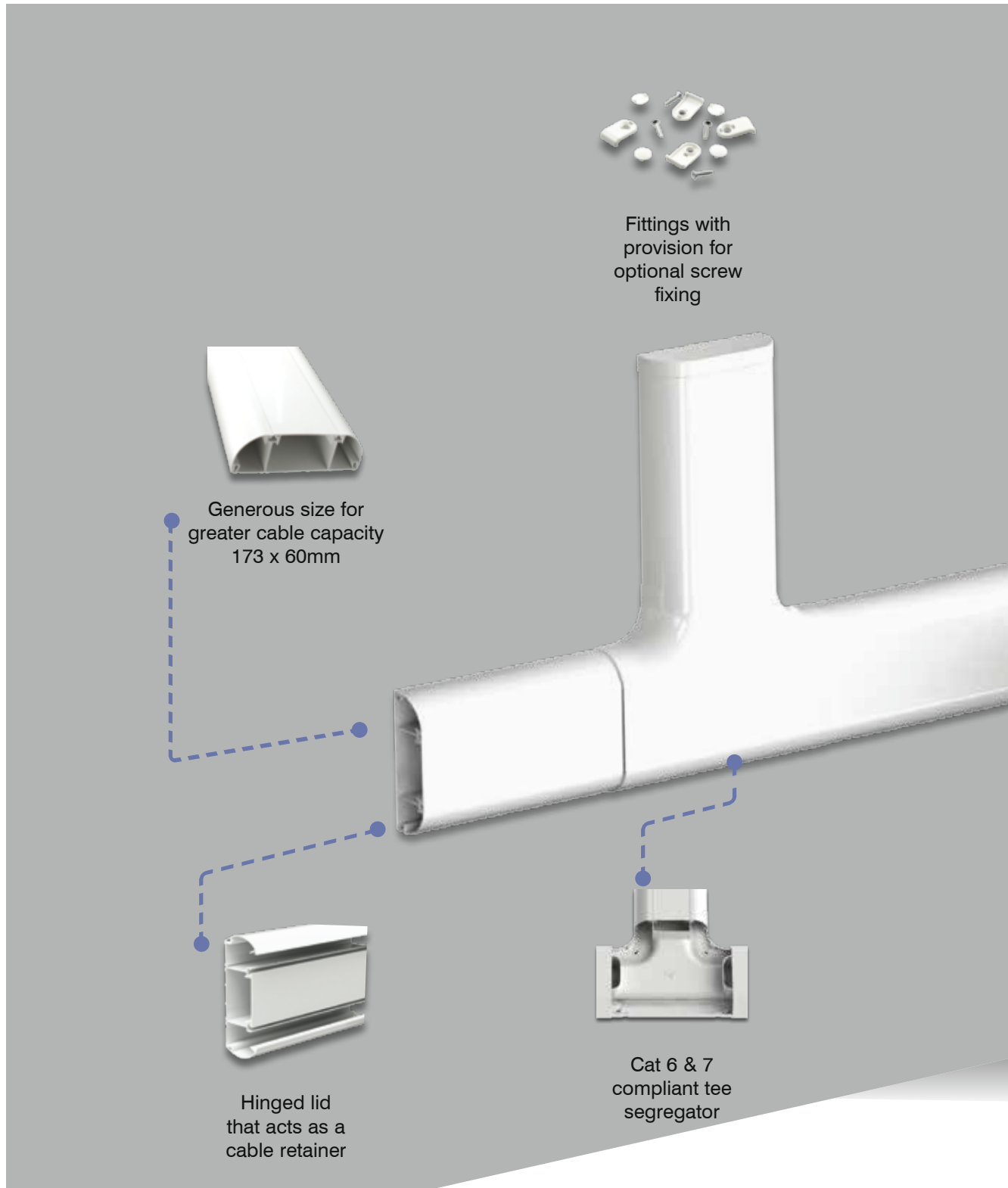
- Cat 6 & Cat 7 compliant.
- External angle, flat tee and flat angle come with data sweep to maintain necessary bend radius and cable segregation.
- Flat tee and flat angle over lap trunking to prevent the need of additional joint couplers.
- Clip on accessories.
- Manufactured from high impact uPVC compound.
- High concentration of titanium dioxide blended into the uPVC compound for maintaining longer lasting colour stability.
- Contrasting grey centre lid available for Part M compliance.
- Available in anti-microbial uPVC.
- Can be supplied in bespoke colours upon request.
- Optional screening available upon request.
- Available in light oak and mahogany wood effect finishes.
- Internal angle comes with internal plate to maintain trunking integrity.



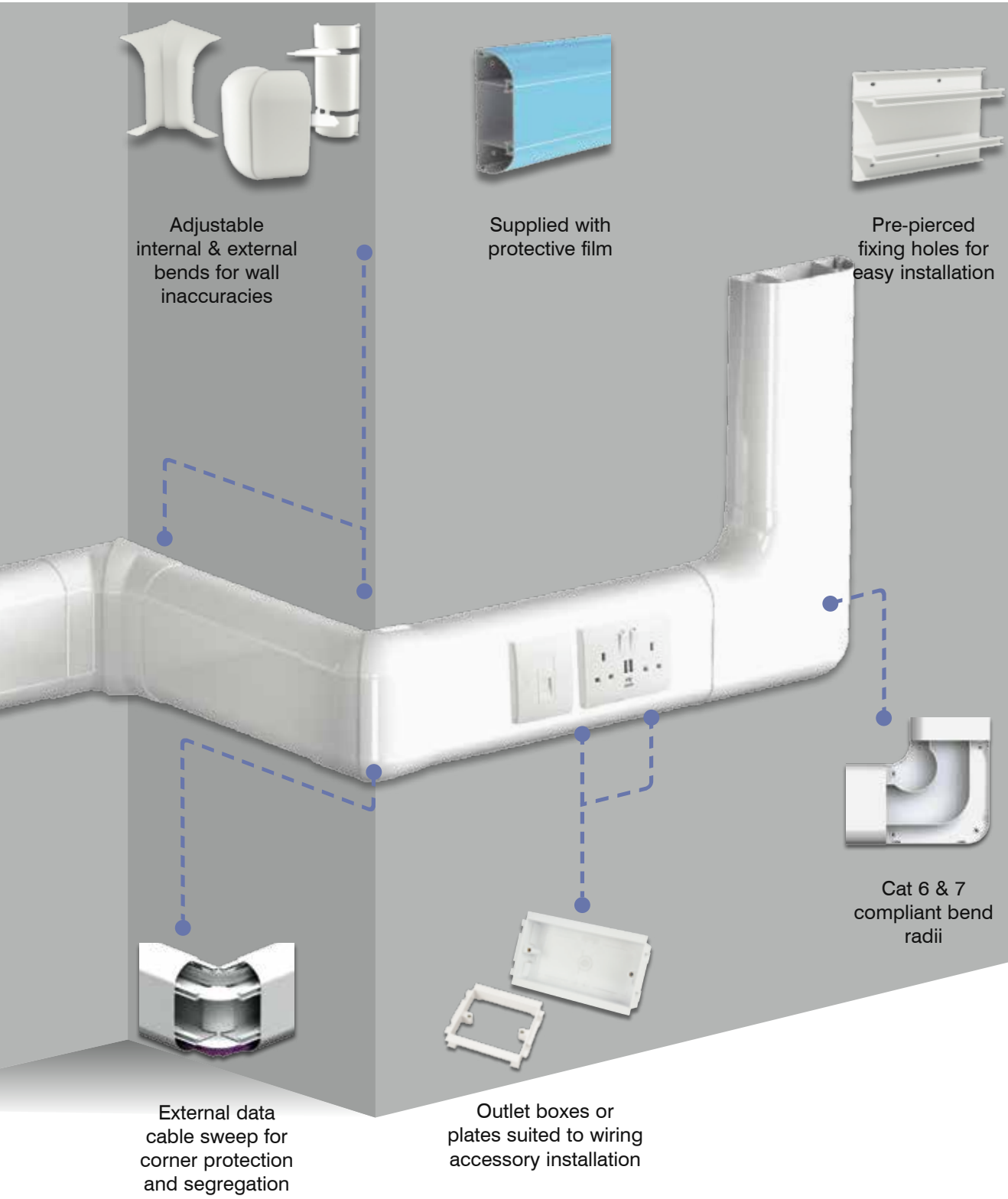
Meridian Features & Benefits



Meridian Features & Benefits



Meridian Features & Benefits



uPVC Three Compartment Trunking



ACD 3



ACC 3



AECC 3



AIC 3



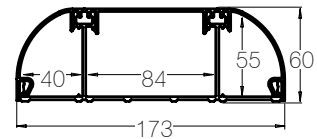
AEC 3



AFA 3

Three Compartment Dado Trunking

Description	Cat. No.	Pack Quantity
Cat 6 & 7 compliant trunking c/w lids	ACD 3	2 x 3m



Coupler

Description	Cat. No.	Pack Quantity
Radius dado coupler	ACC 3	2

End Cap

Description	Cat. No.	Pack Quantity
Radius dado end cap	AECC 3	2

Adjustable Internal Angle

Description	Cat. No.	Pack Quantity
Radius dado adjustable internal angle c/w internal plate (between 83° & 95°)	AIC 3	1

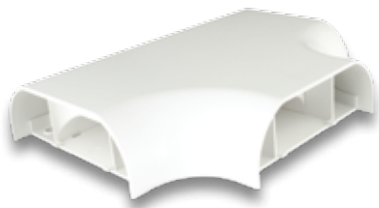
Adjustable External Angle

Description	Cat. No.	Pack Quantity
Radius dado adjustable external angle c/w data cable sweep (between 40° & 95°)	AEC 3	1

Flat Angle

Description	Cat. No.	Pack Quantity
Cat 6 & 7 compliant radius dado flat angle	AFA 3	1

uPVC Three Compartment Accessories



AFT 3

Flat Tee

Description	Cat. No.	Pack Quantity
Cat 6 & 7 compliant radius dado flat tee c/w with segregator	AFT 3	1



ASB 2

Outlet Boxes

Description	Cat. No.	Pack Quantity
Outlet box, 1 gang, 32mm	ASB 1	10
Outlet box, 1 gang, 32mm, 4 pillar	ASB 1V	10
Outlet box, 2 gang, 32mm	ASB 2	10
Outlet box, 3 gang, 32mm	ASB 3	5
Outlet box, 1 gang, 40mm	ASBC6 1	10
Outlet box, 2 gang, 40mm	ASBC6 2	10



ASP 1

Outlet Plates

Description	Cat. No.	Pack Quantity
Outlet plate, 1 gang	ASP 1	15
Outlet plate, 2 gang	ASP 2	15



ACL 1

Separate Profiles

Description	Cat. No.	Pack Quantity
Base unit	AB 3	2 x 3m
Radius lid	ACH 3	4 x 3m
Centre lid	ACL 1	4 x 3m
Part M compliant centre lid - grey	ACL 1G	4 x 3m



ECR 110W

Extension Collars

Description	Cat. No.	Pack Quantity
1 Gang, round corners, 10mm	ECR 110W	10
1 Gang, square corners, 10mm	ECS 110W	10
2 Gang, round corners, 10mm	ECR 210W	10
2 Gang, square corners, 10mm	ECS 210W	10



ACGE 3

Spares

Description	Cat. No.	Pack Quantity
Contrast plate - blue	APM 1BL	20
Contrast plate - grey	APM 1G	20
External corner data cable sweep	ACGE 3	6
Locking device c/w cap	ALD 3	50

President Features & Benefits

- An innovative design and aesthetically pleasing solution for cable management in hospitals, offices, schools, colleges, laboratories, hotels and public buildings. Offering substantial cable capacity and design appeal for today's modern buildings.
- The President uPVC cable management system allows a fast, easy and cost-effective solution.
- Variation of chamfered, square or skirting profiles, in high impact resistant uPVC.

President

Multi Compartment Trunking

Design Features:

- Clean line design for maximum aesthetic appeal.
- Large capacity multi-compartment design.
- Chamfered, square or skirting profiles.
- Square Dado Trunking available with Cat 6 & 7 fittings.
- Centaur white as standard. RAL/BS colours to order.
- Wood effect available in light oak and mahogany.
- Choice of 32mm or 40mm deep outlet boxes.

- 1 Double-skinned walls for added strength, stability and segregation.
- 2 A unique, positive locking device with caps for the moulded fittings provide fast installation and a neat appearance.
- 3 Pre pierced base for ease of fixing.
- 4 Blue protective film to maintain finish.



President Features & Benefits

- Centaur President trunking is an all British design and manufactured in accordance with the requirements of BS 4678, Part 4 (1982) and allows the installer to comply with BS 7671 (wiring regulations).



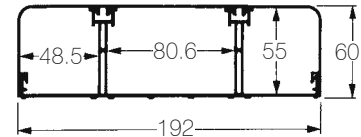
uPVC Multi Compartment Trunking



ASD 1

Three Compartment Square Dado Trunking

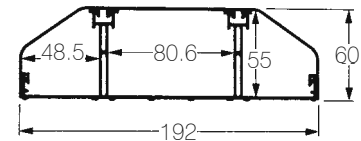
Description	Cat. No.	Pack Quantity
Cat 6 & 7 compliant trunking c/w lids	ASD 1	2 x 3m
When used with Cat 6 & 7 compliant accessories.		



ACD 2

Three Compartment Chamfered Dado Trunking

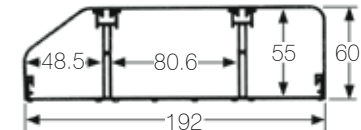
Description	Cat. No.	Pack Quantity
Trunking c/w lids	ACD 2	2 x 3m



ASKT 3

Three Compartment Skirting Trunking

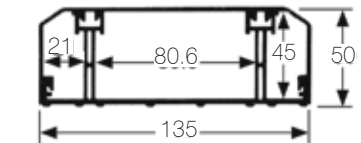
Description	Cat. No.	Pack Quantity
Trunking c/w lids	ASKT 3	2 x 3m



ACD 4

Three Compartment Semi Chamfered Dado Trunking

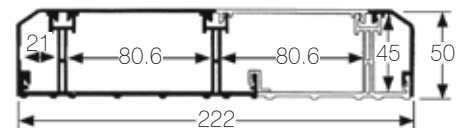
Description	Cat. No.	Pack Quantity
Trunking c/w lids	ACD 4	2 x 3m



ACD 5

Four Compartment Semi Chamfered Dado Trunking

Description	Cat. No.	Pack Quantity
Trunking c/w lids	ACD 5	1 x 3m



uPVC Multi Compartment Accessories



ACS 1

Coupler		
Description	Cat. No.	Pack Quantity
ASD 1 coupler	ACS 1	2
ACD 2 coupler	ACC 2	2
ASKT 3 coupler	ACSK 3	2
ACD 4 coupler	ACC 4	2
ACD 5 coupler	ACC 5	2



AECC 2

End Cap		
Description	Cat. No.	Pack Quantity
ASD 1 end cap	AECS 1	2
ACD 2 end cap	AECC 2	2
ASKT 3 right-hand end cap	AECSK-3RH	2
ASKT 3 left-hand end cap	AECSK-3LH	2
ACD 4 end cap	AECC 4	2
ACD 5 end cap	AECC 5	2



AISC6 1

Internal Angle		
Description	Cat. No.	Pack Quantity
Cat 6 & 7 compliant ASD 1 internal angle	AISC6 1	1
ASD 1 internal angle	AIS 1	1
ASD 1 45° internal angle (fabricated)	AIS 1/45	1
ACD 2 internal angle	AIC 2	1
ACD 2 45° internal angle (fabricated)	AIC 2/45	1
ASKT 3 internal angle	AISK 3	1
ASKT 3 45° internal angle (fabricated)	AISK 3/45	1
ACD 4 internal angle	AIC 4	1
ACD 4 45° internal angle (fabricated)	AIC 4/45	1
ACD 5 internal angle	AIC 5	1



AEC 4

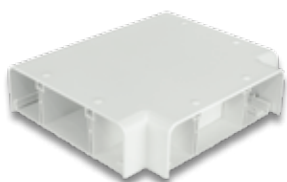
External Angle		
Description	Cat. No.	Pack Quantity
ASD 1 external angle	AES 1	1
ASD 1 45° external angle (fabricated)	AES 1/45	1
ACD 2 external angle	AEC 2	1
ACD 2 45° external angle (fabricated)	AEC 2/45	1
ASKT 3 external angle	AESK 3	1
ASKT 3 45° external angle (fabricated)	AESK 3/45	1
ACD 4 external angle	AEC 4	1
ACD 4 45° external angle (fabricated)	AEC 4/45	1
ACD 5 external angle	AEC 5	1

uPVC Multi Compartment Accessories



AFAU 3

Description	Cat. No.	Flat Angle
		Pack Quantity
ASD 1 flat angle	AFA 1	1
ACD 2 flat angle	AFA 2	1
ASKT 3 upward flat angle	AFAU 3	1
ASKT 3 downward flat angle	AFAD 3	1
ACD 4 flat angle	AFA 4	1
ACD 5 flat angle	AFA 5	1



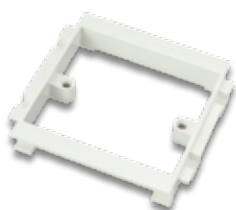
AFT 1

Description	Cat. No.	Flat Tee
		Pack Quantity
ASD 1 flat tee	AFT 1	1
ACD 2 flat tee	AFT 2	1
ASKT 3 upward flat tee	AFTU 3	1
ASKT 3 downward flat tee	AFTD 3	1
ACD 4 flat tee	AFT 4	1
ACD 5 flat tee	AFT 5	1



ASB 2

Description	Cat. No.	Outlet Box
		Pack Quantity
Outlet box, 1 gang, 32mm	ASB 1	10
Outlet box, 1 gang, 32mm, 4 pillar	ASB 1V	10
Outlet box, 2 gang, 32mm	ASB 2	10
Outlet box, 3 gang, 32mm	ASB 3	5
Outlet box, 1 gang, 40mm	ASBC6 1	10
Outlet box, 2 gang, 40mm	ASBC6 2	10



ASP 1

Description	Cat. No.	Outlet Plate
		Pack Quantity
Outlet plate, 1 gang	ASP 1	15
Outlet plate, 2 gang	ASP 2	15

uPVC Multi Compartment Accessories



ACH 4



AMC 2



ECR 110W



ASI/4



ALD 1

Separate Profiles

Description	Cat. No.	Pack Quantity
Base unit	AB 1	2 x 3m
Square lid	ASQ 1	4 x 3m
Chamfered lid	ACH 1	4 x 3m
Centre lid	ACL 1	4 x 3m
Part M compliant centre lid	ACL 1G	4 x 3m
Base unit (ACD 4)	AB 4	2 x 3m
Semi chamfered lid	ACH 4	4 x 3m

Mini Trunking Entry

Description	Cat. No.	Pack Quantity
CMT 2 square lid	AMS 2	2
CMT 5 square lid	AMS 5	2
CMT 2 chamfered lid	AMC 2	2
CMT 5 chamfered lid	AMC 5	2
CMT 2 semi chamfered lid	AMC 2/4	2

Extension Collar

Description	Cat. No.	Pack Quantity
1 Gang, round corners, 10mm	ECR 110W	10
1 Gang, square corners, 10mm	ECS 110W	10
2 Gang, round corners, 10mm	ECR 210W	10
2 Gang, square corners, 10mm	ECS 210W	10

Screening Insert

Description	Cat. No.	Pack Quantity
Metal screen insert (60mm)	ASI	10 x 3m
Metal screen insert (50mm)	ASI/4	10 x 3m

Spares

Description	Cat. No.	Pack Quantity
Contrast plate - blue	APM 1BL	20
Contrast plate - grey	APM 1G	20
20gm Bottle, super fast adhesive	SA 3	1
Locking device c/w cap	ALD 1	5
50mm Corner guard	ACGE 50	6
60mm Corner guard	ACGE 60	6

Aluminium Three Compartment Trunking

- Selected accessories available moulded or fabricated.
- All President aluminium trunking and fabricated accessories are powder coated traffic white (RAL 9016) & moulded accessories sprayed traffic white.

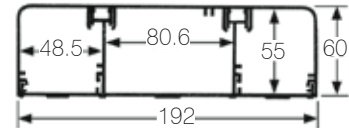


BSD 1W

Three Compartment Square Dado Trunking

Description	Cat. No.	Pack Quantity
Cat 6 & 7 compliant trunking c/w lids	BSD 1W	1 x 2m

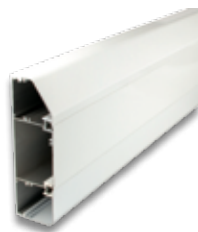
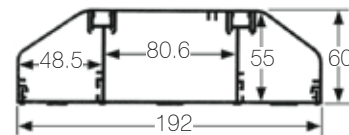
When used with Cat 6 & 7 compliant accessories.



BCD 2W

Three Compartment Chamfered Dado Trunking

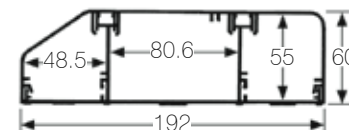
Description	Cat. No.	Pack Quantity
Trunking c/w lids	BCD 2W	1 x 2m



BSKT 3W

Three Compartment Skirting Trunking

Description	Cat. No.	Pack Quantity
Trunking c/w lids	BSKT 3W	1 x 2m



Aluminium Three Compartment Accessories



BCSK 3W

Description	Cat. No.	Coupler
		Pack Quantity
BSD 1W coupler (uPVC)	BCS 1W	2
BCD 2W coupler (uPVC)	BCC 2W	2
BSKT 3W coupler (uPVC)	BCSK 3W	2



BECS 1W

Description	Cat. No.	End Cap
		Pack Quantity
BSD 1W end cap (uPVC)	BECS 1W	2
BCD 2W end cap (uPVC)	BECC 2W	2
BSKT 3W right-hand end cap (uPVC)	BECSK-3RHW	2
BSKT 3W left-hand end cap (uPVC)	BECSK-3LHW	2



BISC6 1W

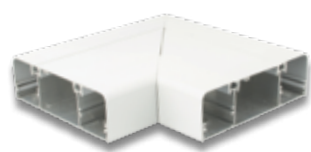
Description	Cat. No.	Internal Angle
		Pack Quantity
Cat 6 & 7 compliant BSD 1W internal angle (uPVC)	BISC6 1W	1
BSD 1W internal angle (uPVC)	BIS 1W	1
BSD 1W 45° internal angle (fabricated)	BIS 1/45W	1
BCD 2W internal angle (uPVC)	BIC 2W	1
BCD 2W 45° internal angle (fabricated)	BIC 2/45W	1
BSKT 3W internal angle (uPVC)	BISK 3W	1
BSKT 3W 45° internal angle (fabricated)	BISK 3/45W	1



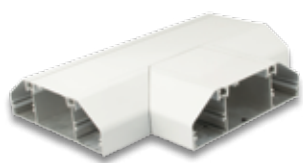
BEC 2W

Description	Cat. No.	External Angle
		Pack Quantity
BSD 1W external angle (uPVC)	BES 1W	1
BSD 1W 45° external angle (fabricated)	BES 1/45W	1
BCD 2W external angle (uPVC)	BEC 2W	1
BCD 2W 45° external angle (fabricated)	BEC 2/45W	1
BSKT 3W external angle (uPVC)	BESK 3W	1
BSKT 3W 45° external angle (fabricated)	BESK 3/45W	1

Aluminium Three Compartment Accessories



BFA 1W



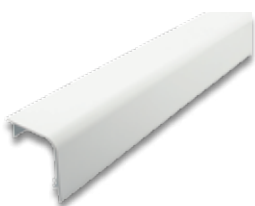
BFT 2W



ASB 2



ASP 1



BSQ 1W



ALD 1

Flat Angle

Description	Cat. No.	Pack Quantity
BSD 1W flat angle	BFA 1W	1
BCD 2W flat angle	BFA 2W	1
BSKT 3W upward flat angle	BFAU 3W	1
BSKT 3W downward flat angle	BFAD 3W	1

Flat Tee

Description	Cat. No.	Pack Quantity
BSD 1W flat tee	BFT 1W	1
BCD 2W flat tee	BFT 2W	1
BSKT 3W upward flat tee	BFTU 3W	1
BSKT 3W downward flat tee	BFTD 3W	1

Outlet Boxes

Description	Cat. No.	Pack Quantity
Outlet box, 1 gang, 32mm	ASB 1	10
Outlet box, 1 gang, 32mm, 4 pillar	ASB 1V	10
Outlet box, 2 gang, 32mm	ASB 2	10
Outlet box, 3 gang, 32mm	ASB 3	5
Outlet box, 1 gang, 40mm	ASBC6 1	10
Outlet box, 2 gang, 40mm	ASBC6 2	10

Outlet Plates

Description	Cat. No.	Pack Quantity
Outlet plate, 1 gang	ASP 1	15
Outlet plate, 2 gang	ASP 2	15

Separate Profiles

Description	Cat. No.	Pack Quantity
Base unit	BB 1	2 x 2m
Square lid	BSQ 1W	4 x 2m
Chamfered lid	BCH 1W	4 x 2m
Centre lid	BCL 1W	4 x 2m

Spares

Description	Cat. No.	Pack Quantity
Locking device with cap	ALD 1	100
Earth strap	BBS 1	10
Earth lead	BBS 2	10



Product Application

Healthcare Sector

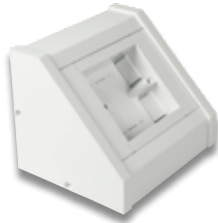
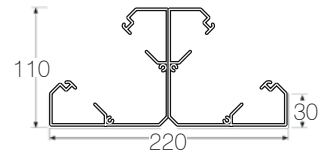
Gas & Air Outlets

Gas & air outlets and nurse call points can be a challenge to install after a project has been completed.

Centaur can produce vertical or horizontal bedhead panels in any ward and laboratory areas and make them a breeze to install from their bespoke fabrication department, along with a complete Cat 6 cable management system to any general office areas.

uPVC & Aluminium Bench Units

- Available plain, populated or pre-wired, President Bench Units offer a sleek and sophisticated look to a variety of applications, such as; laboratories, classrooms, offices etc.



ABU 1

uPVC Bench Units

Description	Cat. No.	Pack Quantity
1 Gang	ABU 1	1
2 Gang	ABU 2	1
3 Gang	ABU 3	1
1 + 2 Gang	ABU 1/2	1
2 + 2 Gang	ABU 2/2	1
1 + 1 + 2 Gang	ABU 1/1/2	1



ABUD 1/2

uPVC Dual Bench Units

Description	Cat. No.	Pack Quantity
1 Gang x 2	ABUD 1	1
2 Gang x 2	ABUD 2	1
1 + 2 Gang x 2	ABUD 1/2	1



DBU 2

Aluminium Bench Units

Description	Cat. No.	Pack Quantity
1 Gang	DBU 1	1
2 Gang	DBU 2	1
3 Gang	DBU 3	1
1 + 2 Gang	DBU 1/2	1
2 + 2 Gang	DBU 2/2	1
1 + 1 + 2 Gang	DBU 1/1/2	1



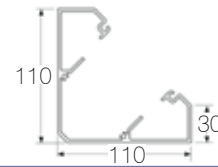
DBUD 1

Aluminium Dual Bench Units

Description	Cat. No.	Pack Quantity
1 Gang x 2	DBUD 1	1
2 Gang x 2	DBUD 2	1
1 + 2 Gang x 2	DBUD 1/2	1

uPVC Bench Trunking

- Available in aluminium and uPVC with easy to install clip-in dividers.
- Two or three completely segregated compartments for power and data cables.



ABT 1

uPVC Bench Trunking

Description	Cat. No.	Pack Quantity
Trunking c/w lid	ABT 1	2 x 3m
40mm Clip-in divider	DIV 40	10 x 3m



ABC

Coupler

Description	Cat. No.	Pack Quantity
Coupler	ABC	2

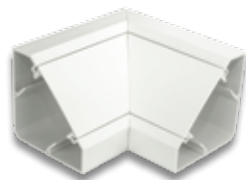


ABEC 1*

End Cap

Description	Cat. No.	Pack Quantity
End cap	ABEC 1*	2
Dual end cap	ABEC 2**	2
Right-hand end cap	ABEC 1RH	2
Left-hand end cap	ABEC 1LH	2

* - For use where a work surface and wall meet.
 ** - For use with back to back bench trunking.



ABI 1

Internal & External Angles

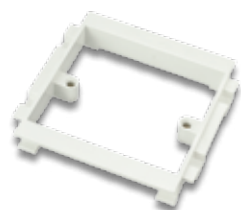
Description	Cat. No.	Pack Quantity
Internal angle (fabricated)	ABI 1	1
External angle (fabricated)	ABE 1	1



ASB 2

Outlet Boxes

Description	Cat. No.	Pack Quantity
Outlet box, 1 gang, 32mm	ASB 1	10
Outlet box, 2 gang, 32mm	ASB 2	10
Outlet box, 3 gang, 32mm	ASB 3	5



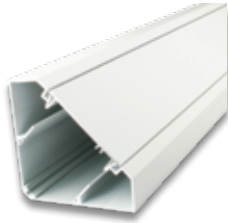
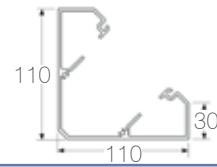
ASP 1

Outlet Plates

Description	Cat. No.	Pack Quantity
Outlet plate, 1 gang	ASP 1	15
Outlet plate, 2 gang	ASP 2	15

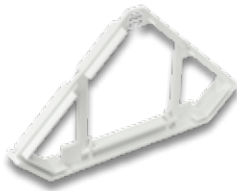
Aluminium Bench Trunking

- Selected accessories available moulded or fabricated.
- All President aluminium bench trunking and fabricated accessories are powder coated traffic white (RAL 9016) & moulded accessories sprayed traffic white.



DBT 1/2M

Aluminium Bench Trunking		
Description	Cat. No.	Pack Quantity
Aluminium trunking c/w lid	DBT 1/2M	2 x 2m
Aluminium trunking c/w lid	DBT 1/3M	1 x 3m
Aluminium base c/w uPVC lid	DBT 2/2M	2 x 2m
Aluminium base c/w uPVC lid	DBT 2/3M	1 x 3m
uPVC 40mm clip-in divider	DIV 40	10 x 3m



ABC TW

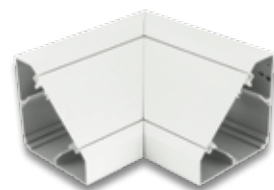
Coupler		
Description	Cat. No.	Pack Quantity
Coupler (uPVC)	ABC TW	2



ABEC 1TW*

End Cap		
Description	Cat. No.	Pack Quantity
End cap (uPVC)	ABEC 1TW*	2
Dual end cap (uPVC)	ABEC 2TW**	2
Right-hand end cap (uPVC)	ABEC 1RH TW	2
Left-hand end cap (uPVC)	ABEC 1LH TW	2

* - For use where a work surface and wall meet.
 ** - For use with back to back bench trunking.



DBI 1

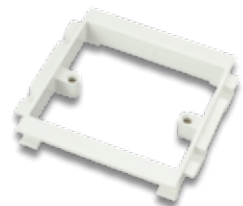
Internal & External Angles		
Description	Cat. No.	Pack Quantity
Internal angle (fabricated)	DBI 1	1
Internal angle c/w uPVC lid (fabricated)	DBI 2	1
External angle (fabricated)	DBE 1	1
External angle c/w uPVC lid (fabricated)	DBE 2	1

Aluminium Bench Trunking Accessories



ASB 2

Outlet Boxes		
Description	Cat. No.	Pack Quantity
Outlet box, 1 gang, 32mm	ASB 1	10
Outlet box, 2 gang, 32mm	ASB 2	10
Outlet box, 3 gang, 32mm	ASB 3	5



ASP 1

Outlet Plates		
Description	Cat. No.	Pack Quantity
Outlet plate, 1 gang	ASP 1	15
Outlet plate, 2 gang	ASP 2	15



BBS 2

Spares		
Description	Cat. No.	Pack Quantity
Earth strap	BBS 1	10
Earth lead	BBS 2	10



Product Application

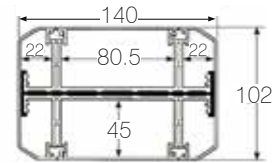
Education Sector
 Bench Trunking

Bench trunking is an ideal solution for laboratories, schools, colleges and universities. Centaur are able to integrate both power socket outlets and gas outlets into bench trunking helping to keep trailing pipes/cables clear from the work space. Dual-sided options are also available in the form of both trunking and bench units, they're available as standard, pre-wired/populated or bespoke.

President Bench Trunking

uPVC Power Pole & Post Systems

- Double-sided for a larger distribution, President uPVC Power Poles & Posts are ideal for supplying commercial applications, large power, data and multimedia demand through one location.



Power Pole & Post

Description	Cat. No.	Pack Quantity
Power pole 3.6m length	AP 1	1
Power pole 3m length	AP 2	1
Power post, 680mm length	AP 680	1

Each Power Pole Pack Comprises

Description	
Pole body*	1 x 3.6m
Side lids*	2 x 3.6m
Centre lids*	2 x 3.6m
Fixing bracket	1
Base foot (metal)	1
Base moulding	1

* - 3m lengths for AP 2.



AP 680
Accessories supplied separately.

Each Power Post Pack Comprises

Description	
Post Body	1 x 680mm
Side lids	2 x 680mm
Centre lids	2 x 680mm
Base foot (metal)	1
Base moulding	1
Top cap	1



ASB 1V

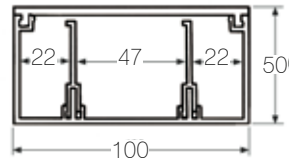
Accessories

Description	Cat. No.	Pack Quantity
Outlet box, 1 gang, 32mm, 4 pillars	ASB 1V	10
Top cover. For suspended & solid ceilings	APF 1	1
Tee used for suspended and solid ceilings, and floors. Compatible with President Trunking ACD 4	APT 1	1
Top slide for slab fixing (standard)	ATS 1	1
Top slide 1m extension for slab fixing	ATS 1500	1

For coloured lid options or non standard heights contact Centaur sales office.

Aluminium Power Pole Systems

- Single-sided power pole offering distribution in applications where it may be subject to mechanical stress.
- Aluminium power poles are powder coated traffic white (RAL 9016) & selected moulded accessories sprayed traffic white.



AP 3W

Single Sided Power Pole

Description	Cat. No.	Pack Quantity
Single sided power pole 3m length	AP 3W	1

Each Power Pole Pack Comprises

Description	
Pole body	1 x 3m
Pole lid	1 x 3m
1 Gang outlet box	6
Top cover	1
Fixing bracket	1
Base foot (metal)	1
Base moulding	1



CSPB 1W

Outlet box

Description	Cat. No.	Pack Quantity
1 Gang outlet box, 32mm, 4 pillars	CSPB 1W	10



CSP 1W

Outlet Plate

Description	Cat. No.	Pack Quantity
1 Gang outlet plate, 4 pillars	CSP 1W	10

Campus Features & Benefits

- A cost effective trunking system in uPVC or Aluminium for use in schools, college halls of residence, hospitals, offices, government and local authority buildings or wherever an economical cable management system is required.

Campus Multi Compartment Trunking

Design Features

- uPVC Campus available in 3 sizes:
100mm x 30mm
100mm x 50mm (Aluminium option available)
200mm x 50mm
- Clip-on divider for 50mm deep trunking.
- Self adhesive divider for 30mm deep trunking.
- Easy to install with a range of moulded accessories providing clean, uncluttered lines.
- 1 & 2 gang outlet boxes and plates.
- Manufactured to comply with BS4678: Part 4 Heavy Duty Classification.
- Standard colour White

1 Outlet boxes have square knock out in base to allow for deeper accessories.

2 Radiused internal angle for data cables.

3 Two module MCB/RCD housing with DIN rail fitted option available.

4 Clip-on one piece fittings for quick and easy installation.

5 External corner guards for data cable protection.

6 Moulded fittings are designed to fit close to architectural features, such as architrave or skirting.



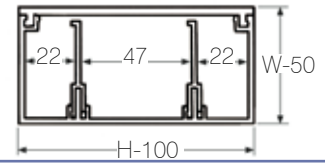
Campus Features & Benefits

- The Centaur Campus dado trunking systems are an easy to install method of cable management, having clean, uncluttered lines for aesthetic appeal and the flexibility to fit additional accessories and outlets when required.



uPVC Dado Trunking & Accessories

- Practical in its design, Campus Dado Trunking offers a cost effective solution to large cable demands.
- The option of clip-on and fabricated accessories allows both a neat and efficient installation.
- Cat 6 & 7 options available.



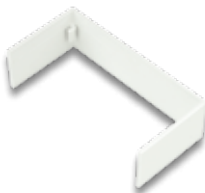
CMXT 42W

Description	Cat. No.	H (mm)	W (mm)	Trunking
				Pack Quantity
Trunking c/w lids	CMXT 41W	100	30	2 x 3m
Trunking c/w lids	CMXT 42W	100	50	2 x 3m
Trunking c/w lids	DMXT 42W	200	50	2 x 3m



DIV 42W

Description	Cat. No.	Divider	
		Pack Quantity	
30mm Self adhesive divider	DIV 41W	10 x 3m	
50mm Clip-in divider	DIV 42W	10 x 3m	



CXC 42W

Description	Cat. No.	H (mm)	W (mm)	Coupler
				Pack Quantity
External coupler	CXC 41W	100	30	2
External coupler	CXC 42W	100	50	2
External coupler	DXC 42W	200	50	2
Internal coupler	CIC 41W	100	30	1
Internal coupler	CIC 42W	100	50	1



CES 42W

Description	Cat. No.	H (mm)	W (mm)	End Cap
				Pack Quantity
End cap	CES 41W	100	30	15
End cap	CES 42W	100	50	15
End cap	DES 42W	200	50	15



CIAM 42W

Description	Cat. No.	H (mm)	W (mm)	Internal Angle
				Pack Quantity
Internal angle	CIAM 41W	100	30	1
Cat 6 & 7 compliant internal angle	CIAM 42W	100	50	1
Cat 6 & 7 compliant internal angle	DIAM 42W	200	50	1

uPVC Dado Accessories



CXAM 42W

Description	Cat. No.	H (mm)	W (mm)	External Angle	
				Pack Quantity	
External angle	CXAM 41W	100	30	1	
External angle	CXAM 42W	100	50	1	
External angle	DXAM 42W	200	50	1	



CFAM 42W

Description	Cat. No.	H (mm)	W (mm)	Flat Angle	
				Pack Quantity	
Flat angle	CFAM 41W	100	30	1	
Flat angle	CFAM 42W	100	50	1	
Flat angle	DFAM 42W	200	50	1	



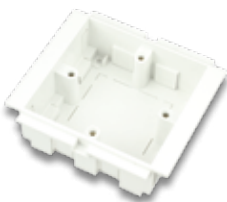
CFTM 42W

Description	Cat. No.	H (mm)	W (mm)	Flat Tee	
				Pack Quantity	
Flat tee	CFTM 41W	100	30	1	
Flat tee	CFTM 42W	100	50	1	
Flat tee	DFTM 42W	200	50	1	



CRT 42W

Description	Cat. No.	Cable Retainer	
		Pack Quantity	
Cable retainer	CRT 42W	6	



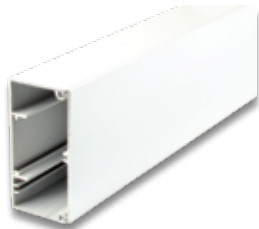
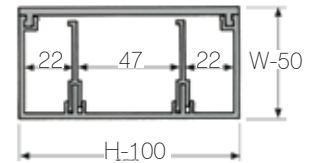
CSPB 1W

Description	Cat. No.	Spares	
		Pack Quantity	
Outlet box, 1 gang, 32mm, 4 pillars	CSPB 1W*	10	
Outlet box, 2 gang, 32mm	CSPB 2W*	10	
Outlet plate, 1 gang	CSP 1W	15	
Outlet plate, 2 gang	CSP 2W	15	
15mm Outlet box spacer	CS 42W	6	
External corner guard	CG 42	10	

* - Suitable for Campus Dado Trunking profiles CMXT 42W & DMXT 42W.

Aluminium Dado Trunking & Accessories

- Selected accessories available moulded or fabricated.
- All Campus aluminium trunking & fabricated accessories are powder coated traffic white (RAL 9016) & moulded accessories sprayed traffic white.
- Cat 6 & 7 options available.



BMXT 42W

Description	Cat. No.	H (mm)	W (mm)	Trunking Pack Quantity
Trunking c/w lids	BMXT 42W	100	50	2 x 3m
50mm Clip-in divider	DIV 42/S	-	-	10 x 3m



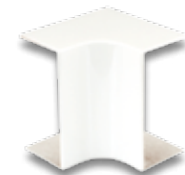
BXC 42W

Description	Cat. No.	H (mm)	W (mm)	Coupler Pack Quantity
Coupler (uPVC)	BXC 42W	100	50	2



BES 42W

Description	Cat. No.	H (mm)	W (mm)	End Cap Pack Quantity
End cap (uPVC)	BES 42W	100	50	15



BIAM 42W

Description	Cat. No.	H (mm)	W (mm)	Internal Angle Pack Quantity
Cat 6 & 7 compliant internal angle (uPVC)	BIAM 42W	100	50	1



BXAM 42W

Description	Cat. No.	H (mm)	W (mm)	External Angle Pack Quantity
External angle (uPVC)	BXAM 42W	100	50	1



BFAM 42W

Description	Cat. No.	H (mm)	W (mm)	Flat Angle Pack Quantity
Flat angle (uPVC)	BFAM 42W	100	50	1
Flat angle (fabricated)	BFAT 42W	100	50	1

Aluminium Dado Accessories



BFTM 42W

Description	Cat. No.	H (mm)	W (mm)	Flat Tee
				Pack Quantity
Flat tee (uPVC)	BFTM 42W	100	50	1
Flat tee (fabricated)	BFTT 42W	100	50	1



CSPB 1W

Description	Cat. No.	Outlet Boxes & Plates
		Pack Quantity
Outlet box, 1 gang, 32mm, 4 pillars	CSPB 1W	10
Outlet box, 2 gang, 32mm	CSPB 2W	10
Outlet plate, 1 gang	CSP 1W	15
Outlet plate, 2 gang	CSP 2W	15
15mm Outlet box spacer	CS 42W	6



CRT 42W

Description	Cat. No.	Spares
		Pack Quantity
100 x 50mm Cable retainer	CRT 42W	6
Earth strap	BBS 1	10
Earth lead	BBS 2	10
External corner guard	CG 42	10



Product Application

Accommodation

Illuminated Trunking

An LED illuminated offering is made to order for a variety of applications such as hotels and student accommodation and can be populated/pre-wired upon request.

Available with 3 compartments or more, and can incorporate both power and multimedia accessories, with a range of different colours and finishes available.

Campus Range

Kensington Features & Benefits

- Unobtrusive skirting, architrave/small dado cable management system.
- Ideal for installation in hotels, sheltered housing, nursing homes, and portable buildings where inconspicuous cabling is required to blend into the existing surroundings.
- The Centaur Kensington uPVC Range comprises of one or two compartments.

Kensington

Multi Compartment Trunking

Design Features:

- Smooth lines for cleaning.
- Architrave profile can be run as a small dado system.
- Ideal for solid floor buildings.
- Outlet boxes for electrical accessories.

- 1 Single or twin compartments for cable segregation (removable divider).
- 2 Fittings overlap for more cutting tolerance, facilitating ease of installation.
- 3 Door frame kit available for ease of ordering and reduction of waste.



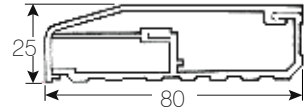
Kensington Features & Benefits

- A door kit is available with pre-cut lengths of architrave and accessories to help with ease of ordering, keeping installation time and wastage to a minimum.



Skirting Trunking

- The Kensington skirting range offers a practical solution to cable management in domestic and commercial environments as the lids are easily separated from the base, allowing cables to be removed and added.



CKD

Skirting Trunking		
Description	Cat. No.	Pack Quantity
2 Compartment	CKD	15m
1 Compartment	CKD 1	15m



CKC

Coupler		
Description	Cat. No.	Pack Quantity
Coupler	CKC	10



CKE-RH

End Cap		
Description	Cat. No.	Pack Quantity
Right-hand end cap	CKE-RH	5
Left-hand end cap	CKE-LH	5



CKI

Internal & External Angle		
Description	Cat. No.	Pack Quantity
Internal angle	CKI	10
External angle	CKX	10



CKA-RH

Skirting To Architrave Adaptor		
Description	Cat. No.	Pack Quantity
Right-hand adaptor	CKA-RH	2
Left-hand adaptor	CKA-LH	2

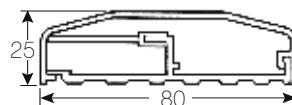


CKS 1

Spares		
Description	Cat. No.	Pack Quantity
CMT 2 adaptor	CKMT 2	2
Cable retainer	CKR	10
Outlet box, 1 gang	CKS 1	5
Outlet box, 2 gang	CKS 2	5

Architrave Trunking

- The Kensington architrave range provides an efficient method to cabling around door ways, eliminating the need to install under floor cable management.
- This range can also be adapted to use as a dado trunking.



CDA

Architrave Trunking		
Description	Cat. No.	Pack Quantity
2 Compartment	CDA	15m
1 Compartment	CDA 1	15m



CDC

Coupler		
Description	Cat. No.	Pack Quantity
Coupler	CDC	10



CDE

End Cap		
Description	Cat. No.	Pack Quantity
End cap	CDE	5



CDI

Internal & External Angle		
Description	Cat. No.	Pack Quantity
Internal angle	CDI	10
External angle	CDX	10



CDFA

Flat Angle & Flat Tee		
Description	Cat. No.	Pack Quantity
Flat angle	CDFA	2
Flat tee	CDFT	2

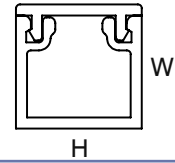


CDS 1

Spares		
Description	Cat. No.	Pack Quantity
CMT 2 adaptor	CDMT 2	2
Cable retainer	CDR	10
Outlet box, 1 gang	CDS 1	5
Outlet box, 2 gang	CDS 2	5

Maxi Trunking & Accessories

- Boasting a unique anti-tamper locking lid, Centaur Maxi Trunking provides a clean line to the exterior appearance.
- Dividers available separately allowing the option for multiple compartments.



CMXT 22W

Description	Cat. No.	H (mm)	W (mm)	Trunking Pack Quantity
Trunking c/w lid	CMXT 22W	50	50	4 x 3m
Trunking c/w lid	CMXT 32W	75	50	4 x 3m
Trunking c/w lid	CMXT 33W	75	75	4 x 3m
Trunking c/w lid	CMXT 44W	100	100	2 x 3m

Additional colours available on request.



DIV 22W

Description	Cat. No.	Pack Quantity
Self-adhesive divider	DIV 22W	10 x 3m
Self-adhesive divider	DIV 33W	10 x 3m
Self-adhesive divider	DIV 44W	10 x 3m



CIC 22W

Description	Cat. No.	H (mm)	W (mm)	Internal Coupler Pack Quantity
Internal coupler	CIC 22W	50	50	1
Internal coupler	CIC 32W	75	50	1
Internal coupler	CIC 33W	75	75	1
Internal coupler	CIC 44W	100	100	1

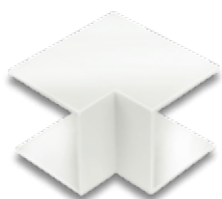


CES 22W

Description	Cat. No.	H (mm)	W (mm)	End Cap Pack Quantity
End cap	CES 22W	50	50	30
End cap	CES 32W	75	50	20
End cap	CES 33W	75	75	15
End cap	CES 44W	100	100	15

Maxi Trunking

- Standard colour white, RAL/BS colours available on request are subject to order quantity.
- Specially fabricated fittings can be made to order.



CIAM 22W

Description	Cat. No.	H (mm)	W (mm)	Internal Angle	
				Pack	Quantity
Internal angle (moulded)	CIAM 22W	50	50	2	
Internal angle (fabricated)	CIAT 22W	50	50	1	
Internal angle (fabricated)	CIAT 32W	75	50	1	
Internal angle (fabricated)	CIAT 33W	75	75	1	
Internal angle (fabricated)	CIAT 44W	100	100	1	



CXAM 22W

Description	Cat. No.	H (mm)	W (mm)	External Angle	
				Pack	Quantity
External angle (moulded)	CXAM 22W	50	50	2	
External angle (fabricated)	CXAT 22W	50	50	1	
External angle (fabricated)	CXAT 32W	75	50	1	
External angle (fabricated)	CXAT 33W	75	75	1	
External angle (fabricated)	CXAT 44W	100	100	1	



CFAM 22W

Description	Cat. No.	H (mm)	W (mm)	Flat Angle	
				Pack	Quantity
Flat angle (moulded)	CFAM 22W	50	50	2	
Flat angle (fabricated)	CFAT 22W	50	50	1	
Flat angle (fabricated)	CFAT 32W	75	50	1	
Flat angle (fabricated)	CFAT 33W	75	75	1	
Flat angle (fabricated)	CFAT 44W	100	100	1	

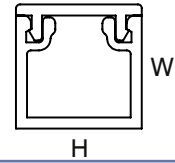


CFTM 22W

Description	Cat. No.	H (mm)	W (mm)	Flat Tee	
				Pack	Quantity
Flat tee (moulded)	CFTM 22W	50	50	2	
Flat tee (fabricated)	CFTT 22W	50	50	1	
Flat tee (fabricated)	CFTT 32W	75	50	1	
Flat tee (fabricated)	CFTT 33W	75	75	1	
Flat tee (fabricated)	CFTT 44W	100	100	1	

Mini Trunking

- Adding extra strength to the integral cross section, the specially designed tamper proof lid eliminates accidental removal.
- Self adhesive dividers in selected size enables cable segregation.



CMT 1W

Description	Cat. No.	H (mm)	W (mm)	Trunking Pack Quantity
Trunking c/w lid	CMT 0W	16	10	40 x 3m
Trunking c/w lid	CMT 1W	16	16	20 x 3m
Trunking c/w lid	CMT 2W	25	16	20 x 3m
Trunking c/w lid	CMT 3W	38	16	15 x 3m
Trunking twin compartment c/w lid	CMT 3W T/C	38	16	15 x 3m
Trunking c/w lid	CMT 4W	38	25	15 x 3m
Trunking c/w lid	CMT 5W	50	25	12 x 3m
Trunking twin compartment c/w lid	CMT 5W T/C	50	25	12 x 3m

Additional colours available on request.



CMT 1SA

Description	Cat. No.	H (mm)	W (mm)	Self Adhesive Trunking Pack Quantity
Trunking c/w lid (self adhesive)	CMT 0SA	16	10	40 x 3m
Trunking c/w lid (self adhesive)	CMT 1SA	16	16	20 x 3m
Trunking c/w lid (self adhesive)	CMT 2SA	25	16	20 x 3m
Trunking c/w lid (self adhesive)	CMT 3SA	38	16	15 x 3m
Trunking c/w lid (self adhesive)	CMT 4SA	38	25	15 x 3m
Trunking c/w lid (self adhesive)	CMT 5SA	50	25	12 x 3m

Additional colours available on request.



DIV 2W

Description	Cat. No.	Self Adhesive Divider Pack Quantity
Self adhesive divider	DIV 2W	10 x 3m
Self adhesive divider	DIV 3W	10 x 3m
Self adhesive divider	DIV 4W	10 x 3m
Self adhesive divider	DIV 5W	10 x 3m
Divider (metal)	DIV 5 METAL	10 x 3m

Mini Trunking Accessories



MEC 1W

Description	Cat. No.	H (mm)	W (mm)	End Cap
				Pack Quantity
End cap	MEC 0W	16	10	100
End cap	MEC 1W	16	16	100
End cap	MEC 2W	25	16	100
End cap	MEC 3W	38	16	40
End cap	MEC 4W	38	25	30
End cap	MEC 5W	50	25	20



MC 1W

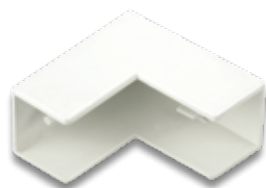
Description	Cat. No.	H (mm)	W (mm)	Coupler
				Pack Quantity
Coupler	MC 0W	16	10	60
Coupler	MC 1W	16	16	60
Coupler	MC 2W	25	16	40
Coupler	MC 3W	38	16	30
Coupler	MC 4W	38	25	25
Coupler	MC 5W	50	25	10



MIB 1W

Description	Cat. No.	H (mm)	W (mm)	Internal Angle
				Pack Quantity
Internal angle	MIB 0W	16	10	50
Internal angle	MIB 1W	16	16	50
Internal angle	MIB 2W	25	16	40
Internal angle	MIB 3W	38	16	40
Internal angle	MIB 4W	38	25	25
Internal angle	MIB 5W	50	25	2

Mini Trunking Accessories



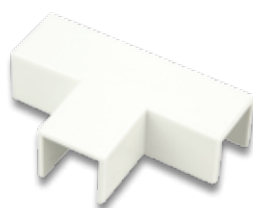
MEB 1W

Description	Cat. No.	H (mm)	W (mm)	External Angle	
				Pack Quantity	
External angle	MEB 0W	16	10	50	
External angle	MEB 1W	16	16	50	
External angle	MEB 2W	25	16	40	
External angle	MEB 3W	38	16	40	
External angle	MEB 4W	38	25	25	
External angle	MEB 5W	50	25	2	



MFB 1W

Description	Cat. No.	H (mm)	W (mm)	Flat Angle	
				Pack Quantity	
Flat angle	MFB 0W	16	10	60	
Flat angle	MFB 1W	16	16	60	
Flat angle	MFB 2W	25	16	40	
Flat angle	MFB 3W	38	16	40	
Flat angle	MFB 4W	38	25	25	
Flat angle	MFB 5W	50	25	2	



MT 1-1W

Description	Cat. No.	H (mm)	W (mm)	Equal Tee	
				Pack Quantity	
Equal tee	MT 0-0W	16	10	50	
Equal tee	MT 1-1W	16	16	50	
Equal tee	MT 2-2W	25	16	30	
Equal tee	MT 3-3W	38	16	25	
Equal tee	MT 4-4W	38	25	20	
Equal tee	MT 5-5W	50	25	2	



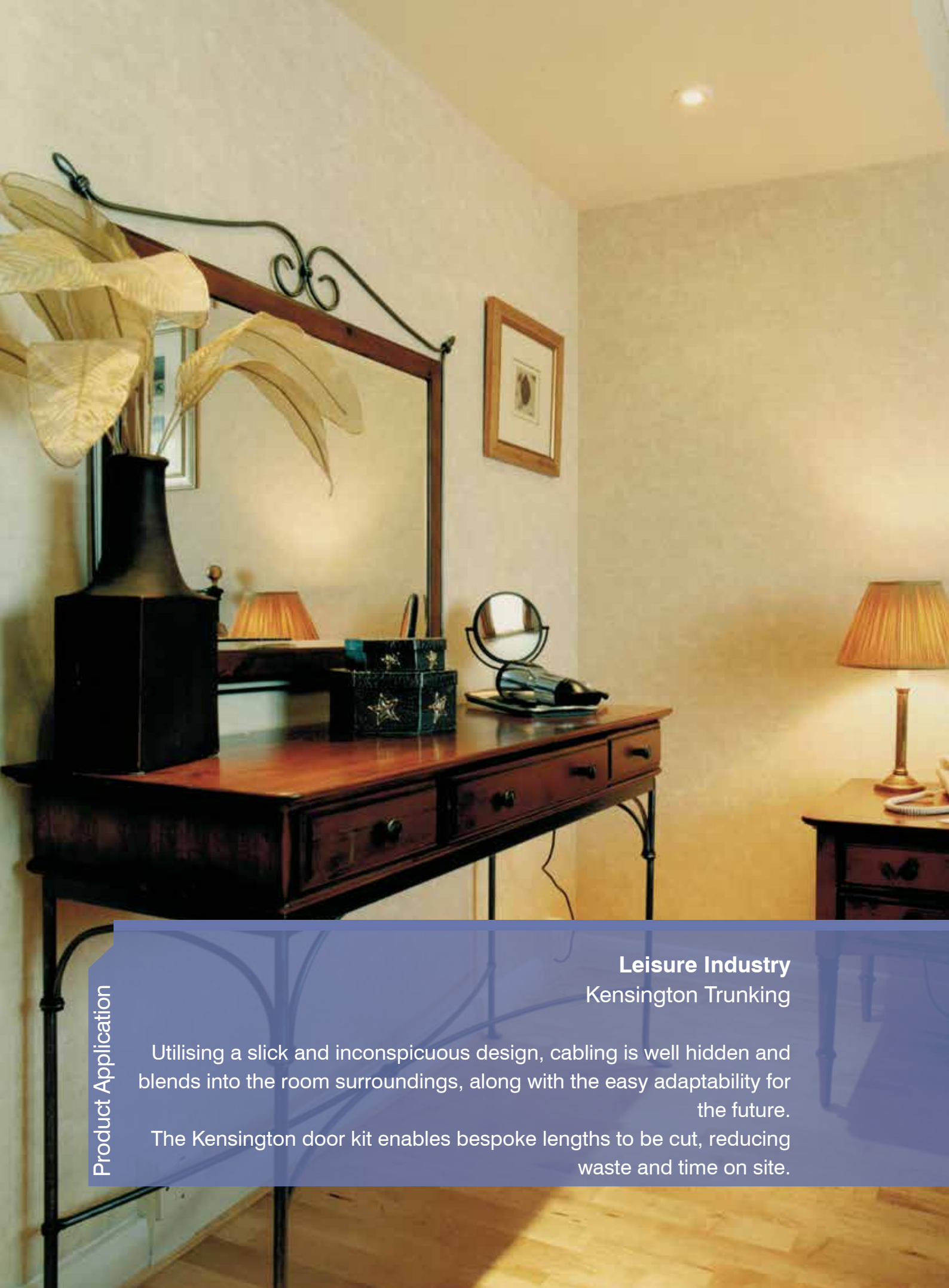
MCR 2W

Description	Cat. No.	Ceiling Rose Adaptor	
		Pack Quantity	
Ceiling rose adaptor CMT 2/CMT 1	MCR 2W	30	



MA 1W

Description	Cat. No.	Surface Box Adaptor	
		Pack Quantity	
To fit CMT 1 (centre)	MA 1W	50	
To fit CMT 2 (centre)	MA 2W	50	



Product Application

Leisure Industry Kensington Trunking

Utilising a slick and inconspicuous design, cabling is well hidden and blends into the room surroundings, along with the easy adaptability for the future.

The Kensington door kit enables bespoke lengths to be cut, reducing waste and time on site.

Red 202 Mini Trunking

- The Red 202 Mini Trunking range is ideal for use on installations such as computer and power supply switches, emergency stops, panic alarms, smoke detectors and sounders. Red 202 surface boxes

have mini trunking opening ready prepared and are complete with earth terminals. Red 202 provides immediate identification of critical safety and alarm circuits.



CMT 2R

Description	Cat. No.	H (mm)	W (mm)	Trunking Pack Quantity
Trunking c/w lid	CMT 2R	16	25	60 x 3m



MEC 2R

Description	Cat. No.	H (mm)	W (mm)	End Cap Pack Quantity
End cap	MEC 2R	16	25	100



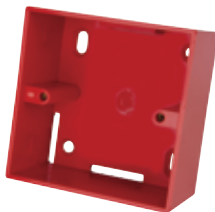
MC 2R

Description	Cat. No.	H (mm)	W (mm)	Coupler Pack Quantity
Coupler	MC 2R	16	25	40



MFB 2R

Description	Cat. No.	H (mm)	W (mm)	Bends & Tee Pack Quantity
Internal bend	MIB 2R	16	25	40
External bend	MEB 2R	16	25	40
Flat bend	MFB 2R	16	25	40
Equal tee	MT 2-2R	16	25	40



SB 201R

Description	Cat. No.	D (mm)	Terminal Boxes & Lid Pack Quantity
Square terminal box (1 outlet)	SB 201R	44	10
Square terminal box (2 outlet)	SB 202R	44	10
Square lid, 1 gang	FL 1R	-	20
Square lid, 2 gang	FL 2R	-	10



CDLBR 5

Description	Cat. No.	D (mm)	Circular Dry Ling Box Pack Quantity
Square terminal box (1 outlet) Double back entry - aperture 63.5mm Board thickness - 2mm - 20mm Fixing centres - 50.8mm	CDLBR 5	36mm	10

Red 200 Terminal & Outlet Boxes

- The Red 200 range is designed as a combination of boxes plus 252 glands ready fitted for ease of installation, using conventional or fire performance cables. Red 200 provides immediate identification of critical fire safety and alarm circuits.

Terminal & Outlet Boxes



CB 2R



CB 7R

Description	Cat. No.	Pack Quantity
20mm Back outlet box	CB 1R	10
20mm Terminal box	CB 2R	10
20mm Through outlet box	CB 3R	10
20mm Angle box	CB 4R	10
20mm T box	CB 5R	10
20mm 4 Way box	CB 6R	10
20mm U box	CB 7R	10
20mm Y box	CB 8R	10
20mm H box	CB 9R	10
Circular lid	CCL 1R	100
Shroud	RS 200	10
Steel cheesehead screw	M4 x 12mm	100

All terminal boxes are complete with glands and earth terminal
 All Red 200 products are also available in white.



Product Application

Group Study Areas

Centaur's sturdy and aesthetic power poles are widely specified throughout a variety of applications. The six compartment system provides generous cabling capacity for power, data and voice accessories from a central location. The ability to connect to ACD 4 President trunking enables multiple power poles to be connected via a tee accessory, which is especially useful when installing onto solid ceilings or solid flooring. If cabling from floor to ceiling or vice versa, the power pole flange enables a smooth and sleek look to entering suspended ceilings.

Red Range

High Impact Conduit

- Manufactured in accordance to: BS 4607 Part 5; BSEN 50086-2-1 (1996); BSEN 61386-21 (2004) formerly BS 6099.
- Tested regularly to high quality standards, the Centaur super high impact conduit provides an easy and secure method of cable management.
- Heavy gauge and light gauge options are available to suit a variety of applications.



HG 20W

Super High Impact Conduit, Heavy Gauge

Size	Nom. Wall Thickness	Cat. No.	Pack Quantity
20mm	1.8mm	HG 20*	30 x 3m
25mm	1.9mm	HG 25*	30 x 3m
32mm	2.5mm	HG 32	10 x 3m
38mm	2.5mm	HG 38	10 x 3m
50mm	3.2mm	HG 50	10 x 3m

* - Selected conduit & accessories also available in red.



LG 20W

Super High Impact Conduit, Light Gauge

Size	Nom. Wall Thickness	Cat. No.	Pack Quantity
20mm	1.2mm	LG 20	30 x 3m
25mm	1.5mm	LG 25	30 x 3m
32mm	1.5mm	LG 32	10 x 3m
38mm	1.5mm	LG 38	10 x 3m
50mm	1.8mm	LG 50	10 x 3m



OCO 1500W

High Impact Oval Conduit

Size	Nom. Wall Thickness	Cat. No.	Pack Quantity
13mm	0.8mm	OCO 500W	50 x 3m
16mm	0.8mm	OCO 625W	50 x 3m
20mm	0.8mm	OCO 750W	50 x 3m
25mm	1.0mm	OCO 1000W	50 x 3m
32mm	1.0mm	OCO 1250W	20 x 3m
38mm	1.3mm	OCO 1500W	20 x 3m

Manufactured to comply with BS 4607 Part 5.



CH 150W

High Impact Channels

Size	Nom. Wall Thickness	Cat. No.	Pack Quantity
13mm	7.4mm	CH 050W	50 x 2m
25mm	8.0mm	CH 100W	50 x 2m
38mm	8.5mm	CH 150W	50 x 2m

Conduit & accessories available as standard black or white.

Flexible Conduit & Fixings Accessories



CFP 3W

Description	Cat. No.	Flexible Conduit	
		Pack	Quantity
20mm Flexible conduit	CFP 2*	50m	
25mm Flexible conduit	CFP 3*	50m	
20mm Ø, 10m Flexible conduit c/w 10 x glands. White (uPVC)	CFP-20W-10M-CP	-	
25mm Ø, 10m Flexible conduit c/w 10 x glands. White (uPVC)	CFP-25W-10M-CP	-	
20mm Ø, 10m Flexible conduit c/w 10 x glands. Black (polypropylene)	CFP-20B-10M-CP	-	
25mm Ø, 10m Flexible conduit c/w 10 x glands. Black (polypropylene)	CFP-25B-10M-CP	-	

* - Flame retardant. Available in black & white.



CAF 2W

Description	Cat. No.	Flexible Conduit Adaptor	
		Pack	Quantity
20mm Flexible conduit adaptor	CAF 2	50	
25mm Flexible conduit adaptor	CAF 3	50	



CEC 20W

Description	Cat. No.	Expansion Coupler	
		Pack	Quantity
20mm Expansion coupler	CEC 20	50	
25mm Expansion coupler	CEC 25	25	

Expansion couplers should be installed when a run exceeds 6m or on lengths adjacent to two fixed points.



CSC 50W

Description	Cat. No.	Conduit Coupler	
		Pack	Quantity
20mm Round conduit coupler	CSC 20	100	
25mm Round conduit coupler	CSC 25	50	
32mm Round conduit coupler	CSC 32	25	
38mm Round conduit coupler	CSC 38	15	
50mm Round conduit coupler	CSC 50	10	



CMA 38W

Description	Cat. No.	Male Adaptor	
		Pack	Quantity
20mm Male adaptor	CMA 20	100	
25mm Male adaptor	CMA 25	70	
32mm Male adaptor	CMA 32	25	
38mm Male adaptor	CMA 38	25	
50mm Male adaptor	CMA 50	10	

Conduit & accessories available as standard black or white.

Conduit Fixing Accessories



CLR 20W



CFA 50W



CMB 32W



93W



SBS 32W



SS 32W
Screws not included.

Screwed Lockring

Description	Cat. No.	Pack Quantity
20mm Screwed locking	CLR 20	100
25mm Screwed locking	CLR 25	100
32mm Screwed locking	CLR 32	50
38mm Screwed locking	CLR 38	25
50mm Screwed locking	CLR 50	25

Female Adaptor

Description	Cat. No.	Pack Quantity
20mm Female adaptor	CFA 20	100
25mm Female adaptor	CFA 25	50
32mm Female adaptor	CFA 32	25
38mm Female adaptor	CFA 38	25
50mm Female adaptor	CFA 50	10

Screwed Male Bush

Description	Cat. No.	Pack Quantity
20mm Screwed male bush	CMB 20	100
25mm Screwed male bush	CMB 25	100
32mm Screwed male bush	CMB 32	50
38mm Screwed male bush	CMB 38	25
50mm Screwed male bush	CMB 50	25

Screwed Locknut

Description	Cat. No.	Pack Quantity
20mm Screwed locknut	93	100
25mm Screwed locknut	94	100

Spacer Bar Saddle

Description	Cat. No.	Pack Quantity
20mm Spacer bar saddle	SBS 20	100
25mm Spacer bar saddle	SBS 25	100
32mm Spacer bar saddle	SBS 32	50
38mm Spacer bar saddle	SBS 38	25
50mm Spacer bar saddle	SBS 50	25

Strap Saddle

Description	Cat. No.	Pack Quantity
20mm Strap saddle	SS 20	100
25mm Strap saddle	SS 25	100
32mm Strap saddle	SS 32	100
38mm Strap saddle	SS 38	25
50mm Strap saddle	SS 50	25

Conduit & accessories available as standard black or white.

Conduit Fixing Accessories



SCS 20W

Round Conduit Clip

Description	Cat. No.	Pack Quantity
20mm Round conduit clip	SCS 20	100
25mm Round conduit clip	SCS 25	100



COC 4W

Oval Conduit Clip

Description	Cat. No.	Pack Quantity
13mm Oval conduit clip	COC 1W	100
16mm Oval conduit clip	COC 2W	100
20mm Oval conduit clip	COC 3W	100
25mm Oval conduit clip	COC 4W	100



CIE 20W

Inspection Elbow, Bend & Tee

Description	Cat. No.	Pack Quantity
20mm Inspection elbow	CIE 20	50
20mm Inspection bend	CIB 20	30
25mm Inspection bend	CIB 25	20
20mm Inspection tee	CIT 20	40
25mm Inspection tee	CIT 25	20



CSB 20W

Slip Bend

Description	Cat. No.	Pack Quantity
20mm Slip bend	CSB 20	25
25mm Slip bend	CSB 25	20



CHB 25W

Heavy Gauge Bend

Description	Cat. No.	Pack Quantity
20mm Heavy gauge bend c/w couplers	CHB 20	25
25mm Heavy gauge bend c/w couplers	CHB 25	15
32mm Heavy gauge bend c/w couplers	CHB 32	2
38mm Heavy gauge bend c/w couplers	CHB 38	2
50mm Heavy gauge bend c/w couplers	CHB 50	2



CR 2W

Reducer & Adaptor

Description	Cat. No.	Pack Quantity
25-20mm Reducer	CR 2	100
20mm Oval to round conduit adaptor	COR 20	100

Conduit & accessories available as standard black or white.

Conduit Boxes

- Lid fixing centres approx. 50.8mm.
- M4 brass inserts in pillars.
- Moulded recess for earth terminals (Ref ET 1).
- Boxes without lugs are suitable for loads up to 3kg centrally, at 60° maximum.
- Boxes with external lugs, riveted to M4 brass inserts in pillars are suitable for suspending loads up to 10kg centrally, at 60° maximum.
- External lugs can be used for screw fixing to the structure or keyed into concrete slab.



20 CRB 12W

Description	Cat. No.	Plain Box Pack Quantity
Plain box	20 CRB 1	30
20mm Plain box with back outlet	20 CRB 12	30
25mm Plain box with back outlet	25 CRB 12	20



20 CRB 2W

Description	Cat. No.	Terminal Box Pack Quantity
20mm Terminal box	20 CRB 2	30
25mm Terminal box	25 CRB 2	20



20 CRB 3W

Description	Cat. No.	Through Box Pack Quantity
20mm Through box	20 CRB 3	30
25mm Through box	25 CRB 3	20



20 CRB 4W

Description	Cat. No.	Angle Box Pack Quantity
20mm Angle box	20 CRB 4	30
25mm Angle box	25 CRB 4	20



20 CRB 5W

Description	Cat. No.	Tee Box Pack Quantity
20mm Tee box	20 CRB 5	20
25mm Tee box	25 CRB 5	20



20 CRB 6W

Description	Cat. No.	4 Way Box Pack Quantity
20mm 4 Way box	20 CRB 6	20
25mm 4 Way box	25 CRB 6	10

Conduit & accessories available as standard black or white.

Conduit Boxes



20 CRB 13W

Description	Cat. No.	Loop In Box Pack Quantity
20mm With 4 x 20mm knockouts	20 CRB 13	30



20 CRB 14W

Description	Cat. No.	Y & U Box Pack Quantity
20mm Y box	20 CRB 14	20
20mm U box	20 CRB 15	20



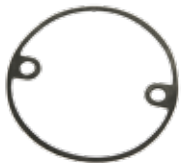
CCL 1W

Description	Cat. No.	Lids & Earth Electrode Box Pack Quantity
Circular lid	CCL 1	100
Overlapping lid, 85mm dia.	CCL 0	100
20mm Earth electrode box, black	CEB 1B	1



CXR 20W

Description	Cat. No.	Extension Ring Pack Quantity
12.5mm	CXR 12	50
20mm	CXR 20	50
25mm	CXR 25	50
38mm	CXR 38	20
50mm	CXR 50	10



CRG 1

Description	Cat. No.	Conduit Box Gasket Seal Pack Quantity
Rubber gasket seal	CRG 1	100

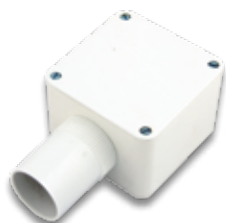


CAB 1W

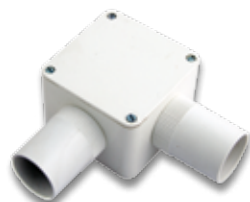
Description	Cat. No.	Adaptable Box Pack Quantity
75 x 75 x 50mm Adaptable box	CAB 1	5

Conduit & accessories available as standard black or white.

Conduit Boxes & Accessories



32 SRB 2W



32 SRB 4W



CBB 20W



CPS 20W



CHS 20



CLS 20

Terminal & Through Box

Description	Cat. No.	Pack Quantity
32mm Terminal box	32 SRB 2	5
32mm Through box	32 SRB 3	5

Angle Box

Description	Cat. No.	Pack Quantity
32mm Angle box	32 SRB 4	5

Bell Mouth Bush

Description	Cat. No.	Pack Quantity
20mm Bell mouth bush	CBB 20	100
25mm Bell mouth bush	CBB 25	100

Screwed Conduit Plug

Description	Cat. No.	Pack Quantity
20mm Screwed conduit plug	CPS 20	100
25mm Screwed conduit plug	CPS 25	100

Available in black & white, please state colour when ordering.

Heavy Gauge Conduit Bending Spring

Description	Cat. No.	Pack Quantity
20mm Heavy gauge bending spring (green tips)	CHS 20	1
25mm Heavy gauge bending spring (green tips)	CHS 25	1

Light Gauge Conduit Bending Spring

Description	Cat. No.	Pack Quantity
20mm Light gauge bending spring (red tips)	CLS 20	1
25mm Light gauge bending spring (red tips)	CLS 25	1

Conduit & accessories available as standard black or white.

Conduit Accessories



251W

Nylon Compression Gland		
Description	Cat. No.	Pack Quantity
20mm Small for 7.0-10.5 dia. cables	251	100
20mm Small plain end for 7.0-10.5 dia. cables	251 P	100
20mm Large for 8.0-13.0 dia. cables	252	100
20mm Large plain end for 8.0-13.0 dia. cables	252 P	100
25mm For 12.0-18.0 dia. cables	254	100

Compression glands available in white, black & red.



SA 2

Adhesive		
Description	Cat. No.	Pack Quantity
250ml Waterproof adhesive, permanent	SA 2	1

Waterproof Adhesive (Permanent) 250ml tin vinyl solvent cement for making watertight joints between uPVC conduit and fittings.



CDT 30

Nylon Draw Tape		
Description	Cat. No.	Pack Quantity
10m Nylon draw tape	CDT 10	1
20m Nylon draw tape	CDT 20	1
30m Nylon draw tape	CDT 30	1



GYE 3/4

Yellow/Green Sleeving		
Description	Cat. No.	Pack Quantity
2mm i/d 3mm o/d	GYE 2/3	100m
3mm i/d 4mm o/d	GYE 3/4	100m
4mm i/d 5mm o/d	GYE 4/5	100m
5mm i/d 6mm o/d	GYE 5/6	100m



BLUE 5/6

Blue Sleeving		
Description	Cat. No.	Pack Quantity
2mm i/d 3mm o/d	BLUE 2/3	100m
3mm i/d 4mm o/d	BLUE 3/4	100m
4mm i/d 5mm o/d	BLUE 4/5	100m
5mm i/d 6mm o/d	BLUE 5/6	100m



BROWN 4/5

Brown Sleeving		
Description	Cat. No.	Pack Quantity
2mm i/d 3mm o/d	BROWN 2/3	100m
3mm i/d 4mm o/d	BROWN 3/4	100m
4mm i/d 5mm o/d	BROWN 4/5	100m
5mm i/d 6mm o/d	BROWN 5/6	100m

Surface & Socket Boxes



CSU/8/1AL

Flush Fitting Socket Box

Description	Cat. No.	Pack Quantity
1 Gang, 35mm deep. 8 x 20mm round knockouts	CSU/8/1AL	20
2 Gang, 35mm deep. 12 x 20mm round knockouts	CSU/8/2AL	10

Supplied with 1 fixed lug & 1 adjustable lug.



SBR/3W

1 Gang Surface Box - Conduit Knockout

Description	Cat. No.	Pack Quantity
32mm Deep, square corners	SBR/3W	20
32mm Deep, rounded corners	SBR/7W	20
44mm Deep, square corners	SBR/9W	10



SBP 1W

1 Gang Surface Box - Plain Sides

Description	Cat. No.	Pack Quantity
25mm Deep, square corners	SBP 1W	20
32mm Deep, square corners	SBP 3W	20
25mm Deep, rounded corners	SBP 5W	20
32mm Deep, rounded corners	SBP 7W	20
44mm Deep, square corners	SBP 9W	10



SB 3W

1 Gang Surface Box - Mini Trunking Cutouts

Description	Cat. No.	Pack Quantity
25mm Deep, square corners	SB 1W	20
32mm Deep, square corners	SB 3W	20
25mm Deep, rounded corners	SB 5W	20
32mm Deep, rounded corners	SB 7W	20



SB 3/20W

1 Gang Surface Box - Multi Entry

Description	Cat. No.	Pack Quantity
32mm Deep, square corners	SB 3/20W	20
32mm Deep, rounded corners	SB 7/20W	20

Surface & Socket Boxes



SBR/4W

2 Gang Surface Box - Conduit Knockout

Description	Cat. No.	Pack Quantity
32mm Deep, square corners	SBR/4W	10
32mm Deep, rounded corners	SBR/8W	10
44mm Deep, square corners	SBR/10W	5



SBP 2W

2 Gang Surface Box - Plain Sides

Description	Cat. No.	Pack Quantity
25mm Deep, square corners	SBP 2W	10
32mm Deep, square corners	SBP 4W	10
25mm Deep, rounded corners	SBP 6W	10
32mm Deep, rounded corners	SBP 8W	10
44mm Deep, square corners	SBP 10W	5



SB 4W

2 Gang Surface Box - Mini Trunking Cutouts

Description	Cat. No.	Pack Quantity
25mm Deep, square corners	SB 2W	10
32mm Deep, square corners	SB 4W	10
25mm Deep, rounded corners	SB 6W	10
32mm Deep, rounded corners	SB 8W	10



SB 4/20W

2 Gang Surface Box - Multi Entry

Description	Cat. No.	Pack Quantity
32mm Deep, square corners	SB 4/20W	10
32mm Deep, rounded corners	SB 8/20W	10

Surface boxes manufactured to comply with BS 4662.

Dry Lining Boxes



CDLB1-35

1 Gang Dry Lining Box - Spring Action Lugs

Description	Cat. No.	Pack Quantity
Depth 35mm, aperture 73mm x 73mm, board thickness 6mm - 16mm	CDLB1-35	10



CDLB 1W

1 Gang Dry Lining Box

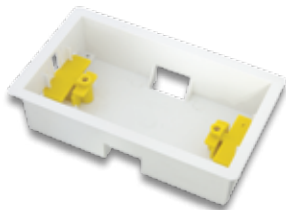
Description	Cat. No.	Pack Quantity
Depth 35mm, aperture 73mm x 73mm, board thickness 2mm - 19mm	CDLB 1W	10



CDLB2-35

2 Gang Dry Lining Box - Spring Action Lugs

Description	Cat. No.	Pack Quantity
Depth 35mm, aperture 73mm x 133mm, board thickness 6mm - 16mm	CDLB2-35	5



CDLB 2W

2 Gang Dry Lining Box

Description	Cat. No.	Pack Quantity
Depth 35mm, aperture 73mm x 133mm, board thickness 2mm - 19mm	CDLB 2W	5



CDLB1-47

1 Gang Deep Dry Lining Box - Spring Action Lugs

Description	Cat. No.	Pack Quantity
Depth 47mm, aperture 74mm x 73mm, board thickness 10mm - 26mm	CDLB1-47	10



CDLB 3W

1 Gang Deep Dry Lining Box

Description	Cat. No.	Pack Quantity
Depth 46mm, aperture 73mm x 73mm, board thickness 2mm - 30mm	CDLB 3W	10

Dry Lining Boxes



CDLB2-47

2 Gang Deep Dry Lining Box - Spring Action Lugs

Description	Cat. No.	Pack Quantity
Depth 47mm, aperture 73mm x 134mm, board thickness 10mm - 26mm	CDLB2-47	5



CDLB 4W

2 Gang Deep Dry Lining Box

Description	Cat. No.	Pack Quantity
Depth 46mm, aperture 73mm x 133mm, board thickness 2mm - 30mm	CDLB 4W	5



CDLBR 5W

Circular Dry Lining Box

Description	Cat. No.	Pack Quantity
Double back entry, depth 36mm, aperture 63.5mm, board thickness 2mm - 20mm, fixing centres 50.8mm	CDLBR 5W	10



CDLB 1+1W

Dual 1 + 1 Gang Dry Lining Box

Description	Cat. No.	Pack Quantity
Depth 35mm, board thickness 2mm - 19mm	CDLB 1+1W	10



CDLB 1+2W

Dual 1 + 2 Gang Dry Lining Box

Description	Cat. No.	Pack Quantity
Depth 35mm, board thickness 2mm - 19mm	CDLB 1+2W	6

Bespoke Products Features & Benefits

Bespoke Products

Make the Product Fit the Job

Design Features:

- Using their specialised and experience fabrication department, Centaur are able to provide bespoke cable management solutions to a variety of applications within all sectors of the industry.
- Considerations such as compliance with current legislation and project budgets are taken into account at an early design stage. Based upon their technical experience, Centaur can assist projects from design through to installation with continuous innovation.

- 1 Quick and efficient lead times to suit customer requirements.
- 2 Precision made products to suit exact specifications.
- 3 Guidance led support direct from the manufacturer.



Bespoke Products Features & Benefits



Bespoke Products

Multi-compartment trunking can be provided for installations that require vast amount of cables. Using Centaur's innovative base extension (ABX 1), customers can be supplied with a large number of extra centre compartments to suit cabling requirements. Working in coordination with this product, Centaur's flexibility enables them to fabricate accessories to maintain an aesthetically appealing system.



Multi-Compartment Trunking & Accessories



Anti-Microbial Trunking & Accessories

A popular choice for specification in hospitals, Centaur offers a complete range of anti-microbial trunking and accessories. A silver based additive added into the uPVC compound enables the prevention of bacteria spreading further if the surfaces are kept free of dirt and grime.

From corporate colours to Part M compliancy, Centaur offers a vast array of colours and finishes to a wide range of products. A choice of extruded/moulded or paint sprayed colours/finishes can facilitate quick lead times on specialised products. Wood effect trunking is also an option to match existing fixtures with buildings, Centaur offer both a light oak and mahogany finish along with sprayed colour coordinated accessories.



Colours/Finishes



Illuminated Trunking

Available plain, populated or pre-wired, the Centaur illuminated trunking is a great product for quiet studying, such as university halls of residence. With the option of cool or warm white LED fitting, illuminated trunking is ideal for a range of ambience. Units are tailor made to the customer's requirements from lengths to colour to wiring accessories.

Fabricated as a bespoke solution to eliminate tripping hazards and keep sockets out of arms reach from vulnerable people such as hospitals patients or students, pendants are available in a variety of lengths with a selection of wiring accessory configurations to install. Pendants are manufactured from a powder coated solid aluminium body, with a four compartment surrounding for added accessory space and a fixing plate included.



Pendants



Pre-Wired & Populated

Working in coordination with another of the Installation Materials Division operations, Centaur are able to offer trunking both pre-wired and populated with matching accessories. Pre-wired units vary from cut lengths of trunking to power posts to bench units and can be wired to tails or for a plug and play system.

Bespoke Products

With vertical or horizontal bedhead units available, Centaur offer a wide variety of accessories made for hospital applications. Penlon or Gem 10 medical gas plates can be fitted into the centre compartment of the Meridian or President ranges to enable fixing of gas, air and vacuum outlets. These outlets along with nurse call points can be fabricated into the trunking if provided with them.



Bedhead Units



Fabricated Angles
Specialist angles can be fabricated to adapt to pre-existing objects in buildings e.g. odd shaped pillars or existing trunking. Odd angles can also be created to provide a more pleasing to the eye finish in difficult installations. A variety of different compartment options are also available e.g. an angle that comes down from a four compartment trunking down to a three compartment trunking.

Fabricated Angles

Boasting four sides and a massive twelve compartments, the Centaur carousel systems is ideal for supplying several areas with power, data and voice from a central location. Available in light uPVC, sturdy aluminium or aluminium base with a uPVC lid, carousels are a very popular source within commercial applications.



Carousels



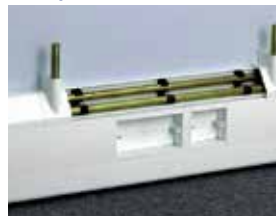
For use on the large (192mm) President chamfered compartments only, the Centaur pod accessory allows for the easy creation of a local extension (above or below the trunking run) where wiring accessories are required. Special accessories can be fabricated to order.

Pods

Supplying 10mm and 15mm pipe clips and offering a tidy pipe trunking outlet, Centaur pipe encasement is a practical yet visibly appealing method of housing pipe work. Centaur pipe clips are capable of holding pipes that operate up to a working temperature of 80°C and the pipes should not come into contact with the trunking walls. Clips are recommended to be installed at approximately one metre intervals along the trunking length.



Pipe Encasement



Endless Possibilities

From RCD/MCB housing to transparent trunking, Centaur offers a vast array of bespoke products beyond this page. To help transform ideas into products, please contact the Centaur sales office.

Technical Information

The uPVC material used in the manufacture of President trunking systems is resistant to most organic chemicals, solutions of organic acids, alkalis and salts. It may possibly

President uPVC Trunking Chemical Resistance

be softened by some organic materials such as ketones and aromatic compounds. If in doubt please contact Centaur sales office.

Strength

High impact resistance. The material is formulated to comply with the -5°C clause of BS 4678 Part 4 (1982), cable trunking standard.

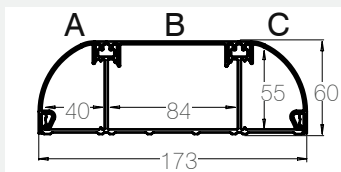
Fire Resistance

The materials used in Centaur President trunking system are non-flame propagating and comply with the requirements of BS 476 Part 7 and BS 4678 Part 4.

President systems are designed to accommodate local thermal expansion and contraction. The coefficient of linear expansion: 7.0×10^{-5} operating temperatures -5°C to 60°C.

President Aluminium Trunking Physical Constraints Of Pure Aluminium

Specific Gravity	2.70
Coeff. of expansion	$24.0 \times 10^{-6}/^{\circ}\text{C}$
Thermal conductivity at 100°C	0.523/calsec/cm ² /°C
Young's modulus of elasticity (E)	60.6 GPa
Torsion modulus	24 GPa
Poisson's ratio	0.34
Melting point	659.8°C

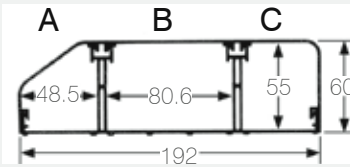


Meridian Cable Capacity ACD 3

Conductor	Size mm ²	Cable Factor	Capacity A @ 45% Full	Capacity B @ 45% Full	Capacity C @ 45% Full
Full Term CSA 100% Fill (mm ²)			1711	i-4442; ii-1758; iii-1356; iv-3202; v-3325	1711
PVC power stranded	1.5	8.6	i-89	i-232; ii-92; iii-71; iv-167; v-174	i-89
PVC power stranded	2.5	12.6	i-61	i-158; ii-63; iii-48; iv-113; v-118	i-61
PVC power stranded	4.0	16.6	i-46	i-120; ii-48; iii-37; iv-86; v-90	i-46
PVC power stranded	6.0	21.2	i-36	i-94; ii-37; iii-29; iv-67; v-70	i-36
Cat. 6 UTP	6.5* dia.	42.2	i-18	i-47; ii-18; iii-14; iv-33; v-35	i-18
Cat. 6 STP	7.0* dia.	49.0	i-15	i-40; ii-16; iii-12; iv-28; v-30	i-15
Cat. 7	8.0* dia.	64.0	i-12	1-31; ii-12; iii-9; iv-22; v-23	i-12

* - Typical values for guideline purposes only. i - denotes no outlet box fitted in compartment. ii - denotes 32mm deep outlet box fitted in compartment. iii - denotes 40mm deep outlet box fitted in compartment. iv - denotes 60mm radius corner guard fitted in compartment for internal/external angles. v - denotes 60mm radius corner guard protection fitted in compartment for flat angles.

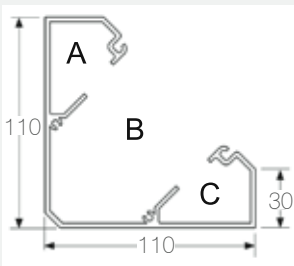
Cable Capacities



President Cable Capacity ASKT 3/BSKT 3W

Conductor	Size mm ²	Cable Factor	Capacity A @ 45% Full	Capacity B @ 45% Full	Capacity C @ 45% Full
PVC power stranded	1.5	8.6	i-101	i-225; ii-90; iii-71; iv-163; v-170	i-128
PVC power stranded	2.5	12.6	i-69	i-153; ii-61; iii-48; iv-111; v-115	i-87
PVC power stranded	4.0	16.6	i-52	i-116; ii-47; iii-36; iv-84; v-87	i-66
PVC power stranded	6.0	21.2	i-41	i-91; ii-36; iii-28; iv-66; v-68	i-52
Cat. 6 UTP	6.5* dia.	42.2	i-21	i-46; ii-18; iii-14; iv-33; v-35	i-26
Cat. 6 STP	7.0* dia.	49.0	i-18	i-39; ii-16; iii-12; iv-28; v-30	i-22
Cat. 7	8.0* dia.	64.0	i-13	i-29; ii-11; iii-8; iv-20; v-21	i-16

* - Typical values for guideline purposes only. i - denotes no outlet box fitted in compartment. ii - denotes 32mm deep outlet box fitted in compartment. iii - denotes 40mm deep outlet box fitted in compartment. iv - denotes 60mm radius corner guard fitted in compartment for internal/external angles. v - denotes 60mm radius corner guard protection fitted in compartment for flat angles.
 For ASD 1/BSD 1W, use the cable capacity section C twice and section B.
 For ACD 2/BCD 2W, use the cable capacity section A twice and section B.

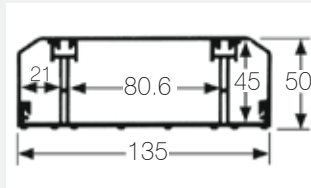
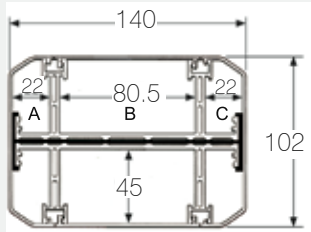


Bench Trunking Cable Capacity ABT 1/DBT 1

Conductor	Size mm ²	Cable Factor	Capacity A @ 45% Full	Capacity B @ 45% Full	Capacity C @ 45% Full
PVC power stranded	1.5	8.6	i-64	i-288; ii-168; iii-150	i-64
PVC power stranded	2.5	12.6	i-44	i-197; ii-115; iii-102	i-44
PVC power stranded	4.0	16.6	i-33	i-150; ii-87; iii-78	i-33
PVC power stranded	6.0	21.2	i-26	i-117; ii-68; iii-61	i-26
Cat. 6 UTP	6.5* dia.	42.2	i-13	i-56; ii-32; iii-28	i-13
Cat. 6 STP	7.0* dia.	49.0	i-11	i-50; ii-28; iii-25	i-11
Cat. 7	8.0* dia.	64.0	i-8	i-38; ii-21; iii-19	i-8

* - Typical values for guideline purposes only. i - denotes no outlet box fitted in compartment. ii - denotes 32mm deep outlet box fitted in compartment. iii - denotes 40mm deep outlet box fitted in compartment

Cable Capacities



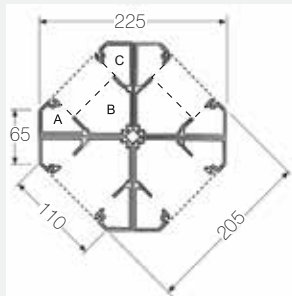
Power Pole/Post/President AP 1/AP 2/AP 680 & ACD 4

Conductor	Size mm ²	Cable Factor	Capacity A @ 45% Full	Capacity B @ 45% Full	Capacity C @ 45% Full
PVC power stranded	1.5	8.6	i-39	i-183; ii-53; iii-33; iv-121; v-141	i-39
PVC power stranded	2.5	12.6	i-27	i-125; ii-36; iii-22; iv-83; v-96	i-27
PVC power stranded	4.0	16.6	i-20	i-95; ii-27; iii-17; iv-63; v-73	i-20
PVC power stranded	6.0	21.2	i-16	i-74; ii-21; iii-12; iv-49; v-57	i-16
Cat. 6 UTP	6.5* dia.	42.2	i-8	i-37; ii-11; iii-6; iv-25; v-29	i-8
Cat. 6 STP	7.0* dia.	49.0	i-7	i-32; ii-9; iii-5; iv-21; v-25	i-7
Cat. 7	8.0* dia.	64.0	i-5	i-24; ii-6; iii-4; iv-15; v-18	i-5

* - Typical values for guideline purposes only. i - denotes no outlet box fitted in compartment. ii - denotes 32mm deep outlet box fitted in compartment. ACD 4

only - iii - denotes 40mm deep outlet box fitted in compartment. iv - denotes 50mm radius corner guard fitted in compartment for internal/external angles. v - denotes

50mm radius corner guard protection fitted in compartment for flat angles.

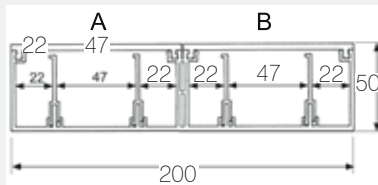


Carousel Post AP 5680/6680/7680

Conductor	Size mm ²	Cable Factor	Capacity A @ 45% Full	Capacity B @ 45% Full	Capacity C @ 45% Full
PVC power stranded	1.5	8.6	i-64	i-288; ii-168 iii-150	i-64
PVC power stranded	2.5	12.6	i-44	i-197; ii-115 iii-102	i-44
PVC power stranded	4.0	16.6	i-33	i-150; ii-87 iii-78	i-33
PVC power stranded	6.0	21.2	i-26	i-117; ii-68 iii-61	i-26
Cat. 6 UTP	6.5* dia.	42.2	i-13	i-56; ii-32 iii-28	i-13
Cat. 6 STP	7.0* dia.	49.0	i-11	i-50; ii-28 iii-25	i-11
Cat. 7	8.0* dia.	64.0	i-8	i-38; ii-21 iii-19	i-8

* - Typical values for guideline purposes only. i - denotes no outlet box fitted in compartment. ii - denotes 32mm deep outlet box fitted in compartment. iii - denotes 40mm deep outlet box fitted in compartment.

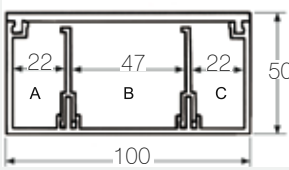
Campus DMXT 42W



Conductor	Size mm ²	Cable Factor	Capacity A @ 45% Full	Capacity B @ 45% Full
PVC power stranded	1.5	8.6	i-217; ii-64; iii-137	i-217; ii-64; iii-137
PVC power stranded	2.5	12.6	i-150; ii-44; iii-95	i-150; ii-44; iii-95
PVC power stranded	4.0	16.6	i-113; ii-33; iii-71	i-113; ii-33; iii-71
PVC power stranded	6.0	21.2	i-88; ii-26; iii-55	i-88; ii-26; iii-55
Cat. 6 UTP	6.5* dia.	42.2	i-45; ii-13; iii-28	i-45; ii-13; iii-28
Cat. 6 STP	7.0* dia.	49.0	i-39; ii-11; iii-24	i-39; ii-11; iii-24
Cat. 7	8.0* dia.	64.0	i-29; ii-8; iii-18	i-29; ii-8; iii-18

* - Typical values for guideline purposes only. i - denotes no outlet box or dividers fitted in compartment. ii - denotes 32mm deep outlet box and no dividers fitted in compartment. iii - denotes 50mm corner guard fitted for external angle only.

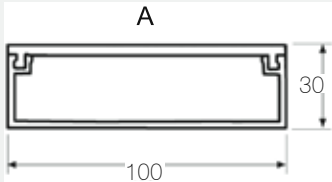
Cable Capacities



* - Typical values for guideline purposes only. i - denotes no outlet box or dividers fitted in compartment. ii - denotes 32mm deep outlet box and no dividers fitted in compartment. CMXT 42W/BMXT 42W only - iii - denotes 50mm corner guard fitted for external angle only.

Campus CMXT 42W & BMXT 42W & AP 3 Power Pole

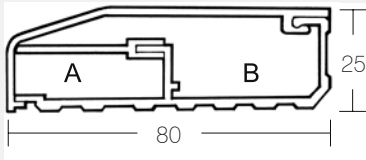
Conductor	Size mm ²	Cable Factor	Capacity A @ 45%	Capacity B @ 45%	Capacity C @ 45%
PVC power stranded	1.5	8.6	i-48; ii-15 iii-33	i-110; ii-31 iii-71	i-48; ii-15 iii-33
PVC power stranded	2.5	12.6	i-33; ii-10 iii-23	i-75; ii-21 iii-49	i-33; ii-10 iii-23
PVC power stranded	4.0	16.6	i-25; ii-8 iii-17	i-57; ii-16 iii-37	i-25; ii-8 iii-17
PVC power stranded	6.0	21.2	i-19; ii-6 iii-13	i-45; ii-12 iii-29	i-19; ii-6 iii-13
Cat. 6 UTP	6.5* dia.	42.2	i-10; ii-3 iii-7	i-22; ii-6 iii-14	i-10; ii-3 iii-7
Cat. 6 STP	7.0* dia.	49.0	i-8; ii-2 iii-6	i-19; ii-5 iii-12	i-8; ii-2 iii-6
Cat. 7	8.0* dia.	64.0	i-6; ii-2; iii-4	i-14; ii-4; iii-6	i-6; ii-2; iii-4



* - Typical values for guideline purposes only. i - denotes no outlet box or dividers fitted in compartment.

Campus CMXT 41

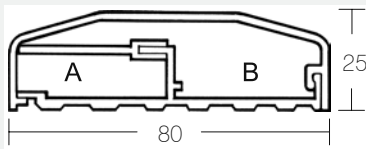
Conductor	Size mm ²	Cable Factor	Capacity A @ 45% Full
PVC power stranded	1.5	8.6	i-115
PVC power stranded	2.5	12.6	i-77
PVC power stranded	4.0	16.6	i-59
PVC power stranded	6.0	21.2	i-46
Cat. 6 UTP	6.5* dia.	42.2	i-23
Cat. 6 STP	7.0* dia.	49.0	i-19
Cat. 7	8.0* dia.	64.0	i-15



* - Typical values for guideline purposes only. i - denotes no outlet box or dividers fitted in compartment

Skirting Trunking CKD

Conductor	Size mm ²	Cable Factor	Capacity A @ 45% Full	Capacity B @ 45% Full
PVC power stranded	1.5	8.6	i-23	i-56
PVC power stranded	2.5	12.6	i-16	i-38
PVC power stranded	4.0	16.6	i-12	i-29
PVC power stranded	6.0	21.2	i-9	i-23
Cat. 6 UTP	6.5* dia.	42.2	i-5	i-11
Cat. 6 STP	7.0* dia.	49.0	i-4	i-10
Cat. 7	8.0* dia.	64.0	i-3	i-7



* - Typical values for guideline purposes only. i - denotes no outlet box or dividers fitted in compartment

Architrave Trunking CDA

Conductor	Size mm ²	Cable Factor	Capacity A @ 45% Full	Capacity B @ 45% Full
PVC power stranded	1.5	8.6	i-23	i-49
PVC power stranded	2.5	12.6	i-16	i-33
PVC power stranded	4.0	16.6	i-12	i-25
PVC power stranded	6.0	21.2	i-9	i-20
Cat. 6 UTP	6.5* dia.	42.2	i-5	i-9
Cat. 6 STP	7.0* dia.	49.0	i-4	i-8
Cat. 7	8.0* dia.	64.0	i-3	i-6

Cable Capacities

Choice of trunking is normally controlled by the quantity of cable to be carried. In accordance with the requirements of IEE wiring regulations, the space factor of trunking occupied should not exceed 45% of the cross sectional area of the section.

Mini Trunking Selection & Capacity

Cat. No.	Size	Nominal Cross Section Area Based On 45% Capacity
CMT 0	16mm x 10mm	42mm ²
CMT 1	16mm x 16mm	66mm ²
CMT 2	25mm x 16mm	120mm ²
CMT 3	38mm x 16mm	185mm ²
CMT 4	38mm x 25mm	325mm ²
CMT 5	50mm x 25mm	410mm ²

Choice of trunking is normally controlled by the quantity of cable to be carried. In accordance with the requirements of IEE wiring regulations, the space factor of trunking occupied should not exceed 45% of the cross sectional area of the section.

Maxi Trunking Selection & Capacity

Cat. No.	Size	Nominal Cross Section Area Based On 45% Capacity
CMXT 22	50mm x 50mm	930mm ²
CMXT 32	75mm x 50mm	1415mm ²
CMXT 33	75mm x 75mm	2200mm ²
CMXT 41	100mm x 30mm	1020mm ²
CMXT 42	100mm x 50mm	1895mm ²
CMXT 44	100mm x 100mm	4030mm ²

For each cable to be used, obtain the cable factors from the table above, add all factors together and compare to the capacities given. Any trunking with a space factor equal to or larger than that of the cable factors will satisfactorily accommodate the desired cables.

PVC Insulated Single-Core Cable In Trunking

Type Of Conductor	Conductor Cross-Sectional Area (mm ²)	Factor
Solid	1.5	7.1
	2.5	10.2
Stranded	1.5	8.1
	2.5	11.4
	4	15.2
	6	22.9
	10	36.3

Centaur conduit is light in weight (16% of weight of steel conduit), is clean and easy to handle, does not require the use of on site special equipment such as vice bender or thread cutting gear, is non-conductive, will not corrode or stain plaster.

Centaur conduit, oval conduit and high impact channelling should be installed using the special Centaur accessories.

Oval conduit and high impact channel are usually used for short runs in domestic situations, for external fixing or where the deep chasing required for round conduit is not possible. uPVC conduit has a rate of expansion greater than that of steel; it is therefore important to make sure that surface work allows for sliding joint into boxes or couplers, this will permit movement along the conduit

run and avoid distortion. The distance between saddles or clips should not exceed 4' 0" (1.20m). If possible the boxes should be fixed first and a line used to establish correct alignment, which will ease the threading of cable through the conduit. Cutting can be performed with any fine-toothed saw. Bending or forming of conduit of 25mm Dia. or less can be achieved cold, provided the appropriate bending spring is employed internally in the location of the bend. Greater diameters may need local application of gentle heat. Cable is threaded by using the Centaur draw tape. Centaur plastic conduit cement provides a waterproof joint which is easily made by painting the female internal surface of any joint before sliding the male section in with a twisting action to spread the cement evenly.

Cable Capacities

Conduit Cable Capacity

Conductor	Conductor cross sectional area mm ²	Factor	Conduit dia. mm	Factor	Conductor	Conductor cross sectional area mm ²	Factor
Solid	1	22	16	290	Solid or stranded	1	16
	1.5	27	20	460		1.5	22
	2.5	39	25	800		2.5	30
Stranded	1.5	31	32	1400	4	43	
	2.5	43	Table 12B. Conduit factors short straight runs		6	58	
	4	58			10	105	
	6	88					
	10	146					

Table 12A. Cable factors short straight runs

Table 12C. Cable factors for long straight or runs incorporating bends

Single-core PVC insulated cables in straight runs of conduit exceeding 3m in length or in runs of any length incorporating bends or sets. The information in the tables is intended only for guidance.

Calculation system based on Appendix 12 IEE Wiring Regulations.

1. Use table 12A or 12C to determine the factor for each cable being used.
2. Add the appropriate cable factors and compare with the conduit factor from table 12B or 12D.
3. The required conduit size is the one having a factor equal to or greater than the sum of the cable factors.

Conduit Cable Capacity

Length Of Run (m)	Conduit Diameter (mm)																			
	16	20	25	32	16	20	25	32	16	20	25	32	16	20	25	32				
	Straight				One Bend				Two Bends				Three Bends				Four Bends			
1	Covered By Tables 12A and 12B				188	303	543	947	177	286	514	900	158	256	463	818	130	213	288	692
1.5					182	294	528	923	167	270	487	857	143	233	422	750	111	182	333	600
2					177	286	514	900	158	256	463	818	130	213	388	692	97	159	292	529
2.5					171	278	500	878	150	244	442	783	120	196	358	643	86	141	260	474
3					167	270	487	857	143	233	422	750	111	182	333	600				
3.5	179	290	521	911	162	263	475	837	136	222	404	720	103	169	311	563				
4	177	286	514	900	158	256	463	818	130	213	388	692	97	159	292	529				
4.5	174	282	507	889	154	250	452	800	125	204	373	667	91	149	275	500				
5	171	278	500	878	150	244	442	783	120	196	358	643	86	141	260	474				
6	167	270	487	857	143	233	422	750	111	182	333	600								
7	162	263	475	837	136	222	404	720	103	169	311	563								
8	158	256	463	818	130	213	388	692	97	159	292	529								
9	154	250	452	800	125	204	373	667	91	149	275	500								
10	150	244	442	783	120	196	358	643	86	141	260	474								

Table 12D Conduit factors for runs incorporating bends.

Index

20 CRB 1	46	ACD 2	10	AMC 2/4.....	13
20 CRB 2	46	ACD 3	6	AMC 5.....	13
20 CRB 3	46	ACD 4	10	AMS 2.....	13
20 CRB 4	46	ACD 5	10	AMS 5.....	13
20 CRB 5	46	ACGE 3.....	7	AP 1	22
20 CRB 6	46	ACGE 50.....	13	AP 2	22
20 CRB 12.....	46	ACGE 60.....	13	AP 3W.....	23
20 CRB 13.....	47	ACH 1	13	AP 680.....	22
20 CRB 14.....	47	ACH 3	7	APF 1	22
20 CRB 15.....	47	ACH 4	13	APM 1BL.....	7, 13
25 CRB 2	46	ACL 1.....	7, 13	APM 1G.....	7, 13
25 CRB 3	46	ACL 1G.....	7, 13	APT 1	22
25 CRB 4	46	ACS 1	11	ASB 1.....	7, 12, 16, 19, 21
25 CRB 5	46	ACSK 3	11	ASB 1V.....	7, 12, 16, 22
25 CRB 6	46	AEC 2.....	11	ASB 2.....	7, 12, 16, 19, 21
25 CRB 12.....	46	AEC 2/45	11	ASB 3.....	7, 12, 16, 19, 21
32 SRB 2	48	AEC 3.....	6	ASBC6 1	7, 12, 16
32 SRB 3	48	AEC 4.....	11	ASBC6 2	7, 12, 16
32 SRB 4	48	AEC 4/45	11	ASD 1	10
93.....	44	AEC 5.....	11	ASI	13
94.....	44	AECC 2.....	11	ASI/4	13
251.....	49	AECC 3.....	6	ASKT 3.....	10
251 P	49	AECC 4	11	ASP 1.....	7, 12, 16, 19, 21
252.....	49	AECC 5.....	11	ASP 2.....	7, 12, 16, 19, 21
252 P	49	A ECS 1	11	ASQ 1	13
254.....	4	AEC SK-3LH	11	ATS 1	22
		AEC SK-3RH.....	11	ATS 1500	22
		AES 1	11		
		AES 1/45.....	11		
		AESK 3.....	11	B	
A		AESK 3/45.....	11	BB 1.....	16
AB 1	13	AFA 1	12	BBS 1.....	16, 21, 29
AB 3	7	AFA 2	12	BBS 2.....	16, 21, 29
AB 4	13	AFA 3	6	BCC 2W.....	15
ABC	19	AFA 4	12	BCD 2W.....	14
ABC TW	20	AFA 5	12	BCH 1W.....	16
ABE 1	19	AFAD 3.....	12	BCL 1W	16
ABEC 1.....	19	AFAU 3.....	12	BCS 1W	15
ABEC 1LH.....	19	AFT 1	12	BCKS 3W.....	15
ABEC 1LH TW	20	AFT 2	12	BEC 2/45W.....	15
ABEC 1RH.....	19	AFT 3	7	BEC 2W.....	15
ABEC 1RH TW	20	AFT 4	12	BECC 2W.....	15
ABEC 1 TW.....	20	AFT 5	12	BECS 1W.....	15
ABEC 2	19	AFTD 3.....	12	BECSK-3LHW	15
ABEC 2 TW	20	AFTU 3.....	12	BECSK-3RHW	15
ABI 1	19	AIC 2.....	11	BES 1/45W	15
ABT 1	19	AIC 2/45.....	11	BES 1W.....	15
ABU 1	18	AIC 3.....	6	BES 42W.....	28
ABU 1/1/2.....	18	AIC 4.....	11	BESK 3/45W	15
ABU 1/2.....	18	AIC 4/45.....	11	BESK 3W	15
ABU 2	18	AIC 5.....	11	BFA 1W.....	16
ABU 2/2	18	AIS 1	11	BFA 2W.....	16
ABU 3	18	AIS 1/45	11	BFAD 3W	16
ABUD 1.....	18	AISC6 1.....	11	BFAM 42W.....	28
ABUD 1/2.....	18	AISK 3.....	11	BFAT 42W.....	28
ABUD 2.....	18	AISK 3/45.....	11	BFAU 3W	16
ACC 2	11	ALD 1.....	13, 16	BFT 1W.....	16
ACC 3.....	6	ALD 3.....	7	BFT 2W.....	16
ACC 4	11	AMC 2.....	13	BFTD 3W	16
ACC 5.....	11				

Index

BFTM 42W.....	29	CDLB 3W.....	52	CIAM 42W.....	26
BFTT 42W.....	29	CDLB 4W.....	53	CIAT 22W.....	35
BFTU 3W.....	16	CDLBR 5.....	40	CIAT 32W.....	35
BIAM 42W.....	28	CDLBR 5W.....	53	CIAT 33W.....	35
BIC 2/45W.....	15	CDMT 2.....	33	CIAT 44W.....	35
BIC 2W.....	15	CDR.....	33	CIB 20.....	45
BIS 1/45W.....	15	CDS 1.....	33	CIB 25.....	45
BIS 1W.....	15	CDS 2.....	33	CIC 22W.....	34
BISK 3/45W.....	15	CDT 10.....	49	CIC 32W.....	34
BISK 3W.....	15	CDT 20.....	49	CIC 33W.....	34
BLUE 2/3.....	49	CDT 30.....	49	CIC 41W.....	26
BLUE 3/4.....	49	CDX.....	33	CIC 42W.....	26
BLUE 4/5.....	49	CEB 1B.....	47	CIC 44W.....	34
BLUE 5/6.....	49	CEC 20.....	43	CIE 20.....	45
BMXT 42W.....	28	CEC 25.....	43	CIT 20.....	45
BROWN 2/3.....	49	CES 22W.....	34	CIT 25.....	45
BROWN 3/4.....	49	CES 32W.....	34	CKA-LH.....	32
BROWN 4/5.....	49	CES 33W.....	34	CKA-RH.....	32
BROWN 5/6.....	49	CES 41W.....	26	CKC.....	32
BSD 1W.....	14	CES 42W.....	26	CKD.....	32
BSKT 3W.....	14	CES 44W.....	34	CKD 1.....	32
BSQ 1W.....	16	CFA 20.....	44	CKE-LH.....	32
BXAM 42W.....	28	CFA 25.....	44	CKE-RH.....	32
BXC 42W.....	28	CFA 32.....	44	CKI.....	32
		CFA 38.....	44	CKMT 2.....	32
		CFA 50.....	44	CKR.....	32
		CFAM 22W.....	35	CKS 1.....	32
C		CFAM 41W.....	27	CKS 2.....	32
CAB 1.....	47	CFAM 42W.....	27	CKX.....	32
CAF 2.....	43	CFAT 22W.....	35	CLR 20.....	44
CAF 3.....	43	CFAT 32W.....	35	CLR 25.....	44
CB 1R.....	41	CFAT 33W.....	35	CLR 32.....	44
CB 2R.....	41	CFAT 44W.....	35	CLR 38.....	44
CB 3R.....	41	CFP 2.....	43	CLR 50.....	44
CB 4R.....	41	CFP 3.....	43	CLS 20.....	48
CB 5R.....	41	CFP-20B-10M-CP.....	43	CLS 25.....	48
CB 6R.....	41	CFP-20W-10M-CP.....	43	CMA 20.....	43
CB 7R.....	41	CFP-25B-10M-CP.....	43	CMA 25.....	43
CB 8R.....	41	CFP-25W-10M-CP.....	43	CMA 32.....	43
CB 9R.....	41	CFTM 22W.....	35	CMA 38.....	43
CBB 20.....	48	CFTM 41W.....	27	CMA 50.....	43
CBB 25.....	48	CFTM 42W.....	27	CMB 20.....	44
CCL 0.....	47	CFTT 22W.....	35	CMB 25.....	44
CCL 1.....	47	CFTT 32W.....	35	CMB 32.....	44
CCL 1R.....	41	CFTT 33W.....	35	CMB 38.....	44
CDA.....	33	CFTT 44W.....	35	CMB 50.....	44
CDA 1.....	33	CG 42.....	27, 29	CMT 0SA.....	36
CDC.....	33	CH 050W.....	42	CMT 0W.....	36, 40, 41
CDE.....	33	CH 100W.....	42	CMT 1SA.....	36
CDFA.....	33	CH 150W.....	42	CMT 1W.....	36
CDFT.....	33	CHB 20.....	45	CMT 2R.....	40
CDI.....	33	CHB 25.....	45	CMT 2SA.....	36
CDLB 1+1W.....	53	CHB 32.....	45	CMT 2W.....	36
CDLB 1+2W.....	53	CHB 38.....	45	CMT 3SA.....	36
CDLB1-35.....	52	CHB 50.....	45	CMT 3W.....	36
CDLB1-47.....	52	CHS 20.....	48	CMT 3W T/C.....	36
CDLB 1W.....	52	CHS 25.....	48	CMT 4SA.....	36
CDLB2-35.....	52	CIAM 22W.....	35	CMT 4W.....	36
CDLB2-47.....	53	CIAM 41W.....	26	CMT 5SA.....	36
CDLB2-47.....	53				
CDLB 2W.....	52				

Index

CMT 5W.....	36	DBU 1.....	18	LG 25.....	42
CMT 5W T/C.....	36	DBU 1/1/2.....	18	LG 32.....	42
CMXT 22W.....	34	DBU 1/2.....	18	LG 38.....	42
CMXT 32W.....	34	DBU 2.....	18	LG 50.....	42
CMXT 33W.....	34	DBU 2/2.....	18		
CMXT 41W.....	26	DBU 3.....	18		
CMXT 42W.....	26	DBUD 1.....	18	M	
CMXT 44W.....	34	DBUD 1/2.....	18	M4 x 12mm.....	41
COC 1W.....	45	DBUD 2.....	18	MA 1W.....	38
COC 2W.....	45	DES 42W.....	26	MA 2W.....	38
COC 3W.....	45	DFAM 42W.....	27	MC 0W.....	37
COC 4W.....	45	DFTM 42W.....	27	MC 1W.....	37
COR 20.....	45	DIAM 42W.....	26	MC 2R.....	40
CPS 20.....	48	DIV 2W.....	36	MC 2W.....	37
CPS 25.....	48	DIV 3W.....	36	MC 3W.....	37
CR 2.....	45	DIV 4W.....	36	MC 4W.....	37
CRG 1.....	47	DIV 5 METAL.....	36	MC 5W.....	37
CRT 42W.....	27, 29	DIV 5W.....	36	MCR 2W.....	38
CS 42W.....	27, 29	DIV 22W.....	34	MEB 0W.....	38
CSB 20.....	45	DIV 33W.....	34	MEB 1W.....	38
CSB 25.....	45	DIV 40.....	20	MEB 2R.....	40
CSC 20.....	43	DIV 41W.....	26	MEB 2W.....	38
CSC 25.....	43	DIV 42/S.....	28	MEB 3W.....	38
CSC 32.....	43	DIV 42W.....	26	MEB 4W.....	38
CSC 38.....	43	DIV 44W.....	34	MEB 5W.....	38
CSC 50.....	43	DMXT 42W.....	26	MEC 0W.....	37
CSP 1W.....	23, 27, 29	DXAM 42W.....	27	MEC 1W.....	37
CSP 2W.....	27, 29	DXC 42W.....	26	MEC 2R.....	40
CSPB 1W.....	23, 29			MEC 2W.....	37
CSPB 1W.....	27			MEC 3W.....	37
CSPB 2W.....	29	E		MEC 4W.....	37
CSPB 2W.....	27	ECR 110W.....	7, 13	MEC 5W.....	37
CSU/8/1AL.....	50	ECR 210W.....	7, 13	MFB 0W.....	38
CSU/8/2AL.....	50	ECS 110W.....	7, 13	MFB 1W.....	38
CXAM 22W.....	35	ECS 210W.....	7, 13	MFB 2R.....	40
CXAM 41W.....	27			MFB 2W.....	38
CXAM 42W.....	27	F		MFB 3W.....	38
CXAT 22W.....	35	FL 1R.....	40	MFB 4W.....	38
CXAT 32W.....	35	FL 2R.....	40	MFB 5W.....	38
CXAT 33W.....	35			MIB 0W.....	37
CXAT 44W.....	35			MIB 1W.....	37
CXC 41W.....	26	G		MIB 2R.....	40
CXC 42W.....	26	GYE 2/3.....	49	MIB 2W.....	37
CXR 12.....	47	GYE 3/4.....	49	MIB 3W.....	37
CXR 20.....	47	GYE 4/5.....	49	MIB 4W.....	37
CXR 25.....	47	GYE 5/6.....	49	MIB 5W.....	37
CXR 38.....	47			MT 0-0W.....	38
CXR 50.....	47			MT 1-1W.....	38
				MT 2-2R.....	40
D				MT 2-2W.....	38
DBE 1.....	20	H		MT 3-3W.....	38
DBE 2.....	20	HG 20.....	42	MT 4-4W.....	38
DBI 1.....	20	HG 25.....	42	MT 5-5W.....	38
DBI 2.....	20	HG 32.....	42		
DBT 1/2M.....	20	HG 38.....	42	O	
DBT 1/3M.....	20	HG 50.....	42	OCO 500W.....	42
DBT 2/2M.....	20			OCO 625W.....	42
DBT 2/3M.....	20	L		OCO 750W.....	42
		LG 20.....	42		

Index

OCO 1000W	42
OCO 1250W	42
OCO 1500W	42

R

RS 200	41
--------------	----

S

SA 2	49
SA 3	13
SB 1W	50
SB 2W	51
SB 3/20W	50
SB 3W	50
SB 4/20W	51
SB 4W	51
SB 5W	50
SB 6W	51
SB 7/20W	50
SB 7W	50
SB 8/20W	51
SB 8W	51
SB 201R	40
SB 202R	40
SBP 1W	50
SBP 2W	51
SBP 3W	50
SBP 4W	51
SBP 5W	50
SBP 6W	51
SBP 7W	50
SBP 8W	51
SBP 9W	50
SBP 10W	51
SBR/3W	50
SBR/4W	51
SBR/7W	50
SBR/8W	51
SBR/9W	50
SBR/10W	51
SBS 20	44
SBS 25	44
SBS 32	44
SBS 38	44
SBS 50	44
SCS 20	45
SCS 25	45
SS 20	44
SS 25	44
SS 32	44
SS 38	44
SS 50	44



VISIT OUR WEBSITE

WWW.CENTAURMFG.COM



ACCESS TO ALL OUR PRODUCTS.
CATALOGUE & DATA SHEET DOWNLOADS.
FOLLOW US ON SOCIAL MEDIA.

Centaur

01527 528 049
sales@centaurmfg.com
www.centaurmfg.com

Pipers Road,
Park Farm Ind. Est.
Redditch
Worcestershire
B98 0HU



Centaur Manufacturing

@centaurmfg

The content of this catalogue is for information only.
The manufacturer reserves the right to alter design or
specification without prior notice.

Colours are reproduced as accurately as photographic
and printing processes allow and may not exactly
match the actual products.

Issue 2.0