

CH Ceramic Heaters

- Heats people rather than space
- Direct radiant heating without light output
- Virtually instant heat – ideally suited to irregularly used premises

Typical Applications

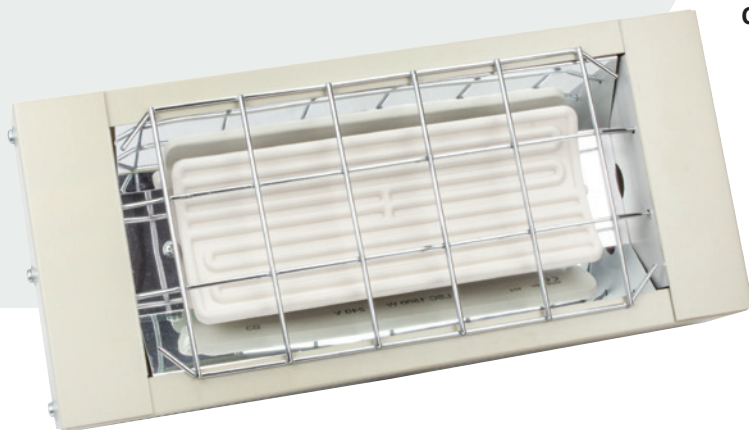
- Community halls
- Workshops
- Kennels
- Zoos

Features

- Aluminium construction with safety grille
- Long life 'no glow' ceramic heat emitters
- Wall mounting bracket with 'up and down' and 'side to side' angle adjustment
- 1m high temperature cable



CH-3000 3kW Ceramic Heater providing directional radiant heat without light output



CH-1500 1.5kW Ceramic Heater fully effective within a few minutes

Heater Range

Model	kW
CH-1500	1.5
CH-3000	3.0

Technical Specification

kW	Volts	Dimensions(mm)			Weight (kg)
		H	W	D	
1.5kW	230	190	405	72	1.8
3kW	230	345	405	72	2.8

A 3kW ceramic heater provides localised heating for visitors to a London craft centre



Control Options

Description	Model	Details
Dimmer (3kW max)	VR-2	Page 77
Push Button Timer	TS-6	Page 74
Movement Sensor	WH-402	Page 76



Spot the Iguana!



Ceramic heaters provide economic heating in a social club

