



Interior/Exterior Product Guide



2016/2017

Brighter Solutions through Innovation

Who we are

Brackenheath are a leading UK lighting manufacturer, with a pedigree stretching back over 30 years, Brackenheath has earned the reputation for supplying high quality products at competitive prices.

What we do

Updates in legislation and continuous product development, particularly in LED technology, allows Brackenheath to be at the forefront by offering the latest LED lighting, which offers up to 85% energy savings against conventional light sources, significantly reducing running and maintenance costs.

Why choose us

The Brackenheath team provides its customers with a first class service and strives to offer the latest in low energy and LED light sources for the future. Unique thinking, innovative designs and attention to detail has ensured Brackenheath have become the number one choice for LED floodlights in the UK lighting market. Exclusive and protected designs on the ispot®, along with the Knight Series floodlights, ensures that the Brackenheath range remains unrivalled in terms of quality, performance and value for money.



All Brackenheath products are covered by a 1 year guarantee unless otherwise stated

Brackenheath is an ISO 9001 registered organisation. All our products are designed to a high specification to meet the relevant British and European Standards, allowing them to carry the CE mark where required.

Brackenheath is also registered to ISO14001:2004 Environmental Management Systems.



CONTENTS

Featured Products

ispot®	5
Knight Series	6
LED360	7
Fireshield	8
Tube+	9



Interior

Cabinet Lighting	11-14
Fire rated Downlights	15
Desk Lamps	16-19
Tube+	20-22
LED360 Corn Lamps IP40	23-25
LED360 Corn Lamps IP64	26-27



Exterior

LED Floodlights	29-39
LED Industrial Floodlights	40
LED Tunnel Lights	41
Floodlight Accessories	42-50
LED Bulkheads	51-57
Garden Lighting	58-62
Wall Lights	63-65
LED Sign Light	66-67



Emergency Lighting

ispot® Lozenge Emergency	69
ispot® Lozenge Exit Box	70
LED Emergency Bulkhead	71
LED Emergency Twin Spot	72
LED Emergency Exit Sign	73
LED Emergency Mini Spot	74
LED Emergency Exit Box	75
Disabled Toilet Alarm Kit	76
LED Tube+ Emergency	77-78



Technical	79-80
POS Options	81
Case Studies	82
Index	83



ICON GUIDE

Our latest catalogue has been designed to make ordering the Brackenheath product both quick and easy; you will find icons to help in locating products by key product features.



LED Icon

Indicates the product incorporates LED as the light source



Emergency Icon

Indicates the product has an emergency lighting option available



Indoor Use Icon

Indicates the product is suitable for indoor use



Outdoor Use Icon

Indicates the product is suitable for outdoor use



2 Year Guarantee Icon

Indicates the product is supplied with a 2 year guarantee



3 Year Guarantee Icon

Indicates the product is supplied with a 3 year guarantee



Energy Saving Icon

Indicates the product incorporates an energy saving light source



USB Icon

Indicates the product features an inbuilt USB port



RGB Icon

Indicates the product is colour changing through multiple colours



At Brackenhath, we pride ourselves on being at the forefront of LED lighting technology, through innovative design and knowledge we have established the 'Highly Commended' **ispot® Driverless Floodlight**.

The **ispot®** is widely known as the most advanced LED floodlight within the lighting market, and incorporates innovative high voltage LED Nichia chips. These high voltage LED chips mean the **ispot®** does not require a driver, reducing the level of heat generated whilst increasing efficiency and reliability.

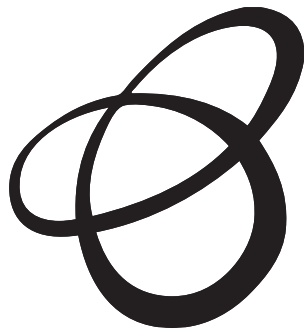
To preserve our place in this continually growing market we have worked intensely to develop the **ispot® Driverless Floodlight** range further. We are now able to offer a full range of eco-friendly driverless products.

The **ispot® Driverless Series** is now not only a range of incomparable driverless floodlights but now introduces a full range of **ispot® Driverless Bulkheads** and **ispot® Desk Lamps** and accessories. This range of remarkable new products follow the same skilled design and capability of the **ispot® Driverless Floodlight** but add a renewed attitude to the range.

Most recently Brackenhath have extended the **ispot® Floodlight** range to introduce the **ispot® SE**. The **ispot® SE** is as aesthetically pleasing as the premium ispots but also offers its own individual features including rear cable entry and a matte black finish.



View pages **16-19** for *ispot®* desk lamps, **29-36** for *ispot®* floodlights, **42-44** for *ispot®* accessories and **51-57** for *ispot®* bulkheads...



Knight Series

LED Floodlights

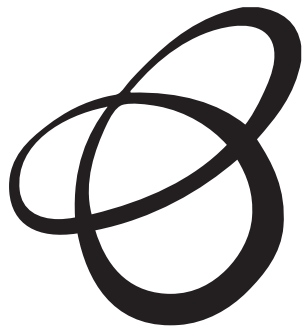
Through innovative design and knowledge Brackenheath have established a NEW unique and attractive LED floodlight. With an exclusive and protected design the **Knight Series** is yet to be rivalled in the ever growing competitive floodlight market.

The **Knight Series** incorporates a high grade aluminium and steel construction, with the introduction of hex head bolts for additional security. To provide this aesthetically pleasing fitting, intricate planning and technical development was undertaken to enable Brackenheath to integrate the driver into the housing, this has permitted us to create a distinctive slim line fitting. Side cable entry has also been developed to improve the appearance of the floodlight as the cable is less visible when the fitting is installed.

The **Knight Series** LED floodlights are available from 10W–100W, in PIR and Non-PIR versions, complete with Black housing.



View pages **37-40** for the full range...



LED360

The Brackenheath LED360 is a unique range of lamps designed to replace metal halide and high pressure sodium lamps. The LED360 offers energy savings of up to 80%, whilst increasing the rated life up to 50,000 hours.

Available in IP64 and IP40 versions, the LED360 lamps are ideal for use in high bay and low bay light fittings, street lighting and lamp posts, floodlights and petrol station canopy lights.

IP64 Version

Waterproof & Dustproof

The LED strips on the LED360 lamp are rated to IP64 using a unique polycarbonate lens. This also results in no loss of lumen output caused by the LED's being affected by dust.

Unique heat sink design

The heat sink in the IP64 LED360 adopts a unique radiator design manufactured from high grade aluminium, allowing the heat to dissipate effectively without the need for a cooling fan. This design allows the lamp to be used in both open and enclosed fittings.

IP40 Version

The IP40 range is suitable for all indoor lighting applications with open fittings, and all versions are complete with an integral driver. The 60W, 80W and 100W lamps also incorporate a special cooling fan in the base to aid heat dissipation.



View pages **24-27** for the full range...

Fireshield

Why Fire Rated Downlights must be used

In accordance with Building Regulations Approved Document B (Fire Safety), it is necessary that to inhibit the spread of fire within the building, the internal linings (walls & ceilings) shall adequately resist the spread of flames over the surface.

When fitted, recessed downlights effectively become part of the internal lining so they must not affect the fire resistance of the ceiling.

When installing **Fireshield** Fire Rated Downlights, you allow the building construction to comply with Part B - Fire safety of the Buildings Regulations, whether a 30, 60 or 90-minute fire barrier is required.

Fireshield Fire Rated Downlights have seals preventing air movement through the light fitting, which help reduce condensation building up. These seals also help reduce airborne and impact sounds, allowing the building to comply with Building Regulation Part E - Resistance to the Passage of Sound.

All in all, the new **Fireshield** fire rated downlights allow the installation to comply with the latest versions of the Building Regulations, and with fittings available in fixed, tilt and IP65 shower versions, in three finishes of white, chrome and satin chrome, all installations will look stylish whilst still functional.

Air Vents/Heat Sink

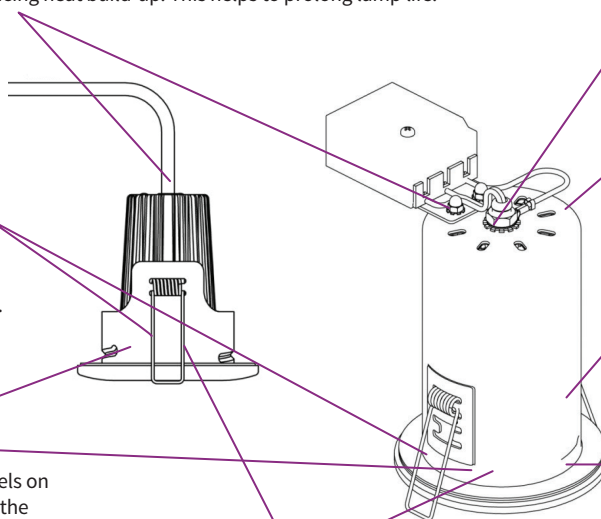
Large air vents and heat sink (on LED) maximise airflow allowing the light fittings to dissipate heat and reducing heat build-up. This helps to prolong lamp life.

Mounting Springs

These are fixed in a high position to allow installation into either single or double thickness plasterboard.

Bezel

Twist and lock style bezels on all fittings, which retain the lamps for ease of replacement. IP65 fittings also incorporate tempered glass in the bezel.



Nylon Terminal Housing

Large terminal block allows loop in-out of cables to ease installation.

Heat Resistant Cables

Cables are Teflon coated, removing need for additional sheath.

Intumescent Material

Intumescent material is incorporated into vents to seal the ceiling in the event of a fire.

Lamps

Aluminised lamps should be used in all fire rated downlights, which project light and heat forward.

Gasket & Seals

The gaskets and seals prevent movement of air, allowing compliance with BS 5250 Control of Condensation, as well as allowing compliance with Part E of the Building Regulations (Passage of Sound).



View page **15** for full range...

The LED Tube. *Reinvented.*

Introducing the tube+

Following Brackenheaths continuous design and development in LED technology we are now able to offer the LED tube+.

The reinvented LED tube+ is designed for use with 110V and 230V applications

- ✓ The LED tube+ has a wide voltage range (100-240V)
- ✓ Ideal replacement for existing fluorescent lighting systems
- ✓ Pre-wired weatherproof luminaires are available for quick and easy installation.
- ✓ The tube+ is ideal for industrial, site, commercial and leisure applications.

The Briticent tube+ LED emergency tube is a unique LED tube that will operate under normal and emergency lighting conditions. The tube+ incorporates both the LED driver and emergency battery pack within the tube, so there is no requirement for additional equipment to be installed. The tube+ LED emergency tube intelligently detects the difference between power failure and deliberately switching off the lighting by utilizing a two switch system.

- ✓ The unique LED tube+ emergency has inbuilt batteries and intelligent operation
- ✓ The tube+ emergency is suitable to replace T8 fluorescent lamps in existing luminaires, or can be used with the Briticent LED ready luminaire.
- ✓ The tube+ lighting application can be switched off at the end of the working day by employing the two switch system.

1. Switch the power off to activate the emergency function
2. Switch the power back on to reinstate normal lighting
3. Immediately switch the power back off (within 3 seconds) to switch off the lighting. The lighting will then remain off until power is restored the next time lighting is required.





CONTENTS

LED Link Lights	12
C Range Link Lights	13
D Range Link Lights	14
Fire Rated Down Lights	15
ispot® Leaf Desk Lamp	17
ispot® Blade Desk Lamp	18
ispot® Energize Wireless Charging Desk Lamp	19
LED Tube+ 2ft	21
LED Tube+ 5ft	22
LED360 Corn Lamps IP40	24-25
LED360 Corn Lamps IP64	26-27

12
13
14
15
17
18
19
21
22
24-25
26-27

Cabinet Lighting

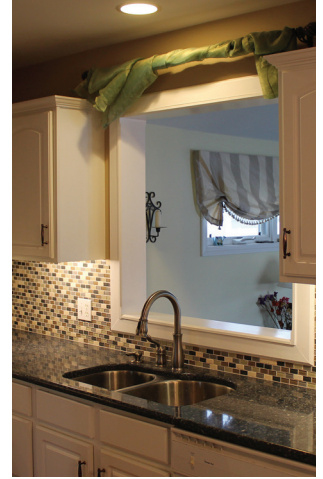


Suitable for **kitchens**, **cabinets** and **domestic** display lighting.

Brackenheath LED Link Lights

4-14W

IP20



Available Colour:



Interior

FEATURES

- Cool white LEDs (4000K)
- Supplied with opal diffuser
- Complete with power lead, top or side mounting brackets, butt joiner and cap fitted
- Integral driver
- Fittings are individually switched
- Flicker free quick start - non dimmable
- Can be connected butt to butt or using link lead connectors
- Width: 22mm, height: 30mm
- Rated life of 35,000 hours
- IP20
- 230V



Wattage	T5 Alternative	Fitting Length	Luminous Flux	No. of Fittings Linkable	Product Code
4W	11W	313mm	280lm	30	D2401
6W	14W	543mm	525lm	20	D2402
10W	23W	873mm	700lm	12	D2403
14W	37W	1173mm	980lm	8	D2404

Link Leads

Description	Length	Product Code
Link Connector	250mm	D250B
Link Connector	500mm	D500B
Link Connector	1000mm	D1000B



C Range T4 Linkable Lights



6-30W

IP20

Available Colour:



Interior

FEATURES

- Supplied with White (3400K) T4 lamp and diffuser
- Complete with 2m power lead and top or side mounting brackets
- Fittings are individually switched
- Flicker free quick start - non dimmable
- Maximum linkable of 120W in any combination
- Can be connected butt to butt or using link lead connectors
- Suitable for kitchens, cabinets and domestic display lighting - IP20
- Width: 23mm, height: 43mm
- 230V



Wattage	Fitting Length	Lamp Pin-to-Pin	Lamp Cap-to-Cap	Product Code	Replacement Lamp Code
6W	275mm	217mm	205mm	C21A	C31A
10W	424mm	366mm	354mm	C22A	C32A
16W	523mm	465mm	453mm	C23A	C33A
20W	620mm	565mm	553mm	C24A	C34A
25W	710mm	654mm	642mm	C25A	C35A
30W	821mm	763mm	751mm	C26A	C36A

Link Leads

Description	Length	Product Code
Link Connector	250mm	C27A
Link Connector	500mm	C28A

6-35W

IP20



Available Colour:



Interior



FEATURES

- Supplied with White (3400K) T5 lamp and diffuser
- Complete with 2m power lead and top or side mounting brackets
- Fittings are individually switched
- Flicker free quick start – non dimmable
- Maximum linkable of 320W in any combination
- Can be connected butt to butt or using link lead connectors
- Suitable for kitchens, cabinets and domestic display lighting – IP20
- Width: 23mm, height: 43mm
- 230V



Wattage	Fitting Length	Lamp Pin-to-Pin	Lamp Cap-to-Cap	Product Code
6W	268mm	225mm	213mm	D06A
8W	343mm	302mm	290mm	D08A
14W	605mm	561mm	549mm	D14A
21W	904mm	860mm	848mm	D21A
28W	1204mm	1161mm	1149mm	D28A
35W	1504mm	1462mm	1450mm	D35A

Link Leads

Description	Length	Product Code
Link Connector	250mm	D250A
Link Connector	500mm	D500A
Link Connector	1000mm	D1000A



Fireshield Mains Voltage
Fire Rated Downlights

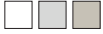
Brackenheath

35-50W

IP20

IP65

Available Colour:



Interior

FEATURES

- Requires aluminium reflector lamps
- Fire rated for 30, 60 & 90 minutes
- Twist & lock bezel
- Can be used with LED lamps
- Available in white, chrome and satin chrome finishes
- Fixed, tilt and bathroom options available
- Three way terminal block for easy termination of cable
- GU10 lampholder
- 230V



Wattage	Description	Finish	Lamp	Cut-out	Void Depth	IP Rating	Product Code
50W	Fixed	White	GU10	74mm	180mm	IP20	A2010WH
50W	Fixed	Chrome	GU10	74mm	180mm	IP20	A2010CH
50W	Fixed	Satin Chrome	GU10	74mm	180mm	IP20	A2010SC
50W	Tilt	White	GU10	82mm	180mm	IP20	A2011WH
50W	Tilt	Chrome	GU10	82mm	180mm	IP20	A2011CH
50W	Tilt	Satin Chrome	GU10	82mm	180mm	IP20	A2011SC
35W	Bathroom	White	GU10	74mm	195mm	IP65	A2012WH
35W	Bathroom	Chrome	GU10	74mm	195mm	IP65	A2012CH
35W	Bathroom	Satin Chrome	GU10	74mm	195mm	IP65	A2012SC

Desk Lamps





6W

USB

Available Colour:



FEATURES

- LED desk lamp – 6W
- Adjustable colour temperature
- Warm White 3000K - Daylight 6500K
- Dimmable via touch control interface
- Built in USB charging port ideal for charging phones and other digital devices
- Durable plastic housing
- Adjustable lamp arm
- 90° rotational lamp head
- Unique protected registered design
- Available in Black and White finishes
- Rated life of 30,000 hours
- 100-230V
- USB charging output interface
- Output voltage of DC5V
- Maximum output current of 1A, voltage security

Wireless Charging:



Wattage	Dimensions (mm)	Lumen output	Colour Temperature	Finish	Product Code
6W	232x140x325.5	360lm	3000K - 6500K	White	I7010W
6W	232x140x325.5	360lm	3000K - 6500K	Black	I7010B

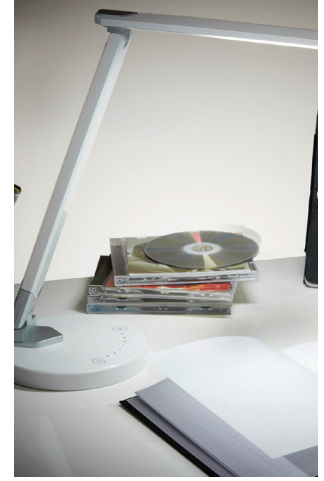
Light emitting height	Max LUX (LX)
20cm	2510
30cm	1030
40cm	650

Interior

Brackenhath *ispot* Blade

8W

USB



Available Colour:



Interior

FEATURES

- LED desk lamp – 8W
- Adjustable colour temperature
- Warm white 3000K - daylight 6500K
- Dimmable via touch control interface
- Built in USB charging port ideal for charging phones and other digital devices
- Durable plastic housing
- Power switch with night indicator light
- 180° adjustable lamp head
- 90° adjustable lamp arm
- Folds away for easy storage
- Unique protected registered design
- Available in black and white finishes
- Rated life of 30,000 hours
- 100-230V
- USB charging output interface
- Output voltage of DC5V
- Maximum output current of 1A, voltage security

Wireless Charging:



Wattage	Dimensions (mm)	Lumen output	Colour Temperature	Finish	Product Code
8W	270x140x330	480lm	3000K - 6500K	White	I7020W
8W	270x140x330	480lm	3000K - 6500K	Black	I7020B

Light emitting height	Max LUX (LX)
20cm	4100
30cm	2000
40cm	1050
50cm	690



10W

USB



Available Colour:



FEATURES

- LED desk lamp – 10W
- Adjustable colour temperature
- Warm white 3000K - daylight 6500K
- 5 stage dimming via touch control interface
- Wireless charging interface ideal for charging phones and other electrical devices
- Supplied with wireless charging adaptors for iPhone 5 onwards and micro USB
- USB charging port on rear
- 60 min automatic timer
- Integrated night light on lamp head
- Durable plastic housing
- Adjustable lamp arm and head
- Folds away for easy storage
- Unique protected registered design
- Available in black and white finishes
- Rated life of 30,000 hours

Wireless Charging:

- Wireless charging interface
- Output voltage of DC5V
- Maximum output current of 1A



Interior

Wattage	Lumen Output	Colour Temperature	Finish	Product Code
10W	700lm	3000K - 6500K	White	I7030W
10W	700lm	3000K - 6500K	Black	I7030B





10W

2ft

Available Colour:



Interior

FEATURES

- Shatterproof polycarbonate base with opal diffuser
- Daylight colour temperature – (6000K)
- Provides non-dazzling, good spread of light
- 10W 2ft LED
- 900 lumens (>90lm/W)
- 120° beam angle
- Available complete with 110V yellow and 230V grey weatherproof luminaire
- Suitable for outdoor use with a suitable IP rated luminaire
- LED tube incorporates ALL control gear inside tube housing
- Flicker free start – instant 100% light
- Rotating end caps allow light to be directed as required
- Single end power input for advanced safety
- Rated life of 30,000 hours
- 110V – 230V



Wattage	Description	Length	Product Code
1 x 10W	Single tube only	2ft	T8010
2 x 10W	Twin 110V complete fitting – yellow	2ft	CRL8010
2 x 10W	Twin 230V complete fitting – grey	2ft	CRL8011

22W

5ft



Available Colour:



Interior



FEATURES

- Shatterproof polycarbonate base with opal diffuser
- Daylight colour temperature – (6000K)
- Provides non-dazzling, good spread of light
- 22W 5ft LED tube
- 2000 lumens (>90lm/W)
- 120° beam angle
- Available complete with 110V yellow and 230V grey weatherproof luminaire
- Suitable for outdoor use with a suitable IP rated luminaire
- LED tube incorporates ALL control gear inside tube housing
- Flicker free start – instant 100% light
- Rotating end caps allow light to be directed as required
- Single end power input for advanced safety
- Rated life of 30,000 hours
- 110V – 230V



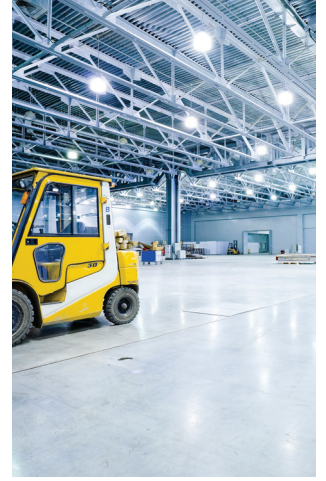
Wattage	Description	Length	Width	Product Code
1 x 22W	Single tube only	5ft	-	T8020
1 x 22W	Single 110V complete fitting - Yellow	5ft	85mm	CRL8020
1 x 22W	Single 230V complete fitting – Grey	5ft	85mm	CRL8120

LED360 Corn Lamps



30-60W

IP40



Interior

FEATURES

- High output Daylight (6000K) LED's
- 360° light output
- Integral driver
- Instant start and restart – can be used with PIR sensors
- Suitable for indoor applications with open fittings
- Rated life of 50,000 hours
- LED's rated to IP40
- 100-300V



Wattage	Replacement	Dimensions	Lamp Base	Beam Angle	Lumen Output	Product Code
30W	50W MH	90mmØ x 215mm	E27	360°	3450lm	R6050
40W	70W MH	90mmØ x 255mm	E40	360°	4600lm	R6060
60W	100W MH	90mmØ x 275mm	E40	360°	6900lm	R6070



80-120W

IP40



Interior

FEATURES

- High output Daylight (6000K) LED's
- 360° light output
- Integral driver
- Instant start and restart – can be used with PIR sensors
- Suitable for indoor applications with open fittings
- Rated life of 50,000 hours
- LED's rated to IP40
- 100-300V



Wattage	Replacement	Dimensions	Lamp Base	Beam Angle	Lumen Output	Product Code
80W	150W MH	105mmØ x 295mm	E40	360°	9200lm	R6080
100W	250W MH	105mmØ x 315mm	E40	360°	11500lm	R6090
120W	400W MH	112mmØ x 340mm	E40	360°	13800lm	R6100

7-30W

IP64



Interior

FEATURES

- High output Daylight (6500K) LED's
- 360° light output
- Integral driver
- Unique heat sink design for advanced heat dissipation
- Instant start and restart – can be used with PIR sensors
- Rated life of 50,000 hours
- LED's rated to IP64
- 100-277V

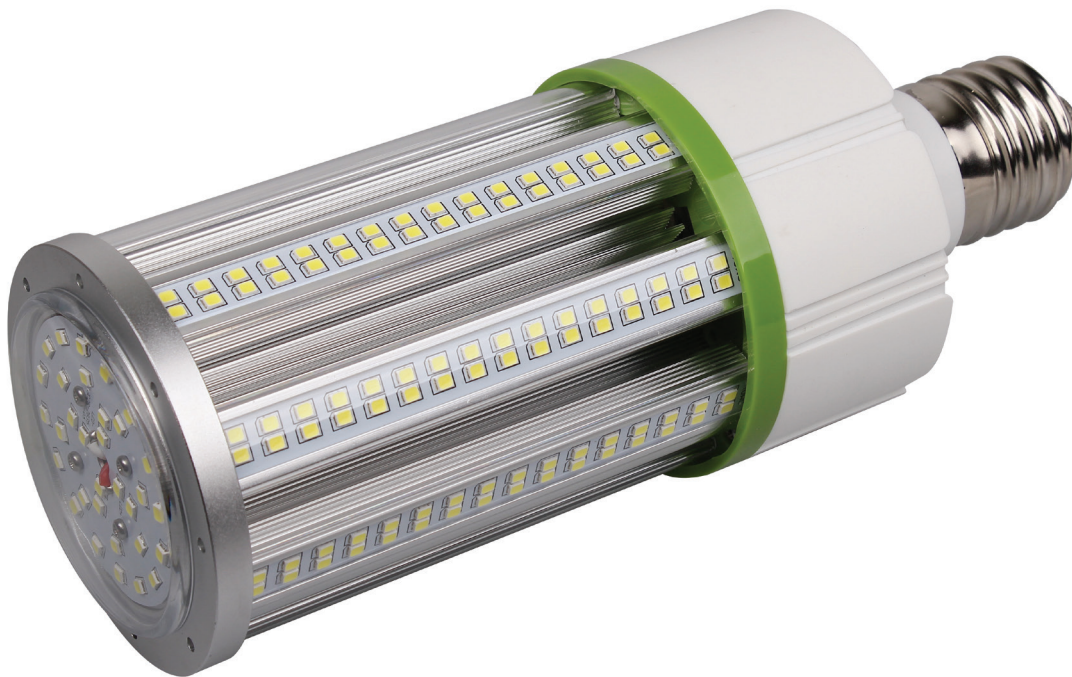


Wattage	Replacement	Dimensions	Lamp Base	Beam Angle	Lumen Output	Product Code
7W	60W GLS	45mmØ x 130mm	E27	360°	770lm	R7010
12W	100W GLS	45mmØ x 165mm	E27	360°	1320lm	R7020
20W	35W MH	70mmØ x 180mm	E27	360°	2200lm	R7030
30W	50W MH	93mmØ x 205mm	E27	360°	3300lm	R7040



40-120W

IP64



Interior

FEATURES

- High output Daylight (6500K) LED's
- 360° light output
- Integral driver
- Unique heat sink design for advanced heat dissipation
- Instant start and restart – can be used with PIR sensors
- Rated life of 50,000 hours
- LED's rated to IP64
- 100-277V



Wattage	Replacement	Dimensions	Lamp Base	Beam Angle	Lumen Output	Product Code
40W	70W MH	93mmØ x 237mm	E40	360°	4400lm	R7050
60W	100W MH	93mmØ x 289mm	E40	360°	6600lm	R7060
80W	150W MH	127mmØ x 270mm	E40	360°	8800lm	R7070
100W	250W MH	125mmØ x 290mm	E40	360°	11000lm	R7080
120W	400W MH	125mmØ x 310mm	E40	360°	13200lm	R7090

CONTENTS

ispot® LED Floodlights Non-PIR & PIR	30-31
ispot® R & RGB	32-33
ispot® SE LED Floodlights Non-PIR & PIR	34-35
ispot® C LED Floodlights	36
Knight Series LED Floodlights Non-PIR & PIR	37-39
Knight Series Industrial Floodlights	40
Tunnel Lights	41
Floodlight Accessories	43-50
ispot® Bulkheads	51-57
Garden Up and Down PIR Wall Light	59
Garden Up and Down/Single Wall Lights	60-61
Garden Spike Light	62
Halo Wall Light	64
LED Up and Down Wall Light	65
LED Sign Light	67

ispot® *Driverless Floodlights*



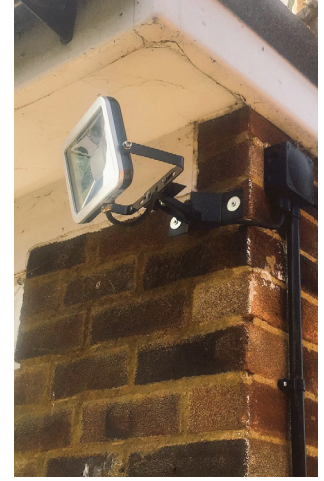
Removing the driver from the fitting reduces the level of heat generated and in turn reduces the level of energy required to power the fitting. This make the ispot driverless floodlights the number one choice for guaranteed cost savings.

Eco-friendly driverless LED Floodlights

Brackenheath ispot® Driverless LED Floodlight

10-50W

IP65



Available Colour:



FEATURES

- Innovative high voltage Nichia LED chips - no driver required
- Energy efficient super bright LED
- Daylight and warm white options
- 100-110° beam angle
- High quality toughened glass with attractive silver bezel
- Smart engineered mounting bracket allows the ispot to be rotated through 360°
- High grade aluminium and steel construction, including hex head bolts for additional security
- Available in black and white finishes
- Complete with mounting bracket and 900mm flex
- Rated life of 36,000 hours
- 230V
- IP65



Exterior

Wattage	Dimensions (mm)	Beam Angle	Lumen Output	Colour Temperature	Finish	Product Code
10W	152x130x25	105°	680lm	5700K	White	I1010W
10W	152x130x25	105°	680lm	5700K	Black	I1010B
10W	152x130x25	105°	640lm	3000K	White	I1011W
10W	152x130x25	105°	640lm	3000K	Black	I1011B
20W	213x180x28	100°	1500lm	5700K	White	I1020W
20W	213x180x28	100°	1500lm	5700K	Black	I1020B
20W	213x180x28	100°	1460lm	3000K	White	I1021W
20W	213x180x28	100°	1460lm	3000K	Black	I1021B
30W	275x265x38	110°	2100lm	5700K	White	I1030W
30W	275x265x38	110°	2100lm	5700K	Black	I1030B
30W	275x265x38	110°	2060lm	3000K	White	I1031W
30W	275x265x38	110°	2060lm	3000K	Black	I1031B
50W	275x265x38	105°	3500lm	5700K	White	I1040W
50W	275x265x38	105°	3500lm	5700K	Black	I1040B
50W	275x265x38	105°	3460lm	3000K	White	I1041W
50W	275x265x38	105°	3460lm	3000K	Black	I1041B



20-50W

IP65



Available Colour:



FEATURES

- Innovative high voltage Nichia LED chip – no driver required
- Energy efficient super bright LED
- Daylight and Warm White options
- 100-110° beam angle
- High grade aluminium body
- Available in black and white finishes
- Complete with mounting bracket and 900mm flex
- PIR detection distance 7m
- PIR detection range 120°
- PIR rated to IP65
- Adjustable hold time, sensitivity and lux level
- Built in daylight sensor
- Rated life of 36,000 hours
- 230V
- IP65

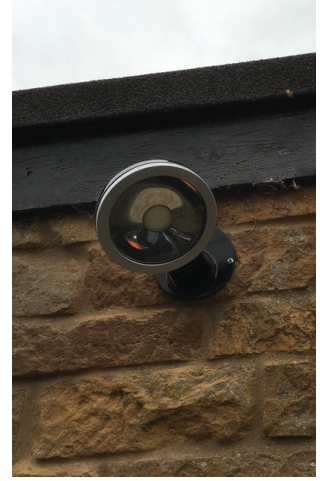


Exterior

Wattage	Dimensions (mm)	Beam Angle	Lumen Output	Colour Temperature	Finish	Product Code
20W	213x204x58	100°	1500lm	5700K	White	I1028W
20W	213x204x58	100°	1500lm	5700K	Black	I1028B
20W	213x204x58	100°	1460lm	3000K	White	I1029W
20W	213x204x58	100°	1460lm	3000K	Black	I1029B
30W	306x295x60	110°	2100lm	5700K	White	I1038W
30W	306x295x60	110°	2100lm	5700K	Black	I1038B
30W	306x295x60	110°	2060lm	3000K	White	I1039W
30W	306x295x60	110°	2060lm	3000K	Black	I1039B
50W	306x295x60	105°	3500lm	5700K	White	I1048W
50W	306x295x60	105°	3500lm	5700K	Black	I1048B
50W	306x295x60	105°	3460lm	3000K	White	I1049W
50W	306x295x60	105°	3460lm	3000K	Black	I1049B

10-20W

IP65



Available Colour:



Exterior

FEATURES

- Innovative high voltage LED chips – no driver required
- Energy efficient super bright LED
- Daylight colour temperature
- 120° beam angle
- High grade aluminium body
- Available in black and white finishes
- Attractive silver bezel
- Unique mounting bracket allows 360° orientation
- Rear cable entry improves the appearance as the cable is not visible once installed
- Complete with mounting bracket and 900mm flex
- Rated life of 36,000 hours
- 100-240V
- IP65



Wattage	Dimensions (mm)	Beam Angle	Lumen Output	Colour Temperature	Finish	Product Code
10W	133 x 50 x 176	120°	750lm	5700K	White	I3010W
10W	133 x 50 x 176	120°	750lm	5700K	Black	I3010B
20W	159 x 125 x 212	120°	1500lm	5700K	White	I3020W
20W	159 x 125 x 212	120°	1500lm	5700K	Black	I3020B



9-18W

IP65

Available Colour:



Exterior

FEATURES

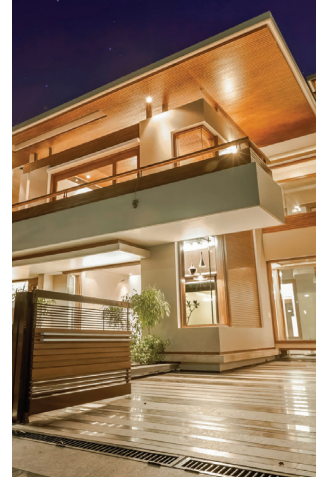
- Innovative high voltage LED chips – no driver required
- Energy efficient super bright RGB LED
- Colour changing with 13 different colours
- Includes remote control and last setting memory
- 4 different operating modes including flash and strobe
- Dimmable via remote control
- Multiple floodlights can be controlled by a single remote control
- 120° beam angle
- High grade aluminium body
- Available in black and white finishes
- Attractive silver bezel
- Remote radio frequency
- Suitable for indoor and outdoor use
- Complete with unique mounting bracket and 900mm flex
- Rated life of 36,000 hours
- 100-240V
- IP65



Wattage	Dimensions (mm)	Beam Angle	Colour Temp	Finish	Product Code
9W	133 x 50 x 176	120°	RGB	White	I3015W
9W	133 x 50 x 176	120°	RGB	Black	I3015B
18W	159 x 125 x 212	120°	RGB	White	I3025W
18W	159 x 125 x 212	120°	RGB	Black	I3025B

10-50W

IP66



Available Colour:



Exterior

FEATURES

- Unique ultra-thin, stylish design
- Energy efficient super bright SMD LED chip
- Daylight colour temperature (5000K)
- High grade aluminium body and polycarbonate diffuser
- Matte black housing
- Rear cable entry improves the appearance as flex is not visible once installed
- 110LM/W
- 120° beam angle
- Rated life of 50,000 hours
- 100-230V 50/60Hz
- IP66



Wattage	Dimensions (W x D x H mm)	Beam Angle	Colour Temp	Finish	Product Code
10W	145 x 118.5 x 32	120°	5000K	Black	ISE10B
20W	203 x 161 x 39	120°	5000K	Black	ISE20B
30W	261 x 269 x 39	120°	5000K	Black	ISE30B
50W	261 x 269 x 49	120°	5000K	Black	ISE40B



10-50W

IP66

Available Colour:



FEATURES

- Unique ultra-thin, stylish design
- Energy efficient super bright SMD LED chip
- Daylight colour temperature (5000K)
- High grade aluminium body and polycarbonate diffuser
- Matte black housing
- Rear cable entry improves the appearance as flex is not visible once installed
- 110LM/W
- 120° beam angle
- PIR detection distance 12m
- PIR detection range 90-120°
- PIR rated to IP66
- Rated life of 50,000 hours
- 100-230V 50/60Hz
- IP66

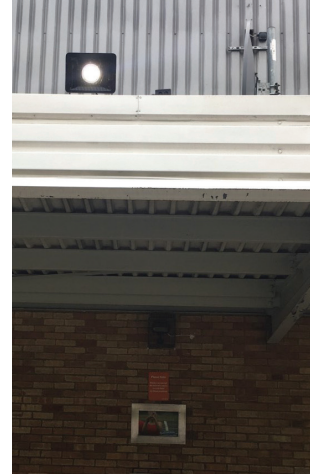


Exterior

Wattage	Dimensions (W x D x H mm)	Beam Angle	Colour Temp	Finish	Product Code
10W	145 x 118.5 x 32	120°	5000K	Black	ISE11B
20W	203 x 161 x 39	120°	5000K	Black	ISE21B
30W	261 x 269 x 39	120°	5000K	Black	ISE31B
50W	261 x 269 x 49	120°	5000K	Black	ISE41B

30-80W

IP65



Available Colour:



Exterior

FEATURES

- Innovative high voltage LED chips - no driver required
- Energy efficient super bright LED
- Daylight colour temperature -
- 70-140° beam angle
- High grade aluminium body
- Available in black and white finishes
- Attractive silver bezel
- Complete with mounting bracket and 900mm flex
- Distinctive domed lens provides optimum lumen output and beam angle up to 140°
- Rear cable entry improves the appearance as the flex is not visible once installed
- Rated life of 30,000 hours
- 230V
- IP65



Wattage	Dimensions (mm)	Beam Angle	Lumen Output	Colour Temperature	Finish	Product Code
30W	198x185x36	70°	2100lm	5700K	White	I2010W
30W	198x185x36	70°	2100lm	5700K	Black	I2010B
50W	270x240x48	120°	3500lm	5700K	White	I2020W
50W	270x240x48	120°	3500lm	5700K	Black	I2020B
80W	320x270x48	140°	5600lm	5700K	White	I2030W
80W	320x270x48	140°	5600lm	5700K	Black	I2030B



10-50W

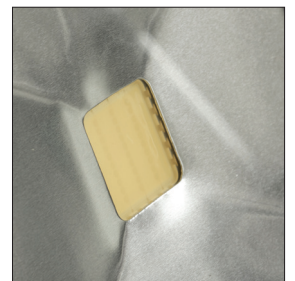
IP65

Available Colour:



FEATURES

- Energy efficient high output LED
- Daylight colour temperature (6000K)
- High grade aluminium and steel construction
- Hex head bolts for additional security
- Driver integrated into housing for slim line appearance
- Side cable entry improves the appearance as the cable is less visible when installed
- Enhanced heat sink for improved heat dissipation
- Black finish
- Rated life of 50,000 hours
- 85-265V 50Hz
- IP65



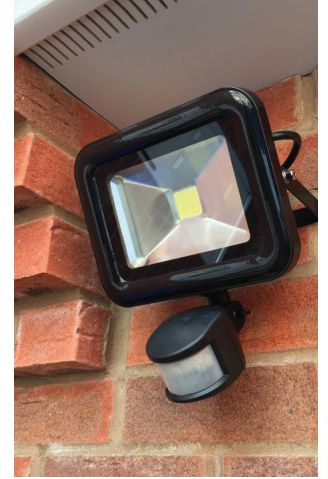
Exterior

Wattage	Dimensions mm (W x D x H)	Beam Angle	Lumen Output	Product Code
10W	145 x 58 x 118	120°	750lm	K7010B
20W	196 x 58 x 156	120°	1500lm	K7020B
30W	242 x 66 x 203	120°	2250lm	K7030B
50W	298 x 78 x 246	120°	3750lm	K7040B

Brackenheath Knight Series PIR

10-50W

IP65



Available Colour:



Exterior

FEATURES

- Energy efficient high output LED
- Daylight colour temperature (6000K)
- High grade aluminium and steel construction
- Hex head bolts for additional security
- Driver integrated into housing for slim line appearance
- Side cable entry improves the appearance as the cable is less visible when installed
- Enhanced heat sink for improved heat dissipation
- PIR beam angle 180°
- PIR detection distance 5 - 12m
- Adjustable PIR arm allows the PIR to be directed as required
- User friendly sensitivity, time and lux dials
- PIR rated to IP65
- Black finish
- Rated life of 50,000 hours
- 85-265V 50Hz
- IP65



Wattage	Dimensions mm (W x D x H)	Beam Angle	Lumen Output	Product Code
10W	145 x 58 x 220	120°	750lm	K7011B
20W	196 x 58 x 260	120°	1500lm	K7021B
30W	242 x 66 x 300	120°	2250lm	K7031B
50W	298 x 78 x 340	120°	3750lm	K7041B



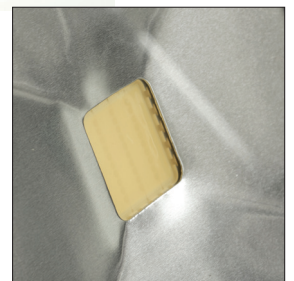
Knight Series Non-PIR

Brackenheath

70-100W

IP65

Available Colour:



Exterior

FEATURES

- Energy efficient high output LED
- Daylight colour temperature (6000K)
- High grade aluminium and steel construction
- Hex head bolts for additional security
- Driver integrated into housing for slim line appearance
- Side cable entry improves the appearance as the cable is less visible when installed
- Enhanced heat sink for improved heat dissipation
- Black finish
- Rated life of 50,000 hours
- 85-265V 50Hz
- IP65



Wattage	Dimensions mm (W x D x H)	Beam Angle	Lumen Output	Product Code
70W	328 x 98 x 275	120°	5250lm	K7050B
100W	328 x 98 x 275	120°	7500lm	K7060B

Brackenheath Knight Series Industrial

100-200W

IP65



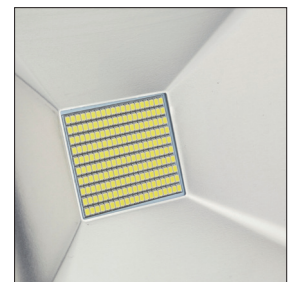
Available Colour:



Exterior

FEATURES

- Slim and compact design
- Energy efficient super bright SMD LED chip
- Flicker free quick start
- Daylight colour temperature (6000K)
- High grade aluminium body
- Toughened glass for high impact
- 70LM/W
- 110° beam angle
- Rated life of 30,000 hours
- 100-230V
- IP65



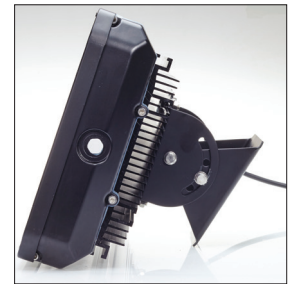
Wattage	Lumen Output	Replacement	Dimensions (L x W x D in mm)	Product Code
100W	7500lm	200W SON/MH	360 x 275 x 85	N6010
150W	10500lm	250W SON/MH	430 x 310 x 85	N6020
200W	15000lm	400W SON/MH	560 x 386 x 106	N6030

100-200W

IP65



Available Colour:



Exterior

FEATURES

- Energy efficient super bright LED – Daylight (6000K)
- Rated life of 50,000 hours
- Integral driver
- Complete with mounting bracket and 900mm flex
- Can be used as a floodlight and as a low bay fitting
- Die-cast aluminium housing
- Durable high quality paint – black finish
- IP65
- 110-230V



Wattage	Replacement	Dimensions (L x W x H)	Beam Angle	Lumen Output	Product Code
100W	250W SON/MH	367mm x 292mm x 224mm	120°	8500lm	N9010
140W	350W SON/MH	610mm x 292mm x 224mm	120°	12500lm	N9020
160W	400W SON/MH	610mm x 292mm x 224mm	120°	14200lm	N9030
200W	450W SON/MH	690mm x 292mm x 158mm	120°	18000lm	N9040

Floodlight Accessories



The Brackenheath range of accessories have been adapted to complement our **ispot® driverless floodlights** and also our **Knight Series LED floodlights**. The Brackenheath accessories can also be used with other fittings if required.



Available Colour:



FEATURES

- Firm plastic construction
- Durable high quality black paint
- Available in two different sizes
- The ispot spike small is suitable for use with the ispot 10W, ispot R 10W and ispot RGB 9W
- The ispot spike large is suitable for use with the ispot 20W, ispot R 20W and ispot RGB 18W
- Can be used with alternative LED floodlights with appropriate bracket fixings



Description	Movement	Length (mm)	Finish	Product Code
ispot universal spike small	Fixed	219.3	Black	I1000B
ispot universal spike large	Fixed	242.3	Black	I2000B



Exterior

FEATURES

- Iron construction
- Durable high quality black paint
- Suitable for use with the ispot 10W and 20W floodlights
- Ideal for use in sign lighting applications
- Arm length 390mm
- Wall bracket has 4 fixing holes
- Bracket to mount product has 2 fixing points



Description	Movement	Length (mm)	Finish	Product Code
ispot Extension Pole	Fixed	390mm	Black	I5000B



Available Colour:



Exterior

FEATURES

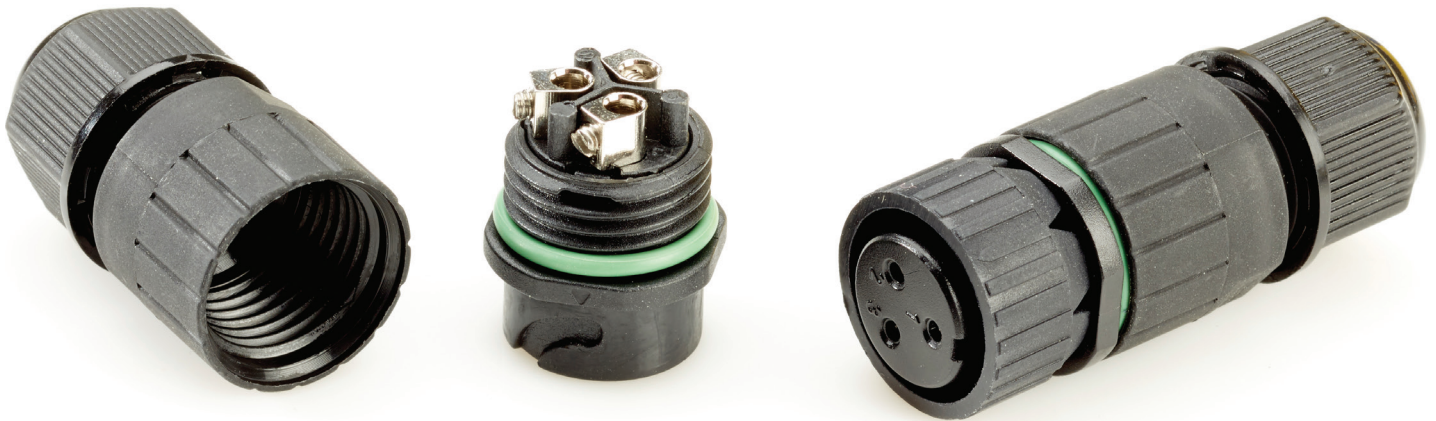
- Steel construction
- Brackets have durable high quality black paint
- Spike is zinc coated
- Suitable for use with LED floodlights (up to 30W), CFL floodlights and die-cast halogen floodlights
- Floodlight spike compatible with use on the ispot 10W
- Swivel wall bracket Can be used with the Knight Series 10W & 30W
- Bracket fixings 48-75mm



Description	Movement	Length	Product Code
Swivel Corner Bracket	270°	75mm	BTHB2
Swivel Wall Bracket	180°	75mm	BTHB3
Floodlight Spike	Fixed	310mm	BTHB5



Available Colour:



Exterior

FEATURES

- Internal and external cable connector
- Suitable for cable ducts and external connectors for lighting, garden pumps etc.
- Not suitable for submerging when using mains power
- Ideal for use with the ispot and Knight Series ranges
- Will fit into 3/4" metal conduit and all other larger sizes
- Durable construction over 100 plug/unplug cycles
- Flame retardant nylon housing
- Nickel plated
- IP67



Description	Ampage	Cable Diameter	Finish	Product Code
3 pole plug and socket	16A	17Ømm	Black	I4000B



Available Colour:



Exterior

FEATURES

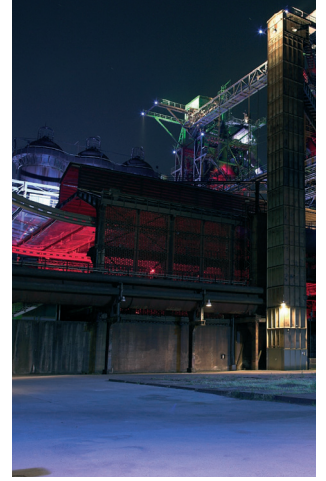
- Electronic detector for dawn/dusk switching
- Suitable for use within a luminaire
- 70 lux switching point (on/off)
- Available as single unit or with remote head
- UV stabilised cover
- IP65
- 230V



Wattage	Description	Brand	Dimensions (L x W x H)	Lens Cutout	Product Code
2000W	Miniature Photocell	Royce Thompson	57mm x 31mm x 25mm	20mmØ	PS41
1000W	Miniature Photocell	Brackenheath	52.5mm x 42mm x 29mm	16mmØ	N2011
2000W	Two Part Photocell	Royce Thompson	57mm x 31mm x 25mm	20mmØ	PS41R
1000W	Two Part Photocell	Brackenheath	45mm x 45mm x 30mm	16mmØ	N2012

1000-2000W

IP65



Exterior

FEATURES

- Electronic detector for dawn/dusk switching
- Stand-alone photocell kit
- 70 lux switch on, 105 lux switch off
- Photocell head and base available separately
- UV stabilised cover
- IP65
- 230V



Wattage	Description	Brand	Product Code
2000W	Full Kit	Royce Thompson	PS20
1000W	Full Kit	Brackenheath	N2013
2000W	Head Only	Royce Thompson	PS21
1000W	Head Only	Brackenheath	N2014



Mini Passive Infra-Red Sensor | **Brackenheath**

2000W

IP44

Available Colour:



Exterior

FEATURES

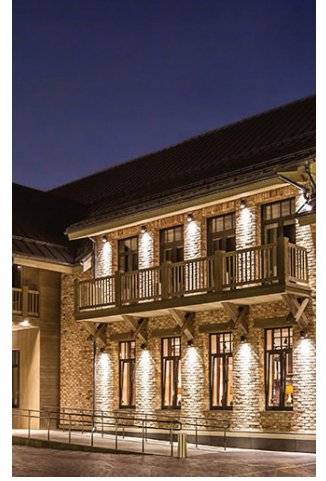
- Senses movement and presence of people
- Available in white or black finish
- Wall or ceiling mounted
- Detection distance up to 12m
- Detection range up to 180°
- Manual override
- Max load 2000W
- Adjustable time and lux controls
- IP44
- 110-230V



Wattage	Colour	Product Code
2000W	White	BPW4W
2000W	Black	BPW4B

1200W

IP44



Available Colour:



Exterior



- Senses movement and presence of people
- Available in white or black finish
- Wall or ceiling mounted
- Detection distance up to 12m
- Detection range up to 180°
- Manual override
- IP44
- 230V



Wattage	Colour	Product Code
1200W	White	BPW3W
1200W	Black	BPW3B

ispot® *Driverless Bulkheads*



Whether your lighting requirement is an **external wall, stairwell, corridor or communal area**, Brackenheaths **ispot® driverless LED bulkhead light fixtures** offer the right solution for you.

10-20W

IP54



Available Colour:



Exterior

FEATURES

- Innovative high voltage Nichia LED chip – no driver required
- Energy efficient super bright LED
- Daylight and warm white options
- High grade aluminium body and polycarbonate diffuser
- Impact resistant
- PIR detection range 90°
- PIR detection distance 4m
- PIR has a hold time of 120 seconds (non-adjustable)
- PIR Lux level – 70 lux
- No visible screws on front – Tamper proof screws on back
- Available in black and white finishes
- Rated life of 30,000 hours
- 100-230V
- IP54



Wattage	Dimensions (LxHxD mm)	Beam Angle	Lumen Output	Colour Temperature	PIR	Finish	Product Code
10W	220x130x36	110°	600lm	5700K	Yes	White	I9018W
10W	220x130x36	110°	600lm	5700K	Yes	Black	I9018B
10W	220x130x36	110°	600lm	3000K	Yes	White	I9019W
10W	220x130x36	110°	600lm	3000K	Yes	Black	I9019B
20W	220x130x36	110°	1200lm	5700K	Yes	White	I9028W
20W	220x130x36	110°	1200lm	5700K	Yes	Black	I9028B
20W	220x130x36	110°	1200lm	3000K	Yes	White	I9029W
20W	220x130x36	110°	1200lm	3000K	Yes	Black	I9029B



ispot® Lozenge Non-PIR

Brackenheath

10-20W

IP54

Available Colour:



Exterior

FEATURES

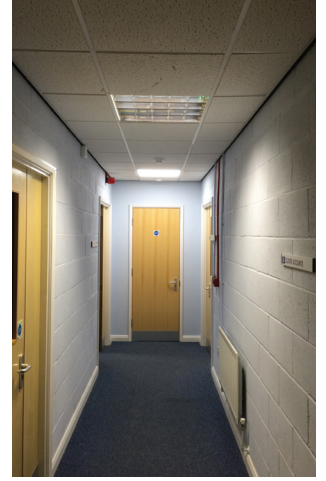
- Innovative high voltage Nichia LED chip – no driver required
- Energy efficient super bright LED
- Daylight and warm white options
- High grade aluminium body and polycarbonate diffuser
- Impact resistant
- No visible screws on front – Tamper proof screws on back
- Side cut outs allow for surface clipped supply cable to enter and exit the sides of the bulkheads whilst maintaining a flush mounting
- Available in black and white finishes
- Rated life of 30,000 hours
- 220-240V
- IP54



Wattage	Dimensions (LxHxD mm)	Beam Angle	Lumen Output	Colour Temperature	PIR	Finish	Product Code
10W	220x130x36	110°	600lm	5700K	No	White	I9010W
10W	220x130x36	110°	600lm	5700K	No	Black	I9010B
10W	220x130x36	110°	600lm	3000K	No	White	I9011W
10W	220x130x36	110°	600lm	3000K	No	Black	I9011B
20W	220x130x36	110°	1200lm	5700K	No	White	I9020W
20W	220x130x36	110°	1200lm	5700K	No	Black	I9020B
20W	220x130x36	110°	1200lm	3000K	No	White	I9021W
20W	220x130x36	110°	1200lm	3000K	No	Black	I9021B

10W

IP54



Available Colour:



Exterior

FEATURES

- Innovative high voltage LED chip – no driver required
- Energy efficient super bright Nichia LED
- Daylight – 5700K
- High grade aluminium body and polycarbonate diffuser
- Impact resistant
- No visible screws on front – Tamper proof screws on back
- 3 hour emergency duration
- Bulkhead will dim to 2W during emergency function
- Rated life of 30,000 hours
- 110-240V
- IP54



Wattage	Dimensions (LxHxD mm)	Beam Angle	Lumen Output	Colour Temperature	Emergency	Finish	Product Code
10W	220x130x36	120°	600lm	5700K	3 hours	White	I9101WE

10-20W

IP54



Available Colour:



FEATURES

- Innovative high voltage Nichia LED chip – no driver required
- Energy efficient super bright LED
- Available in daylight and warm white colour temperatures
- High grade aluminium body and polycarbonate diffuser
- Impact resistant
- No visible screws on front – Tamper proof screws on back
- Quick fix installation bracket
- Flush mounted
- Side cut outs to allow ease when linking more than one bulkhead
- 55LM/W
- 110° beam angle
- Loop in/loop out connection
- Available in black and white finishes
- Rated life of 30,000 hours
- 230V 50/60Hz
- IP54



Wattage	Dimensions (LxHxD mm)	Beam Angle	Lumen Output	Colour Temperature	Finish	Product Code
10W	180x180x36	110°	550lm	5700K	White	I6010W
10W	180x180x36	110°	550lm	5700K	Black	I6010B
10W	180x180x36	110°	550lm	3000K	White	I6011W
10W	180x180x36	110°	550lm	3000K	Black	I6011B
20W	180x180x36	110°	1100lm	5700K	White	I6020W
20W	180x180x36	110°	1100lm	5700K	Black	I6020B
20W	180x180x36	110°	1100lm	3000K	White	I6021W
20W	180x180x36	110°	1100lm	3000K	Black	I6021B



Exterior

10-20W

IP54



Available Colour:



Exterior

FEATURES

- Innovative high voltage LED chip – no driver required
- Energy efficient super bright Nichia LED chip
- Available in daylight and warm white colour temperatures
- High grade aluminium body and polycarbonate diffuser
- Impact resistant
- No visible screws on front – Tamper proof screws on back
- Quick fix installation bracket
- Flush mounted
- Loop in/loop out connection
- Side cut outs to allow ease when linking more than one bulkhead
- 55LM/W
- 110° beam angle
- Available in black and white finishes
- Rated life of 30,000 hours
- 230V 50/60Hz
- IP54



Wattage	Dimensions (LxHxD mm)	Beam Angle	Lumen Output	Colour Temperature	Finish	Product Code
10W	140 x 140 x 36	110°	550lm	5700K	White	I8010W
10W	140 x 140 x 36	110°	550lm	5700K	Black	I8010B
10W	140 x 140 x 36	110°	550lm	3000K	White	I8011W
10W	140 x 140 x 36	110°	550lm	3000K	Black	I8011B
20W	160 x 160 x 36	110°	1100lm	5700K	White	I8020W
20W	160 x 160 x 36	110°	1100lm	5700K	Black	I8020B
20W	160 x 160 x 36	110°	1100lm	3000K	White	I8021W
20W	160 x 160 x 36	110°	1100lm	3000K	Black	I8021B

20W

IP54



Available Colour:



FEATURES

- Innovative high voltage LED chip – no driver required
- Energy efficient super bright LED
- Available in daylight and warm white colour temperatures
- High grade aluminium body and polycarbonate diffuser
- Impact resistant
- No visible screws on front – Tamper proof screws on back
- Quick fix installation bracket
- Flush mounted
- Loop in/loop out connections
- Side cut outs to allow ease when linking more than one bulkhead
- 55LM/W
- 110° beam angle
- Available in black and white finishes
- Rated life of 30,000 hours
- 230V 50/60Hz
- IP54



Wattage	Dimensions (LxHxD mm)	Beam Angle	Lumen Output	Colour Temperature	Finish	Product Code
20W	180 x 180 x 40	110°	1100lm	5700K	White	I5020W
20W	180 x 180 x 40	110°	1100lm	5700K	Black	I5020B
20W	180 x 180 x 40	110°	1100lm	3000K	White	I5021W
20W	180 x 180 x 40	110°	1100lm	3000K	Black	I5021B

Exterior



Brackenheath have adapted a variety of **garden lighting** to include **wall lighting**, **spike lighting** and **brick lighting** suitable for all domestic applications.



Up and Down PIR Wall Light | **Brackenheath**

35W

IP44

Available Colour:



FEATURES

- Stainless steel construction
- GU10 lamp holder
- Toughened glass lens
- Supplied without lamp
- Suitable for use with halogen, long body CFL and LED lamps
- Adjustable PIR hold time, lux and sensitivity controls
- PIR detection distance 110°
- PIR detection range 8m
- Manual override facility
- IP44



Wattage	Dimensions (L x W)	Product Code
35W	215mm x 68mm	GF625



Exterior

50W

IP65



Available Colour:



Exterior



- Two GU10 lampholders
- Suitable for use with halogen and long body CFL and LED lamps
- Toughened glass lens
- Requires an earth
- IP65
- 230V



Wattage	Dimensions (L x W x D)	Product Code
50W	200mm x 75mm x 90mm	GF622



Stainless Steel Single Wall Lights



50W

IP65

Available Colour:



Exterior

FEATURES

- GU10 lampholder
- Available in fixed and adjustable versions
- Suitable for use with halogen and long body CFL and LED lamps
- Toughened glass lens
- Supplied less lamp
- IP65
- 230V

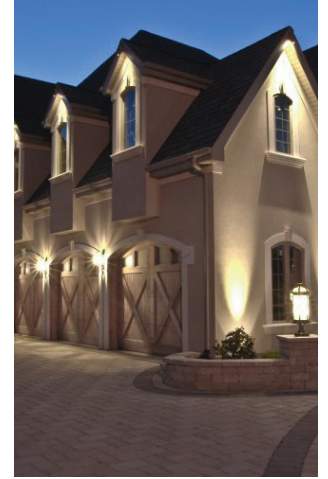


Wattage	Description	Dimensions (L x W x D)	Product Code
50W	Fixed	140mm x 75mm x 90mm	GF621
50W	Adjustable	165mm x 75mm x 90mm	GF623

Brackenheath | Stainless Steel Garden Light

50W

IP65



Available Colour:



Exterior



- GU10 lampholder
- Complete with spike and 2m lead
- Spike length 200mm
- Suitable for use with halogen and long body CFL and LED lamps
- Toughened glass lens
- IP65
- 230V



Wattage	Dimensions (L x W x D)	Spike Length	Product Code
50W	60mmØ x 115mm	200mm	GF624

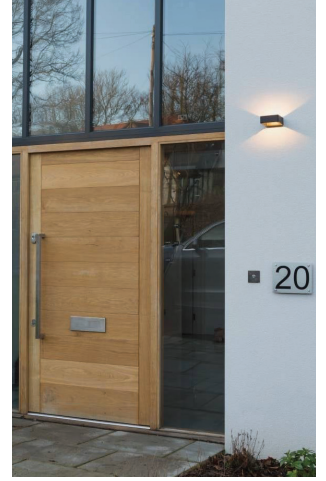
Wall Lights



Brackenheath | Halo LED Wall Light

5W

IP54



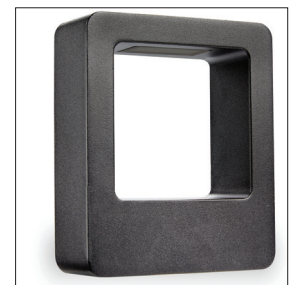
Available Colour:



Exterior

FEATURES

- LED 1 x 5W wall light
- High grade aluminium housing
- Warm white (3000K)
- Super bright LED - 178lm
- Beam angle 120°
- Rated life of 50,000 hours
- Suitable for indoor and outdoor use
- Available in black and white finishes
- 230V 50/60Hz
- IP54



Wattage	Dimensions	Colour	Product Code
5W	145 x 120 x 45	White	H6010W
5W	145 x 120 x 45	Black	H6010B



LED Up and Down Wall Light | **Brackenheath**

2W

IP54

Available Colour:



Exterior

FEATURES

- LED 2 x 1W wall light
- Die-cast aluminium housing with polycarbonate diffuser
- 3000K colour temperature
- 75lm/W - 150lm
- Integral driver
- 60° beam angle
- Rear cable entry
- Available in black and white finishes
- 50,000 hours rated life
- 240V 50Hz
- IP54



Wattage	Dimensions (L x D x W mm)	Colour	Product Code
2 x 1W	170 x 48 x 83	White	H7010W
2 x 1W	170 x 48 x 83	Black	H7010B

LED Sign Light

Brackenheath



LED Sign Light

- Energy efficient LED sign light – 30W
- Precise light distribution
- Cool white (4000K)
- 80lm/W - 2500lm
- 35,000 hours rated life
- IP65

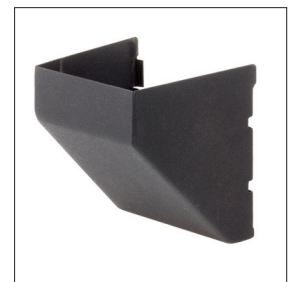
Designed for a range of applications including billboards, facades, panels and roadway signage.



30W

IP65

Available Colour:



Exterior

FEATURES

- Energy saving LED sign light – 30W
- Cool white (4000K)
- Precise light distribution
- Oval flood/ Asymmetric light 60°x 150°.
- Driver integrated into housing
- Aluminium die-cast housing
- Mounting bracket and pole sold separately
- 80lm/W - 2500lm
- 35,000 hours rated life
- IP65
- 220-240V 50/60Hz



Description	Product Code
30W LED sign light	N4010
Sign light bracket	N4011
Bracket & mounting pole for sign light	N4012

Emergency Lighting



Emergency lighting is designed for use in an **emergency** situation where the main power supply fails and the normal lighting no longer operates. The loss of mains power could be the result of a **fire** or a **power cut**, at which point the **emergency lighting** utilises a back-up battery as a power source to provide sufficient illumination to allow safe passage during evacuation of the premises.



10W

IP54

Available Colour:



FEATURES

- Innovative high voltage LED chip – no driver required
- Energy efficient super bright Nichia LED
- Daylight – 5700K
- High grade aluminium body and polycarbonate diffuser
- Impact resistant
- No visible screws on front – Tamper proof screws on back
- 3 hour emergency duration
- Bulkhead will dim to 2W during emergency function
- Rated life of 30,000 hours
- 110-240V
- IP54



Wattage	Dimensions (LxHxD mm)	Beam Angle	Lumen Output	Colour Temperature	Emergency	Finish	Product Code
10W	220x130x36	120°	600lm	5700K	3 hours	White	I9101WE

10W

IP54



Available Colour:



FEATURES

- Innovative high voltage LED chip – no driver required
- Energy efficient super bright Nichia LED chip
- Available in daylight – 5700K
- High grade aluminium body and polycarbonate diffuser
- Impact resistant
- No visible screws on front – Tamper proof screws on back
- 60LM/W
- 3 hour EM duration
- Green LED indicator
- Supplied with running legend going up
- Legend kit available separately
- Available in a white finish
- Rated life of 30,000 hours
- 100-240V 50/60Hz
- IP54



Wattage	Dimensions (LxHxD mm)	Beam Angle	Lumen Output	Colour Temperature	Emergency	Finish	Product Code
10W	220x130x36	120°	600lm	5700K	3 hours	White	I9201WE

Description	Product Code
Legend Kit	I90LKIT



Available Colour:



FEATURES

- Super bright 12pcs LED
- Impact resistant polycarbonate base and diffuser
- Ni-Cad batteries
- Includes legend kit with running man left, right and separate arrow
- 3 hour emergency duration
- Supplied maintained and can be wired non-maintained
- 40lm/W – 120lm
- IP65
- 230V



Wattage	Emergency	Dimensions (W x L x H)	Product Code
3W	3 hours	117mm x 350mm x 76mm	E9301

Brackenheath | LED Emergency Exit Box

3W

IP20



Available Colour:



FEATURES

- Super bright 12pcs LED
- Durable steel body with polycarbonate screen
- Ni-Cad batteries
- Supplied with running legend and arrow pointing up
- 3 hour emergency duration
- Supplied maintained and can be wired non-maintained
- 40lm/W - 120lm
- IP20
- 230V



Wattage	Emergency	Dimensions (W x L x H)	Product Code
3W	3 hours	395 x 191mm x 65mm	E9101



LED Twin Spot | **Brackenheath**

2 x 7.5W

IP65

Available Colour:



FEATURES

- Super bright 2 x 7.5W LED – White (3500K)
- Durable polycarbonate body with adjustable heads
- Fault indicator lights on side of fitting
 - Lamp head 1 – orange
 - Lamp head 2 – orange
 - Power/charge – green
- Inbuilt sounder to indicate failure
- Automatic self-test function
- Push test switch located on side of fitting
- Can be wired maintained
- Supplied non-maintained
- 3 hour emergency duration
- 470lm
- IP65
- 230V



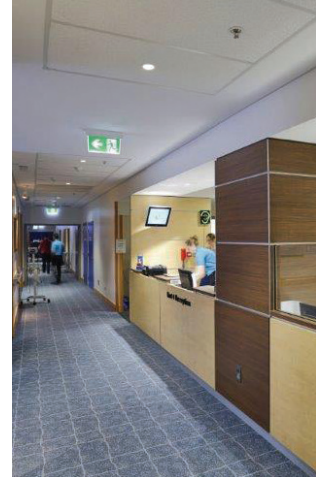
Wattage	Emergency	Dimensions (W x L x H)	Lumen Output	Product Code
2 x 7.5W	3 hours	296mm x 272mm x 75mm	470lm	E9201



Brackenheath | LED Mini Spot

3W

IP20



Available Colour:



FEATURES

- Mini spot light with separate driver and battery pack
- 1 x 3W Epistar LED – 103lm
- Polycarbonate body with aluminium bezel
- Choice of 2 bezels (white or silver)
- LED fitting dimensions Diameter: 42mm H: 21mm Cut Out 35mm
- Ni-Cad batteries
- Non-maintained only
- Recessed ceiling mounted
- Green indicator light for power/charge
- 3 hours emergency duration
- IP20
- 230V



Wattage	Emergency	Diameter	Lumen Output	Product Code
3W	3 hours	42Ømm	103lm	E9500



FEATURES

- 16pcs LED – White (3500K)
- Polycarbonate frame and PVC legend
- Ni-cad batteries
- Supplied with complete legend kit
- 3 hour emergency duration
- Supplied maintained
- Green power LED indicator
- Visible up to 24m
- Discreet appearance, only 51mm deep
- IP20
- 230V



Wattage	Emergency	Dimensions (LxHxD mm)	Product Code
3W	3 hours	380 x 195 x 51	E9400



IP20



Available Colour:



FEATURES

- Over door alarm indicator and sounder
- Main control panel
- Remote reset panel
- Ceiling pull cord alarm switch
- Self-adhesive disabled WC sticker
- Inactive sticker
- 9V battery
- IP20
- 230V



Product Code

B1000

Main panel

Power – Red LED
 Fault – Orange LED indicates wiring fault or damaged cable
 Alarm – Flashing blue LED indicating pull cord switch has been activated
 Call answered – Green LED indicating call answered button has been pressed

Remote panel

Alarm – Flashing blue LED indicating pull cord switch has been activated
 Call answered – Green LED indicating call answered button has been pressed

Over door alarm

Alarm – Flashing blue LED indicating pull cord switch has been activated



10W

2ft

Available Colour:



FEATURES

- Shatterproof polycarbonate base with opal diffuser
- Daylight colour temperature – (6000K)
- Provides non-dazzling, good spread of light
- 10W 2ft LED Emergency tube
- 900 lumens (>90lm/W)
- 3 hour emergency duration
- 120° beam angle
- Suitable for outdoor use with a suitable IP rated luminaire
- Maintenance free –removes requirement to service EM inverter, batteries and lamps separately
- Output of 200 lumens in emergency mode
- Available complete with 110V yellow and 230V grey weatherproof luminaires
- Single end power input for advanced safety
- Inbuilt batteries with unique two switch system to disable EM function
- Rated life of 30,000 hours
- 110V – 230V



Wattage	Description	Emergency	Length	Product Code
1 x 10W	Single emergency tube only	3 hours	2ft	T8011
2 x 10W	Twin 110V complete fitting – yellow	3 hours	2ft	CRL8011
2 x 10W	Twin 110V complete fitting – grey	3 hours	2ft	CRL8111

Brackenheath Tube+ Emergency

22W

5ft



Available Colour:



FEATURES

- Shatterproof polycarbonate base with opal diffuser
- Daylight colour temperature - (6000K)
- Provides non-dazzling, good spread of light
- 5ft LED Emergency tube
- 2000 lumens (>90lm/W)
- 3 hour emergency duration
- 120° beam angle
- Suitable for outdoor use with a suitable IP rated luminaire
- Maintenance free -removes requirement to service EM inverter, batteries and lamps separately
- Output of 200 lumens in emergency mode
- Available complete with 110V yellow and 230V grey weatherproof luminaires
- Single end power input for advanced safety
- Inbuilt batteries with unique two switch system to disable EM function
- Rated life of 30,000 hours
- 110V - 230V



Wattage	Description	Emergency	Length	Width	Product Code
1 x 22W	Single emergency tube only	3 hours	5ft	-	T8021
1 x 22W	Single 110V complete fitting - Yellow	3 hours	5ft	85mm	CRL8021
1 x 22W	Single 230V complete fitting - Grey	3 hours	5ft	85mm	CRL8121

Beam angle The beam angle of an LED bulb or lamp is defined as the angle at which light is emitted from a given light source. A more technical definition specifies it as the angle between those points on either side of the beam axis where intensity decreases to approximately half of its maximum illumination.

Colour temperature Colour temperature has been described most simply as a method of describing the colour characteristics of light, usually either warm (yellowish) or cool (bluish), and measuring it in degrees of Kelvin (°K). 2700k – Extra Warm White, 3000K – Warm White, 3500K – White, 4000K – Cool White, 6000K – Daylight.

Emergency Lighting An emergency light is a battery-backed lighting device that switches on automatically when a building experiences a power outage. Emergency lights are standard in new commercial and high occupancy residential buildings.

Emergency lighting testing Tests on emergency lighting applications should be carried out periodically to ensure the luminaire is functioning correctly. The testing should be recorded in a log book and should follow the schedule of:

- Daily Visual check, ensure the indicator is illuminated
- Monthly A functional test, ensure the luminaire operates when the power supply is disconnected
- Annually As per monthly test but for the full rated duration of the luminaire

Kelvin The kelvin (abbreviation K), less commonly called the degree Kelvin (symbol, °K), is the Standard International (SI) unit of thermodynamic temperature most commonly used to measure colour temperature.

LED Light-emitting diode: a semiconductor diode that emits light when conducting current and is used in electronic equipment.

Lumens The SI unit of luminous flux, equal to the amount of light emitted per second in a unit.

Maintained A maintained luminaire is designed to be lit continuously and will continue to work even in the event of a power failure. This allows the unit to double as a standard light fitting but still supply the necessary backup in the event of a power outage.

Microwave Sensor Microwave sensors transmit an inaudible microwave and monitor reflections from walls or objects in the room irrespective of heat or light. Line of sight issues do not affect microwave sensors as any movement of solid objects changes the pattern of the reflections and activates the sensor.

Non-Maintained Non-maintained is a luminaire intended solely for emergency use. This means that the lamp within the luminaire is lit only ever in the event of a mains failure, which means the luminaire is linked into the building's lighting circuitry. This is most common in bulkhead and twin spot fittings and is mostly found in the workplace, such as offices and factories, where people are familiar with the escape routes.

Photocell An electrical device that produces a current or a voltage when light shines on it.

PIR A passive infrared sensor (PIR sensor) is an electronic sensor that measures infrared (IR) light radiating from objects in its field of view. They are most often used in PIR-based motion detectors.



IP Ratings

First Digit (intrusion protection)	
0	No special protection
1	Protection from a large part of the body such as a hand (but no protection from deliberate access); from solid objects greater than 50mm in diameter.
2	Protection against fingers or other object not greater than 80mm in length and 12mm in diameter.
3	Protection from entry by tools, wires etc, with a diameter of 2.5 mm or more.
4	Protection against solid bodies larger than 1mm (eg fine tools/small etc).
5	Protected against dust that may harm equipment.
6	Totally dust tight.
Second Digit (moisture protection)	
0	No protection.
1	Protection against condensation.
2	Protection against water droplets deflected up to 15° from vertical
3	Protected against spray up to 60° from vertical.
4	Protected against water spray from all directions.
5	Protection against low pressure water jets (all directions)
6	Protection against string water jets and waves.
7	Protected against temporary immersion.
8	Protected against prolonged effects of immersion under pressure.

Speak to the team about the various options of POS available with selected stock profiles



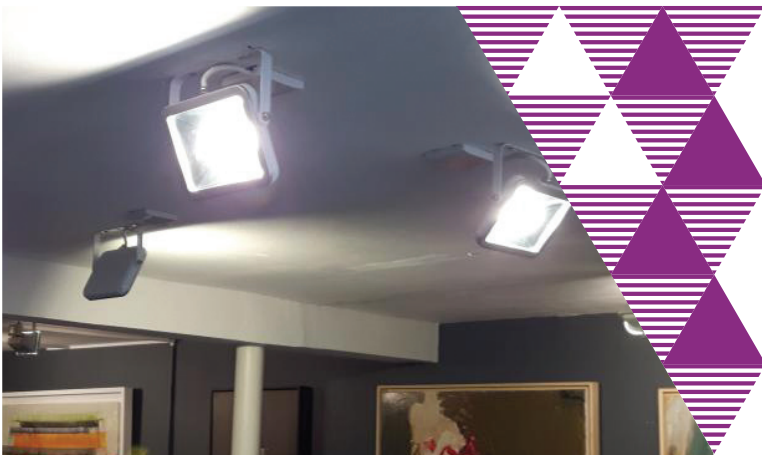
Bulkhead Profile

Working display units are supplied with ispot® Bulkhead profiles to allow for the advertisement of the full range of products in the trade counter area.



ispot® Profile

Slat wall boards are supplied with ispot profiles to give wholesalers the ability to keep all the stock visible in the trade counter, this helps maximise free space in the stock room. Boards can be tailored upon request.



JP Art Gallery

JP Art gallery were looking for a unique but effective way to light up the latest additions to the gallery. The ispot® was chosen because of its unique, ultra-thin stylish design and impressive light output. The ispot® incorporates innovative high voltage LED chips. These high voltage LED chips mean the ispot® doesn't require a driver therefore reducing the level of heat generated whilst increasing efficiency and reliability.



Valley Wholesale Carpets

Valley wholesale carpets were looking for an efficient but cost effective way to light the warehouse at their head office quarters in Kent. The lighting needed to be super bright daylight colour temperature and exhume a significant lumen output in order to cover every inch of the warehouse.

Valley wholesale carpets chose to acquire the 120W IP40 LED360 lamps to complete their project. The lamps have a 360° light output with an integral driver and IP40 rated LEDs.



Lion Yard Shopping Centre

When it came to upgrading the canopy lighting in the 'Lion Yard' shopping centre Cambridge there was only one possibility, the ispot® LED driverless floodlight. The ispot® was chosen because of its unique, ultra-thin stylish design and impressive light output.



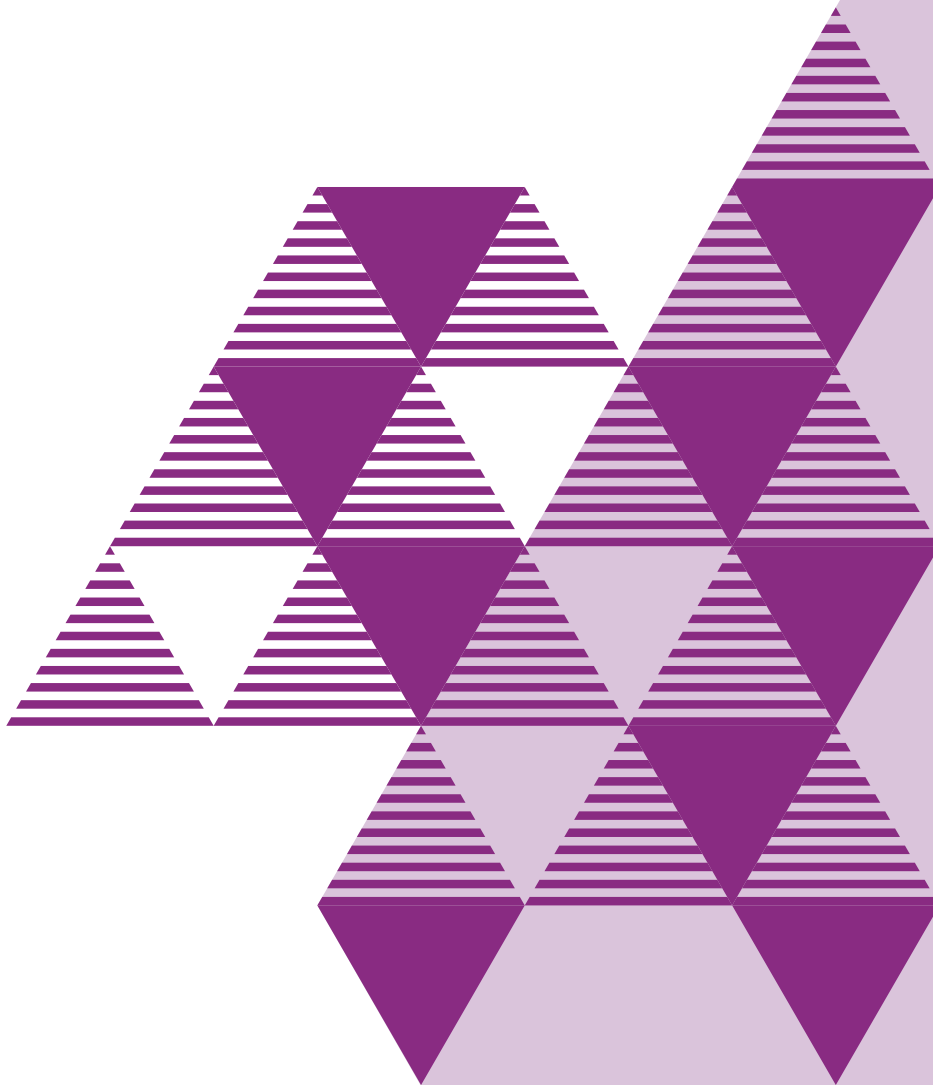
Lucky Man Set

The Brackenheath ispot® Blade desk lamps will be featured in the popular Sky TV Series Lucky Man season 2. The ispot® Blade was chosen for its aesthetics and fit with the office environment.

Index

Code	Page	Code	Page	Code	Page	Code	Page	Code	Page
A		D		I1030B	30	I7020W	18	P	
A2010CH	15	D06A	14	I1030W	30	I7030B	19	PS20	48
A2010SC	15	D08A	14	I1031B	30	I7030W	19	PS21	48
A2010WH	15	D1000A	14	I1031W	30	I8010B	56	PS41	47
A2011CH	15	D1000B	12	I1038W	31	I8010W	56	PS41R	47
A2011SC	15	D14A	14	I1038W	31	I8011B	56	R	
A2011WH	15	D2401	12	I1039B	31	I8011W	56	R6050	24
A2012CH	15	D2402	12	I1039W	31	I8020B	56	R6060	24
A2012SC	15	D2403	12	I1040W	30	I8020W	56	R6070	24
A2012WH	15	D2404	12	I1041B	30	I8021B	56	R6080	25
B		D250A	14	I1048B	31	I8021W	56	R6090	25
B1000	76	D250B	12	I1048W	31	I9010B	53	R6100	25
BPW3AB	50	D28A	14	I1049B	31	I9010W	53	R7010	26
BPW3AW	50	D35A	14	I1049W	31	I9011B	53	R7020	26
BPW4B	49	D500A	14	I2000B	43	I9011W	53	R7030	26
BPW4W	49	D500B	12	I2010B	36	I9018B	52	R7040	26
BTHB2	45	E		I2010W	36	I9018W	52	R7050	27
BTHB3	45	E9101	72	I2020B	36	I9019B	52	R7060	27
BTHB5	45	E9201	73	I2020W	36	I9019W	52	R7070	27
C		E9301	71	I2030B	36	I9020B	53	R7080	27
C21A	13	E9400	75	I2030W	36	I9020W	53	R7090	27
C22A	13	E9500	74	I3010B	32	I9021B	53	T	
C23A	13	G		I3010W	32	I9021W	53	T8010	21
C24A	13	GF621	61	I3015B	33	I9028B	52	T8011	77
C25A	13	GF622	60	I3015W	33	I9028W	52	T8020	22
C26A	13	GF623	61	I3020B	32	I9029B	52	T8021	78
C27A	13	GF624	62	I3020W	32	I9029W	52		
C28A	13	GF625	59	I3025B	33	I9101WE	54/69		
C29A	13	H		I3025W	33	I9201WE	70		
C31A	13	H6010B	64	I4000B	46	ISE10B	34		
C32A	13	H6010W	64	I5000B	44	ISE11B	35		
C33A	13	H7010B	65	I5020B	57	ISE20B	34		
C34A	13	H7010W	65	I5020W	57	ISE21B	35		
C35A	13	I		I5021B	57	ISE30B	34		
C36A	13	I1000B	43	I5021W	57	ISE31B	35		
CRL8010	21	I1010B	30	I6010B	55	ISE40B	34		
CRL8011	21	I1010W	30	I6010W	55	ISE41B	35		
CRL8011	77	I1011W	30	I6011B	55	K			
CRL8020	22	I1020B	30	I6011W	55	K7010B	37		
CRL8021	22	I1020W	30	I6020B	55	K7011B	38		
CRL8021	78	I1021B	30	I6020W	55	K7020B	37		
CRL8111	77	I1021W	30	I6021B	55	N6030	40		
CRL8121	78	I1028B	31	I6021W	55	N9010	41		
		I1028W	31	I7010B	17	N9020	41		
		I1029B	31	I7010W	17	N9030	41		
		I1029W	31	I7020B	18	N9040	41		

Speak to our friendly **sales team** if you have any questions regarding our products or pricing. Look out for the new Briticent catalogue, available **SOON!**



Brackenheath 

Kingsway House, 2-8 Laporte Way, Luton, Bedfordshire, England, LU4 8RJ

Telephone: +44 (0) 1582 544 590 | Fax: +44 (0) 1582 544 591 | email: sales@brackenheath.co.uk | www.brackenheath.co.uk