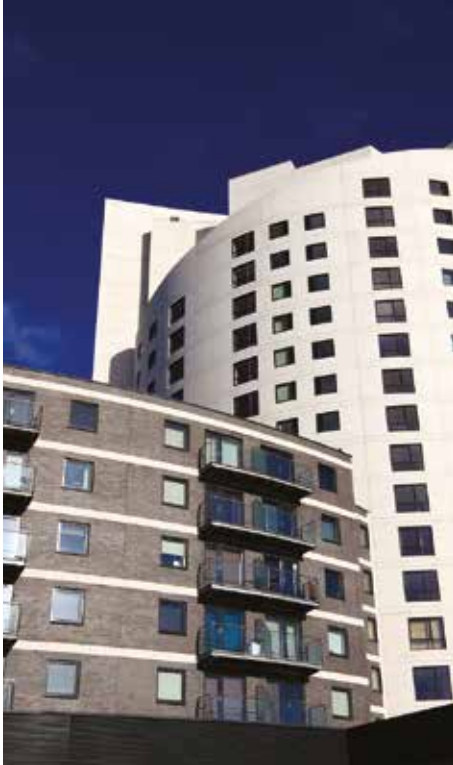


Air Flow Solutions



Hand Dryers

Quiet, hygienic and hands free



RESIDENTIAL FANS



HEAT RECOVERY



INDUSTRIAL FANS



ACCESSORIES



Hand Dryers

Why ecoDRY?

Airflow Developments Limited have recently re-entered the Hygiene Products market segment with a range of “eco – friendly” hand dryers. The ecoDRY series are very efficient, only using a mere 2.3w per drying cycle. They are exceptionally hygienic with various protection technologies incorporated into the manufacturing process to ensure the product achieves the highest level of protection possible.

Boasting a contemporary design the ecoDRY product will blend into any washroom whilst delivering the performance you would expect of any product from the Airflow stable of products.

ecoDRY mini

ecoDRY mini hand dryers are available in white or Satin Chrome ABS plastic finishes. Being one of the smallest hand dryers on the market, they are ideal for smaller washrooms and where space is limited. They offer customers an ideal entry level product that excels in the performance/ energy consumption/ cost parameters.

ecoDRY

ecoDRY 550 hand dryers are available in white ABS plastic and Satin Die Cast Aluminium finishes making them ideal for any washroom. The exceptionally low energy consumption will keep electricity costs at a minimum and help reduce carbon emissions when comparisons are made to other forms of drying your hands.

The new ecoDRY 1100 has a heating element for those who prefer the conventional warm air drying system.

KEEP UP TO DATE



For the latest ventilation news, information, product data and application advice

CLICK CALL VISIT

airflow.com



ecoDRY mini

For use in washrooms



Key Features

- **ABS Plastic – White or Satin Chrome**
- **Automatic Sensor Operated**
- **Air speed 200 Km/h**
- **Air flow 110 m³/hr/ 31 l/min**
- **28,000 rpm**
- **400 watt motor/ 500 watt heating element**
- **20 second drying time**
- **Low noise level 70dB(A) at 2m**
- **Flow airflow outlet – stream of air**
- **Smallest hand dryer in class – less than 10cm in depth**
- **Optimum performance/ energy consumption/ cost ratio**
- **Optional HEPA filter**
- **CE, IP23 rating and double insulated**
- **Electricity Supply 220/240V – 50/60Hz**
- **3 Year Warranty**

Hand Dryer

Airflow are pleased to introduce one of the world’s smallest hand dryers – the ecoDRY mini. The ecoDRY mini is ideal for washrooms where space is limited as it only protrudes less than 10cm from the wall when fitted. Taking a mere 20 seconds to dry one’s hands, it consumes minimal energy and boasts an excellent performance/ energy consumption/ cost ratio making it the ideal choice for customers looking for an entry level hand dryer.

An optional HEPA filter protecting users from 99.997% of air bacteria is available – ensuring clean air on your hands at all times.

ecoDRY mini is another inspiring design Airflow is proud to have in their ecoDRY portfolio of hand dryers.



Models

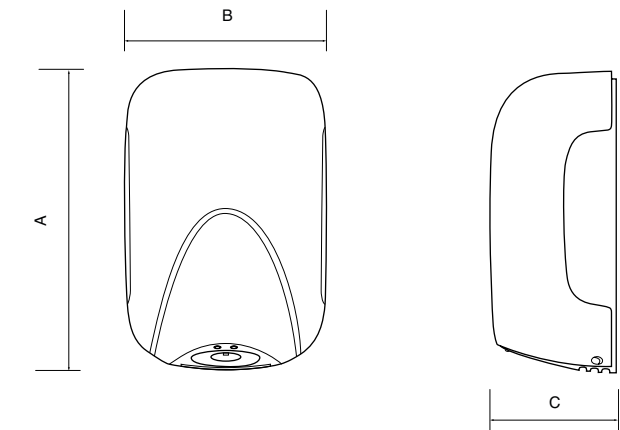
White	ABS plastic
Chrome	ABS plastic



Technical Data

Specification	ecoDRY mini White	ecoDRY mini Satin
Function	Automatic Sensor	Automatic Sensor
Material	ABS	ABS
Colour	White	Satin Chrome
Absorbtion Heating Element	500w	500w
Absorbtion Motor	400w	400w
Total Power	900w	900w
Air Speed	200km/h	200km/h
Fan speed	28000 r.p.m.	28000 r.p.m.
Air Flow Performance	110m³/hr / 31l/sec	110m³/hr / 31l/sec
Drying Time	20 sec	20 sec
Noise Level (at 2m)	70dB(A)	70dB(A)
Protection Rating	IP23	IP23
Electrical Insulation	Class II	Class II
Certification	CE	CE
Weight (Kg)	1.2	1.2
Dimensions (H x W x D)mm	238 x 156 x 99.5	238 x 156 x 99.5
Product Codes	90000520	90000521

Dimensions



Model	A	B	C
ecoDRY mini	238	156	99.5

Flow Mechanism



Consumables / Spare Parts

The HEPA filter and replacement carbon brushes are available on request from your ecoDRY mini stockist or visit: airflow.com



550w - 1100w Hand Dryers

Airflow are proud to present an Eco-Hygienic Drying System – the ecoDRY has double antibacterial protection as the internal plastic parts are treated with Agion® Silver Antimicrobial reducing bacteria by up to 99.9% on the dryer’s surfaces. The ecoDRY is also fitted with an advanced HEPA filter protecting users from 99.997% of air bacteria – ensuring clean air on your hands at all times. ecoDRY offers superior performance in drying time at a very quick 10 – 14 seconds.



Key Features

- White ABS plastic / satin die cast aluminium
- Air flow 126 m³/hr/ 3500 l/min
- Automatic sensor operated
- LED "Blu" down-lighter when in use
- Air speed from 250 Km/h
- ecoDRY 550 Cool air, only 2.3w per drying cycle
- ecoDRY 1100 Warm air
- Very quick 10 -14 second drying time
- Low noise level from 68 dB(A) at 2m
- Flow air flow outlet - blade / air curtain
- Compact - smallest high speed hand dryer in it's category
- Revolutionary double level anti-bacteria protection system
- Agion® Silver Antimicrobial treated and HEPA filter
- IP23 rating
- 3 year warranty

ecoDRY 550 cool air unit only consumes 2.3w per drying cycle hence qualifying for Airflow’s ecoair accreditation. ecoDRY 1100 models have heating elements for those who prefer a conventional warm air drying sytem. The product boasts a contemporary design with ergonomic features making it stand out from the competition – a drying system to aspire to for your wash room.



Models

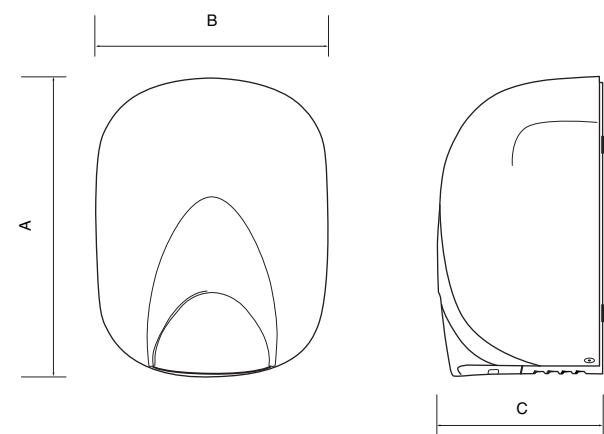
White	ABS plastic
Satin	Die cast aluminium



Technical Data

Specification	ecoDRY 550 ABS	ecoDRY 550 Satin	ecoDRY 1100 ABS	ecoDRY 1100 Satin
Function	Automatic Sensor	Automatic Sensor	Automatic Sensor	Automatic Sensor
Material	ABS	Die Cast Aluminium	ABS	Die Cast Aluminium
Colour	White	Satin Metal	White	Satin Metal
Absorbtion Heating Element	N/A	N/A	550w	550w
Absorbtion Motor	550w/ 2.3w per drying cycle	550w/ 2.3w per drying cycle	550w	550w
Total Power	550w	550w	1100w	1100w
Air Speed	250km/h	250km/h	325km/h	325km/h
Fan speed	26000 r.p.m.	26000 r.p.m.	30000 r.p.m.	30000 r.p.m.
Air Flow Performance	126m³/hr / 35l/sec	126m³/hr / 35l/sec	187m³/hr / 52l/sec	187m³/hr / 52l/sec
Drying Time	10 - 15 sec	10 - 15 sec	10 - 15 sec	10 - 15 sec
Noise Level (at 2m)	68dB(A)	68dB(A)	75dB(A)	75dB(A)
Protection Rating	IP23	IP23	IP23	IP23
Electrical Insulation	Class II	Class II	Class II	Class II
Certification	CE	CE	CE	CE
Weight (Kg)	3,0	5,0	3,0	5,0
Dimensions (H x W x D)mm	285 x 221 x 157	285 x 221 x 157	285 x 221 x 157	285 x 221 x 157
Product Codes	90000242	90000243	90000518	90000519

Dimensions



Model	A	B	C
ecoDRY	285	221	157

Flow Mechanism



Consumables / Spare Parts

The HEPA filter and replacement carbon brushes are available on request from your ecoDRY stockist or visit: airflow.com

Air Flow Solutions



Always Innovating

Our constant search for new and better ways to save energy, improve the indoor environment and provide you with high quality, reliable and easy to use products that contribute to a low carbon future continues.

visit: airflow.com

for the latest, products, data sheets, application advice and information

Customer Services : 01494 560800

Technical Support : 01494 560950

CI/SfB
(57)



Call: 01494 560800

Visit: airflow.com



Airflow Developments Limited
Aidelle House, Lancaster Road,
Cressex Business Park,
High Wycombe, Buckinghamshire,
United Kingdom, HP12 3QP

E-mail: info@airflow.com
Telephone: +44 (0) 1494 525252

airflow.com

© Airflow Developments Limited. Airflow Developments Limited reserve the right, in the interests of continuous development, to alter specifications without prior notice. All orders are accepted subject to our conditions of sale which are available on request



80000191 - Issue2 07/15