



...Share our experience for showering...

We know there's nothing better than a refreshing shower. So why not revitalise your mind, body and soul with one of our exhilarating showers? Our stylish range has been designed to compliment your lifestyle.

Efficiency
Simplicity
Intelligent
Reliability

WHY USE ECO-T?

Content

Water and energy saving 5

The Xpressions ECO - T range, provides an ideal showering experience for the whole family, offering safety and sustainability in one.

Minimise power consumption and reduce running costs 6

The ECO - T is an intelligent showering solution for the installer and homeowner. The push button ECO function will allow complete control in reducing the total power used to 65% of the full kW rating of the shower.

The six minute shower 8

The Xpressions ECO - T also offers a patented* integral Timer function providing the end user total control over shower duration and water consumption.

Thermostatic safety for the whole family 10

The Xpressions ECO - T offers complete peace of mind with its patented* thermostatic temperature control ensuring a safe and exhilarating shower for the whole family at the touch of a button.

Find your perfect solution 12

Pick the perfect shower for you by choosing from one of our 6 model variants.

Preparing for installation 14

With over 45 years experience Redring offer a number of customer solutions to make your shower selection an easy choice.

Water and energy saving

Key Features

Thermostatic Control

Easy and safe showering while maintaining showering temperature to between +/- 1.5°C

The in built temperature limiter is factory set 46°C but is adjustable to 43°C for complete safety

ECO

The ECO power button to ensure complete energy efficiency and reduced running costs

Patented Timer Function*

To promote sustainable usage and water efficiency

Scale Flush Feature

To help prevent limescale and ensure a safe starting temperature for the next user

Three kW Options

To suit all applications

6 Spray Patterns

Wake up right with a choice of six spray patterns

Push stop and start

button with 'Set and forget' feature for ease of control

BEAB Approved

2 Year UK Guarantee**

Quality

With over 45 years experience choose Redring for quality

*Patent pending at time of print

** Conditions may apply

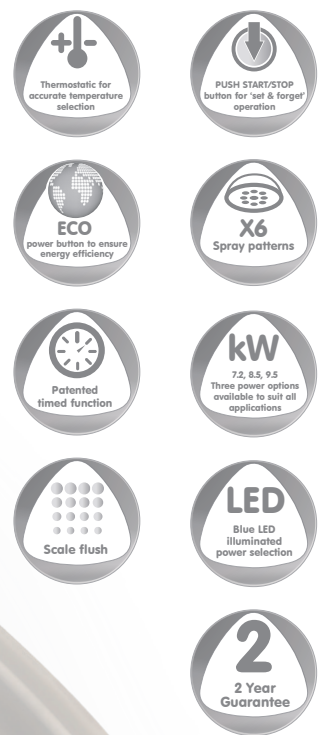
The Range

The Xpressions ECO - T range, as part of Redring's Intelligent showering offer, is the ideal showering experience for the whole family. The state of the art electronically controlled thermostatic shower comes complete with new patented* control technology, to ensure ease of use and environmental sustainability. The unique shower selection features include High, ECO and Timer settings for complete control. With an increased focus towards 'social responsibility' and water efficiency Redring have manufactured one of the most sustainable, intelligent showering solutions on the market.

With easy to use push button start and rotary temperature selection, LED indicator for user feedback and

patented* thermostatic control feature. The Xpressions ECO - T is the most advanced family shower available; the thermostatic control allows the flow of constantly regulated water temperature to be maintained to within +/- 1.5°C ensuring a safer showering experience for all.

For unique applications Redring will also be promoting three further contemporary product finishes in 8.5kW ratings. Gloss Piano Black, Matt Silver and Atlas Chrome. These limited edition models will help create ambience in any bathroom application.



therm
static

Minimise power consumption and reduce running costs

ECO Setting

With an ever increasing drive towards 'green' living, as well as a change to Building Regulations 2010, efficient showering solutions has climbed the agenda in both the new build and replacement market.

Within the UK building regulations, (2010) Approved Document G (building regulations for 'Sanitation, hot water safety and water efficiency') discusses a 'maximum allowable amount of 125 litres of wholesome water per person per day in domestic dwellings'. The ECO - T is an intelligent showering solution for the installer and homeowner.

The push button ECO function will allow complete control in reducing the total power used to 65% of the full kW rating of the shower. This unique feature of the Xpressions ECO - T can be used all year round but can be especially useful in summer months when the incoming ambient water temperature is higher than that of winter or when the flow rate is limited by low mains pressure. The overall reduction in power consumption can reduce running costs by up to 35% offering reductions in power and water consumption.

Some saving examples:

Using a 7.2kW shower in the ECO setting for one year can save £107.31*

An 8.5kW shower in a standard family home running in ECO setting can save £126.69*

Replacing an existing 9.5kW shower with an Xpressions ECO - T operating on the ECO power function, can save up to £141.59*

* These savings are based on four ten minute showers per day and calculated on the parameters below, these will change based on individual usage.

Shower	High Pwr (w)	Incoming temperature (°C)			Outlet settings (°C)	Eco power	65	% of High power
		Winter	Average	Summer				
7.2kW	7200	4	10	16	41			
8.5kW	8500							
9.5kW	9500							

Shower	Power setting	Water used per shower (litres)			Energy used (kWhr) per shower	Energy used (kWhr) per annum	Electricity cost per shower (£)
		Winter temperatures	Average temperatures	Summer temperatures			
7.2kW	HIGH	27.8	33.2	41.1	1.20	1752	£0.210
	ECO	18.1	21.6	26.7	0.78	1139	£0.137
8.5 kW	HIGH	32.8	39.2	48.6	1.42	2068	£0.248
	ECO	21.3	25.5	31.6	0.92	1344	£0.161
9.5kW	HIGH	36.7	43.8	54.3	1.58	2312	£0.277
	ECO	23.8	28.5	35.3	1.03	1503	£0.180

The above is calculated on one kWhr costing 17.5 pence, this figure may be variable dependent on electrical supplier





The six minute shower

Timed Function

In addition to the Eco setting the Xpressions ECO - T also offers a patented* integral Timer function providing the end user total control over shower duration and water consumption.

Pushing the timed button at the start of the showering experience or at any point during the shower, will allow the Xpressions ECO - T to automatically run for a period of 6 minutes. Once selected a blue LED will illuminate giving direct feedback on function and selected power. The showering experience will run electronically for 5.5 minutes before the LED will begin to flash, notifying that the shower is coming to an end.

Perfect for monitoring water consumption the Xpressions ECO - T patented Timed function offers complete control as well as effective sustainable showering for the whole family. With water wastage becoming the key message to consumers the ECO - T can offer sustainable showering at a touch of a button.

*Patent pending at time of print



Thermostatic Safety for the whole family

Xpressions ECO - T

The Xpressions ECO - T offers complete peace of mind with its patented* thermostatic temperature control and built in maximum temperature limiter.

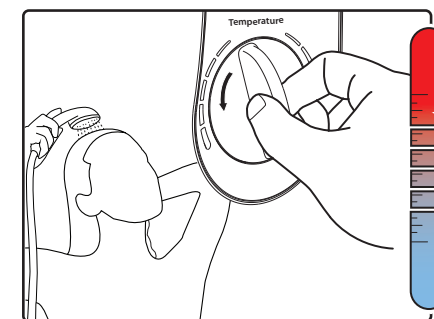
Thermostatic technology means that the shower automatically adjusts to any sudden changes in temperature caused by turning on a tap or operating the washing machine in other areas of a property.

The Xpressions ECO - T will maintain the selected temperature to within +/- 1.5°C to ensure a safe and comfortable shower every time.

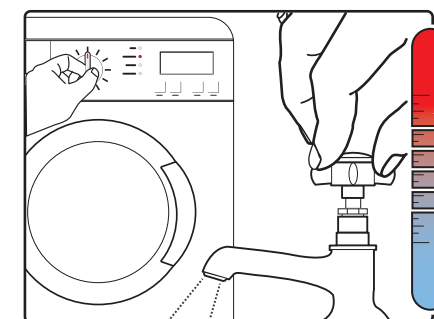


“Constant
temperature,
just perfect”

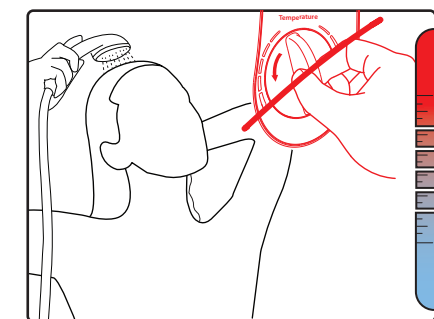
“If the temperature changed
it was not noticeable”



User switches on the shower and adjusts the temperature dial to give the desired temperature.



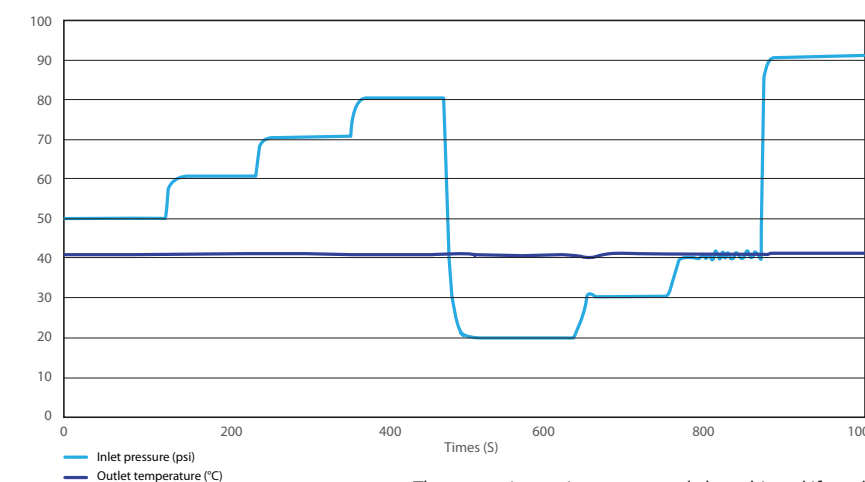
If water supply pressure changes e.g. a tap or washing machine is turned on elsewhere in the house, temperature in the shower can be affected.



In the Xpression ECO - T the user is not required to adjust the temperature control manually when the pressure changes. Shower control maintains the outlet temperature set at the start.

Thermostatic Consistency

The patented* thermostatic control of the ECO - T offers nearly constant temperature consistency. The graph shows the shower temperature of the ECO - T as the water pressure is changed during the showering experience. This new technology allows for the water temperature to remain nearly consistent regardless of the changes in water pressure, ensuring an enjoyable shower in any busy family home.



Thermostatic consistency can only be achieved if used as per the Redring instruction and installation manual





Find your perfect solution

Typical spray patterns across the ECO - T range.
'This shower comes complete with 6 spray setting to allow the user to change their showering experience at a touch.'

The shower is designed and approved to EN-60335 with the handset provided.



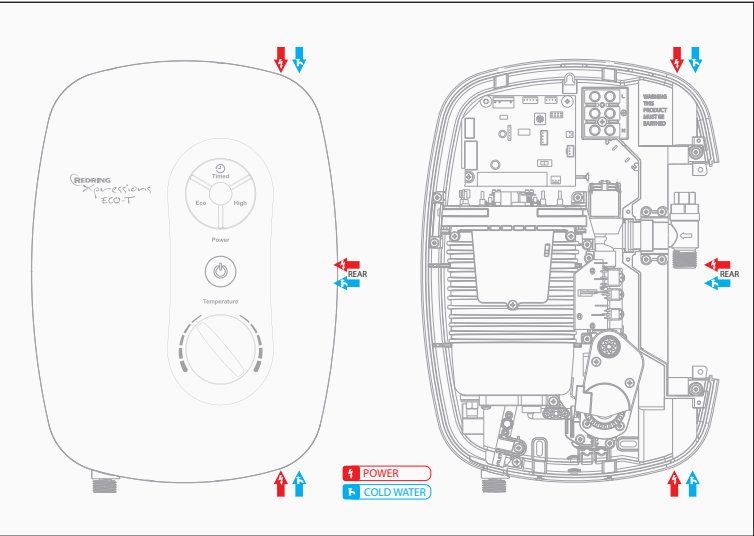
Thermostatic temperature control to +/- 1.5°C Temperature limiter (factory set to 46°C with option to reduce to 43°C upon installation)
Scale flush feature to prevent hot water burst when shower is restarted with flashing LED indicator and rotary flow temperature control.

The range

therm
static

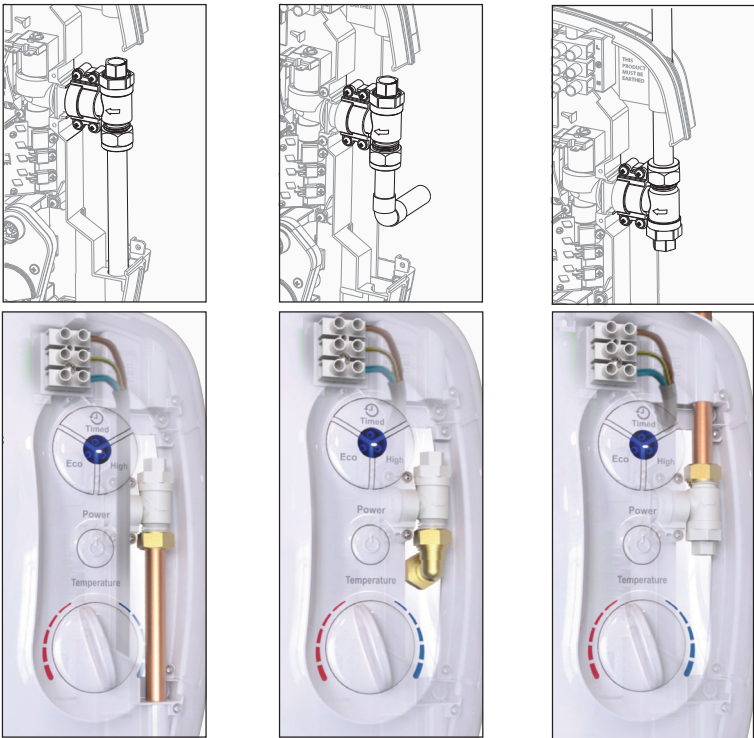


Preparing for installation



Connect the mains water supply to the Inlet of the shower via 15mm copper, stainless steel or plastic pipe using a 15mm compression fitting. (supplied)

Pipe entry can be made via top, bottom or rear, as illustrated below:-



BOTTOM ENTRY

REAR ENTRY

TOP ENTRY

Models

Product Selector	EXT7	EXT8	EXT9
Reference number	53677701	53678701	53679701
kW rating	7.2	8.5	9.5
Finish	White high gloss	White high gloss	White high gloss
Guarantee UK (Years)*	2	2	2
Product Selector	EXT8B	EXT8S	EXT8C
Reference number	53678702	53678703	53678704
kW rating	8.5	8.5	8.5
Finish	Gloss Piano Black finish	Matt Silver finish	Atlas Chrome finish
Guarantee UK (Years)*	2	2	2

* Conditions may apply

Cable and pipe entry points

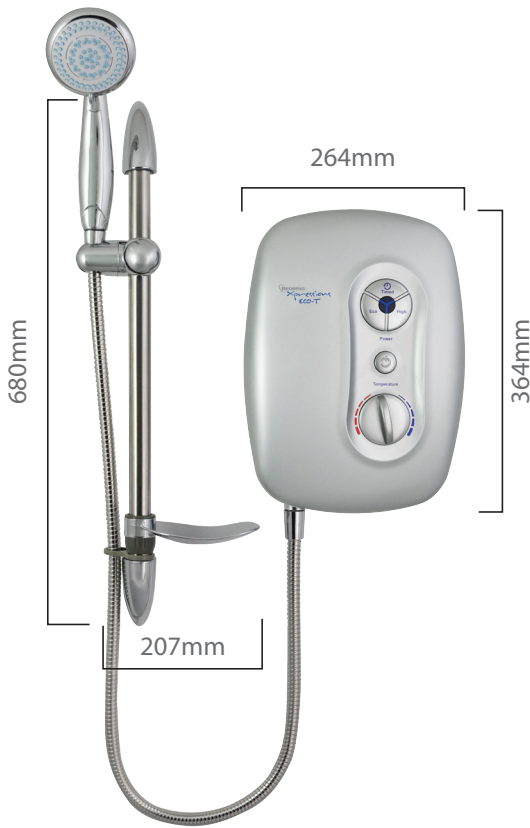
The Xpressions ECO - T is a right hand entry product. The diagram illustrates where the electrical and water cable pipe entry can be made.

Installation and Maintenance

The Xpressions ECO - T provides ease of installation with top, bottom and rear service entry points for water and power on right hand side.

The product will operate at input water pressure from 0.7-10bar (10psi-145psi)

Product Dimensions



Water supply and pressure

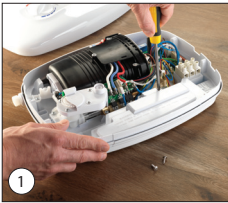
Ensure you have the correct water supply 15mm copper, stainless steel or plastic pipe with a water pressure of 0.7 bar - 10 bar (10psi-145psi). (This shower will not operate below 0.7 bar)

Electrical Connections

Ensure you have the correct cable connections
7.2kW - 6mm² cable
8.5kW - 10mm² cable
9.5kW - 10mm² cable
(This is guidance only)

This product must be connected via a double pole isolation switch (not supplied) to meet current wiring regulations.

Installation procedure



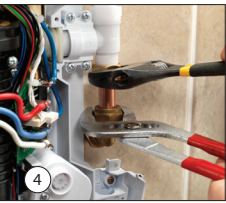
To get started, remove the four cover screws and lift the cover off to gain access to the inlet cover. Take out the four inlet screws, remove the inlet cover and then unscrew the two side access trimplate screws.



Hold the shower vertically against the wall and mark the top hole first. Drill the wall at the marked point ready for the rawl plug, which is provided with the ECO - T.



Put the top screw in first, leaving it proud by approximately 5mm. This is where the shower will be hung. Position the shower vertically on this top screw and then mark and drill the two other holes at the bottom of the shower. Fix the shower to the wall. Then mark the desired position of the accessories and screw these to the wall.



Connect the mains water supply to the inlet of the shower with a 15mm copper, stainless steel or plastic pipe, using a 15mm compression fitting. Make sure the backplate is square on the wall and tighten the retaining screws, which hold it to the wall. Use a suitable sealant to seal around the incoming pipework through the wall to prevent water entering the wall.



The cable size required is determined by the kW rating of the shower and the distance between the shower and the consumer unit. Use the table included in the ECO - T handbook to identify which size is right for your installation. Once this has been decided, connect the cable to the terminal block. Ensure that all the retaining screws are very tight, and that no cable insulation is trapped under the screws. Replace the inlet cover and side access trimplate section.



The ECO - T is factory set with the outlet temperature limit of 46 deg °C, but this can be set to 43 deg °C by changing the temperature slider switch. Once this is done, replace the front cover. Reattach the cover using the screws removed at the beginning of the installation.



Commission the shower unit by firstly ensuring the water and electricity are switched on. Press and hold the Eco button for more than three seconds until the water flows, then release. The unit will continue to flow with no heat. The digital display will illuminate the Eco light. Next, press the start/stop button, check that the temperature increases, and make sure there are no leaks. This completes the commissioning, and the installation.



REDRING
Xpressions
ECO-T