

GRIDPRO Interchangeable Plates

Product Range

GRIDPRO Interchangeable Plates

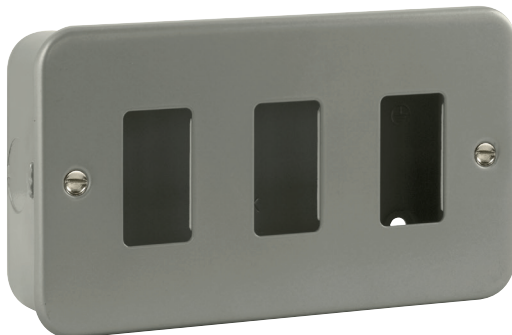
| | |
|-----------------|---|
| CL20401 | 1 Gang Metal Clad Grid Plate |
| CL20401B | 1 Gang Metal Clad Grid Plate (No Knockouts In Back Box) |
| CL20402 | 2 Gang Metal Clad Grid Plate |
| CL20402B | 2 Gang Metal Clad Grid Plate (No Knockouts In Back Box) |
| CL20403 | 3 Gang Metal Clad Grid Plate |
| CL20403B | 3 Gang Metal Clad Grid Plate (No Knockouts In Back Box) |
| CL20404 | 4 Gang Metal Clad Grid Plate |
| CL20404B | 4 Gang Metal Clad Grid Plate (No Knockouts In Back Box) |



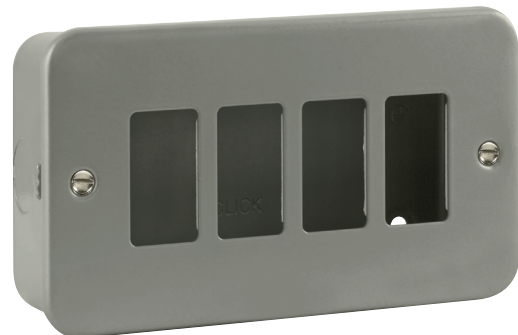
CL20401, CL20401B



CL20402, CL20402B



CL20403, CL20403B



CL20404, CL20404B



Errors & Omissions excluded. Specification is subject to change without notice. Provided with 40mm deep back boxes. Utilizes standard 1 gang and 2 gang BS4662 back boxes.

V1.0

Scolmore International Ltd, 1 Scolmore Park, Landsberg, Lichfield Road Ind. Estate, Tamworth, Staffordshire, B79 7XB

Telephone: 01827 63454

E-mail: sales@scolmore.com, technical@scolmore.com

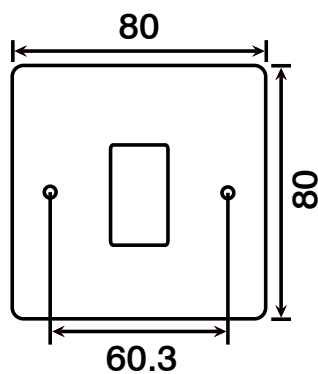
Facsimile: 01827 63362

Website: www.scolmore.com

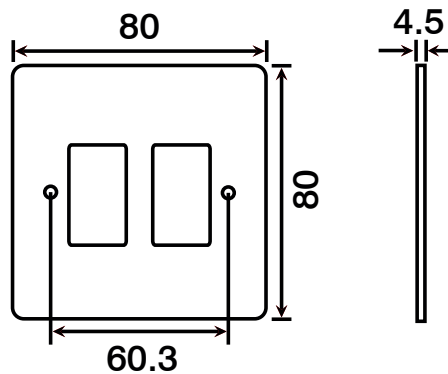
GRIDPRO Interchangeable Plates

Product Dimensional Drawings (mm)

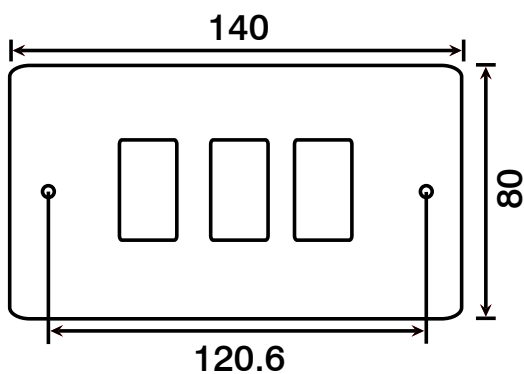
CL20401



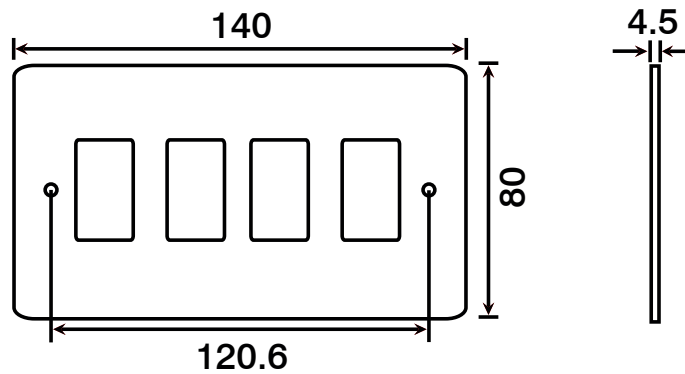
CL20402



CL20403



CL20404



GRIDPRO Interchangeable Plates

Technical Specification

GRIDPRO Interchangeable Plates

| | |
|--------------------------------|--|
| Material Composition | Front Plate & Back Box: Electrophoretically Coated Steel |
| | GR20400 & GR20600 Mounting Yoke: Galvanised Steel |
| | Earth Terminal: Brass, Earth Strap: Mild Steel |
| | Back Boxes: Electrophoretically Coated Steel |
| Cable Size | Dependent on modules fitted |
| Back Box Depth | 40mm Provided / 56mm Provided (CL20518 & CL20524) |
| Knockout Sizes | 5 x 20mm (1 Gang), 7 x 20mm (2 Gang) |
| | 4 x 20mm, 4 x 25mm (CL20506 & CL20508) |
| | 5 x 20mm, 5 x 25mm (CL20509 & CL20512) |
| | 3 x 20mm, 9 x 25mm (CL20518) |
| | 6 x 20mm, 6 x 25mm (CL20524) |
| | |
| Modular | Yes |
| Warranty | 10 Years |
| IP Rating | IP20 |
| Operational Temperature | -5° to +40°C |
| Standards | BS 5733 : 2010 + A1 : 2014, BS 4662: 2006 + A1: 2009 |

Additional Information

Ensure that the mains supply is isolated before commencing installation and refer to the circuit diagram with the relevant product.

Bare earth cables must always be covered with appropriate sleeving and wired to the earth terminal.

CL20506 & CL20508 requires (2x) GR20400 3-4 Module Mounting Yokes. These plates are designed to be used with specified back box WA512 when flush mounting is required. 40mm back box supplied.

CL20509 & CL20512 requires (3x) GR20400 3-4 Module Mounting Yokes. These plates are designed to be used with specified back box WA518 when flush mounting is required. 40mm back box supplied.

CL20518 requires (3x) GR20600 6 Module Mounting Yokes. These plates are designed to be used with specified back box WA20518 when flush mounting is required. 56mm back box supplied.

CL20524 requires (4x) GR20600 6 Module Mounting Yokes. These plates are designed to be used with specified back box WA20524 when flush mounting is required. 56mm back box supplied.

Interchangeable with modules in the GRIDPRO system. 

Errors & Omissions excluded. Specification is subject to change without notice.

V1.0

Scolmore International Ltd, 1 Scolmore Park, Landsberg, Lichfield Road Ind. Estate, Tamworth, Staffordshire, B79 7XB

Telephone: 01827 63454

E-mail: sales@scolmore.com, technical@scolmore.com

Facsimile: 01827 63362

Website: www.scolmore.com



Scolmore International Ltd
1 Scolmore Park: Landsberg
Lichfield Road Industrial Estate
Tamworth, Staffordshire B79 7XB

t: 01827 63454
f: 01827 63362
e: sales@scolmore.com
w: www.scolmore.com

EU DECLARATION OF CONFORMITY

1. *Issuer Name* Scolmore International Limited
2. *Issuer Address* 1 Scolmore Park, Landsberg,
Lichfield Road Industrial Estate,
Tamworth, Staffordshire, B79 7XB
3. *Object(s) of Declaration* Essentials Range
 - a. *Group* GRIDPRO Interchangeable Plates
 - b. *Models No.* CL20401, CL20401B, CL20402, CL20402B, CL20403, CL20403B,
CL20404 CL20404B, CL20506 CL20506B, CL20508, CL20508B,
CL20509, CL20509B, CL20512, CL20512B, CL20518, CL20518B,
CL20524, CL20524B
4. *The object of the declaration described above is in conformity with the requirements of the following Legislations:*
5. *All products contained within the aforementioned comply with the relevant standards and requirements listed below.*

BS 5733 : 2010 + A1 : 2014
6. *I hereby declare that the equipment named above has been designed to comply with the relevant sections of the above referenced specifications. The unit complies with all applicable Essential Requirements of the Directives.*

In conjunction with the above all manufacture and process controls are in accordance with ISO 9001:2008.

This declaration has been issued under the sole responsibility of the manufacturer, signed at, for and on behalf of: Scolmore International Limited

R Turner

Ross Turner - Technical Support Engineer