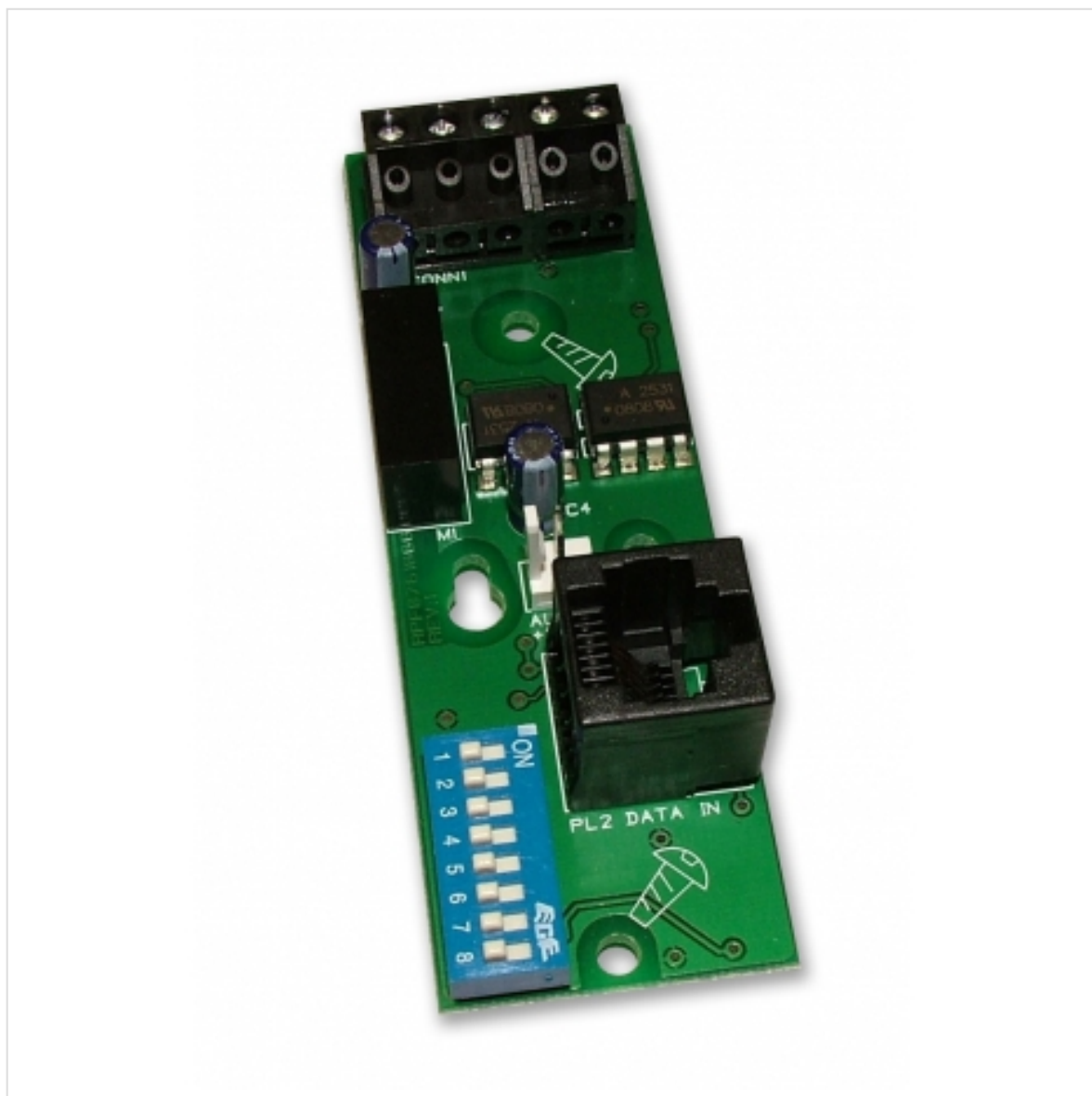




[◀ Back to Search results for "CFP761" \(13 other results\)](#)



## CFP/XFP Network Driver Card

### Part No. **CFP761**

An optional system expansion device for use with CFP Standard/AlarmSense conventional fire panels or XFP Single Loop 16 Zone addressable fire panels.

- When used with CFP Standard/AlarmSense panels the CFP761 allows the connection of up to eight CFP760 Repeaters (one CFP761 required per Main, all CFP760 repeaters include a CFP761 as standard).
- When used with XFP Single Loop 16 Zone panels the CFP761 allows the connection of up to eight XFP Repeaters or eight XFP Main panels (any mix). (One CFP761 required per networked Main XFP Single Loop 16 Zone fire panel (note that XFP510-16 and XFP510-32 repeaters include a network driver card as standard).
- The CFP761 is NOT compatible with XFP 1/2 Loop 32 Zone fire panels which require a CFP761 card for networking.



## More Information



### Key network protocol features when used for connecting CFP repeaters:

Communication achieved using CFP761 network driver cards (one CFP761 is supplied with each CFP760 Repeater, an additional CF761 card is required at the main CFP).

Up to 8 repeaters per main CFP.

Communicates over screened two-wire fire resistant cable.

Total repeater network cable length should not exceed 1KM.

### Key network protocol features when used for interconnecting XFP main panels:

Can be used to connect up to 8 XFP main panels (any mix) over a two-wire RS485 network of up to 1KM in length.

Each networked XFP can be programmed to accept Fires, Faults and Control actions such as Silence Alarm Sounders and Control Panel Resets from other panels.

Each XFP will accept Disablement commands for zones, sounders and output sets from other panels.

All panels monitored for network wiring faults.

Fires and faults on remote panels are displayed on local panels including the point description.

C&Es can be programmed into local panels dependent on which remote panel is in alarm.

The network supports the programming of site data into remote panels from a PC at a local panel.

Time and date is common to all panels.

All networked main panels require a network communication card.

It is not possible to mix XFP main panels and XFP repeaters on the same network.

### Key network protocol features when used for connecting XFP repeaters

Can be used to connect up to 8 XFP repeaters (any mix) to one XFP main panel.

Up to 500m of cable may be fitted to an XFP two-wire repeater network.

Each XFP repeater offers all the functions and controls of an XFP main panel.

The XFP main panel must have a network communication card fitted.

It is not possible to mix XFP main panels and XFP repeaters on the same network.

## Technical Specifications



Power requirements	Aux 24V from host fire panel.
Quiescent current	2.8mA @ 30V DC.
Product dimensions (mm)	30 W x 90 H x D 20mm
Weight	24g.

## Dimensions & Mounting Information




Product dimensions:	TBC W x TBC H x TBC D mm.
Location:	Mounts inside a CFP Standard, CFP AlarmSense or XFP 1 Loop 16 Zone Panel.


Documentation

### CFP Repeater Instructions


DFU7003001 Rev 2

 Download (605.85k)


16 other products in the same category:




**CFP Standard 2 Zone**  
Conventional Fire Alarm Panel




**CFP Standard 4 Zone**  
Conventional Fire Alarm Panel




**CFP Standard 8 Zone**  
Conventional Fire Alarm Panel



**CFP Economy 2 Zone**  
Conventional Fire Alarm Panel



**CFP Economy 4 Zone**  
Conventional Fire Alarm Panel



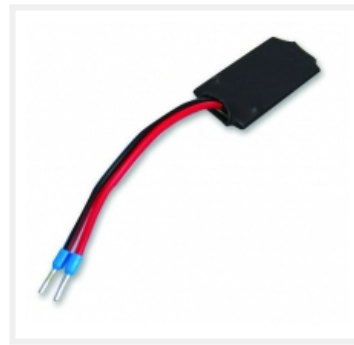
**CFP Economy 8 Zone**  
Conventional Fire Alarm Panel



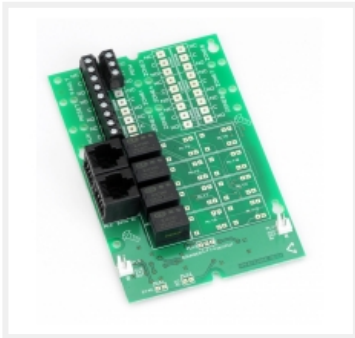
**CFP 8 Zone Repeater Panel**



**EN54-13 Interface Board**



**EN54-13 Fault Monitoring Module**



**CFP Relay Output Card (Reset, Fault, Aux. &...**



**CFP Relay Output Card (Reset, Fault, Aux. &...**



**CFP Relay Output Card (8 Output Per Zone Relays)**



**CFP Relay Output Card (4 Output Per Zone Relays)**



**CFP Relay Output Card (2 Output Per Zone Relays)**



**Barrier Interface Unit (for use with...**



**Red Plastic Fire Panel Key**

---

## CONTACT US



C-TEC , Challenge Way, Wigan, WN5 0LD, UK Opening times: 08:30 - 17:00 GMT.



**+44 (0) 1942 322744**



[sales@c-tec.co.uk](mailto:sales@c-tec.co.uk)

---